



SHILAP Revista de Lepidopterología

ISSN: 0300-5267

avives@eresmas.net

Sociedad Hispano-Luso-Americana de
Lepidopterología
España

Liu, S. R.; Wang, S. X.

Dos nuevas especies del género *Synesarga* Gozmány, 1978 de China (Lepidoptera: Lecithoceridae)

SHILAP Revista de Lepidopterología, vol. 42, núm. 165, enero-marzo, 2014, pp. 71-76

Sociedad Hispano-Luso-Americana de Lepidopterología

Madrid, España

Disponible en: <http://www.redalyc.org/articulo.oa?id=45531496010>

- Cómo citar el artículo
- Número completo
- Más información del artículo
- Página de la revista en redalyc.org

redalyc.org

Sistema de Información Científica

Red de Revistas Científicas de América Latina, el Caribe, España y Portugal

Proyecto académico sin fines de lucro, desarrollado bajo la iniciativa de acceso abierto

Two new species of the genus *Synesarga* Gozmány, 1978 from China (Lepidoptera: Lecithoceridae)

S. R. Liu & S. X. Wang

Abstract

Two new species of the genus *Synesarga* Gozmány, 1978 are described from China: *Synesarga brevidigitata* Liu & Wang, sp. n. from Yunnan and *S. breviclavata* Liu & Wang, sp. n. from Shaanxi. Photographs of adults and genitalia are provided, along with a key to the Chinese species.

KEY WORDS: Lepidoptera, Lecithoceridae, *Synesarga*, new species, China.

Dos nuevas especies del género *Synesarga* Gozmány, 1978 de China (Lepidoptera: Lecithoceridae)

Resumen

Se describen dos nuevas especies del género *Synesarga* Gozmány, 1978 de China: *Synesarga brevidigitata* Liu & Wang, sp. n. de Yunnan; *S. breviclavata* Liu & Wang, sp. n. de Shaanxi. Se incluyen fotografías de adultos y genitales así como una clave de las especies chinas.

PALABRAS CLAVE: Lepidoptera, Lecithoceridae, *Synesarga*, nuevas especies, China.

Introduction

Synesarga is a small genus of the subfamily Lecithocerinae, which was established by GOZMÁNY in 1978 based on the type species *S. pseudocathara* (Diakonoff, 1951); in the same paper (GOZMÁNY, 1978) described *S. caradjai* Gozmány, 1978 from Chinese Taiwan. WU & PARK (1999) transferred *Lecithocra paroena* Meyrick, 1906 to *Synesarga*; PARK (2000) treated *Anamimnesis* Gozmány, 1978 as a synonym of *Synesarga*, and transferred *A. bleszynskii* Gozmány, 1978, the only species of *Anamimnesis* to *Synesarga*; PARK (2007, 2009) described *S. kuni* Park, 2007 and *S. nigriptera* Park, 2007 from Vietnam, *S. phuruaensis* Park, 2009 from Thailand, and PARK & BAE (2012) described *S. mondulkiriensis* Park & Bae, 2012 from Cambodia, in which *Synesarga* was spelled as *Synersaga*. To date, *Synesarga* includes eight species in the world (PARK & BAE, 2012).

Synesarga is characterized by the forewing slightly broadened distally, the large and broad uncus convex on the caudal margin, and the large juxta with polymorphic postero-lateral lobes in the male genitalia, and the abdominal tergites densely spinous. These characters can well separate members of *Synesarga* from those of morphologically similar genus *Lecithocera*.

Three *Synesarga* species were recorded to occur in China previously: *S. pseudocathara*, *S. bleszynskii* and *S. caradjai*. In the present paper, we describe two new species based on the specimens collected from Yunnan and Shaanxi. The examined specimens are deposited in the Insect Collection, College of Life Sciences, Nankai University, Tianjin, P. R. China.

Taxonomy

Synesarga Gozmány, 1978

Synesarga Gozmány, 1978: 141.

Type-species: *Lecithocera pseudocathara* Diakonoff, 1951

Type locality: Myanmar.

Anamimnesis Gozmány, 1978: 143.

Key to the Chinese *Synesarga* species based on male genitalia

- 1 Valva with distal part evenly narrow2
 Valva with distal part roundly expanded3
- 2 Valva with ventral margin not protruded at distal 1/3; juxta with postero-lateral lobes about 1/4 length of juxta *S. brevidigitata* Liu & Wang, sp. n.
 Valva with ventral margin triangularly protruded at distal 1/3; juxta with postero-lateral lobes as long as juxta *S. pseudocathara*
- 3 Uncus bluntly convex on caudal margin; juxta with postero-lateral lobes shorter than juxta4
 Uncus narrowly convex on caudal margin; juxta with postero-lateral lobes as long as juxta
 *S. bleszynskii*
- 4 Valva gently shrunk at distal 1/4; aedeagus broad, same width with valva *S. caradjai*
 Valva sharply shrunk at distal 1/4; aedeagus slender, narrower than valva
 *S. breviclavata* Liu & Wang, sp. n.

Synesarga brevidigitata Liu & Wang, sp. n. (Figs. 1, 3)

Material examined: Holotype ♂, China: Mt. Weibao, Weishan (25° 23'N, 100°33'E), Yunnan, 2200 m, 20-VII-2001, leg. Hou-hun Li and Xin-pu Wang, genitalia slide No. LSR11150. Paratypes: 3 ♂♂, same data as for holotype.

Description: Adult (Fig. 1): Wingspan 20.0-23.0 mm. Head dark brown. Antenna dark brown, slightly thick basally, narrowing toward tip. Labial palpus dark brown on outer surface, greyish brown on inner surface, with scattered dark brown scales; second segment normally thickened; third segment slender, about same length as second, pointed terminally. Thorax and tegula dark brown. Forewing slightly widened distally; costal margin almost straight, apex bluntly rounded, termen slightly concave medially; ground color dark brown; cell with one rounded spot below middle of upper margin and one elliptoid spot at end; fold with one rounded spot at middle; cilia with basal half dark brown, distal half greyish brown, basal line yellowish brown. Hindwing and cilia greyish brown; basal line yellowish white. Legs yellowish white on dorsal surface, dark brown on ventral surface except tibiae and tarsi yellowish white.

Male genitalia (Fig. 3): Uncus spade-shaped, caudal margin roundly convex. Gnathos with basal 4/5 slightly broad, tapering to hooked apex. Costal bar short, a subtriangular plate. Valva with basal half broad, distal half evenly narrow, nearly parallel dorso-ventrally, rounded apically. Sacculus broad, about half length of valva, shallowly concave inward from ventral margin distally. Juxta shield-like, with short fingerlike postero-lateral lobes, about 1/4 length of juxta, with a sclerotized transverse ridge at posterior 1/4. Vinculum with anterior margin broadly rounded. Aedeagus shorter than valva, slightly broad basally, gradually narrowed distally, curved at middle, having teeth ventro-apically, distal half with a bunch of densely packed very small toothlike granules, which is transversally arranged in rectangle; cornutus absent.

Female unknown.

Diagnosis: This species is similar to *S. nigriptera* Park, 2007, but can be separated by the juxta with short fingerlike postero-lateral lobes, and the aedeagus as long as the valva in the male genitalia. In *S. nigriptera*, the postero-lateral lobes of the juxta are clavate, and the aedeagus is about 3/4 length of the valva.

Distribution: China (Yunnan).

Etymology: The name of this species is derived from the Latin *brevis*- (short) and *digitatus* (fingerlike), in reference to the postero-lateral lobes of the juxta.

***Synesarga breviclavata* Liu & Wang, sp. n.** (Figs. 2, 4)

Material examined: Holotype ♂, China: Xunyangba, Ningshan County (33° 34'N, 108°33'E), Shaanxi, 1300 m, 3-VII-2007, leg. Hai-li Yu, genitalia slide No. LSR11171. Paratype: 1 ♂, same data as for holotype except dated 26-VI-2007.

Description: Adult (Fig. 2): Wingspan 20.0-23.0 mm. Head dark brown. Antenna dark brown, slightly thick basally, narrowing toward tip. Labial palpus dark brown; second segment normally thickened; third segment slender, as long as second, pointed terminally. Thorax and tegula dark brown. Forewing with costal margin slightly arched distally, apex obtuse, termen obliquely truncate; ground color brown, with scattered dark brown scales; cell with one short claviform spot below middle of upper margin and one nearly rounded spot at end; fold with one irregularly rounded dark brown spot at middle; cilia brown, basal line yellowish brown. Hindwing greyish brown, with scattered dark brown scales, apex acute; cilia greyish brown, basal line greyish white. Legs greyish brown, with scattered dark brown scales.

Male genitalia (Fig. 4): Uncus spade-shaped, caudal margin bluntly rounded. Gnathos broad basally, sharply narrowing toward apex, hooked distally. Costal bar short, a subrectangular plate. Valva with basal half broad, sharply narrowed beyond middle; cucullus roundly dilated; costa gently concave medially; ventral margin roundly protruded ventrad beyond end of sacculus. Sacculus about 3/5 length of valva, basal half straight, parallel dorso-ventrally, distal half obliquely upward, deeply concave inward from ventral margin, forming a shallow groove with sclerotized rim in ventral view. Juxta sub-rectangular; anterior margin triangularly convex at middle; caudal margin concave in broad V shape at middle; lateral lobes straight on inner margin, rounded on outer margin. Vinculum with anterior margin almost straight. Aedeagus slender, about same length as valva, slightly broad basally, narrowed distally, curved at middle, distal 1/3 with densely packed very small spinules, with a narrow plate consisting of two rows of relatively large teeth.

Female unknown.

Diagnosis: This species is superficially similar to *S. kuni* Park, 2007, but can be distinguished by the forewing with costal margin slightly arched distally; the cucullus of the valva rounded apically, and the vinculum almost straight on the anterior margin in the male genitalia. In *S. kuni*, the costal margin of the forewing is almost straight; the valva is truncate dorso-apically, and the vinculum is bluntly rounded on the anterior margin.

Distribution: China (Shaanxi).

Etymology: The name of this species is derived from the Latin *brevis*- (short) and *clavatus* (claviform), in reference to the short claviform spot below middle of upper margin of the cell on the forewing.

Acknowledgements

We express our cordial thanks to Dr. K. T. Park for his valuable literatures. This study is supported by the Research Fund for the Doctoral Program of Higher Education of China (No. 20100031110024) and by the National Natural Science Foundation of China (No. 30930014).

BIBLIOGRAPHY

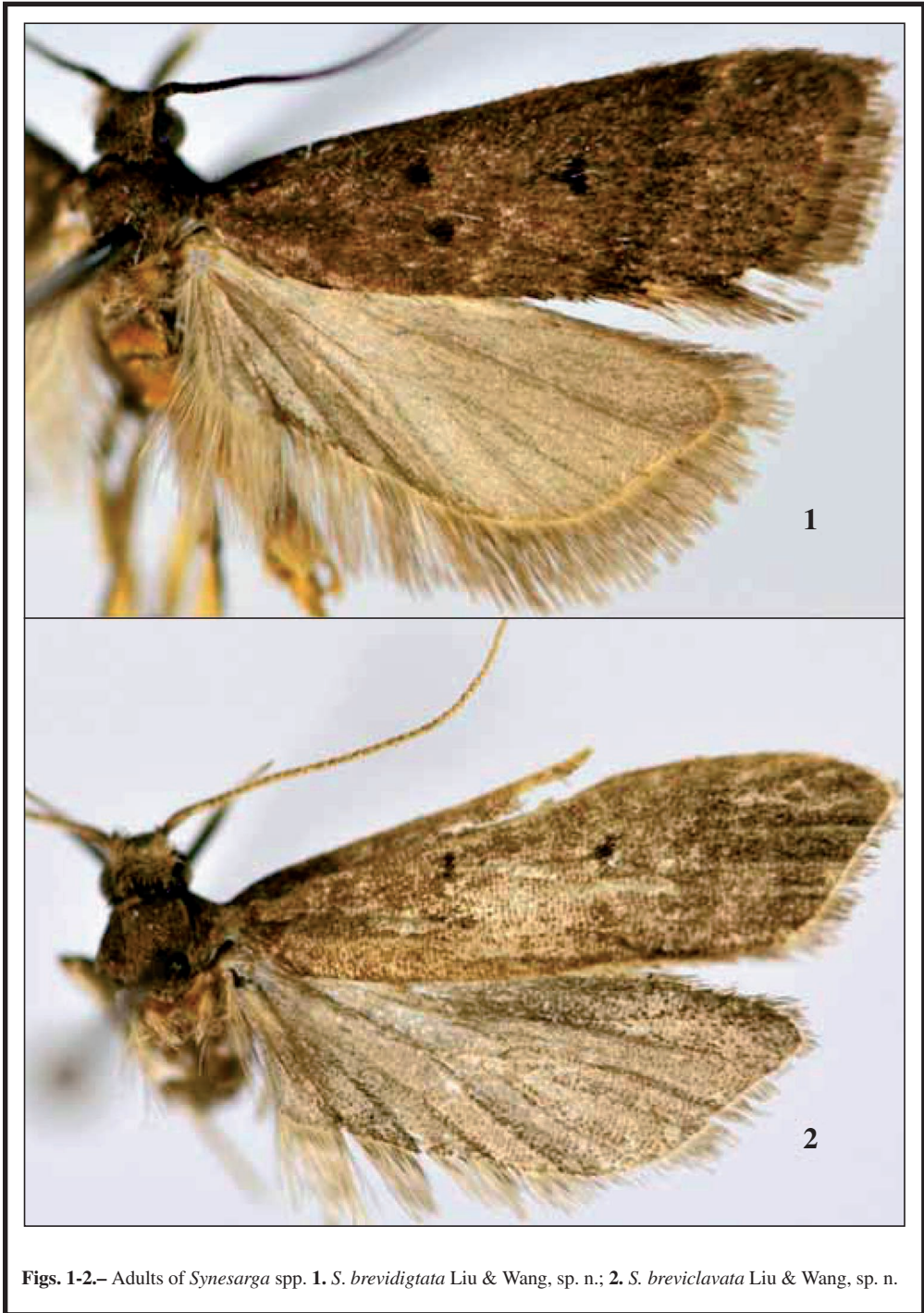
DIAKONOFF, A., 1951.– Entomological results from the Swedish expedition 1934 to Burma and British India. Lepid. Microlepidoptera 1.– *Arkiv for Zoologi*, **3**(6): 59-94.

- GOZMÁNY, L., 1978.– Lecithoceridae.– In H. G. AMSEL, F. GREGOR & H. REISSER (Eds).– *Microlepidoptera Palaearctica*, **5**: 306 pp. Georg Fromme & Co., Wien.
- MEYRICK, E., 1906.– Descriptions of Indian Microlepidoptera.– *Journal of the Bombay Natural History Society*, **17**: 142-144, 148.
- PARK, K.–T., 2000.– Lecithoceridae (Lepidoptera) of Taiwan (II). Subfamily Lecithocerinae: Genus *Lecithocera* Herrich-Schäffer and its allies.– *Zoological Studies*, **39**(4): 360-374.
- PARK, K.–T., 2007.– Lecithocerinae (Lepidoptera, Lecithoceridae) of Vietnam I. Genus *Homaloxestis* Meyrick and *Synesarga* Gozmány of Thailand, with description of five new species (Lepidoptera, Lecithoceridae).– *Journal of Asia-Pacific Entomology*, **10**(3): 201-209.
- PARK, K.–T., 2009.– Two new species of the genus *Tisis* Walker and *Synersaga* Gozmány (Lepidoptera, Lecithoceridae) from Thailand.– *Tropical Lepidoptera Research*, **19**: 1-3.
- PARK, K.–T. & BAE, Y.–S., 2012.– A new *Synersaga* species from Cambodia (Lepidoptera, Lecithoceridae), with a world catalogue of the genus.– *Zookeys*, **187**: 1-7.
- WU, C. & PARK, K.–T., 1999.– Taxonomic study on the Lecithoceridae (Lepidoptera) in Sri Lanka (IV). The subfamily Lecithocerinae and its allies.– *Insecta Koreana*, **16**(2): 131-142.

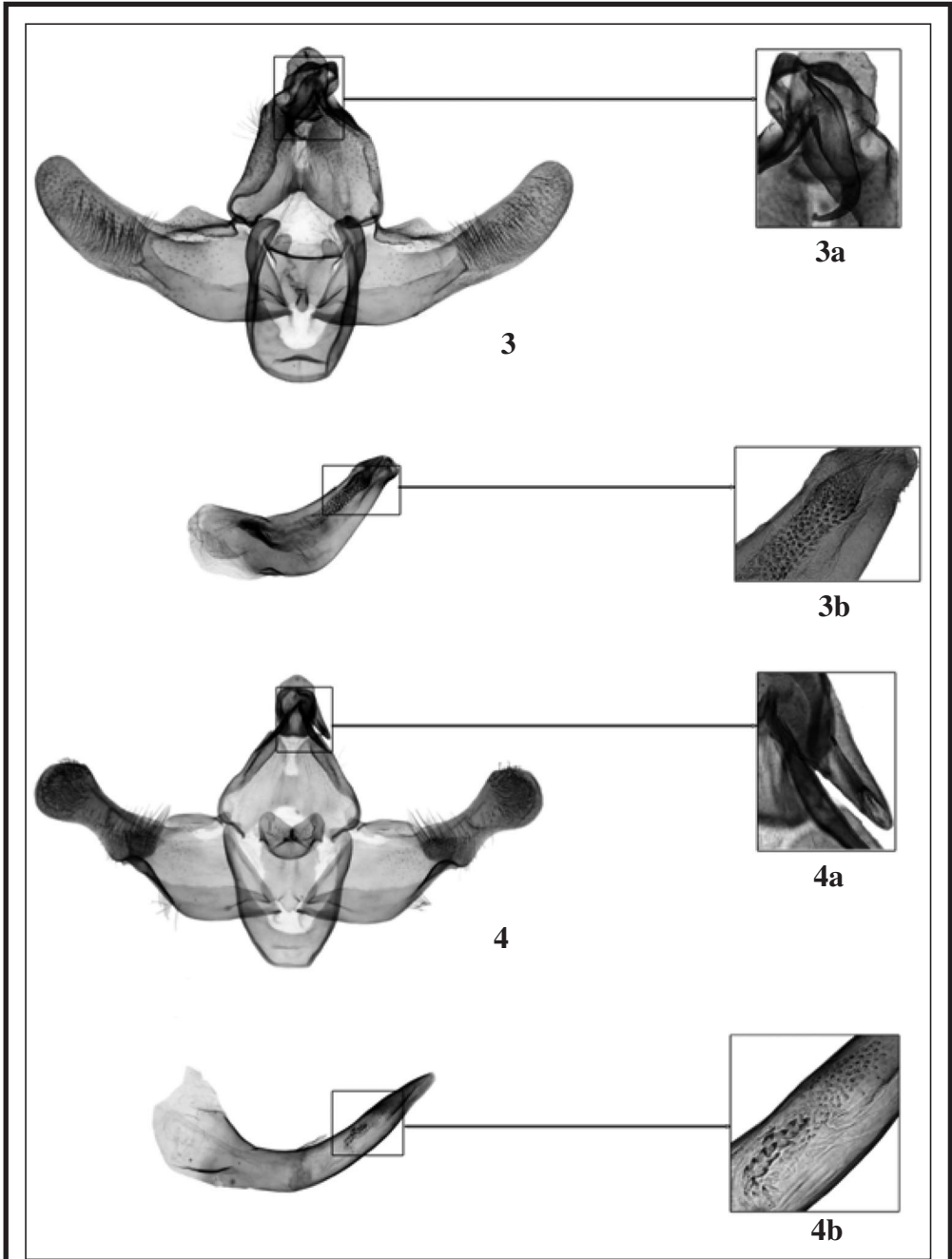
S. R. L., *S. X. W.
College of Life Sciences
Nankai University
Tianjin 300071
R. P. CHINA / P. R. CHINA
E-mail: shxwang@nankai.edu.cn

*Autor para la correspondencia / *Corresponding author*

(Recibido para su publicación / *Received for publication* 30-I-2013)
(Revisado y aceptado / *Revised and accepted* 17-IV-2013)
(Publicado / *Published* 30-III-2014)



Figs. 1-2.– Adults of *Synesarga* spp. **1.** *S. brevidigtata* Liu & Wang, sp. n.; **2.** *S. breviclavata* Liu & Wang, sp. n.



Figs. 3-4.— Male genitalia of *Synesarga* spp. **3.** *S. brevidigtata* Liu & Wang, sp. n.; **4.** *S. breviclavata* Liu & Wang, sp. n.; **a.** enlarged gnathos; **b.** part of enlarged aedeagus.