

**Revista Mexicana de  
Astronomía y Astrofísica**

Revista Mexicana de Astronomía y Astrofísica

ISSN: 0185-1101

rmaa@astroscu.unam.mx

Instituto de Astronomía

México

#### ERRATUM

Revista Mexicana de Astronomía y Astrofísica, vol. 39, núm. 2, octubre, 2003, pp. 331-333

Instituto de Astronomía

Distrito Federal, México

Available in: <http://www.redalyc.org/articulo.oa?id=57139217>

- How to cite
- Complete issue
- More information about this article
- Journal's homepage in redalyc.org

redalyc.org

Scientific Information System

Network of Scientific Journals from Latin America, the Caribbean, Spain and Portugal

Non-profit academic project, developed under the open access initiative

## ERRATUM

*Received 23rd September 2003; accepted 23rd September 2003*

Due to a regrettable error in the production process, two figures in the printed version of RevMexAA volumen 39 no. 1, 2003, were published in black-and-white; they should have appeared in color.

They correspond to the papers by Salas et al., p. 77, and de la Fuente et al., p. 127.

In the following pages the figures are published in color.

H<sub>2</sub> Velocity Structure in HH 211  
L. Salas, I. Cruz-González, and M. Rosado

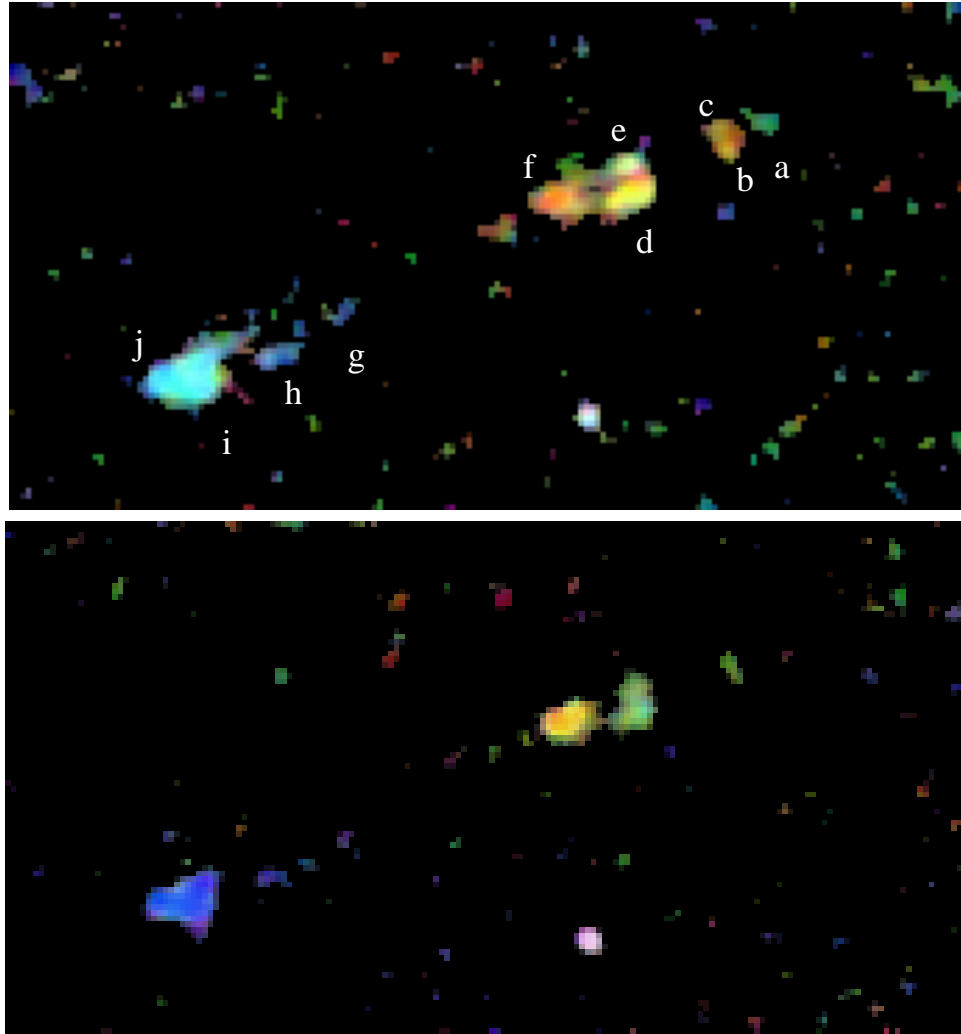


Fig. 1. Color composite of Doppler-shifted H<sub>2</sub> emission in HH 211. Colors correspond to the following LSR velocity channels: (a) Low-velocity. Blue  $0.6 \text{ km s}^{-1}$ , green  $10 \text{ km s}^{-1}$ , and red  $30 \text{ km s}^{-1}$ . (b) High-velocity. Blue  $0.6 \text{ km s}^{-1}$ , green  $10 \text{ km s}^{-1}$ , and red  $30 \text{ km s}^{-1}$ . The region shown is  $2.5' \times 1.3'$ , North is at the top and East is to the left. Labels a through j follow the H<sub>2</sub> knots nomenclature of McCaughrean et al. (1994).

The Radial Velocity Profiles of some Proplyds in the Orion Nebula  
 E. de la Fuente, M. Rosado, L. Arias, and P. Ambrocio-Cruz

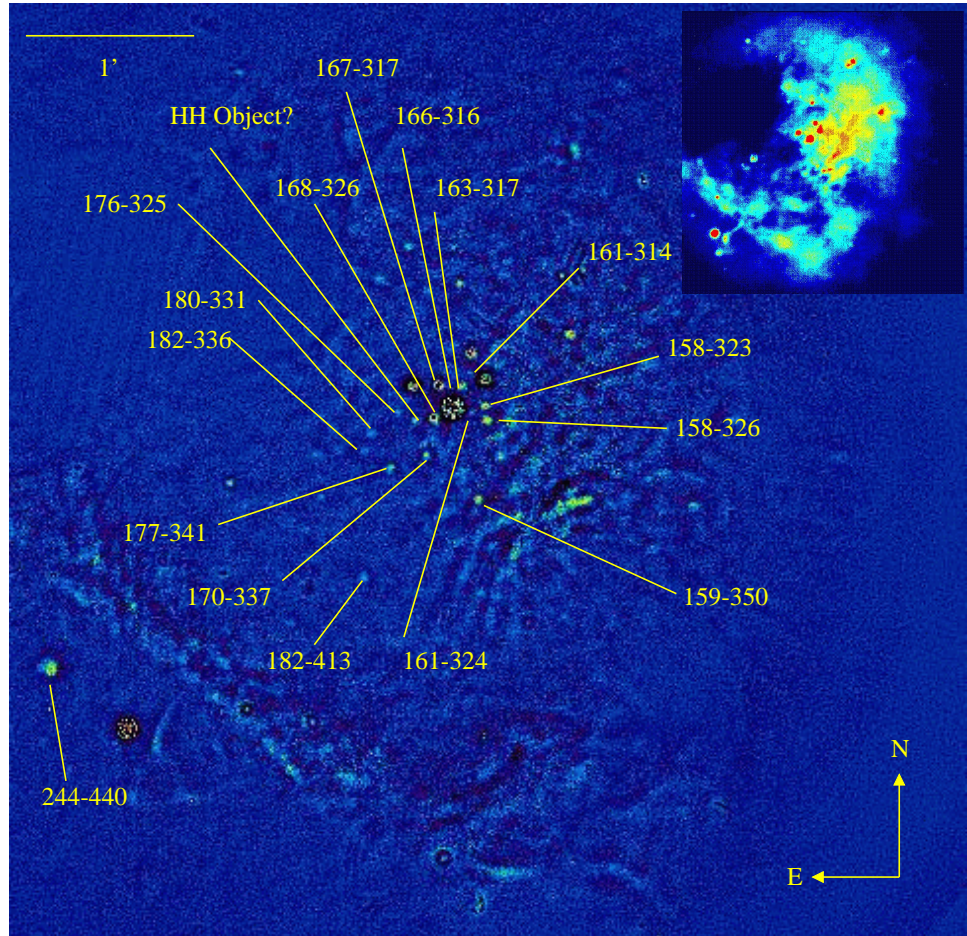


Fig. 2. Unsharp-masked  $H\alpha$  velocity map at heliocentric velocity of  $-127 \text{ km s}^{-1}$ . The original image published by Rosado et al. (2001;2002) is shown in the insert. The identified proplyds are marked.