



Revista Facultad Nacional de Agronomía Medellín

ISSN: 0304-2847

ISSN: 2248-7026

Facultad de Ciencias Agrarias - Universidad Nacional de Colombia

Benavides-Cardona, Carlos Andrés; Marcillo-Paguay, Carlos Alberto; Gómez-Gil, Luis Fernando; Romero, Juan Vicente  
Physiological and yield response to fertilization of short-cycle  
*Solanum tuberosum* cultivars in three high-Andean environments  
Revista Facultad Nacional de Agronomía Medellín,  
vol. 75, no. 3, 2022, September-December, pp. 1-14  
Facultad de Ciencias Agrarias - Universidad Nacional de Colombia

DOI: <https://doi.org/10.15446/rfnam.v75n3.99191>

Available in: <https://www.redalyc.org/articulo.oa?id=179975179002>

- ▶ [How to cite](#)
- ▶ [Complete issue](#)
- ▶ [More information about this article](#)
- ▶ [Journal's webpage in redalyc.org](#)

UNEN  redalyc.org

Scientific Information System Redalyc

Network of Scientific Journals from Latin America and the Caribbean, Spain and Portugal

Project academic non-profit, developed under the open access initiative

# Physiological and yield response to fertilization of short-cycle *Solanum tuberosum* cultivars in three high-Andean environments

Respuesta fisiológica y de rendimiento a la fertilización de cultivares de ciclo corto de *Solanum tuberosum* en tres ambientes altoandinos

<https://doi.org/10.15446/rfnam.v75n3.99191>

Carlos Andrés Benavides-Cardona<sup>1</sup>, Carlos Alberto Marcillo-Paguay<sup>2</sup>,  
Luis Fernando Gómez-Gil<sup>2\*</sup> and Juan Vicente Romero<sup>2\*</sup>

## ABSTRACT

### Keywords:

Andigena  
Growth index  
Native genotypes  
Phureja  
Plant nutrition  
Productivity

The variability of potato cultivars and environments in the production area of Nariño-Colombia, demands the adjustment of agronomic recommendations for the improvement of crop management. Physiological behavior and yield of four short-cycle potato cultivars were evaluated: *Solanum tuberosum* Phureja groups (Mambera, Ratona Morada and Criolla Colombia) and Andigena (Morasurco), under three environments, characterized edaphoclimatically (AH1, AH2, and AH4) and three fertilization levels. The yield components did not present differences between these levels, except for AH2, where level 3 surpassed the others in yield, and AH3 for harvest index with differences between levels. Regarding the cultivars, there were statistical differences in all environments; the highest yield was obtained by Ratona Morada and Mambera in AH4, Criolla Colombia in AH1, and a homogeneous behavior for Morasurco in all environments. In AH1 and AH2 the physiological indexes were similar in proportion and occurrence, while in AH4 the behavior was variable, with higher values in Morasurco and Mambera. ANOVA and discriminant analysis of principal components (DAPC) differentiated Morasurco from Phureja cultivars and Criolla Colombia from Ratona and Mambera. The grouping of environments in the DAPC ratifies the classification of the environments. The nutritional requirements of the genotypes can be limited by elements different from those evaluated; the productivity was mainly influenced by the environments; Mambera and Ratona Morada are established as alternatives in the AH4 environment, and Criolla Colombia and Morasurco in the other environments.



## RESUMEN

### Palabras clave:

Andigena  
Índice de crecimiento  
Genotipos nativos  
Phureja  
Nutrición vegetal  
Productividad

La variabilidad de cultivares de papa y ambientes en la zona productora de Nariño-Colombia, demanda el ajuste de recomendaciones agronómicas para mejorar el manejo del cultivo. Se evaluó el comportamiento fisiológico y el rendimiento de cuatro cultivares de papa de ciclo corto: *Solanum tuberosum* grupos Phureja (Mambera, Ratona Morada y Criolla Colombia) y Andigena (Morasurco), bajo tres ambientes caracterizados edafoclimáticamente (AH1, AH2 y AH4) y tres niveles de fertilización. Los componentes de rendimiento no presentaron diferencias entre estos niveles, a excepción de AH2, donde el nivel 3 superó a los demás en rendimiento y AH3 para índice de cosecha con diferencias entre niveles. Con respecto a los cultivares, hubo diferencias estadísticas en todos los ambientes; el mayor rendimiento lo obtuvo Ratona Morada y Mambera en AH4, Criolla Colombia en AH1 y un comportamiento homogéneo para Morasurco en todos los ambientes. En AH1 y AH2 los índices fisiológicos fueron similares en proporción y ocurrencia, mientras en AH4 el comportamiento fue variable, con mayores valores en Morasurco y Mambera. El ANOVA y el análisis discriminante de componentes principales (DAPC) diferenciaron a los cultivares Morasurco de Phureja y a Criolla Colombia de Ratona y Mambera. La agrupación de ambientes en el DAPC ratifica la clasificación de los ambientes. Los requerimientos nutricionales de los genotipos pueden estar limitados por elementos diferentes a los evaluados; la productividad fue influenciada principalmente por los ambientes; se establece a Mambera y Ratona Morada como alternativa en el ambiente AH4, y Criolla Colombia y Morasurco en los otros ambientes.

<sup>1</sup> Facultad de Ciencias Agrícolas, Universidad de Nariño. Pasto, Colombia. [cabenavides@udenar.edu.co](mailto:cabenavides@udenar.edu.co) 

<sup>2</sup> Corporación Colombiana de Investigación Agropecuaria – Agrosavia. Colombia. [cmarcillo@agrosavia.co](mailto:cmarcillo@agrosavia.co) , [lgomezg@agrosavia.co](mailto:lgomezg@agrosavia.co) ,

[jvromero@agrosavia.co](mailto:jvromero@agrosavia.co) 

\*Corresponding author

Potato, along with wheat, rice, and maize are of great global importance as a food source, due to their nutritional and medicinal value (Arcos and Zúñiga, 2016). In *Solanum tuberosum*, the Tuberosum and Andigena groups are the most important, by area planted and production volume, and the Phureja group, to which the so-called creole potatoes belong, is of special relevance in Colombia due to its acceptance among consumers, for its good taste, nutritional quality, agro-industrial suitability, lower costs and production cycles (Molina-Cita *et al.*, 2015).

In Colombia, potato is grown in high areas of the three mountain ranges, 90% corresponds to the Andigena group and the remaining 10% to the Phureja group (Fedepapa, 2017). Of the Andigena group, few cultivars have productive cycles of less than 5 months; Morasurco is one of them, which the farmer relates to the Phureja group because of the length of the cycle, the growing conditions and its management in the field, and post-harvest (Moreno, 2000). It is also a cultivar little described in the literature. Colombia is the main producer worldwide of Morasurco. In addition, it is the food base of peasant communities, especially in the South of the country, where it is considered its origin (Núñez, 2018).

The development of the crop has a wide variability of production conditions, which depend on environmental heterogeneity. Thus, the agronomic management activities obey the specific behavior of the cultivars and their interaction with the environments and systems. One of the main parameters that defines the type of activities in the cultivars corresponds to the tuber production cycles; these can be defined as early, medium, or late tuberization (Moreno, 2000).

For potato production in Colombia, regardless of the group or cultivar used, fertilization is one of the items with the highest share in production costs (approximately 20%). This practice is generally carried out based on empirical knowledge and in the absence of soil analysis. However, studies conducted by Bautista *et al.* (2012), on nutrient absorption in the Criolla Colombia variety, indicate that the elements N, P, K, Ca, Mg, Zn, B, and S are the most important and with the highest absorption up to 113 days after planting (DAP). Likewise, Torres and Suarez (2014) did not find differences in absorption levels after

77 DAP, when evaluating commercial doses in short cycle genotypes. Muñoz and Lucero (2008) found higher yields for commercial varieties when they added between 800 and 1200 kg ha<sup>-1</sup> of organic matter and 300 kg ha<sup>-1</sup> of 13-26-6 (NPK -nitrogen-phosphorus-potassium).

In addition to the nutritional component, factors such as environment and cultivar and their interaction determine yield capacity. Yield studies of the Phureja group vary significantly when contrasting traditional cultivars with commercial varieties. For example, yields from 6.2 to 27 t ha<sup>-1</sup> have been reported for the former (Gómez-García, 2017) and for the latter up to 41.8 t ha<sup>-1</sup> (Santos, 2010; Bautista *et al.*, 2012). Silva *et al.* (2017) evidenced effects on physiological parameters in creole potato with variation in doses of potassium fertilizers and different sowing densities, works that suggest variability in the responses associated with the interaction of environmental, nutritional, and genetic factors. Therefore, it is convenient to study fertilization on cultivars, in addition to nutrient doses, management systems, and interaction with particular soil and climatic conditions.

Marcillo *et al.* (2021) and Benavides *et al.* (2021) compiled relevant information and research results regarding potato cultivation in the department of Nariño, Colombia. In this sense, it is highlighted the definition of four zones or homogeneous environments with particular edaphoclimatic characteristics. These have among them differences in the mineral composition of the soils, management practices and socio-cultural aspects, which imply diversity of responses of the genotypes identified as predominant in the potato zone of the department.

Based on the above considerations, this study aimed to evaluate the response of four short-cycle potato cultivars (three genotypes of *S. tuberosum* Phureja group and one of *S. tuberosum* Andigena group) to differential fertilization levels and soil and climatic conditions.

## MATERIALS AND METHODS

### Location

The study was carried out in the South of the department of Nariño - Colombia, with evaluations in three of the four homogeneous environments characterized by Marcillo *et al.* (2021), for the potato-producing area (AH1, AH2 and AH4, respectively), which have particular edaphoclimatic

characteristics of altitude, precipitation, temperature, slope, texture and soil pH (Table 1). The experimental plots were located in farmers' properties in the municipalities of Guaitarilla, Providencia and Guachucal, respectively. The climatic conditions in each environment evaluated were: in Guaitarilla (AH1) an accumulated rainfall of 543.9 mm, distributed throughout the crop cycle and an average daily

temperature (ADT) of 13.7 °C (Figure 1a); in Providencia (AH2) an accumulated rainfall of 534.8 mm, with little rainfall at the beginning and end of the crop and an ADT of 12.1 °C (Figure 1b), lower than the historical range and, in Guachucal (AH3), accumulated precipitation of 479.4 mm, with low rainfall regimes at the end of the crop and an ADT of 9.9 °C (Figure 1c).

**Table 1.** Edaphoclimatic characteristics of three homogeneous production environments of *S. tuberosum* Phureja and Andigena groups in Nariño-Colombia and location of experimental plots.

Characteristics	Homogeneous Environment *		
	1 (AH1)	2 (AH2)	4 (AH4)
Location of the evaluation plot	1° 8' 8.87" N 77° 32' 46.53" W	1° 11' 26.55" N 77° 35' 13.67" W	1° 1' 50.83" N 77° 45' 42.24" W
Locality	Guaitarilla	Providencia	Guachucal
Altitude (masl)	2200-2600	2600-2800	3000-3400
Precipitation (mm year <sup>-1</sup> )	800-3000	800-3000	800-2800
Temperature (°C)	14.2-17.2	13.0-14.8	9.4-12.4
Pending (%)	5-12	25-50	50-75
pH	4.7-5.4	5.1-5.8	5.5-6.1
Organic matter (%)	6.0-8.0	5.0-10	20-35
Phosphorus (mg kg <sup>-1</sup> )	60-115	45-120	80-190
Potassium (cmol <sup>+</sup> kg <sup>-1</sup> )	0.6-0.9	0.4-0.8	0.6-10
Calcium (cmol <sup>+</sup> kg <sup>-1</sup> )	2.0-4.1	2.5-4.5	3.0-6.4
Magnesium (cmol <sup>+</sup> kg <sup>-1</sup> )	0.7-1.6	0.5-0.9	0.3-0.8

\* Adapted from: Benavides *et al.* (2021)

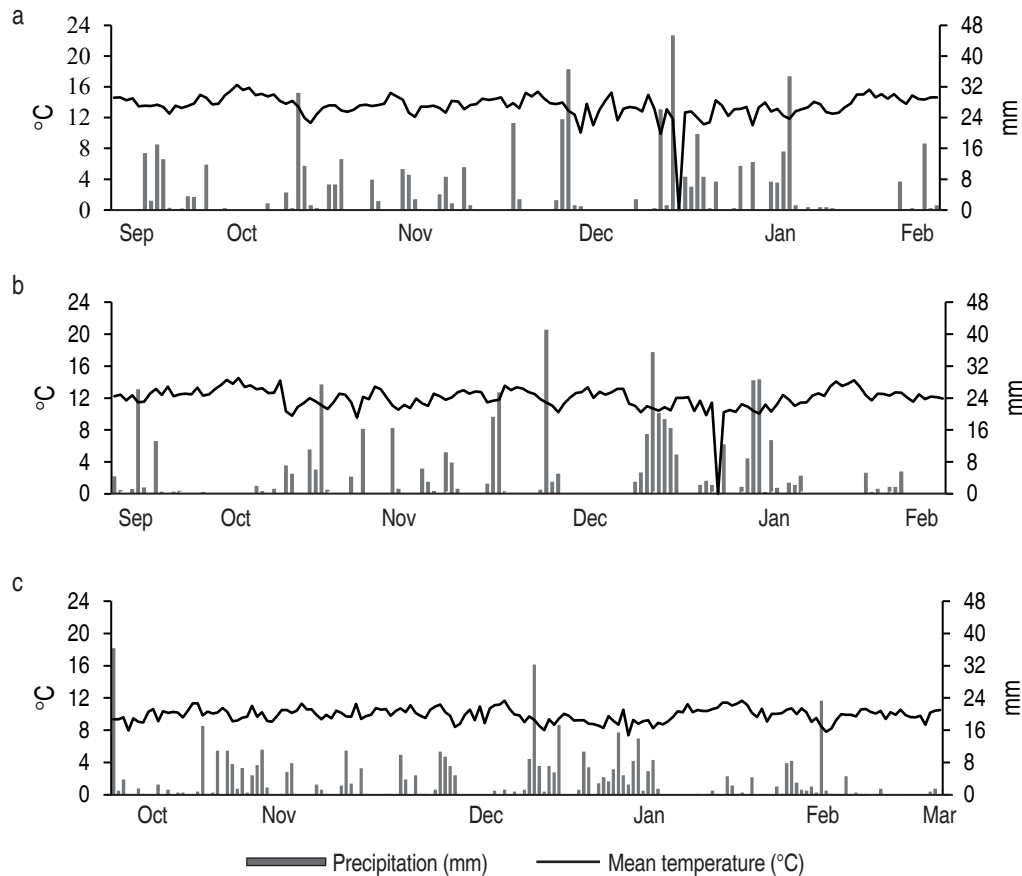
### Plant Material

The traditional cultivars Mambera and Ratona Morada and the varieties Criolla Colombia and Morasurco were evaluated. These were classified as the most frequently cultivated, in the short-cycle group, based on the characterization of the production system in Nariño (Benavides *et al.*, 2021). Mambera has a semi-extended growth habit, green stems, round tubers with deep eyes and red skin with cream spots. On the other hand, the growth habit of Ratona Morada is semi-erect, pigmented stem, purple-skinned tuber and white pulp (Tinjacá and Rodríguez, 2015). Criolla Colombia shows semi-erect plants, with thin stems and round tubers with yellow pulp and skin (Moreno, 2000). Morasurco has erect plants, thick dark green stems, flattened round tubers, purple skin with cream spots and cream-colored pulp, and has

a similar crop cycle to Criolla Colombia, Mambera and Ratona Morada, which is why it was included in this study.

### Experimental design

An experiment was established in each environment under a randomized complete block design with a split-plot arrangement and three replications. The main plot included three fertilization levels based on input from average soil analyses for the area and requirements of commercial varieties (Table 2) and the subplot included the four cultivars mentioned above. The experiments were established considering a planting density of 33.333 plants ha<sup>-1</sup>. Each experimental plot occupied an area of 42 m<sup>2</sup>, of which 25 m<sup>2</sup> were used for the evaluations.



**Figure 1.** Climogram of experimental plots corresponding to classifications AH1, AH2 and AH4 in three municipalities of Nariño-Colombia: (a) Guaitarilla, (b) Providencia and (c) Guachucal, during the evaluation period (2017-2018).

### Agronomic and physiological variables

Variables evaluated were selected according to the yield parameters. Destructive sampling was done every two weeks, from emergence to harvest, for a total of 24 plants per treatment; the samples were taken to an oven, Memmert brand, and kept at 70 °C until constant dry weight. With the information obtained, the accumulation of dry matter of the plant until the harvest was calculated. In addition, the leaf area was determined and in the field the soil area covered by the foliage, to estimate along with the above information: leaf area index (LAI), net assimilation rate (NAR), crop growth rate (CGR), and relative growth rate (RGR), according to methodologies adapted from Pandey *et al.* (2017). Harvest index (HI) was calculated as the ratio of tuber dry matter to that of the total plant, according to Mohamed *et al.* (2017).

**Table 2.** Fertilization levels for four short-cycle potato cultivars of the Phureja and Andigena groups in three environments.

Level	Contribution kg ha <sup>-1</sup>		
	N	P <sub>2</sub> O <sub>5</sub>	K <sub>2</sub> O
N1	25	75	50
N2	40	100	75
N3	50	125	100

In each experimental unit, in addition to the total yield, the number, size, and weight of tubers were recorded. A tuber size scale was generated for the cultivars of the Phureja group, according to the commercial classification in the area (Table 3). For Morasurco, the Colombian Technical Standard NTC 341 (ICONTEC, 1996) was used. The results of tubers of size zero and first in a single group were considered because they represent a higher commercial value.

**Table 3.** Classification of tubers by diameter for Criolla Colombia, Mambera and Ratona Morada.

Size	Diameter (cm)		
	Criolla Colombia	Mambera	Ratona Morada
Zero	>5.0	>8.0	>7.0
First	3.5 to 5.0	6.0 to 7.9	5.5 to 6.9
Second	2.0 to 3.4	2.5 to 5.9	4.0 to 5.4
Third	<2.0	<2.5	<4.0

### Statistical analysis

Analysis of variance (ANOVA) was performed for each yield component and comparison of means with Tukey's test ( $P=0.05$ ). Models were generated to explain dry matter accumulation by cultivar, in each evaluated environment. Discriminant analysis of principal components (DAPC) was performed with yield variables and physiological indices. This is a multivariate method to identify and describe groups of related individuals, which allows visual assessment of the differentiation between groups. The packages ExpDes (Ferreira *et al.*, 2013), Adegenet (Jombart, 2008) were used in the statistical program R, version 4.0.3. (R Core Team, 2020).

## RESULTS AND DISCUSSION

### Performance Components

In environment AH1 the highest yield was reached by Morasurco ( $38.5 \text{ t ha}^{-1}$ ) and the lowest by Ratona Morada ( $19.4 \text{ t ha}^{-1}$ ). The yield of tubers of greater commercial value (size zero and first) of Criolla Colombia was  $18.7 \text{ t ha}^{-1}$ , which represents 80% of its total yield, contrasting with  $24.0 \text{ t ha}^{-1}$  in Morasurco, corresponding to 62%. In the number of tubers per plant, Criolla Colombia presented the highest value (24.5), while at the other extreme, Mambera and Ratona Morada presented 13.2 and 12.8, respectively. The HI for this environment ranged between 0.40 and 0.71, with statistical differences between Criolla Colombia (0.40) and the other cultivars.

In the AH2 environment, the averages were below those obtained in AH1. However, the cultivars benefited with the highest fertilization level (N3), increasing the yield by about  $7 \text{ t ha}^{-1}$  with respect to the averages reached with the other two levels (Table 4). There was no interaction effect between levels and cultivars, but there were differences between cultivars for the variables yield, number of

tubers per plant and HI. For these variables, Morasurco presented the highest values, while Criolla Colombia, Mambera and Ratona Morada presented similar values between them, but lower than those observed in AH1.

Although AH4 produced  $5 \text{ t ha}^{-1}$  more at the N3 level than N1 and N2, there were no statistical differences (Table 4). Fertilization levels also did not affect the number of tubers per plant, but the HI was higher than those observed in the other environments. In this environment there were differences for cultivars in yield and number of tubers per plant; the genotypes with the highest yield were Morasurco ( $33.0 \text{ t ha}^{-1}$ ) and Mambera ( $30.8 \text{ t ha}^{-1}$ ). In the case of the number of tubers per plant and number of tubers of higher commercial value per plant stood out was Criolla Colombia.

In the evaluation of fertilization levels in *S. tuberosum*, Sifuentes *et al.* (2013) did not find differences in the extraction rates, but in the absorption levels. They inferred that this result is due to genetic and environmental factors, which determine the differential extraction between cultivars. This agrees with the results of the present work since differences were observed between genotypes within the environments, but it was not conclusive between the fertilization levels evaluated.

In Colombia, the importance of minor elements in potato fertilization is underestimated, since their application is not considered, although in the soil there are low levels of nutrients (Gómez *et al.*, 2006). According to Marcillo *et al.* (2021), magnesium is one of the elements that presents lower concentrations in soils of the producing zone of the department of Nariño, being this element a possible influential factor on the productivity of the crop.

**Table 4.** Average yield components for four short-cycle potato cultivars in three environments in the department of Nariño.

Environment/ Factor	Yield (t ha <sup>-1</sup> )	Yield of tubers of highest commercial value (t ha <sup>-1</sup> )	Number of tubers per plant	Number of tubers with the highest commercial value per plant	Harvest Index
Homogeneous Environment 1 (AH1)					
Level	0.724 ns	0.935 ns	0.531 ns	0.554 ns	0.332 ns
N1	28.8 a	20.9 a	18.0 a	10.1 a	0.62 a
N2	27.1 a	19.7 a	16.0 a	8.4 a	0.56 a
N3	27.0 a	20.6 a	17.6 a	8.7 a	0.54 a
Cultivar	<0.001 ***	0.005 **	<0.001 ***	0.002 **	<0.001 ***
Criolla Colombia	23.4 bc	18.7 ab	24.5 a	12.5 a	0.40 c
Ratona Morada	19.4 c	15.6 b	12.8 c	8.3 b	0.55 b
Mambera	29.3 b	23.3 a	13.2 c	8.6 b	0.64 ab
Morasurco	38.5 a	24.0 a	18.3 b	6.9 b	0.71 a
Level x Cultivar	0.981 ns	0.620 ns	0.615 ns	0.451 ns	0.175 ns
CV (%)	20.4	24.1	20.2	29.1	5.5
Homogeneous Environment 2 (AH2)					
Level	0.044 *	0.252 ns	0.165 ns	0.436 ns	0.351 ns
N1	16.3 b	11.1 a	12.6 a	5.7 a	0.60 a
N2	17.1 b	10.7 a	15.2 a	5.9 a	0.59 a
N3	23.7 a	15.0 a	15.8 a	7.2 a	0.56 a
Cultivar	<0.001 ***	0.171 ns	0.003 **	0.103 ns	<0.001 ***
Criolla Colombia	12.5 b	8.9 a	18.6 a	8.4 a	0.55 b
Ratona Morada	14.6 b	10.0 a	11.1 b	4.5 a	0.55 b
Mambera	17.2 b	14.0 a	11.1 b	6.4 a	0.54 b
Morasurco	31.2 a	16.3 a	17.4 a	5.8 a	0.69 a
Level x Cultivar	0.891 ns	0.675 ns	0.982 ns	0.835 ns	0.825 ns
CV (%)	41.9	61.9	31.8	49.8	13.9
Homogeneous Environment 4 (AH4)					
Level	0.503 ns	0.284 ns	0.734 ns	0.192 ns	0.002**
N1	25.1 a	13.9 a	20.3 a	5.8 a	0.67 a
N2	25.9 a	15.6 a	21.2 a	7.4 a	0.74 b
N3	30.7 a	20.3 a	21.3 a	9.8 a	0.70 c
Cultivar	<0.001 ***	<0.001 ***	<0.001 ***	<0.001 ***	<0.001 ***
Criolla Colombia	22.5 b	14.7 b	29.9 a	11.9 a	0.62 a
Ratona Morada	22.7 b	15.7 b	16.6 b	6.9 b	0.73 b
Mambera	30.8 a	24.5 a	16.5 b	8.6 b	0.72 b
Morasurco	33.0 a	11.4 b	20.7 b	3.3 c	0.74 b
Level x Cultivar	0.331 ns	0.518 ns	0.800 ns	0.455 ns	0.009**
CV (%)	15.5	30.9	24.5	36.6	5.0

\* Significance level  $P < 0.05$ . \*\* Significance level  $P < 0.01$ . \*\*\* Significance level  $P < 0.001$ . ns: not significant. In each variable, within each variation factor, the averages with equal letters are not statistically different according to Tukey  $\alpha < 0.05$ . CV: coefficient of variation.

Considering the above, the fact that no differences were found between NPK fertilization levels in the evaluated cultivars, could indicate that the yield improvement for these cultivars may be conditioned to other elements of low availability.

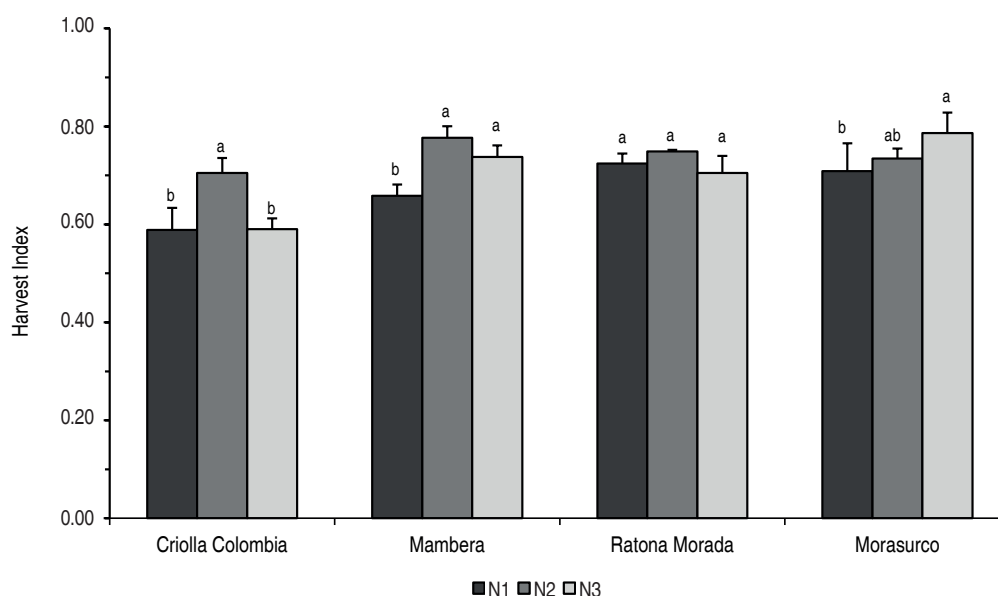
Besides yield, it is important to analyze quantitative variables and yield components, as a base for the estimation of parameters to intervene in the agronomic management of the crop (Hay and Walker, 1989). The behavior of the yield components in the cultivars was

different in each environment, especially in the Criolla Colombia variety, which constitutes an advantage that can be used in the response and specific yield. It would be valid to propose particular practices between environments within cultivars and to identify productive alternatives by region (Huerta-Fernández *et al.*, 2021).

Regarding HI results, the interaction level by cultivar was only significant in AH4 (Table 4; Figure 2); level N2 obtained higher HI for Criolla Colombia and Mambera, while N3 for Morasurco. Under harvest stages similar to those of the present study (senescent plant), Santos

(2010) obtained values in Phureja genotypes from 67 to 73% at 2859 masl and from 51 to 66% at 2572 masl, ranges similar to those found in the present work.

For varieties of *S. tuberosum* of the Andigena group, Núñez *et al.* (2009) found HI of 71 to 85%, coinciding with the behavior of the Morasurco variety in this study, which obtained in all environments the highest value (between 69 and 74%). The same authors suggest that parameters such as HI are essential in yield since it can be improved by agronomic practices that lead to a greater allocation of dry matter to the tubers.



**Figure 2.** Harvest index in response to three levels of fertilization for four potato cultivars, in homogeneous environment 4 (AH4: Guachucal-Nariño locality). Within each cultivar, means with equal letters are not statistically different ( $P < 0.05$ ).

### Dry Matter Accumulation and Physiological Indices

In the three environments, dry matter accumulation of all cultivars was adjusted to a quadratic model (Figure 3 a-c), with highly significant adjustments ( $R^2=0.97$ ;  $P < 0.01$ ). In AH1 and AH2 the length of the growing season was similar, but dry matter accumulation was lower in AH2. At the end of the cycle, the cultivar with the lowest dry matter accumulation in AH1 was Criolla Colombia ( $176.9 \text{ g plant}^{-1}$ ), followed by Mambera ( $250.5 \text{ g plant}^{-1}$ ) and Ratona Morada ( $288.5 \text{ g plant}^{-1}$ ) and the highest accumulation was in Morasurco with  $350.2 \text{ g plant}^{-1}$  (Figure 3a), and a cycle 15 days longer than the other three. For environments AH2 and AH4, dry matter

accumulation was in the same order, with lower values for Criolla Colombia, followed by Mambera, Ratona Morada, and Morasurco, with  $133.3 \text{ g plant}^{-1}$ ,  $161.8 \text{ g plant}^{-1}$ ,  $186.6 \text{ g plant}^{-1}$  and  $278.7 \text{ g plant}^{-1}$  in AH2 (Figure 3b) and  $218.9 \text{ g plant}^{-1}$ ,  $213.9 \text{ g plant}^{-1}$ ,  $272.7 \text{ g plant}^{-1}$  and  $302.8 \text{ g plant}^{-1}$  in AH4 (Figure 3c), respectively.

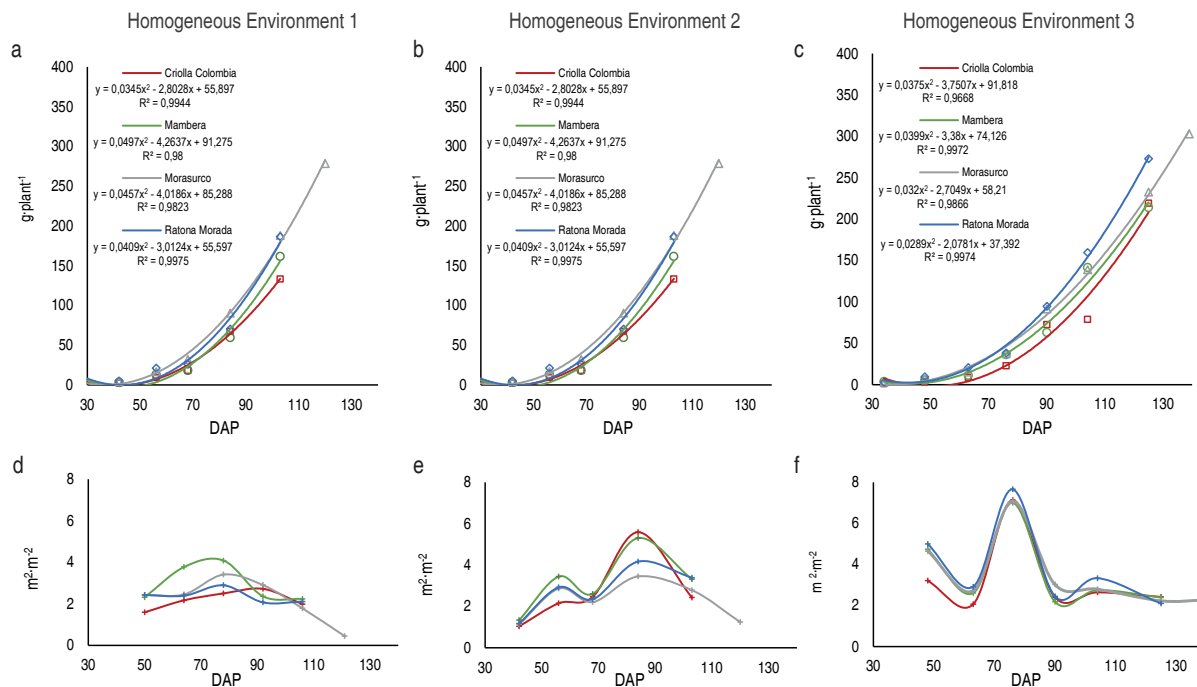
The dry matter content of a plant is related to the efficiency of the foliage to intercept and use solar radiation during its productive cycle. Besides being a genetically controlled trait, it is affected by genotype-by-environment interaction and management practices (Hay and Walker, 1989). This aspect was especially observed in AH4, where

the accumulation was slower, consistent with what was expected in the environment of higher altitude and lower average temperature.

Saldaña-Villota and Cotes-Torres (2020) evaluated this variable in three potato cultivars of the *Phureja* group at 2575 masl and found that regardless of the fertilization level used, the highest accumulation occurred in the same phenological stage, with a similar behavior among genotypes and values around 220 g plant<sup>-1</sup>. These values were higher than those found in the present work, even for Morasurco (Andigena), which, despite having an early tuberization cycle (Moreno, 2000), has a different architecture and leaf mass than the Phureja group. This result is possibly related to the climatic conditions during the evaluation, which was a relatively dry period (below requirements) in all environments.

Regarding the Leaf Area Index (LAI) in the AH1 environment, the highest values found were 4.1, 3.4, and 2.9 m<sup>2</sup> m<sup>-2</sup> at 78 DAP for Mambera, Morasurco and Ratona Morada, respectively (Figure 3d), while for Criolla Colombia, it occurred at 92 DAP with 2.7 m<sup>2</sup> m<sup>-2</sup>. In AH2, the LAI presented peaks at 56 and 84 DAP, for the four cultivars (Figure 3e), the latter being more pronounced. Ratona Morada showed the highest index (4.2 m<sup>2</sup> m<sup>-2</sup>), while the lowest value was for Morasurco (3.5 m<sup>2</sup> m<sup>-2</sup>). In AH4 there were also two defined peaks for LAI values, in the four cultivars: the first one close to 48 DAP and the second one at 76 DAP. The highest index value occurred in Ratona Morada (7.7 m<sup>2</sup> m<sup>-2</sup>), although the other three cultivars presented similar values (Figure 3f).

The LAI obtained its highest value in the tuberization phase and decreased from that moment until harvest.



**Figure 3.** Average accumulated dry matter (a, b, c) and leaf area index (d, e, f) of four potato genotypes in three environments. DAP: days after planting.

This behavior was also observed by Saldaña-Villota and Cotes-Torres (2020), in the evaluation of Phureja cultivars with different fertilization levels, which also agrees with the observations made by Santos-Castellanos *et al.* (2010). A decrease in the LAI value prior to the maximum peak was also observed, especially

in AH2 and AH4, behavior that is the result of agronomic practices or by translocation of assimilates that cause leaf abscission at the end of the cycle, that affect the components of the index (Montoya *et al.*, 2016). On the other hand, the differences in altitude between the evaluated environments, which would suppose a

higher thermal utilization index in lower altitudes or with less accumulated thermal time (Lizarazo, 2020), for the present study the time to tuberization was similar between environments, both for the cultivars of the Phureja group and for the Andigena group, due to lower precipitation in AH4.

The values obtained for the Net Assimilation Rate (NAR) were below  $0.1 \text{ g dm}^{-2} \text{ day}^{-1}$ . The maximum values were reached near 60 DAP for all cultivars in AH1 and AH2, while in AH4 they had a differential behavior among cultivars (Figure 4). This index is an indicator of photosynthetic efficiency, which relates the dry matter produced to the leaf area present during a given period of plant growth.

In AH1 all cultivars presented the highest NAR value at 64 DAP ( $0.095 \text{ g dm}^{-2} \text{ day}^{-1}$ ), then it decreased gradually, with a slight increase in the last period evaluated, except in Criolla Colombia, whose values decreased until the end of the period. The cultivars Criolla Colombia and Ratona Morada decreased in smaller proportion with respect to Mambera and Morasurco, which decreased to  $0.019$  and  $0.029 \text{ g dm}^{-2} \text{ day}^{-1}$ , respectively. In AH2, the maximum values was presented at 56 DAP, followed by the lowest rates at 68 DAP for all cultivars. In this environment, Criolla Colombia and Morasurco were the cultivars with less extreme variations, unlike Mambera and Ratona Morada, in which the NAR dropped to  $0.020$  and  $0.007 \text{ g dm}^{-2} \text{ day}^{-1}$ , respectively (Figures 4a and 4b).

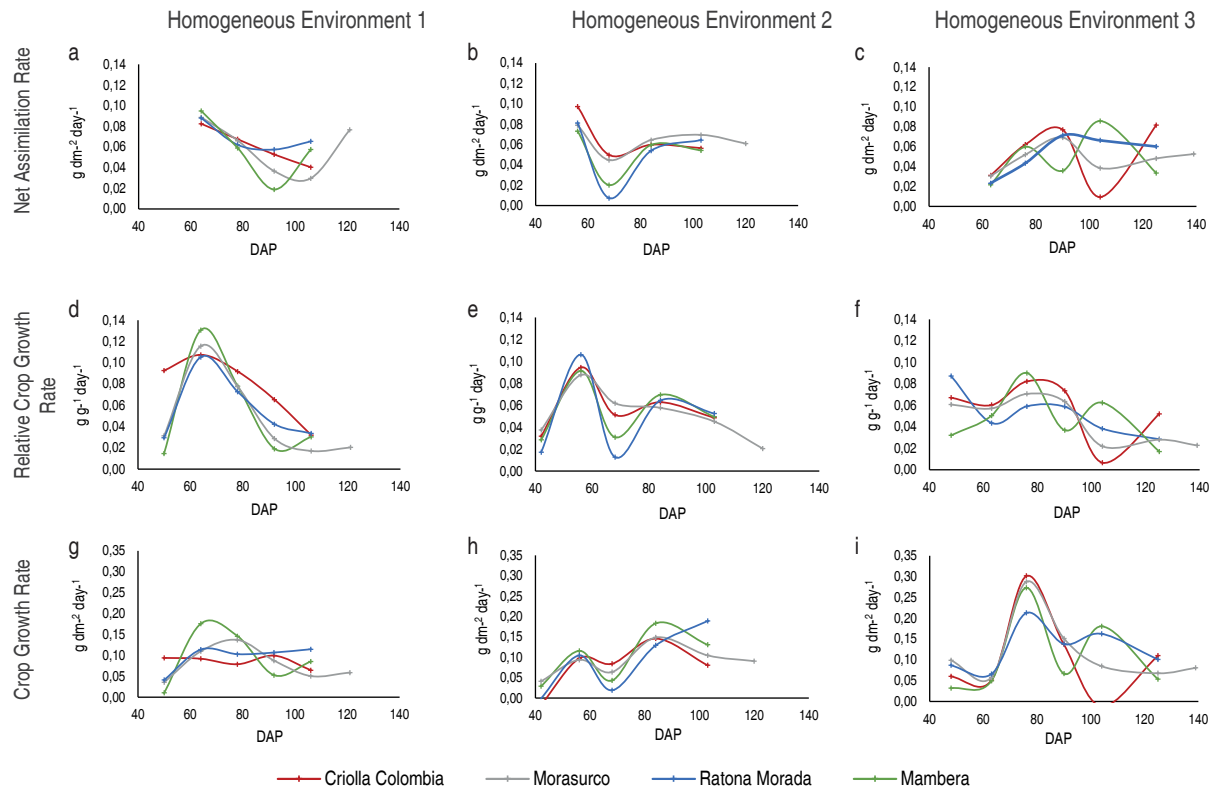
The NAR for AH4 presented a diverse behavior in each cultivar. Morasurco and Ratona Morada presented the highest value at 90 DAP ( $0.069$  and  $0.071 \text{ g dm}^{-2} \text{ day}^{-1}$  respectively). In Mambera the maximum NAR was presented at 104 DAP ( $0.086 \text{ g dm}^{-2} \text{ day}^{-1}$ ) and its lowest value at 125 DAP, inverse behavior to that of Criolla Colombia, which presented at 104 DAP with the lowest rate ( $0.009 \text{ g dm}^{-2} \text{ day}^{-1}$ ) and at 125 DAP the highest value ( $0.082 \text{ g dm}^{-2} \text{ day}^{-1}$ ) (Figure 4c).

The CGR was particular in each environment, in AH1 the maximum value was found in one growth stage, in AH2 two stages, and in AH4 there was not a predominant behavior (Figure 4). In AH1 the highest values obtained were  $0.10$ - $0.13 \text{ g g}^{-1} \text{ day}^{-1}$ , at 64 DAP for all cultivars

(Figure 4d). From this point, Criolla Colombia was the most efficient since it maintained higher values during the rest of the crop cycle. On the other hand, in AH2, Morasurco had only one maximum stage, in contrast to the other cultivars, which presented the first stage at 56 DAP and the second at 84 DAP (Figure 4e). In the case of AH4, the relative growth rates were lower than  $0.09 \text{ g g}^{-1} \text{ day}^{-1}$ . In the latter, the values for Mambera, Morasurco and Ratona Morada were not lower than  $0.02 \text{ g g}^{-1} \text{ day}^{-1}$  in the whole cycle (Figure 4f), unlike what was presented in the first two environments, where the CGRs went down to  $0.01 \text{ g g}^{-1} \text{ day}^{-1}$ . These results coincide with those reported by Santos (2010), who observed the highest values in the early stages of the crop cycle. In the case of Criolla Colombia, they agree that the minimum values of NAR were concordant with the minimum values of RGR under the influence of the low level of fertilization.

Similarly, in AH1, the highest value of CGR expressed as weight gain per unit area and time, occurred at different times in each cultivar and environment: for Mambera at 64 DAP ( $0.18 \text{ g dm}^{-2} \text{ day}^{-1}$ ), Morasurco at 78 DAP ( $0.14 \text{ g dm}^{-2} \text{ day}^{-1}$ ), Criolla Colombia 92 DAP ( $0.10 \text{ g dm}^{-2} \text{ day}^{-1}$ ) and Ratona Morada at 106 DAP ( $0.12 \text{ g dm}^{-2} \text{ day}^{-1}$ ). The last two presented the most stable growth throughout the cycle (Figure 4g). The CGR in AH2, in agreement with the RGR, presented two periods of increase in the rate, the first at 56 DAP and the second later at 84 DAP (Figure 4h). The four cultivars presented the highest growth rates in AH4, at 76 DAP, where  $0.301 \text{ g dm}^{-2} \text{ day}^{-1}$  was registered in Criolla Colombia,  $0.273 \text{ g dm}^{-2} \text{ day}^{-1}$  in Mambera,  $0.287 \text{ g dm}^{-2} \text{ day}^{-1}$  in Morasurco and  $0.213 \text{ g dm}^{-2} \text{ day}^{-1}$  in Ratona Morada. A second stage occurred in Ratona Morada and Mambera at 104 DAP (Figure 4i).

In contrast to this work, Saldaña-Villota and Cotes-Torres (2020) evidenced differences in growth through physiological parameters, as a response to various levels of fertilization. These authors observed higher growth in the Criolla Latina variety with the highest dose, while in the Guaneña variety with a lower dose, indicating different levels of earliness. However, similar to this study, there was a decrease in growth rates at the end of the cycle. Santos (2010) evaluated genotypes of Phureja in differential environmental conditions, who also observed the increase of growth rates until around the middle of the productive cycle, and then decrease until the end.



**Figure 4.** Growth rates in four short cycle potato genotypes in three environments: Net Assimilation Rate (a, b, c); Relative Crop Growth Rate (d, e, f); Crop Growth Rate (g, h, i). DAP: days after planting.

The behavior for the parameters NAR, RGR, and CGR, was predictable in terms of the altitudinal differential of the locations evaluated, showing the highest values in the highest environments. Therefore, these parameters should be analyzed at the cultivar level in each environment.

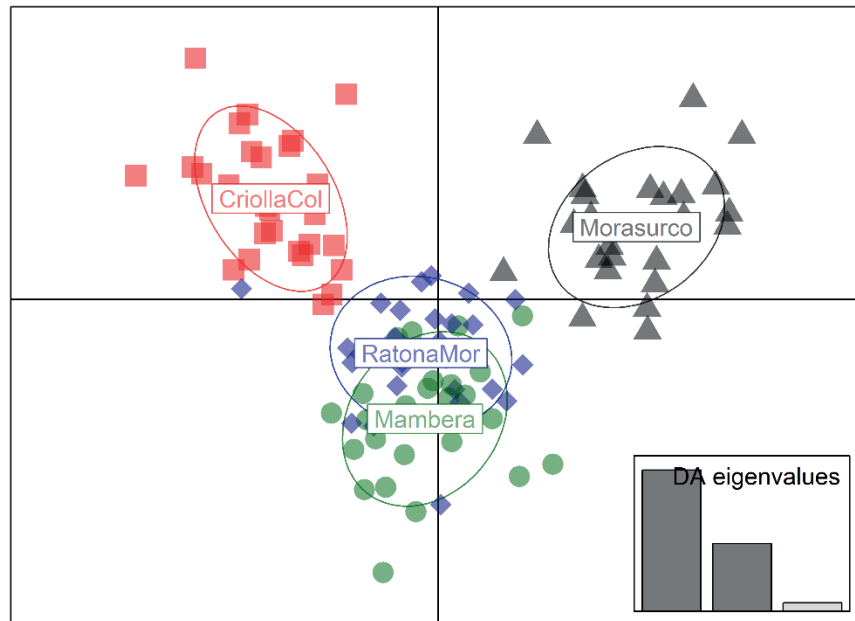
#### Discriminant analysis of principal components.

In the analysis of the physiological and yield variables, including information from the three environments, were summarized in the first two principal components of DAPC (Figure 5). The cultivars showed a response pattern where the Morasurco cultivar differs from the genotypes of the Phureja group and among these Criolla Colombia separates from Ratona Morada and Mambera that, according to the evaluated variables, have a similar behavior. The variables that had the greatest influence were HI, NAR, RGR, and CGR.

This result agrees with the differences captured in the analysis of variance between cultivars, within each environment (Table 4), which can be attributed to their genetic variability. This aspect was also considered by Huerta-Fernández *et*

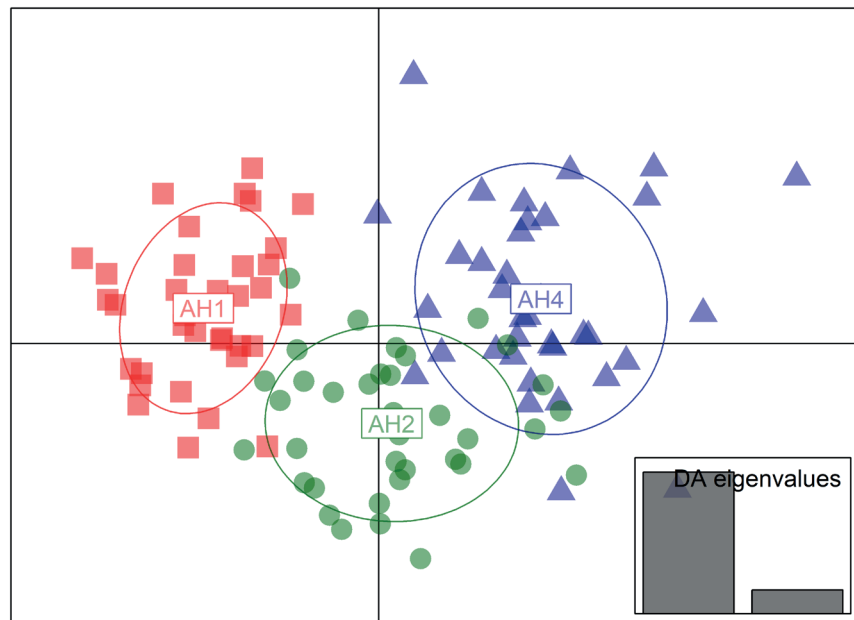
*al.* (2021), who attributed these differences to the genetic factor when they evaluated the yield of genotypes of the Phureja group in differential environments over time.

Two main groups can be found in the biodiversity of cultivated potatoes. The first group includes the so-called traditional or native varieties, which are the result of a process of domestication, selection, and ancestral conservation, and are generally associated with marginal production zones in high altitude or moorland areas. In the second are located the varieties that result from a process of genetic improvement; these possess attributes in terms of yield potential, resistance to phytopathogens, and organoleptic characteristics, among others (Monteros and Reinoso, 2010). The results evidenced in the present study agree with this classification. The genetic variability is represented initially by the Andigena group, with the variety Morasurco, coming from genetic improvement, while in the Phureja group the variety Criolla Colombia is a variety improved by clonal selection, which is separated from Ratona Morada and Mambera, which are traditional or native cultivars (Figure 5).



**Figure 5.** Biplot of DAPC of four short-cycle potato cultivars. The dispersion in the first two principal components is plotted, using the cultivars as a priori groups. The ellipses of inertia are subscribed according to the experimental units of the cultivars, in the three homogeneous environments evaluated, represented with squares for Criolla Colombia, diamonds for Ratona Morada, circles for Mambera and triangles for Morasurco.

On the other hand, the conformation of homogeneous environments based on altitude, climatic information, relief, and soils (Marcillo *et al.*, 2021), generated differential responses in the cultivars. The physiological variables NAR, RGR, and LAI had the greatest influence on the discrimination of environments in the DAPC (Figure 6).



**Figure 6.** Biplot of DAPC of short-cycle potato cultivars in three homogeneous environments (AH). The dispersion of four cultivars in the first two principal components of the DAPC is plotted, using the homogeneous environments as a priori groups. The inertia ellipses underwrite the experimental units of the cultivars, which for AH1 are represented by squares, for AH2 by circles and for AH4 by triangles.

The research of potato cultivars in different environments has been mainly focused on the genetic factor, caused in part by the processes of domestication, cultural exchange, and native or improved varieties that, according to the area where it is produced, acquire management plans associated with edaphoclimatic requirements, without considering fundamental aspects that can differentiate them. The choice of experimental plots in the present study was due to an adequate selection of environmental diversity for the producing area, ratifying the importance of the evaluation of practices or management systems of cultivars, which sometimes could be more efficient in specific areas.

## CONCLUSIONS

Considering yield and DAPC, differences in behavior were observed for the Morasurco cultivar with respect to the Phureja cultivars and within this group Criolla Colombia differed from the other two. The productivity of the evaluated cultivars was mainly influenced by the environments. Ratona Morada and Mambera are alternatives for high zones because they presented higher yield in AH4, an aspect possibly associated with its traditional character, which suggests better adaptation in high zones and, on the contrary, Criolla Colombia when evidencing better yield in AH1 and AH2 indicates its adaptation with respect to zones of higher altitude. Morasurco presented a similar behavior in the three environments, indicating wide adaptability of the cultivar in different productive conditions.

Except for the AH2 environment, for the variable yield per hectare, and AH3 for HI, the fertilization levels evaluated did not present statistical differences. This behavior was observed in the yield components as well as in the physiological parameters. Possibly the nutritional requirements of the evaluated genotypes are limited by elements different from those evaluated and it is required to deepen the evaluation of sources or levels related to secondary and minor elements that allow improving the productivity.

## ACKNOWLEDGEMENTS

The authors express their gratitude for allowing the development of the present investigation to the project "Mejoramiento Tecnológico y Productivo del Sistema papa en el Departamento de Nariño" financed by

the General System of Royalties with code BPIN N°2014000100022, executed by the Government of Nariño and operated by the Colombian Corporation of Agricultural Research - AGROSAVIA and the University of Nariño - UDENAR.

## REFERENCES

- Arcos J and Zúñiga D. 2016. Rizobacterias promotoras de crecimiento de plantas con capacidad para mejorar la productividad en papa. *Revista Latinoamericana de la Papa* 20(1): 18-31. <https://doi.org/10.37066/ralap.v20i1.241>
- Bautista HF, Ramírez WL and Torres J. 2012. Nutrient uptake of the diploid potato (*Solanum phureja*) variety criolla Colombia, as a reference point to determine critical nutritional levels. *Agronomía Colombiana* 30(3): 436-447. <https://revistas.unal.edu.co/index.php/agrocol/article/view/30176>
- Benavides CA, Marcillo C, Martínez E, Calvache D, Yandar S, Gómez LF and Insuasty S. 2021. Chapter 2: Caracterización geográfica y tecnologías locales de producción asociadas al sistema productivo papa en el departamento de Nariño. pp 63-88. In: Martínez E, Insuasty S, Benavides CA, Gómez LF, and Uribe P. (eds). *Caracterización de los sistemas productivos de papa en Nariño 2015-2020: conocimiento para la toma de decisiones*. Corporación Colombiana de Investigación Agropecuaria – Agrosavia. Bogotá. 252p. <https://doi.org/10.21930/agrosavia.analisis.7404814>
- Fedepapa - Federación Colombiana de Productores de papa. 2017. *Revista papa*. Órgano informativo de la federación nacional de papa, 48. Retrieved from: <https://fedepapa.com/revista-papa/>
- Ferreira EB, Cavalcanti PP, Nogueira DA. 2013. ExpDes: Experimental Designs package. R package version 1.1.2.
- Gómez MI, López M and Cifuentes C. 2006. El manganeso como factor positivo en la producción de papa (*Solanum tuberosum* L.) y arveja (*Pisum sativum* L.) en suelos del altiplano cundiboyacense. *Agronomía Colombiana* 24(2): 340-347.
- Gómez-García AJ. 2017. Efecto de la fertilización orgánica e inorgánica, sobre la productividad en el cultivo de papa criolla (*Solanum phureja*), en la finca Santo Domingo-Municipio de la Calera-Cundinamarca (Tesis de pregrado). Universidad Nacional de Cundinamarca. Ubaté. Colombia. 113 p.
- Hay RKM and Walker AJ. 1989. *An introduction to the physiology of crop yield*. Longman Scientific and Technical. 190 p.
- Huerta-Fernández P, Seminario Cunya A, Vásquez Arce V, Seminario Cunya J, Acosta M and Huerta-Fernández A. 2021. Productividad de quince cultivares tradicionales de papa *Phureja* en ocho ambientes distintos. *Revista Mexicana de Ciencias Agrícolas* 12(6): 949-960. <https://doi.org/10.29312/remexca.v12i6.2582>
- ICONTEC - Instituto Colombiano de Normas Técnicas y Certificación. 1996. *Industria alimentaria, papa para el consumo, clasificación*. NTC 341. Colombia.
- Jombart T. 2008. adegenet: a R package for the multivariate analysis of genetic markers. *Bioinformatics* 24(11):1403-1405. <https://doi.org/10.1093/bioinformatics/btn129>
- Lizarazo P. 2020. *Desarrollo, crecimiento y rendimiento de cultivares de papa diploide en ambientes contrastantes por altitud (Tesis de maestría)*. Universidad Nacional de Colombia. Bogotá, Colombia. 118 p.
- Marcillo-Paguay CA, Benavides-Cardona CA, Guatusmal-Gelpud

- C, Yandar-Erao SN and Romero JV. 2021. Zona papera nariñense: una mirada a los ambientes productivos. Corporación Colombiana de Investigación Agropecuaria – Agrosavia. 44 p. <https://doi.org/10.21930/agrosavia.nbook.7404777>
- Mohamed E, Wathier M, Zanuncio J and Santos R. 2017. Dry matter accumulation and potato productivity with green manure. *IDESIA* 35(1): 79-86. <http://doi.org/10.4067/S0718-34292017005000016>
- Molina-Cita Y, Caez-Ramirez G, Cerón-Lasso M and Garnica-Holguín A. 2015. Contenido de antioxidantes en papas criollas nativas (*Solanum tuberosum* L. grupo *Phureja*) en proceso de precocción y congelación. *Alimentos hoy* 23(36): 31-41. <https://alimentos.hoy.acta.org.co/index.php/hoy/article/view/341/292>
- Monteros C and Reinoso I. 2010. Biodiversidad y oportunidades de mercado para las papas nativas ecuatorianas. INIAP. Quito. 11 p.
- Montoya F, Camargo D, Ortega J, Córcoles J and Domínguez A. 2016. Evaluation of Aquacrop model for a potato crop under different irrigation conditions. *Agricultural Water Management* 164(2): 267-280. <https://doi.org/10.1016/j.agwat.2015.10.019>
- Moreno JD. 2000. Variedades de papa cultivadas en Colombia. In: Herrera C, Fierro L and Moreno J. (eds.). *Manejo integrado del cultivo de la papa: Manual técnico*. Produmedios. Bogotá. Colombia. 193 p.
- Muñoz LA and Lucero AM. 2008. Efecto de la fertilización orgánica en el cultivo de papa criolla *Solanum phureja*. *Agronomía Colombiana*, 26(2): 340-346. <https://revistas.unal.edu.co/index.php/agrocol/article/view/13520>
- Ñúñez C, Santos M and Segura M. 2009. Acumulación y distribución de materia seca de cuatro variedades de papa (*Solanum tuberosum* L.) en Zipaquirá, Cundinamarca (Colombia). *Revista Facultad Nacional de Agronomía Medellín* 62(1): 4823-4834. <https://revistas.unal.edu.co/index.php/refame/article/view/24881>
- Ñúñez C. 2018. Papas diploides: un legado ancestral para la agricultura en Colombia. Universidad Nacional de Colombia. In: Grupo de investigación en papa, <https://www.papaunc.com/blog/papas-diploides-un-legado-ancestral-para-la-agricultura-en-colombia>. Accessed: October 2021.
- Pandey R, Paul V, Das M, Meena M and Meena R. 2017. Plant growth analysis. In: *Manual of ICAR Sponsored Training Programme on "Physiological Techniques to Analyze the Impact of Climate Change on Crop Plants"*. 103-107 p. <https://doi.org/10.13140/rg.2.2.21657.72808>
- R Core Team 2020. R: A language and environment for statistical computing. R Foundation for Statistical Computing, Vienna, Austria.
- Saldaña-Villota TM and Cotes-Torres JM. 2020. Functional growth analysis of diploid potato cultivars (*Solanum phureja* Juz. et Buk.). *Revista Colombiana de Ciencias Hortícolas* 14(3): 402-415. <https://doi.org/10.17584/rcch.2020v14i3.10870>
- Santos-Castellanos M, Segura M and Ñúñez C. 2010. Análisis de Crecimiento y Relación Fuente-Demanda de Cuatro Variedades de Papa (*Solanum tuberosum* L.) en el Municipio de Zipaquirá (Cundinamarca, Colombia). *Revista Facultad Nacional de Agronomía Medellín* 63(1): 5253-5266. <https://revistas.unal.edu.co/index.php/refame/article/view/24945>
- Santos M. 2010. Evaluación del crecimiento, desarrollo y componentes de rendimiento de cuatro cultivares de papa criolla en dos localidades del departamento de Cundinamarca (Tesis de Maestría). Facultad de Agronomía, Universidad Nacional de Colombia. Bogotá. Colombia. 113p.
- Sifuentes-Ibarra E, Ojeda-Bustamante W, Mendoza-Pérez C, Macías-Cervantes J, Rúelas-Islas JDR and Inzunza-Ibarra MA. 2013. Nutrición del cultivo de papa (*Solanum tuberosum* L.) considerando variabilidad climática en el "Valle del Fuerte", Sinaloa, México. *Revista Mexicana de Ciencias Agrícolas* 4(4): 585-597. <https://doi.org/10.29312/remexca.v4i4.1191>
- Silva A, Alborno C and Criollo H. 2017. Efecto del potasio y la densidad de siembra en la producción de papa *Solanum tuberosum* Grupo *Phureja* var. Criolla Guañeña. *Temas Agrarios* 23(1): 37-46. <https://doi.org/10.21897/rta.v23i1.1145>
- Tinjacá S and Rodríguez L. 2015. Catálogo de papas nativas de Nariño. Colombia, 1a ed. Universidad Nacional de Colombia. Bogotá. 140p.
- Torres J and Suarez CA. 2014. Absorción de nutrientes en papa criolla (*Solanum phureja* var. Galeras) para determinar niveles críticos nutricionales. *Agronomía Colombiana* 32(1): 59-69. <https://doi.org/10.15446/agron.colomb.v32n1.41811>

