

Liver Abscess Caused by *Enterobius vermicularis* as a Differential Diagnosis for Liver Metastasis in Colorectal Cancer, Case Report

Julián A. Romo,^{1*} David E. Venegas-Visbal,² Laura A. López,³ Carlos Figueroa,⁴ David Baquero,⁵ Horacio Garzón,⁶ Andrea Recamán.⁷

OPEN ACCESS

Citation:

Romo J, Venegas-Visbal D, López L, Figueroa C, Baquero D, Garzón H, Recamán A. Liver Abscess Caused by *Enterobius vermicularis* as a Differential Diagnosis for Liver Metastasis in Colorectal Cancer, Case Report. *Rev Colomb Gastroenterol*. 2022;37(3):302-305. <https://doi.org/10.22516/25007440.790>

¹ MD, General Surgeon, Universidad del Rosario. Bogotá, Colombia.

² MD, General Surgery Resident, Universidad del Rosario. Bogotá, Colombia.

³ MD, Universidad del Rosario, Bogotá, Colombia.

⁴ MD, General Surgeon and Coloproctologist, Head of the Coloproctology Unit, Hospital Universitario Mayor Méderi. Bogotá, Colombia.

⁵ MD, General Surgeon and Coloproctologist, Hospital Universitario Mayor Méderi. Bogotá, Colombia.

⁶ MD, General Surgeon and Coloproctologist, Hospital Universitario Mayor Méderi. Bogotá, Colombia.

⁷ MD, Universidad del Rosario. Bogotá, Colombia.

*Correspondence: Julián Andrés Romo.
doctormo22@gmail.com

Received: 10/06/2021

Accepted: 09/08/2021



Abstract

Introduction: colorectal cancer is the fourth leading cause of cancer-related mortality worldwide. The identification of the metastases of this tumor in the preoperative stage is increasingly frequent due to the imaging studies currently available. We present the case of a patient with an infection caused by *Enterobius vermicularis* that simulates the presence of liver metastases. **Case presentation:** a female patient from a rural area showing a one-year abdominal pain evolution associated with lower gastrointestinal tract bleeding and weight loss. Endoscopic imaging and studies displayed a tumor lesion in the sigmoid colon, with biopsies reporting sigmoid colon adenocarcinoma and liver lesions suggesting malignancy. Anterior resection of the rectum and sigmoid was performed with high anastomosis and liver biopsies, which ruled out malignancy and reported the presence of liver infection by *E. vermicularis*. **Discussion:** in this case, the hepatic *E. vermicularis* infection was rare. This infection can simulate the presence of liver metastases; therefore, it should be considered a differential diagnosis of metastatic colorectal cancer.

Keywords

Colon cancer, rectum cancer, liver abscess, *Enterobius*.

INTRODUCTION

According to data from GLOBOCAN 2018⁽¹⁾, colorectal cancer ranks third in morbidity and fourth in cancer-associated mortality after lung and prostate cancer. Identifying advanced diseases (synchronous or metachronous) is becoming increasingly common with new, better-performing diagnostic methods. Intra-abdominal organs repre-

sent one of the greatest challenges in imaging suggestive of metastases from a primary colon lesion⁽¹⁾.

Enterobius vermicularis, also known as *Oxyurid vermicularis*, is a frequent helminthic infection in the United States and Eastern Europe. It predominantly affects the pediatric population⁽²⁾. The parasite lives and reproduces in the gastrointestinal tract. It usually lays eggs in the anal region with approximately 10,000-15,000 eggs overnight, causing

itching and discomfort⁽³⁾. This parasite has different ectopic locations in the human body, including the omentum, lungs, and liver, the latter, with very few cases reported in the literature⁽³⁾.

The following is a patient's case with adenocarcinoma of the sigmoid colon with images suggesting liver metastases, with subsequent histological confirmation of *E. vermicularis* infection.

CASE PRESENTATION

A 39-year-old Hispanic female patient from Villavicencio (Meta, Colombia) was admitted to the emergency room for a 1-year history of colicky abdominal pain on the left hemiabdomen, associated with a 20 kg weight loss in 4 months, self-limiting emesis, and rectal bleeding. She underwent a colonoscopy, in which an infiltrating mass with stenosis of 80% of the lumen of the sigmoid colon located 30 cm from the anal ridge was reported. Biopsies of the lesion reported moderately differentiated adenocarcinoma originating in tubulovillous adenoma.

Extension and staging studies were conducted, including a carcinoembryonic antigen quantified at 1.35 ng/mL, a computed axial tomography (CT) of the abdomen with contrast showing a polypoid mass dependent on the descending colon of roughly 45 mm in diameter, irregular, ulcerated, associated with stranding of the perilesional fat and adenopathies at the mesenteric edge. In addition, the liver showed a 98 mm focal lesion in segment VII and an approximately 10 mm focal lesion in segment IV (Figure 1). A magnetic resonance imaging (MRI) of the abdomen showed a 7 mm focal lesion in the IV liver segment and a 7.4 mm focal lesion in the right lobe, indicating liver metastases (Figure 2).



Figure 1. Abdomen CT scan using contrast, performed during admission, showing a sigmoid colon-dependent tumor with a large involvement of intestinal lumen.

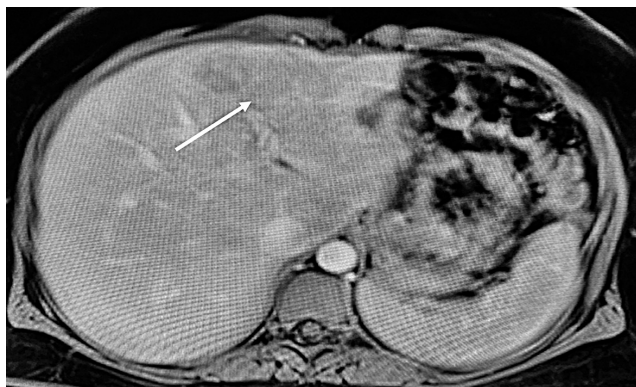


Figure 2. Abdomen MRI with contrast shows a liver lesion that does not rule out malignancy.

Based on these findings, anterior resection of the rectum and sigmoid was performed with high anastomosis and liver biopsy, as well as high ligation of the vascular pedicle. After a one-week hospital stay, the patient showed a good clinical evolution and was discharged for an outpatient check-up. Subsequently, after receiving the surgical pathology report, it showed a distinguishable adenocarcinoma of the sigmoid colon infiltrating up to the muscle layer, without lymphovascular or perineural invasion, as well as tumor-free resection edges and 0/16 positive nodes for a T2N0. As for the liver biopsy, a “necrosis and acute inflammation with *E. vermicularis* eggs, without evidence of malignancy in the material examined” report was obtained. Thus, the disease was classified as T2N0M0 for stage IB due to the absence of metastatic lung lesions. During outpatient follow-up, the patient received anthelmintic treatment; a check-up abdomen MRI was performed, showing a residual scar lesion in segment VII with scarring characteristics and another subcapsular lesion in segment IV.

DISCUSSION

There are few cases described of liver infection caused by *E. vermicularis*. In developed countries, this nematode, also known as *Oxyurid vermicularis*, produces a frequent helminthic infection and predominantly affects the pediatric population⁽²⁾. The parasite lives and reproduces in the gastrointestinal tract. It usually lays eggs in the anal region overnight, causing itching and discomfort⁽³⁾. The entrance route is through the ingestion of pinworm eggs through the fecal-oral route. They enter the stomach and small intestine, and the larvae migrate to the ileum, cecum, and appendix. The adult female settles in the ileum, where she copulates. Around the fifth week, she begins laying eggs and migrates toward the colon and anus. Then, she releases thousands of eggs onto the perianal skin. The eggs survive in a humid

environment and a low temperature⁽⁴⁾. It is unclear how the nematode can reach the liver. However, it is believed that it cannot penetrate intact tissues, so the presence of non-intact or injured intestinal mucosa (as in colorectal cancer) can facilitate its migration⁽⁵⁾.

Liver infection and abscess formation caused by *E. vermicularis* are extremely rare. Fewer than 10 cases have been reported in the literature, from which approximately 5 cases have been reported in patients with colorectal cancer and liver infection simulating liver metastases in imaging studies^(2,4,6,7).

Colorectal cancer ranks third in cancer morbidity; 1.4 million patients with this disease are diagnosed each year globally. Patients with metastatic disease or stage IV have an overall 5-year survival^(1,8). Nonetheless, depending on the stage, up to 50% of patients will at some point develop liver metastases^(8,9).

Abdominal ultrasound has a limited role in the complete characterization of liver lesions. Contrasting abdominal CT allows adequate identification and even volumetric calculations of liver lesions. Generally speaking, images suggesting metastasis describe a peripheral reinforcement in the arterial phase, and 11% may present calcifications⁽¹⁰⁾. Liver metastases are hypovascular in the arterial phase with hypervascular peripheral enhancement and heterogeneous hypoattenuation in the portal venous phase, with an 85% identification rate and a 96% positive predictive value (PPV).⁽¹⁰⁾

Several points help to discern between liver lesions suggestive of metastasis versus infectious liver lesions, such as margin in the portal venous phase, hepatic parenchyma enhancement, arterial border enhancement, dynamic change of arterial border enhancement, size discrepancy between arterial phase and portal venous phase, and perilesional hyperemia. Thus, according to Jae Gu Oh *et al* (**Table 1**)⁽¹¹⁾, abscesses, unlike metastases, have more defined margins in the portal venous phase, greater enhancement of the parenchyma, more peripheral (rim arterial) enhancement, and greater perilesional hyperemia. Regarding the dynamic changes of peripheral rim enhancement, abscesses report a higher enhancement persistence in the venous phase than metastases, which disappear in a higher percentage with the transition from the arterial to the venous phase⁽¹¹⁾.

A further important aspect to consider for liver lesions when comparing the arterial and portal venous phases is that there may be changes in size, as in liver abscesses, which may show changes in 45.2% compared to only 16.8% in cases of metastasis⁽¹¹⁾.

Another imaging study is MRI, which is more sensitive than CT in detecting metastatic liver lesions, particularly sub-centimeter size lesions, or for restaging lesions after

Table 1. Differences between liver abscess and liver metastases on abdominal CT

	Liver abscess	Liver metastases
Margins	Defined	Diffuse
Peripheral enhancement	Present in the arterial phase and persists in the venous phase	No peripheral enhancement in any phase
Size	Size change when comparing between phases	Constant size in all phases
Other	Higher bile duct dilation	Less parenchymal enhancement

neoadjuvant surgery, in which CT sensitivity drops to 77%⁽¹²⁾. Cases reporting liver infection by *E. vermicularis* suggest a predilection for the right hepatic lobe, close to the hepatic surface, with hypodense images in the CT between segments VII and VIII, similar to the findings in our patient^(2,12).

CONCLUSIONS

Colorectal cancer metastases represent an important percentage of the spread of this primary cancer. However, an important differential diagnosis for comprehensive patient treatment is liver infections caused by bacteria or parasites. Cases in which the *E. vermicularis* parasite produces an infection of the liver parenchyma and simulates, in turn, a metastasis of a primary colon tumor are rare but have been described in the literature. Since multiple diagnostic imaging modalities have been introduced, more liver lesions have been detected in the pre-surgical setting. The correct characterization of these lesions through the study by the pathology group prevents patients from being taken to major surgeries that include liver resections.

Conflicts of Interest

The authors have no conflicts of interest to declare.

Funding Source

The authors have no funding source to declare.

Acknowledgments

The authors have no acknowledgements to declare.

REFERENCES

1. Bray F, Ferlay J, Soerjomataram I, Siegel RL, Torre LA, Jemal A. Global cancer statistics 2018: GLOBOCAN estimates of incidence and mortality worldwide for 36 cancers in 185 countries. *CA Cancer J Clin*. 2018;68(6):394-424. <https://doi.org/10.3322/caac.21492>
2. Arkoulis N, Zerbinis H, Simatos G, Nisiotis A. *Enterobius vermicularis* (pinworm) infection of the liver mimicking malignancy: Presentation of a new case and review of current literature. *Int J Surg Case Rep*. 2012;3(1):6-9. <https://doi.org/10.1016/j.ijscr.2011.10.003>
3. Ng WS, Gallagher J, McCaughan G. "Pinworm" infection of the liver: unusual CT appearance leading to hepatic resection. *Dig Dis Sci*. 2004 Mar;49(3):466-8. <https://doi.org/10.1023/b:ddas.0000020505.46611.a0>
4. Valderrama-Treviño AI, Barrera-Mera B, Ceballos-Villalva JC, Montalvo-Javé EE. Hepatic Metastasis from Colorectal Cancer. *Euroasian J Hepatogastroenterol*. 2017;7(2):166-175. <https://doi.org/10.5005/jp-journals-10018-1241>
5. Cook GC. *Enterobius vermicularis* infection. *Gut*. 1994;35(9):1159-62. <https://doi.org/10.1136/gut.35.9.1159>
6. Little MD, Cuello CJ, D'Alessandro A. Granuloma of the liver due to *Enterobius vermicularis*. Report of a case. *Am J Trop Med Hyg*. 1973;22(4):567-9. <https://doi.org/10.4269/ajtmh.1973.22.567>
7. Kim HY, Kim CW, Kim DR, Cho YW, Cho JY, Kim WJ, et al. Recurrent pyogenic liver abscess as a presenting manifestation of colorectal cancer. *Korean J Intern Med*. 2017;32(1):174-177. <https://doi.org/10.3904/kjim.2015.301>
8. Meyers W, Neafie R, Marty A, Wear DJ. Pathology of infectious disease, volume I Helminthiases. Amer Registry of Pathology; 2000.
9. Bhullar DS, Barriuso J, Mullamitha S, Saunders MP, O'Dwyer ST, Aziz O. Biomarker concordance between primary colorectal cancer and its metastases. *EBioMedicine*. 2019;40:363-374. <https://doi.org/10.1016/j.ebiom.2019.01.050>
10. Chow FC, Chok KS. Colorectal liver metastases: An update on multidisciplinary approach. *World J Hepatol*. 2019;11(2):150-172. <https://doi.org/10.4254/wjh.v11.i2.150>
11. Oh JG, Choi SY, Lee MH, Lee JE, Yi BH, Kim SS, et al. Differentiation of hepatic abscess from metastasis on contrast-enhanced dynamic computed tomography in patients with a history of extrahepatic malignancy: emphasis on dynamic change of arterial rim enhancement. *Abdom Radiol (NY)*. 2019;44(2):529-538. <https://doi.org/10.1007/s00261-018-1766-y>
12. Tirumani SH, Kim KW, Nishino M, Howard SA, Krajewski KM, Jagannathan JP, et al. Update on the role of imaging in management of metastatic colorectal cancer. *Radiographics*. 2014;34(7):1908-28. <https://doi.org/10.1148/rg.347130090>



Available in:

<https://www.redalyc.org/articulo.oa?id=337782240007>

How to cite

Complete issue

More information about this article

Journal's webpage in redalyc.org

Scientific Information System Redalyc
Diamond Open Access scientific journal network
Non-commercial open infrastructure owned by academia

Julián A. Romo, David E. Venegas-Visbal,, Laura A. López,,
Carlos Figueroa,, David Baquero,, Horacio Garzón,,
Andrea Recamán.

**Liver Abscess Caused by *Enterobius vermicularis* as a
Differential Diagnosis for Liver Metastasis in Colorectal
Cancer, Case Report**

**Absceso hepático por *Enterobius vermicularis* como
diagnóstico diferencial de metástasis hepática en cáncer
colorrectal, reporte de caso**

Revista colombiana de Gastroenterología
vol. 37, no. 3, p. 302 - 305, 2022
Asociación Colombiana de Gastroenterología,
ISSN: 0120-9957
ISSN-E: 2500-7440

DOI: <https://doi.org/10.22516/25007440.790>