

Nutcracker Syndrome Combined with Wilkie Syndrome: Case Report

Juliana Suárez-Correa,¹ Wilfredo A. Rivera-Martínez,^{2*} Karen D. González-Solarte,² Christian F. Guzmán-Valencia,³ Mauricio Zuluaga-Zuluaga,⁴ Juan C. Valencia-Salazar.⁵

OPEN ACCESS

Citation:

Suárez-Correa J, Rivera-Martínez W, González-Solarte K, Guzmán-Valencia C, Zuluaga-Zuluaga M, Valencia-Salazar J. Nutcracker Syndrome Combined with Wilkie Syndrome: Case Report. *Rev Colomb Gastroenterol.* 2022;37(3):306-310. <https://doi.org/10.22516/25007440.797>

¹ Department of Gastroenterology and Endoscopy. Clínica Farallones, Cali, Colombia.

² Internal Medicine Resident. School of Health Sciences, Universidad Libre, seccional Cali, Colombia.

³ Radiologist. Radiology Department. Clínica Farallones, Cali, Colombia.

⁴ General Surgeon. General Surgery Area. Universidad del Valle, Cali, Colombia.

⁵ General Surgeon. General Surgical Department. Clínica Farallones, Cali, Colombia.

*Correspondence:

Wilfredo Antonio Rivera-Martínez.
antonioriveramartinez@gmail.com

Received: 21/06/2021

Accepted: 09/08/2021



Abstract

Objective: to describe the clinical presentation, diagnosis, and surgical treatment of a patient with superior mesenteric artery syndrome or Wilkie syndrome combined with the nutcracker syndrome or left renal vein compression syndrome in a tertiary referral center in a Latin American country. **Case description:** a 25-year-old male patient from the United States who attended for a year of weight loss and intestinal obstruction episodes of unknown etiology after multiple imaging studies. Endoscopic studies were performed without findings. While in the recovery room, he developed abdominal pain requiring admission to the emergency service. The CT enterography showed dilation of the colon loops and small intestine with a decrease of the aortomesenteric (AOM) angle and the gastrointestinal series with the filiform passage of the contrast medium. Conservative management was attempted as initial therapy with intolerance to enteric nutritional support. Finally, we initially opted for surgical treatment, with a slow recovery process, but in the end, with a resolution of symptoms and weight gain. **Conclusion:** Wilkie syndrome is a rare disease and a diagnostic challenge in patients with weight loss and abdominal pain. We described a superior mesenteric artery compression case in which diagnosis was achieved with multiple diagnostic strategies and complete resolution after surgical treatment. The decreased aortomesenteric angle may compress the superior mesenteric artery and the left renal vein. In this case, it resulted in a combined Wilkie and nutcracker syndrome.

Keywords

Superior mesenteric artery syndrome, Wilkie syndrome, superior mesenteric artery, syndrome/imaging, superior mesenteric artery syndrome/surgery, left renal vein syndrome, nutcracker syndrome, jejunum/surgery, intestinal obstruction/surgery.

INTRODUCTION

Superior mesenteric artery (SMA) syndrome has been referred to by different names, *Wilkie's syndrome*, *aorto-mesenteric compass syndrome*, *cast syndrome*, *chronic duodenal ileus syndrome*, and *arteriomesenteric duodenal occlusion syndrome*. When the angle is $< 25^\circ$, it is defined as the compression of the third portion of the duodenum between the abdominal aorta and the superior mesenteric artery (SMA)⁽¹⁻⁹⁾.

This syndrome is a rare cause of intestinal obstruction, with an estimated 0.1% to 0.3% incidence^(1,2). The abdominal aorta and SMA normally form an angle between 38° and 65° . Since the duodenum and left renal vein are located within the mesenteric angle, both types of compression may occur. Predisposing factors are associated with the decrease in the mesenteric fat pad between the aorta and the superior mesenteric artery, which reduces the angle and distance between the two. These conditions –congenital or

acquired, are associated with significant weight loss, including situations of hypermetabolism (trauma and burns), dietary conditions (anorexia nervosa and malabsorptive diseases), and conditions causing cachexia (AIDS, cancer, paraplegia)⁽¹⁻¹³⁾.

Because the clinical picture is variable, there is often a delay in diagnosis. The most typical clinical manifestations include reports of postprandial epigastric pain, nausea, vomiting, and early satiety with weight loss⁽¹⁻¹¹⁾. When SMA and Nutcracker syndrome coexists, hematuria, mainly microscopic, and proteinuria may appear when left renal vein stenosis is significant, which causes venous hypertension⁽¹⁰⁻¹⁴⁾. There are no currently validated clinical diagnostic criteria; thus, imaging studies may confirm a suspicion⁽⁵⁻¹⁰⁾. Conservative treatment has been proposed as the first line of action, in which nutritional support seeks to recover the mesenteric pad. Frequently, failure in therapy determines the need for surgical intervention, with high success rate reports in the literature⁽¹⁻¹³⁾.

CASE PRESENTATION

A 25-year-old man from the United States. He repeatedly consulted for a clinical picture of a 1-year evolution of postprandial abdominal pain and distension, nausea, vomiting, and distension, contributing to a 30 kg weight loss. In several admissions to the hospital due to intestinal obstruction –which responded to medical treatment, laboratory tests were performed to rule out infectious, autoimmune,

hematological, and neoplastic diseases. Additionally, upper and lower endoscopy, video capsule endoscopy, abdominal scan, abdominal magnetic resonance imaging (MRI), and diagnostic laparoscopy studies were performed without obtaining significant findings on a possible etiology. He received nutritional support and pharmacological treatment as part of his medical treatment. However, his symptoms did not improve.

In March 2020, he consulted our outpatient gastroenterology unit in Cali, Valle del Cauca. During anamnesis, the patient mentioned a history of infectious gastroenteritis 1 year before on a trip to San Andres, with subsequent weight loss. At admission, secondary cachexia to weight loss could be evidenced without alteration in the hemodynamic state. New endoscopic studies were performed that showed no evident alterations. While in the endoscopy recovery room, he required a transfer to the emergency department because he developed acute abdominal pain and oxygen desaturation. Within the examinations performed, the CT enterography showed dilation of the colon and small bowel loops. The sagittal reconstruction showed a decrease in the aortomesenteric angle and compression of the third portion of the duodenum and compression of the left renal vein (**Figure 1**). The upper digestive tract radiography showed a filiform passage of the contrast medium in the third portion of the duodenum toward the distal (**Figure 2**).

After confirming the diagnostic impression, enteral nutritional supplementation was started with poor response, persisting with nausea, vomiting, abdominal pain,

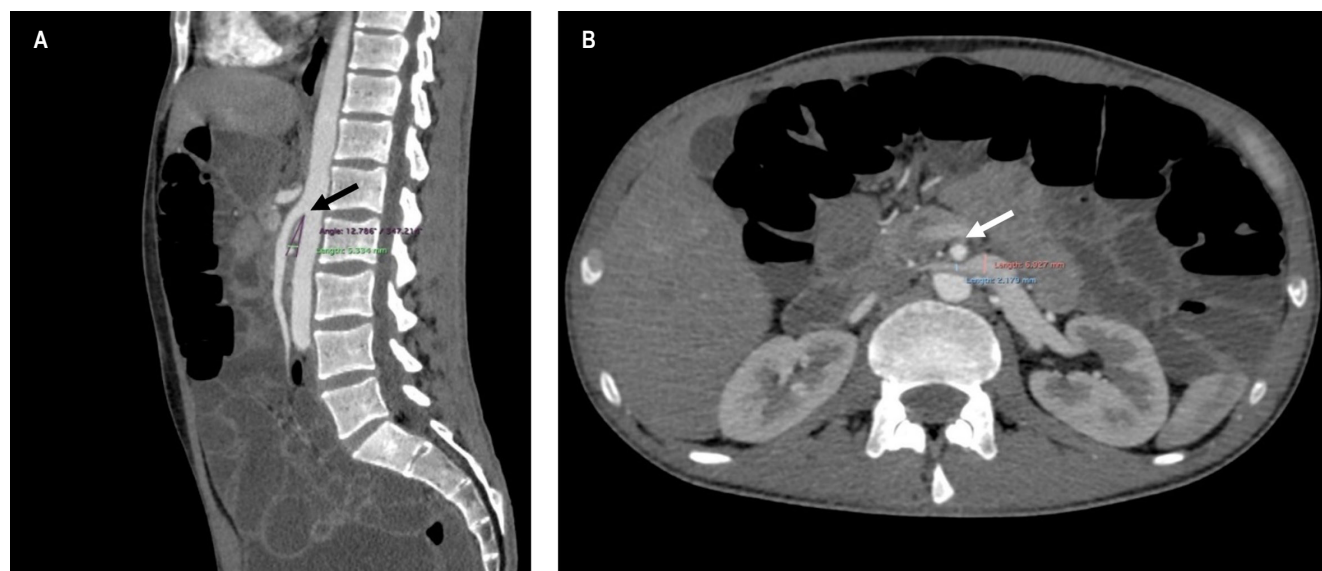


Figure 1. Abdominal CT scan. **A.** The reconstruction in the sagittal plane shows the narrowing of the aorto-mesenteric angle, 12,786°, with a reduced aorto-mesenteric length of 5334 mm (black arrow). **B.** The reconstruction in the axial plane shows the compression of the left renal vein with a ratio of the anteroposterior diameter of the compressed vein over the enlarged compressed vein (6927 mm/2179 mm = 1179) (white arrow).

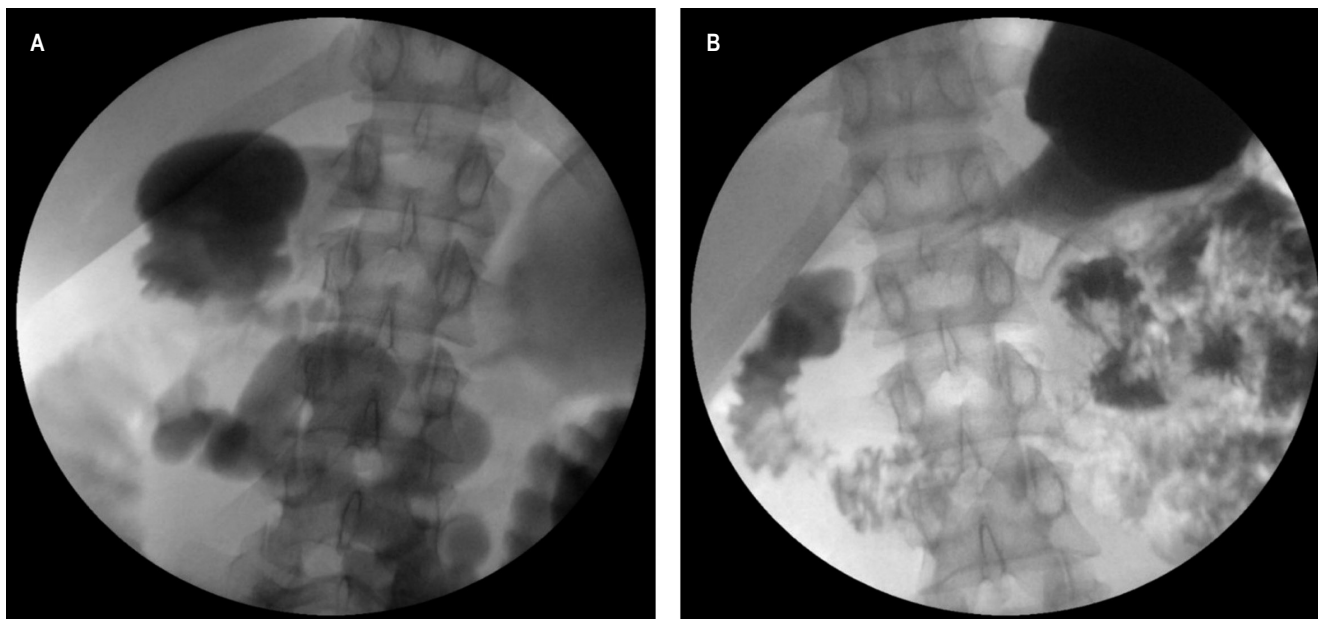


Figure 2. Gastroduodenal series. Radiographic imaging show proximal dilatation of the duodenum (A), with a significant compression in the midline of the third portion of the duodenum (B).

bloating and early fullness, and oral tolerance. The patient underwent surgery because he did not show any improvement signs. Thus, a transmesocolic duodenojejunostomy was performed 40 cm from the ligament of Treitz. There, large retroperitoneal lymph nodes found in the procedure were sampled, which in a subsequent pathological study showed reactive lymphadenopathy and follicular and sinus hyperplasia.

The patient's postoperative recovery was initially torpid, showing edema of the duodenojejunal anastomosis, which was treated with an endoscopic advancement of an enteral tube –distal to the anastomosis. Thus, the patient experienced a gradual symptom remission and gained 3 kg and progressive oral tolerance in the first month, resulting in the removal of the nasojejunal tube. As a result, the patient could return to the United States, and 9 months later, he has not reported any gastrointestinal symptoms. He is in good health condition and reported a 12 kg weight gain.

DISCUSSION

Boerneus first described the SMA in 1752 through findings in a necropsy⁽¹¹⁾. Around 1842, SMA was considered a cause of duodenal obstruction by Carl Freiherr von Rokitsky due to aorto-mesenteric compression⁽¹⁾. Regarding its etiology, Soutclern associated lordosis with duodenal stasis; Kundrat asserted that incomplete duodenum obstruction

was due to the compression of the mesentery root. In 1900, in *post-mortem* studies, Robinson found that the mesenteric vessels caused the compression of the duodenum, with dilation of its proximal portion^(1,11). It remained an unknown disease until 1927 when Wilkie reported 75 cases and would henceforth bear his name⁽¹⁾.

So far, SMA is known as a rare disease, and the bibliography corresponds to case reports. Different manifestations have been reported; however, patients typically report chronic gastrointestinal symptoms, abdominal pain, nausea, belching, excessive vomiting of bilious content or partial digestion, postprandial discomfort, and early satiety⁽¹⁻¹³⁾, as our patient showed in time. It also required treatment for multiple episodes of subacute intestinal obstruction and weight loss, characteristic of the disease as reported in the literature^(2,6,8). Studies have reported that SMA syndrome can be associated with compression of the left renal vein. When such cases show symptoms, hematuria is the most common one –not found in our patient⁽¹⁰⁻¹⁴⁾.

In the first half of the twentieth century, there were no clear diagnostic criteria, and indications for treatment were limited, so the final results were not as desired. In the 1960s, aortic angiography combined with a contrasted gastroduodenal series began to take place in an attempt to determine the obstruction site⁽¹⁰⁾. It was until the 2000s that case studies began to define imaging in patients with a suggestive clinical picture⁽¹⁻¹⁰⁾. Abdominal CT is currently considered

the gold standard for diagnosing SMA. It has a sensitivity and specificity rate close to 100%.⁽⁴⁻⁸⁾

The MSA is known to form an angle of approximately 45° with the abdominal aorta and the third portion of the duodenum^(2,9). Recent reports agree that factors that abruptly reduce the aorto-mesenteric angle to less than 25° can generate clamping of the third portion of the duodenum. This is the first diagnostic imaging criterion^(1,2,6-8). Other findings include an upper aortomesenteric distance less than or equal to 8 mm, the duodenum fixed by the ligament of Treitz, or an anatomical variant of the MSA syndrome⁽⁶⁾. The CT enterography of our reported case showed a 12.8° angle with a 5.33 mm distance –meeting these criteria (**Figure 1**).

Conservative treatment is the initial management option. Mobilization and positioning in the left lateral decubitus or the prone decubitus after meals to control postprandial symptoms, correcting hydro electrolytic alterations, and parenteral nutritional supplement focused on recovering the aortomesenteric fat pad⁽¹⁾. Previous reports have shown that the likelihood of improvement with non-surgical therapy significantly decreases after the second unresponsive week⁽¹⁻¹³⁾. Over the past year, the patient has received medical treatment for his symptoms and episodes of subacute bowel obstruction without full and lasting relief.

In 1908, Staveland performed the first successful surgery for Wilkie's syndrome at Johns Hopkins Hospital⁽¹¹⁾. Since then, several procedures have been used, including Treitz ligament division (Strong's operation), gastrojejunostomy; subtotal gastrectomy and Billroth II gastrojejunostomy; duodenojejunostomy and anterior repositioning of the duodenum⁽¹⁾. Nowadays, the preferred method is duodenojejunostomy, which in our case, resulted in a complete resolution of the symptoms and progressive weight gain⁽¹⁻¹³⁾. Over the last 10 years, progress in the surgical technique has been made, and there are successful reports of short-dura-

tion laparoscopic duodenojejunostomy without complications^(12,13).

Regarding the left renal vein compression, left renal vein transposition may be considered in cases of kidney failure, orthostatic proteinuria, persistent varicocele or hematuria, or non-response to conservative therapy. In asymptomatic cases –like our patients, conservative therapy is the first line of treatment.

CONCLUSION

Wilkie's syndrome is a low-frequency disease that should be considered a differential diagnosis in patients with weight loss and subacute bowel obstruction presenting abdominal pain, nausea, belching, and bulky vomiting. Medical imaging confirms clinical suspicion, and abdominal tomography is the gold standard. Initially, conservative therapy may be considered, but most cases will require surgical therapy with laparoscopic duodenojejunostomy, which achieves recovery rates even greater than 80%.

Ethical approval and consent to participate

No ethical approval was obtained for the publication of this clinical case, as it does not involve sharing the patient's personal data and photographs.

Publication consent

Written informed consent was obtained from the patient for publishing this case report and accompanying images. A copy of the written consent is available for review by the editor-in-chief of this journal.

Conflict of interest

The authors state that they have no competing interests.

REFERENCES

1. Welsch T, Büchler MW, Kienle P. Recalling superior mesenteric artery syndrome. *Dig Surg*. 2007;24(3):149-56. <https://doi.org/10.1159/000102097>
2. Yakan S, Caliskan C, Kaplan H, Denecli AG, Coker A. Superior mesenteric artery syndrome: a rare cause of intestinal obstruction. *Diagnosis and surgical management*. *Indian J Surg*. 2013;75(2):106-10. <https://doi.org/10.1007/s12262-012-0423-x>
3. Zaraket V, Deeb L. Wilkie's Syndrome or Superior Mesenteric Artery Syndrome: Fact or Fantasy? *Case Rep Gastroenterol*. 2015;9(2):194-9. <https://doi.org/10.1159/000431307>
4. Van Horne N, Jackson JP. Superior Mesenteric Artery Syndrome. 2022. In: *StatPearls* [Internet]. Treasure Island (FL): StatPearls Publishing; 2022.
5. Unal B, Aktaş A, Kemal G, Bilgili Y, Güllüer S, Daphan C, et al. Superior mesenteric artery syndrome: CT and ultrasonography findings. *Diagn Interv Radiol*. 2005;11(2):90-5.
6. González Hermosillo-Cornejo D, Díaz Girón-Gidi A, Vélez-Pérez FM, Lemus-Ramírez RJ, Andrade Martínez-Garza P. Síndrome de Wilkie. Reporte de un caso [Wilkie

- Syndrome. A case report]. *Cir Cir*. 2017;85(1):54-59. <https://doi.org/10.1016/j.circen.2016.12.002>
7. Agrawal GA, Johnson PT, Fishman EK. Multidetector row CT of superior mesenteric artery syndrome. *J Clin Gastroenterol*. 2007;41(1):62-5. <https://doi.org/10.1097/MCG.0b013e31802dee64>
 8. Merrett ND, Wilson RB, Cosman P, Biankin AV. Superior mesenteric artery syndrome: diagnosis and treatment strategies. *J Gastrointest Surg*. 2009;13(2):287-92. <https://doi.org/10.1007/s11605-008-0695-4>
 9. Shin J, Shin PJ, Bartolotta RJ. SMA-like syndrome with variant mesenteric venous anatomy. *Clin Imaging*. 2018;48:86-89. <https://doi.org/10.1016/j.clinimag.2017.03.013>
 10. Farina R, Iannace FA, Foti PV, Conti A, Ini C, Libra F, et al. A Case of Nutcracker Syndrome Combined with Wilkie Syndrome with Unusual Clinical Presentation. *Am J Case Rep*. 2020;21:e922715. <https://doi.org/10.12659/AJCR.922715>
 11. Delgado Alonso A, Morales Díaz I, Pita Armenteros L. Síndrome de la arteria mesentérica superior: presentación de un caso y revisión de la literatura. *Rev Cubana Cir*. 2008;47(2):1-8.
 12. Palanivelu C, Rangarajan M, Senthilkumar R, Parthasarathi R, Jani K. Laparoscopic duodenojejunostomy for superior mesenteric artery syndrome. *JSLs*. 2006;10(4):531-4.
 13. Martínez H, Martínez S, Sánchez-Ussa S, Pedraza M, Cabrera LF. Laparoscopic management for Wilkie's syndrome. *Cir Cir*. 2019;87(S1):22-27. <https://doi.org/10.24875/CIRU.18000571>
 14. Heidbreder R. Co-occurring superior mesenteric artery syndrome and nutcracker syndrome requiring Roux-en-Y duodenojejunostomy and left renal vein transposition: a case report and review of the literature. *J Med Case Rep*. 2018;12(1):214. <https://doi.org/10.1186/s13256-018-1743-7>



Available in:

<https://www.redalyc.org/articulo.oa?id=337782240008>

How to cite

Complete issue

More information about this article

Journal's webpage in redalyc.org

Scientific Information System Redalyc
Diamond Open Access scientific journal network
Non-commercial open infrastructure owned by academia

Juliana Suárez-Correa,, Wilfredo A. Rivera-Martínez,,
Karen D. González-Solarte,, Christian F. Guzmán-Valencia,,
Mauricio Zuluaga-Zuluaga,, Juan C. Valencia-Salazar.

**Nutcracker Syndrome Combined with Wilkie Syndrome:
Case Report**

**Síndrome de cascanueces acompañando un caso de
síndrome de Wilkie: a propósito de un caso**

Revista colombiana de Gastroenterología
vol. 37, no. 3, p. 306 - 310, 2022
Asociación Colombiana de Gastroenterología,
ISSN: 0120-9957
ISSN-E: 2500-7440

DOI: <https://doi.org/10.22516/25007440.797>