



Lankesteriana

ISSN: 1409-3871

ISSN: 2215-2067

Lankester Botanical Garden, University of Costa Rica

Chinchilla, Isler F.; Karremans, Adam P.; Blanco, Mario A.
A new species and a new record of *Malaxis* (Malaxidinae) from Costa Rica
Lankesteriana, vol. 22, no. 1, 2022, January-April, pp. 37-51
Lankester Botanical Garden, University of Costa Rica

DOI: <https://doi.org/10.15517/lank.v22i1.50848>

Available in: <https://www.redalyc.org/articulo.oa?id=44373444005>

- ▶ [How to cite](#)
- ▶ [Complete issue](#)
- ▶ [More information about this article](#)
- ▶ [Journal's webpage in redalyc.org](#)



Scientific Information System Redalyc

Network of Scientific Journals from Latin America and the Caribbean, Spain and Portugal

Project academic non-profit, developed under the open access initiative

A NEW SPECIES AND A NEW RECORD OF *MALAXIS* (MALAXIDINAE) FROM COSTA RICA

ISLER F. CHINCHILLA^{1,2,3,6}, ADAM P. KARREMAN^{1,4,5} & MARIO A. BLANCO^{1,3,4}

¹Jardín Botánico Lankester, Universidad de Costa Rica, P.O. Box 302–7050, Cartago, Costa Rica.

²Programa de Posgrado en Biología, Universidad de Costa Rica, Apdo. 11501–2060, San José, Costa Rica.

³Herbario Luis A. Fournier Origgi (USJ), Centro de Investigación en Biodiversidad y Ecología Tropical, Universidad de Costa Rica, Apdo. 11501–2060, San José, Costa Rica.

⁴Escuela de Biología, Universidad de Costa Rica, Apdo. 11501–2060, San José, Costa Rica.

⁵Naturalis Biodiversity Center, Endless Forms Group, Sylviusweg 72, Leiden 2333 BE, The Netherlands.

⁶Author for correspondence: isler.chinchilla@ucr.ac.cr

ABSTRACT. We describe and illustrate a new species and a new record of *Malaxis* from the lower montane and montane forests of Costa Rica. Taxonomic descriptions, illustrations, distribution maps, and conservation assessments are provided for each species. *Malaxis excentrica* sp. nov. is morphologically similar to *Malaxis simillima*, from which it can be distinguished by having a single leaf per sympodial unit, shorter, obovate, erect petals parallel to the column, the lip with triquetrous, acute, convex apical margin and the disc cavity divided by a costa. *Malaxis pittieri* is formally recorded for the flora of Costa Rica; Costa Rican specimens of this species were previously confused with *Malaxis majanthemifolia*. A lectotype for *Microstylis pittieri* is formally designated.

RESUMEN. Describimos e ilustramos una nueva especie y un nuevo registro de *Malaxis* de los bosques montano bajo y montano de Costa Rica. Se proporcionan descripciones taxonómicas, ilustraciones, mapas de distribución y evaluaciones de conservación para cada especie. *Malaxis excentrica* sp. nov. se asemeja morfológicamente a *Malaxis simillima*, de la cual se puede distinguir por tener una hoja por unidad simpodial, los pétalos más cortos, obovados, erectos, paralelos a la columna, el labelo con el margen apical triquetro, agudo, convexo y la cavidad del disco dividida por una costa. *Malaxis pittieri* se documenta formalmente para la flora de Costa Rica; anteriormente, los ejemplares costarricenses de esta especie se confundían con *Malaxis majanthemifolia*. Se designa formalmente un lectotipo para *Microstylis pittieri*.

KEYWORDS/PALABRAS CLAVE: *Malaxis acianthoides*, *Malaxis excentrica*, *Malaxis fastigiata*, *Malaxis majanthemifolia*, *Malaxis pittieri*, *Malaxis simillima*

Introduction. *Malaxis* Sol. ex Sw. (Epidendroideae: Malaxideae: Malaxidinae) in its traditional circumscription is a cosmopolitan genus comprising ca. 300 species. It has a broad pantropical distribution and few species in the temperate regions of the Americas, Asia, and Europe (Cribb 2005). However, preliminary molecular phylogenetic analyses of Malaxidinae suggest that *Malaxis* in a broad sense is polyphyletic and that the genus in the strict sense may rather be restricted to America (Cameron 2005, Radins *et al.* 2014). In the Americas, there are 143 species of *Malaxis sensu lato* currently recognized; Mexico harbors the highest species diversity with 71 published species, 45 of them endemic, followed by

Costa Rica with 22 species, six of them endemic, and then Panama with 17 species, two of them endemic (Bernet *et al.* 2021, Chinchilla 2019, Chinchilla *et al.* 2020a, Dodson 2002, Dressler 2003, 2009, Espejo Serna *et al.* 2002, Flora do Brasil 2021, González Tamayo *et al.* 2008, Ulloa Ulloa *et al.* 2018 onwards, Villaseñor 2016). Nonetheless, as detailed taxonomic studies on *Malaxis* are carried out in local and regional floras, the species richness increases in countries where the genus has previously been underestimated, such as Colombia, Ecuador, and Peru (Chinchilla 2019).

In Costa Rica, species of *Malaxis* grow at elevations from 200 to 3650 m, in tropical wet to subalpine

pluvial forests. However, the highest species diversity is found between 1000 and 2800 m in the country (Chinchilla 2019, Chinchilla *et al.* 2020a). The montane forests of the main mountain ranges of Costa Rica, especially the Talamanca mountain range, harbor the greatest diversity and endemism of *Malaxis* (Chinchilla 2019, Chinchilla *et al.* 2020a, Dressler 2003).

Despite that numerous botanical expeditions have been carried out in different locations of Costa Rica, there are still little explored areas where new or unrecorded species of orchids may be harbored (Bogarín 2011, Bogarín *et al.* 2020, Chinchilla *et al.* 2020b, Fernández *et al.* 2014, Karremans & Díaz-Morales 2016, Karremans *et al.* 2012). To update floristic inventories and contribute to the knowledge of *Malaxis*, we have carried out botanical explorations in these less explored areas to collect, document, and identify their species (Chinchilla 2019). In the Talamanca mountain range, specimens of *Malaxis* were collected that did not match any of the previously reported species in the country. The examination of herbarium specimens revealed they coincide with the Panamanian *Malaxis pittieri* (Schltr.) Ames, which is here recorded for the first time in Costa Rica. Additionally, a Costa Rican specimen of *Malaxis* kept at the United States National Herbarium (US), does not match any of the species described for the genus and is described here.

Materials and methods. This study was carried out between 2015 and 2019. It is based on collections from Costa Rica and Panama. Living plants of *M. pittieri* collected in Costa Rica were photographed using a Nikon® 7100 camera, and the herbarium specimens were deposited at JBL and USJ. Sketches of *M. pittieri* were prepared from fresh material, while sketches of *M. excentrica* were prepared using rehydrated flowers from the holotype specimen. Both were digitized and diagrammed in a composite plate using Adobe Photoshop CS6® and digitally delineated and shaded with an Apple Pencil® in Procreate application for iPad Pro® tablet (Apple Inc.). Specimens of *Malaxis* were examined in the following herbaria: AMES, CR, F, HLDG, JBL, MO, SEL, US and USJ (physically), and B, BM, BRIT, COLO, DAO, G, GH, GM, GOET, IBUG, K, L, M, NY, P, PMA, UCH and W (through digital images).

A distribution map was prepared using the QGIS 3.8 Zanzibar program (QGIS Development Team

2019), based on satellite imagery updated to 2021 from Microsoft Bing Maps, Microsoft Corporation®, Earthstar Geographics SIO, 2021© TomTom. The locations of the examined specimens were classified according to the Holdridge life zone system (Holdridge 1967). The phenology was determined from examination of herbarium specimens and their labels. The conservation status of each species was assessed according to the methodology of the International Union for Conservation of Nature (IUCN 2019). For *M. pittieri*, the Extent of Occurrence (EOO) and Area of Occupancy (AOO) were estimated based on the studied specimens using geographical data with the Geospatial Conservation Assessment Tool (GeoCAT; Royal Botanic Gardens, Kew: <http://geocat.kew.org>).

TAXONOMIC TREATMENT

Malaxis excentrica Chinchilla, Karremans & M.A. Blanco, *sp. nov.* (Fig. 1).

TYPE: Costa Rica. Puntarenas: cantón Coto Brus, distrito Sabalito, Reserva de la Biosfera de La Amistad, cerca Estación Biológica Las Alturas de Cotón, 08°57'00,3" N, 082°49'56,8" W, 2000 m, 08 julio 1994, *W. J. Kress & J. L. Tuxill 94-4775* (holotype: US!-3314101, barcode 00509021).

DIAGNOSIS: Vegetatively similar to *Malaxis simillima* (Rchb.f.) Kuntze, but differs in having one leaf (*vs.* two leaves) per sympodial unit, shorter (1.0–1.2 mm *vs.* 2.3–3.8 mm) petals that are obovate, erect, parallel to the column (*vs.* linear, recurved, surrounding the ovary), the lip with triquetrous, acute, convex (*vs.* trifid, concave) apical margin, and the disc cavity divided (*vs.* non-divided) by a costa.

A terrestrial, erect, rhizomatous *herb* 25.3 cm tall, including the inflorescence. *Roots* flexuous, short, up to 4.5 cm long × 2 mm in diameter, pubescent. *Pseudobulbs* 32 × 13 mm, epigeous, heteroblastic, conical, separated by an ascending rhizome with two internodes each subtended by one cataphyll, 6 cm long, when immature covered with leaf sheaths becoming scarious and papyraceous with age, and two ovate, obtuse, cataphylls 30–55 × 10–20 mm, the margins free or connate

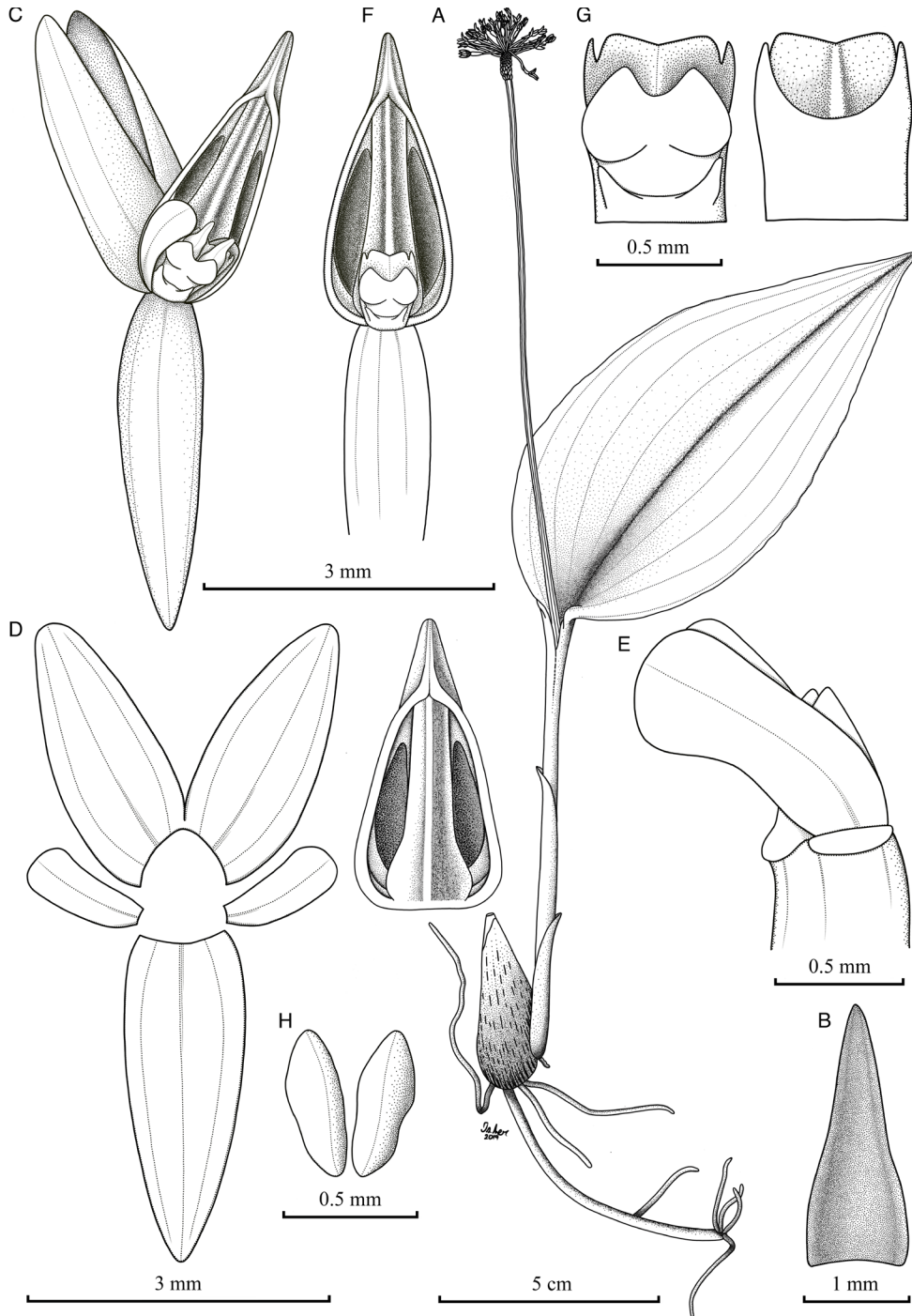


FIGURE 1. *Malaxis excentrica*. A. Habit. B. Floral bract, adaxial view. C. Flower, oblique view. D. Dissected perianth (the lip on the right), flattened. E. Apex of ovary, petals and column, lateral view. F. Ovary, lip and column. G. Column, dorsal (left) and ventral (right) views. H. Pollinia. Drawn from the holotype by Isler F. Chinchilla.

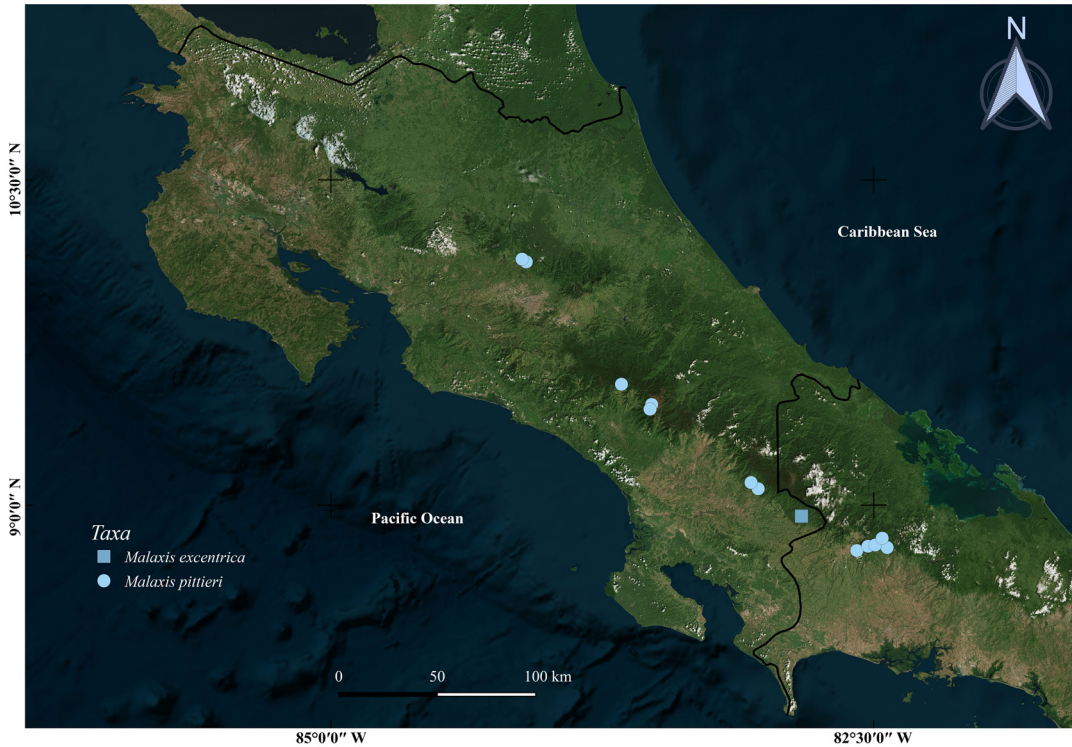


FIGURE 2. Distribution of *Malaxis excentrica* and *Malaxis pittieri*, based on the specimens examined. Satellite image source: Microsoft Bing Maps (2021). Prepared by Isler F. Chinchilla.



FIGURE 3. Flowers of *Malaxis simillima*. From left to right: front, oblique, lateral and back views (Chinchilla et al. 3183, JBL-spirit). Scale bar = 3 mm. Photographs by Isler F. Chinchilla.

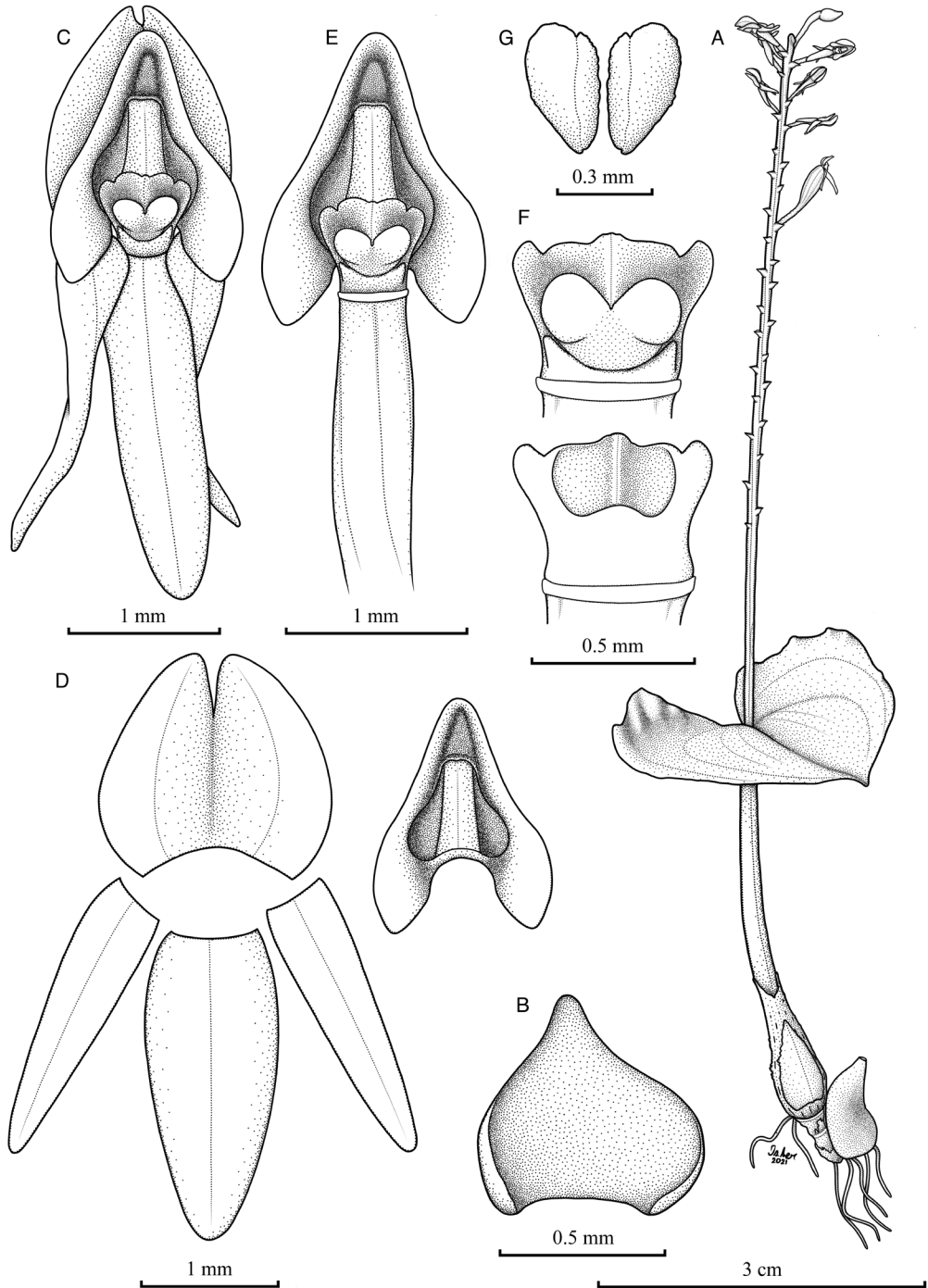


FIGURE 4. *Malaxis pittieri*. A. Habit. B. Floral bract, adaxial view. C. Flower, front view. D. Dissected perianth (the lip on the right), flattened. E. Ovary, lip and column. F. Column, dorsal (top) and ventral (bottom) views. G. Pollinia. Based on *Chinchilla* 3340 (JBL-spirit). Illustration by Isler F. Chinchilla.

up to $\frac{3}{4}$ of their length, shedding as the pseudobulb matures. *Leaves* one per sympodial unit, produced from the base of the pseudobulb, long-petiolate, conduplicate, soft-textured; sheaths with the margins connate for $\frac{3}{4}$ of their length, forming a pseudostem, 8.20 × 0.45 cm; the blade ovate, rounded, acute, the margins undulate, nine-veined, 12.2 × 6.2 cm, ascending, green. *Inflorescence* produced from the apex of the pseudobulb, erect, corymbose, 22.5 cm long; peduncle 21.0 × 0.25 cm, covered near the proximal half with leaf sheaths, seven-keeled; rachis 9.5 mm long. *Floral bracts* ovate, acute to obtuse, concave, green, 1.2–2.5 × 0.6–1.2 mm. *Pedicellate ovary* terete, inconspicuously keeled, with a 180-degree twist, 6–10 mm long. *Flowers* non-resupinate, spreading, green. *Dorsal sepal* elliptic, obtuse, convex, adpressed to the ovary, 2.7–3.5 × 1.0–1.7 mm, three-veined. *Lateral sepals* elliptic, obtuse, convex, divergent, margins recurved, 2.5–3.6 × 1.0–1.6 mm, connate at the base 0.5–0.8 mm, three-veined. *Petals* obovate, rounded, erect, lightly arcuate, parallel to the column, one-veined, 1.0–1.2 × 0.4–0.5 mm. *Lip* simple, concave, triangular, truncate, acute, papillose, fleshy, margins entire, thick, rounded, that apically converge into a triangular rim, 2.0–3.2 × 1.0–1.8 mm; the disc cavity ovate in outline, rounded, obtuse, 1.4–2.0 × 0.7–1.3 mm × 0.5–0.6 mm deep, divided by an obtuse, compressed costa, adaxially provided with a carina, subcavities narrowly elliptic, apically delimited by a semilunate emergent thickening; apical margin triquetrous, convex, porrect, acute, 0.7–0.9 mm long. *Column* 0.75–1.0 × 0.6–0.7 mm, rectangular, dorsiventrally compressed, the apex ventrally four-lobed; rostellum erect, adaxially slightly convex, emarginate; stigma obcordate, concave, longitudinally bilobed, ca. 0.4 × 0.5 mm. *Pollinia* four in two obovoid, ventrally concave hemipollinaria, 0.50–0.55 × 0.2–0.25 mm. *Fruits* unknown.

ETYMOLOGY: The specific epithet comes from the Latin *excentricus*, meaning eccentric or out from the center, in reference to the shape and position of petals, which are atypical in *Malaxis*.

DISTRIBUTION AND HABITAT: Currently known only from the type specimen collected at Las Alturas de Cotón Biological Station in Las Tablas Protective Zone, on the Pacific slope south of the Talamanca mountain

range in Costa Rica (Fig. 2). It grows in the lower montane very wet forest at 2000 m in elevation.

PHENOLOGY: The only known specimen was collected in flower in July.

Malaxis excentrica has obovate, erect petals, that are parallel to the column and barely exceed the length of the column. This unique feature distinguishes the species from all other members of the genus. Furthermore, the position of the petals is reminiscent of those of species belonging to the genus *Hippeophyllum* Schltr., another genus of the Malaxidinae endemic to Melanesia (Cribb 2005).

Due to the ascending rhizome, conical pseudobulb, ovate leaf blade, and corymbose, compact inflorescence, *M. excentrica* is similar to *M. simillima*, but the latter has up to three sympodial units with leaves that are foveate, deeply lustrous, with undulate margins, the yellowish-green to yellow flowers, the petals incurved, arcuate, the lip deeply concave, with margins thin (*vs.* thick), incurved, apically with erect, thin, diverging lateral teeth, the mid-tooth porrect, thin, flat, exceeding more than twice the length of the teeth lateral, the column robust, fleshy, the rostellum deeply emarginate and the hemipollinaria narrowly (*vs.* obovoid) claviform (Fig. 3).

The dried flowers of *Malaxis excentrica* may be confused with those of *Malaxis fastigiata* (Rchb.f.) Kuntze, a species ranging from Mexico and Guatemala. The latter can be distinguished from *M. excentrica* by the longer (*ca.* 2.5 mm), linear, recurved petals, the lip subcordate (*vs.* rounded) at the base, with disc cavity occupying up to $\frac{1}{2}$ (*vs.* more than $\frac{3}{4}$) of its length, divided by a pandurate (*vs.* obtuse) costa, and the triangular, complanate (*vs.* triquetrous, convex) apical margin.

CONSERVATION STATUS: *Malaxis excentrica* is endemic to Costa Rica, known from a single location in Las Tablas Protective Zone, Talamanca mountain range. Fortunately, the forest where it was found is conserved. Further studies on the ecology and population size of this species are required to guarantee its long-term conservation. Therefore, the species is listed as Least Concern (LC), following the IUCN (2019: section 10.4) recommendations.

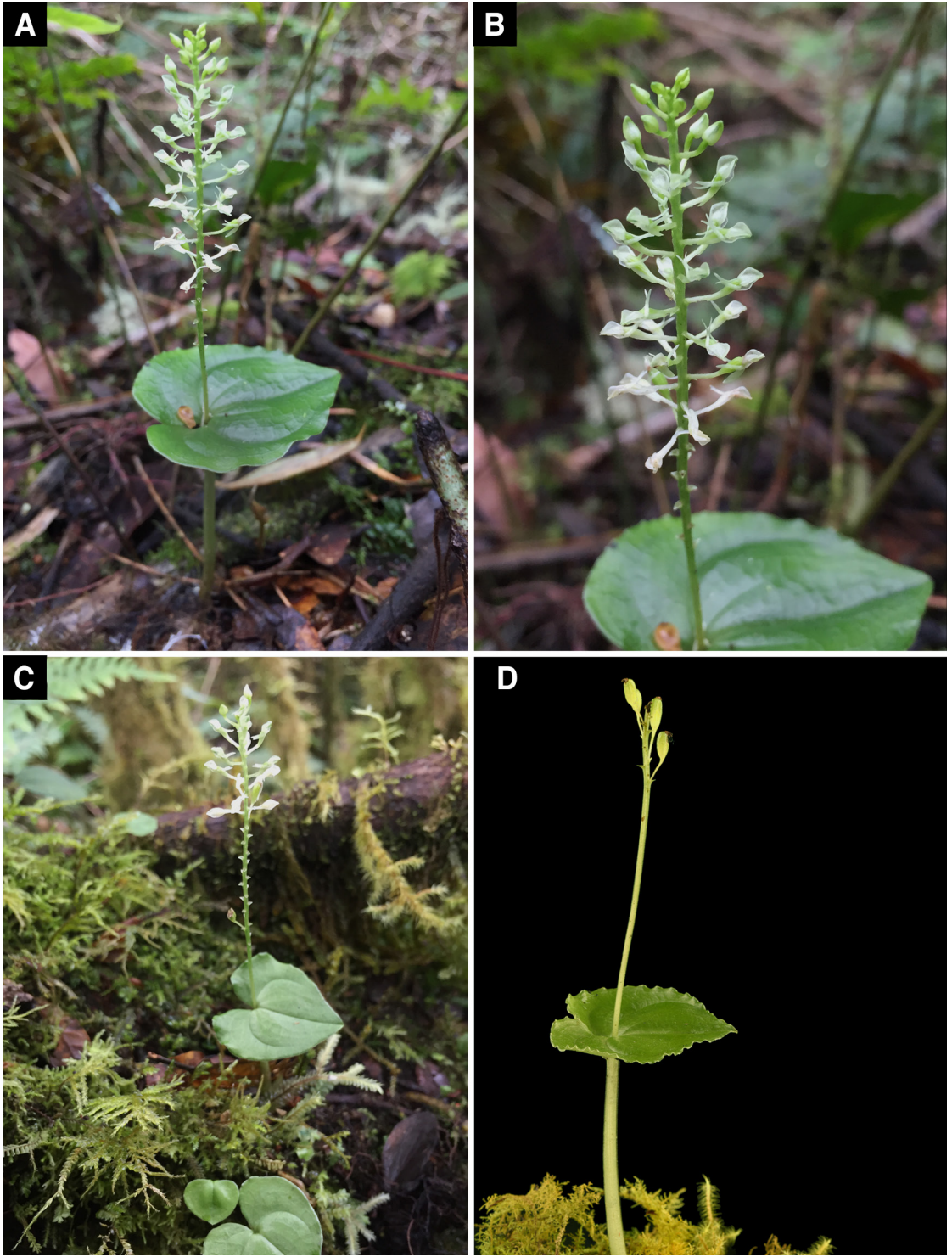


FIGURE 5. Plants of *Malaxis pittieri* in situ. **A–B.** Chinchilla 3338. **C.** Chinchilla 3340. **D.** Chinchilla 3341. All the vouchers at JBL-spirit. Photographs by Isler F. Chinchilla.

Malaxis pittieri (Schltr.) Ames, *Proc. Biol. Soc. Washington* 35: 84. 1922. (Fig. 4, 5, 6, 7). Basionym: *Microstylis pittieri* Schltr., *Repert. Spec. Nov. Regni Veg.* 12: 203. 1913.

TYPE: Panama. Chiriqui: Feuchte Wälder zwischen Alto de las Palmas und dem Gipfel des Cerro de Horqueta, 2100–2268 m ü. d. M., blühend im [11] März 1911, *H. Pittier 3277* (holotype: B, destroyed [tracing of Schlechter's floral analysis of the holotype: AMES-24153/00101736 (Fig. 8A)]; isotypes: AMES-00082841, a flower conserved in glycerine; US-677667/00093447, **designated here as lectotype** (Fig. 8B) [drawings of the lectotype: AMES-24152/00101737 (Fig. 8C)]; Schlechter's floral analysis from the holotype, reproduced in Mansfeld (1931: t. 17, no. 61; Fig. 8D).

A terrestrial or epiphytic, erect, subcaespitose to rhizomatous *herb* 4.5–20.0 cm tall, including the inflorescence. *Roots* flexuous, short, up to 3.5 cm long \times 2.0 mm in diameter, pubescent. *Pseudobulbs* 7–20 \times 3–10 mm, epigeous, heteroblastic, conical, separated by an ascending rhizome with two internodes, subtended by one cataphyll, 0.3–6.0 cm long, pale greenish, when immature, covered with leaf sheaths becoming scarious and papyraceous with age, and one greenish, ovate, obtuse cataphyll with inconspicuous tufts of hairs at the base, 12–40 \times 5–10 mm, the margins connate, shedding as the pseudobulb matures. *Leaves* one per sympodial unit, produced from the base of the pseudobulb, long-petiolate, conduplicate, soft-textured; sheaths whitish-green, four-angled, the margins connate forming a pseudostem, 3.5–9.5 \times 0.15–0.30 cm; the blade ovate, cordate-amplexicaul, acute, the margins undulate, five-seven-veined, 1.7–4.6 \times 1.8–3.8 cm, horizontal, adaxially dark green, lustrous, abaxially light green to whitish-green, dull. Inflorescence produced from the apex of the pseudobulb, erect, racemose, lax, 4–18 cm long; peduncle 3.5–13.5 \times 0.1–0.2 cm, covered up to on lower 3/4 with leaf sheaths, sometimes with a 180 degree twist, five-seven-keeled; rachis 5–65 mm long. *Floral bracts* ovate, acuminate, papillose, concave, greenish, pellucid, 0.5–1.5 \times 0.7–1.0 mm. *Pedicellate ovary* terete, inconspicuously keeled, with a 360-degree twist, 3–7 mm long, white, pellu-

cid. *Flowers* non-resupinate, spreading, lustrous, pellucid; sepals and petals white, lip white with a light to dark green stripe along the costa that extends to the apex of the lip, the column greenish with the operculum and rostellum white; becoming orangish with age. *Dorsal sepal* elliptic, obtuse, convex, adpressed to the ovary, one-veined, 2.2–2.5 \times 0.8–1.0 mm. *Lateral sepals* asymmetrically elliptic, acute to obtuse, convex, convergent, the outer margins becoming recurved as anthesis progresses, 1.8–2.3 \times 0.7–1.0 mm, the inner margins connate along 1.3–1.7 mm, one-veined. *Petals* narrowly lanceolate, obtuse to acute, margins revolute, recurved, arcuate, surrounding the ovary, one-veined, 2.0–2.3 \times 0.3–0.5 mm. *Lip* trilobed, concave, sagittate, papillose, membranaceous, margins entire, thin, 1.7–2.4 \times 1.2–1.6 mm; lateral lobes triangular, obtuse to acute, recurved, spreading, 0.5–0.8 \times 0.4–0.5 mm; midlobe triangular, 1.4–1.7 \times 0.9–1.1 mm, with the disc cavity ovate in outline, subcordate, obtuse, 0.7–1.0 \times 0.4–0.8 mm \times 0.3–0.5 mm deep, divided by a faint, compressed costa, basally wider, subcavities narrowly lanceolate, pellucid, apically delimited by a semilunate emergent thickening, shortly raised into a rounded margin; apical margin triangular, obtuse, concave, porrect, 0.4–0.6 mm long. *Column* 0.5–0.7 \times 0.5–0.7 mm, rectangular, dorsiventrally compressed, the apex ventrally four-lobed; rostellum erect, truncate, bearing two viscaria at the apex; stigma transversally oblong, subcordate, concave, longitudinally bilobed, 0.15–0.25 \times 0.35–0.40 mm. *Pollinia* four in two obovoid, ventrally concave hemipollinaria, 0.30–0.50 \times 0.15–0.30 mm. *Fruits* ellipsoid capsules, 3.0–8.0 \times 1.5–3.0 mm.

ETYMOLOGY: The specific epithet honors the Swiss botanist Dr. Henri François Pittier (1857–1950), who collected the type specimen. Pittier was one of the most influential scientists for Costa Rican botany; his work, leadership, and academic knowledge contributed to the formation of what is now the National Herbarium of Costa Rica and the development of scientific research on the flora of the country.

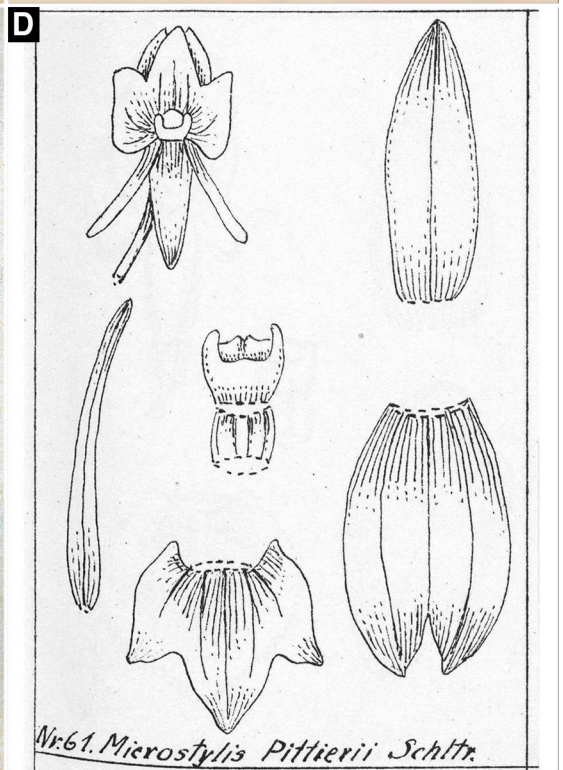
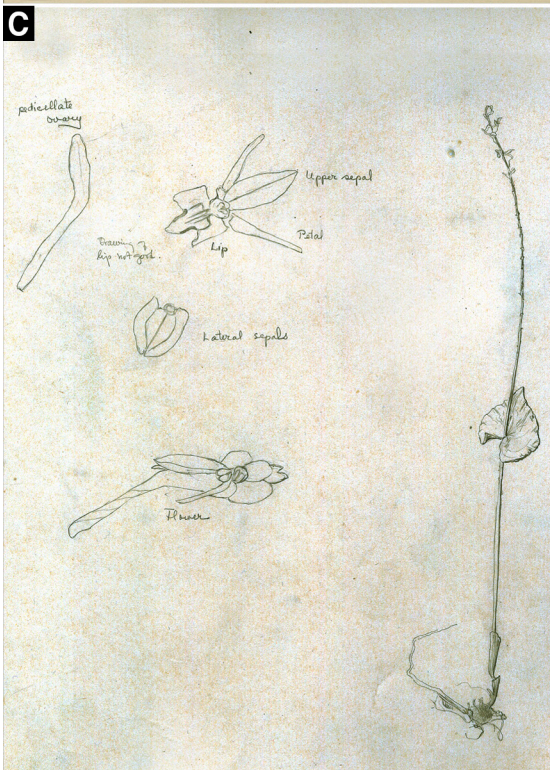
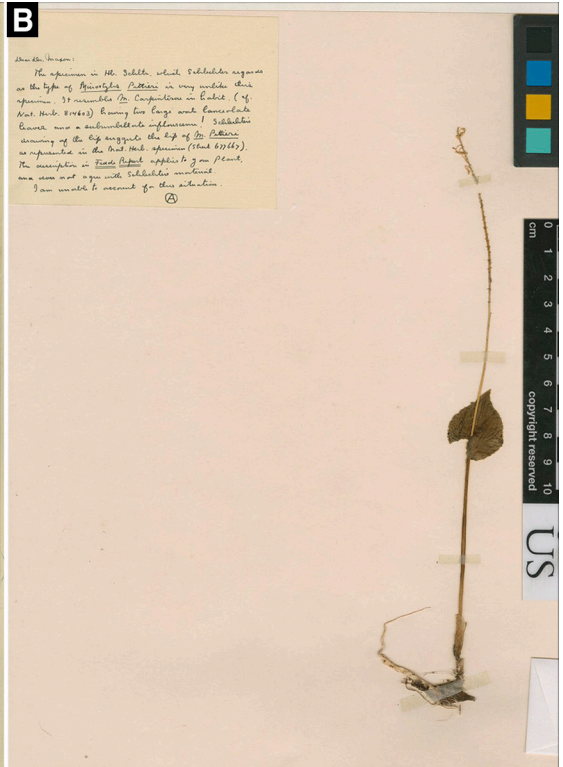
DISTRIBUTION AND HABITAT: From Costa Rica and Panama, where it grows at 1500–3036 m of elevation. *Malaxis pittieri* is recorded here for the first time for the flora of Costa Rica on the Pacific slope of the Cen-



FIGURE 6. Inflorescences of *Malaxis pittieri* bearing recently opened flowers, showing the lip with the entire apex. **A.** From Costa Rica (*Chinchilla et al.* 2341, JBL-spirit). **B.** From Panama (*Bogarín et al.* 11179, UCH). Photographs by Isler F. Chinchilla (A) and Diego Bogarín (B).



FIGURE 7. Flowers of *Malaxis pittieri*. **A–C.** From Costa Rica: **A.** A recently opened flower (*Chinchilla et al.* 2341, JBL-spirit). **B–C.** A flower in an early stage of dehydration showing the partially contracted lip (*Chinchilla* 3340, JBL-spirit). **D.** From Panama: A dehydrated flower with a contracted lip that simulates being apically trilobed (*Woodson & Schery* 474, MO). Photographs by Isler. F. Chinchilla.



tral Volcanic and Talamanca mountain ranges (García Castro *et al.* 1993 included it in an unvouchered list of orchid species common to Costa Rica and Panama, but their report must be considered speculative). In Panama, *M. pittieri* it is known from Chiriqui province (Fig. 2). It inhabits in lower montane and montane pluvial forests, in understory clearings, on very moist, mossy, and well-drained soils. It usually grows as a terrestrial, but sometimes as an epiphyte up to 1.5 m in height on moss-covered tree trunks (Fig. 5).

PHENOLOGY: Plants flower from March, June to September and bear fruits from June to August and December in the field.

OTHER SPECIMENS STUDIED: COSTA RICA. **Heredia:** Parque Nacional Braulio Carrillo, Volcán Barva Station, path and forest between park office and crater, 10°07'20" N, 84°06'00" W, 2700–2900 m, 13 Jul 1991, *H. Gay et al.* 1507 (CR); Barva, San José de la Montaña, Área de Conservación Central, Parque Nacional Braulio Carrillo, sector Volcán Barva, cerca del sendero que conduce a la laguna del Volcán Barva, aprox. 230 m de la Estación del MINAE, 10°08'05" N, 84°07'10" W, 2711 m, 15 Dic 2018, *I. Chinchilla et al.* 4031 (JBL-spirit); Braulio Carrillo Nat. Park, canton of Barva, Barva Station, in pastures around station, near stream, 10°07'20" N, 84°06'00" W, 2580 m, 10 Sep 1990, *S. Ingram et al.* 507 (CR). **Puntarenas:** Buenos Aires, Cuenca Térraba-Sierpe. Buenos Aires, Potrero Grande, Tres Colinas, ca. 800 m, bajando hacia Helechales, 09°06'16,80" N, 83°03'53,60" W, 1600 m, 14 Jun 2006, *D. Santamaría et al.* 4504 (CR); Buenos Aires, P. N. La Amistad. Cuenca Térraba-Sierpe, Sabanas Esperanza, entre 1° y 3° Sabana, 09°04'33" N, 83°01'55" W, 1600 a 1800 m, 01 Jun 2006, *J. F. Morales* 13929 (CR). **San José:** Pérez Zeledón, Albergue Cuericí, mirador trail above the Albergue Cuericí, 09°33'30" N, 83°39'42" W, 2600 m, 23 Jun 2002, *B. Boyle et al.* 6331 (USJ); [Valle del El General, San Isidro] Vale Gen. S. Isidro, Jun, *A. R. Endrés*

s.n. (W-1889–0030705); Pérez Zeledón, Rivas, Parque Nacional Chirripó, aprox. 200 m después del km 10, a la orilla del sendero, 09°26'35,30" N, 83°31'48,20" W, 3021 m, 23 Jul 2015, *I. Chinchilla et al.* 2305 (USJ); same data, *I. Chinchilla et al.* 2341 (JBL-spirit); same data, *I. Chinchilla et al.* 2342 (JBL-spirit); same locality, aprox. 300 m después del kilómetro 10, a la orilla del sendero, 09°26'33,67" N, 83°31'47,15" W, 3036 m, 13 Ago 2017, *I. Chinchilla* 3338 (JBL-spirit); same data, *I. Chinchilla* 3340 (JBL-spirit); same data, *I. Chinchilla* 3341 (JBL-spirit); [Pérez Zeledón] Fila Ventisqueros, Chirripó Gde., en el humus de la montaña alta [09°27'52" N, 83°31'21" W], 2000–3000 m, Ago 1971, *L. D. Gómez-Pignataro & W. C. Burger* 3418 (CR). PANAMA. **Chiriquí:** Boquerón, Cordillera, Paso Ancho, Aguacate, Finca Aguacatal, camino a la naciente del Río Breque, 08°47'28,6" N, 82°34'39,7" W, 2126 m, 04 Ago 2014, *D. Bogarín et al.* 11179 (UCH); Boquete, [08°48'18" N, 82°26'16" W], 5000 ft [1524 m], Jun. 27, 1938, *M. Davidson* 801 (AMES, F, US); Potrero Muleto to summit, Volcán de Chiriquí, [08°48'40" N, 82°31'35" W], 13–15 Jul 1940, *R. E. Woodson & R. Schery* 474 (MO); Vicinity of Casita Alta, Volcán de Chiriqué [08°49'01" N, 82°29'35" W], ca. 1500–2000 m, 28 Jun-02 Jul 1938, *R. E. Woodson et al.* 830 (AMES, BM, US).

Malaxis pittieri is distinguished by having a single leaf per sympodial unit with the margins of the sheaths connate, forming a pseudostem and the blade cordate-amplexicaul at the base, the inflorescence racemose, lax, bearing small, white flowers, the lateral sepals connate for more than half their length forming a galea behind the lip, and the lip trilobed, sagittate, with a green stripe along the costa that extends to the apex of the lip. Historically, it has been confused with *Malaxis majanthemifolia* Schltdl. & Cham., a species native from Mexico to Costa Rica (Fig. 9). However, *M. pittieri* differs in having white pedicels with a 360-degree twist (*vs.* greenish, not twisted), the sepals, petals, and lip white (*vs.* green to yellowish-green), the lip with a

Left: FIGURE 8. Type material of the *Microstylis pittieri*. **A.** Tracing of the original drawings of the floral analysis of the holotype of *M. pittieri* (AMES-24153 / 00101736), excluding the habit of a plant of a different species. Courtesy of the Orchid Herbarium of Oakes Ames, Harvard University Herbaria. **B.** Lectotype of *M. pittieri* (US-677667 / 00093447). Courtesy of the United States National Herbarium (US). **C.** Drawings of the lectotype of *M. pittieri* (AMES-24152 / 00101737). Courtesy of the Orchid Herbarium of Oakes Ames, Harvard University Herbaria. **D.** Schechter's drawings of the floral analysis from the holotype of *M. pittieri*, reproduced in Mansfeld (1931: t. 17, no. 61).



FIGURE 9. Plant habit (A) and inflorescence (B) of *Malaxis majanthemifolia* in situ (J. F. Morales 21193, CR). Photographs by Juan. F. Morales.

vertical green stripe (*vs.* dark brownish-green on the distal half), the disc cavity divided (*vs.* non-divided) by a costa into two subcavities, ending in a raised (*vs.* non-raised), rounded, concave (*vs.* flat) apical margin. *Malaxis pittieri* is vegetatively similar to *M. acianthoides* (Schltr.) Ames from Mexico and Guatemala, but the latter has green to yellowish-green flowers, the petals unguiculate, obliquely and transversely rhombic (*vs.* simple, narrowly lanceolate), the lip with lateral lobes of similar length to the mid lobe (*vs.* up to half the length of the midlobe), with ciliate-papillose (*vs.* entire) margins, and the disc cavity non-divided (*vs.* divided by a costa). *Malaxis cobanensis* Archila, Szlach. & Chiron, a Guatemalan endemic, is also vegetatively similar. But the latter has green sepals, petals and lip, the lip with disc cavity occupying up to $\frac{1}{3}$ (*vs.* more

than $\frac{3}{4}$) of its length, non-divided (*vs.* divided by a costa), and basally delimited by a transverse thickening (*vs.* not with a transverse thickening).

The first collection of *M. pittieri* in Costa Rica was made by the French botanist and orchidologist Auguste R. Endrés between 1866 and 1874 (*Endrés s.n.*, W-1889-0030705!; see Ossenbach *et al.* 2010). Subsequently, it has been collected multiple times in the country, but specimens have been misidentified as *M. majanthemifolia* and its presence has gone unnoticed for over 147 years. For example, the specimen cited as a Costa Rican voucher of *M. majanthemifolia* by both Pupulin (2002) and Dressler (2003) (*Ingram et al.* 507, CR) is a plant of *M. pittieri*.

Similarly, the specimens cited as a Panamanian vouchers of *M. majanthemifolia* (see Bogarín *et al.*

2014, Dressler 2009, Williams 1946) are indeed *M. pittieri*. *Malaxis majanthemifolia* to date has not been recorded in Panama.

NOMENCLATURE NOTES: Schlechter (1913) described *Malaxis pittieri* (as *Microstylis pittieri* Schltr.) with the lip trilobed at the apex as shown in the drawings of the type (Fig. 8C, D). The tracing of Schlechter's drawings of the holotype of *M. pittieri* at AMES (24153/00101736; Fig. 8A) show a floral analysis that coincides with the protologue of *M. pittieri* (and also with the original drawings of Schlechter, published posthumously by Mansfeld, 1931: t. 17, no. 61; Fig. 8D), but includes a plant habit drawing from a different species of *Malaxis*, because it has two leaves in the same sympodial unit, with opposite blades rounded at the base, and a corymbose inflorescence; inflorescence; Fig. 8A, center). This indicates a confusion with part of the type material when tracing the flower analysis and the plant habit of the holotype of *M. pittieri* in the Berlin herbarium (many of the flower analyses and plant habit of the types of orchid species that Schlechter described were traced after their publication upon Ames's request, for his own herbarium; Ames 1944). Oakes Ames, in a herbarium annotation on the specimen here designated as lectotype (US-677667/00093447, visible in the upper left corner in Fig. 8B) suggested that this drawing by the morphology of the leaves and inflorescence resembles *Microstylis carpintera* Schltr. [*Malaxis carpintera* (Schltr) Ames]. But it is impossible to determine with certainty from this drawing alone. However, *M. pittieri* consistently has one leaf cordate-amplexicaul at the base, and the lip with the entire apex (Fig. 6A–B); what happens is that when dehydrated, the lip apex undergoes a strong contraction that cleaves the apical margin, simulating a trilobed apex (Fig. 7A–D). The artifact described above was also verified with fresh material collected near the type locality of *M. pittieri* (D. Bogarín *et al.* 11179, UCH; Fig. 6B).

The isotype of the *Microstylis pittieri* designated here as the lectotype was previously indicated by Dressler (2009) as the holotype, and he also wrote it in an annotation on the specimen sheet. However, the holotype specimen that Schlechter used to describe *M. pittieri* was destroyed in 1943 in the bombing of the Berlin-Dahlem Botanical Museum (Ames 1944). In his annotation on the lectotype specimen, Ames also

indicated that there was a duplicate in Berlin, which was undoubtedly the holotype.

CONSERVATION STATUS: *Malaxis pittieri* is a native of Costa Rica and western Panama. It is known from 11 locations (six in Costa Rica, five in Panama), in the Central Volcanic (Costa Rica) and Talamanca mountain ranges (Costa Rica and Panama). Its extent of occurrence (EOO) was estimated at 3562.297 km² with an area of occupancy (AOO) of 48 km². This species is known from five protected areas: Braulio Carrillo National Park and Chirripó National Park in Costa Rica; Volcán Barú National Park in Panama; and Talamanca Range-La Amistad Reserves / La Amistad National Park in both Costa Rica and Panama. In Costa Rica, five locations are found in protected areas, and one location is also in a forest near a protected area; similarly, in Panama, four locations are in protected areas, and one location near a protected area. Therefore, the species is listed on a global level and national level as Least Concern (LC).

ACKNOWLEDGMENTS. We thank the Vicerrectoría de Investigación of the Universidad de Costa Rica by its financial support to the research project 814–C1–055 Flora Costaricensis: Taxonomía y filogenia de la subtribu Malaxidinae (Orchidaceae) en Costa Rica. To the Ministerio del Ambiente y Energía of Costa Rica (MINAE) and the Sistema Nacional de Áreas de Conservación (SINAC) for providing the scientific permits 138–16–ACLA-P and SINAC-ACC-309–2018. To the staff and curators at the CR, JBL, MO, and USJ herbaria, who allowed access to their equipment, libraries, and collections, and the staff of AMES, F, SEL, and US that loaned Mexican and Central American specimens of *Malaxis* to MO for examination by the first author. To Juan F. Morales, Diego Bogarín, and José E. Jiménez, for providing us with photographs of living plants. The first author thanks the Missouri Botanical Garden for a Shirley A. Graham Research Fellowship in Systematic Botany and Biogeography, and its researchers Barry Hammel, Michael Grayum, James Solomon, Mary Merello, Alba Arbelaez, John Pruski, Rosa Ortiz, Shirley Graham, and Alan Graham. To Carlos O. Morales for the constructive suggestions at the beginning of this investigation. We thank the editors of *Lankesteriana* and the anonymous reviewers for their constructive comments to improve the manuscript. This contribution represents part of the first author's MSc thesis, in the Programa de Posgrado en Biología of the Universidad de Costa Rica.

LITERATURE CITED

- Ames, O. (1944). Destruction of the Schlechter Herbarium by bombing. *American Orchid Society Bulletin*, 13(4), 105–106.
- Bernet, P., Kratochvil, K., Gerlach, G., Carr, G., Alrich, P., Pridgeon, A. M., Pfahl, J., Campacci, M. A., Holland Baptista, D., Tigges, H., Shaw, J., Cribb, P., George, A., Kreuz, K., & Wood, J. (2021). World Checklist of *Malaxis*. The Board of Trustees of the Royal Botanic Gardens, Kew. Retrieved from <http://www.kew.org/wcsp/> (accessed 3 March 2021).
- Bogarín, D. (2011). How many orchid species in Costa Rica? A review of the latest discoveries. *Lankesteriana*, 11(3), 185–205.
- Bogarín, D., Chinchilla, I. F. & Cedeño-Fonseca, M. (2020). Two new species of *Lepanthes* (Orchidaceae: Pleurothallidinae) from Costa Rica and their phylogenetic affinity. *Plant Systematics and Evolution*, 306, 20. Doi: <https://doi.org/10.1007/s00606-020-01653-z>
- Bogarín, D., Serracín Hernández, Z., Samudio, Z., Rincón, R. & Pupulin, F. (2014). An updated checklist of the Orchidaceae of Panama. *Lankesteriana*, 14(3), 135–364.
- Cameron, K. M. (2005). Leave it to the leaves: a molecular phylogenetic study of Malaxideae (Epidendroideae, Orchidaceae). *American Journal of Botany*, 92(6), 1025–1032. Doi: <https://doi.org/10.3732/ajb.92.6.1025>
- Chinchilla, I. F. (2019). Revisión taxonómica del género *Malaxis* (Orchidaceae: Malaxidinae) en Costa Rica. MSc thesis, Programa de Posgrado en Biología, Universidad de Costa Rica, San José, Costa Rica.
- Chinchilla, I. F., Dressler, R. L. & Pupulin, F. (2020a). *Malaxis* Sw. In: F. Pupulin & collaborators (Eds.), *Vanishing Beauty: native Costa Rica orchids*. Vol. 2. *Lacaena–Pteroglossa* (pp. 562–571). Oberreifenberg, Germany: Koeltz Botanical Books.
- Chinchilla, I. F., Aguilar, R. & Bogarín, D. (2020b). A new *Lepanthes* (Orchidaceae: Pleurothallidinae) from Península de Osa, Puntarenas, Costa Rica. *Harvard Papers in Botany*, 25(2), 215–219. Doi: <http://dx.doi.org/10.3100/hpib.v25iss2.2020.n9>
- Cribb, P. J. (2005). *Malaxis*. In: A. M. Pridgeon, P. J. Cribb, M. W. Chase & F. N. Rasmussen (Eds.), *Genera Orchidacearum*. Volume 4. *Epidendroideae (Part One)* (pp. 471–475). Oxford, New York: Oxford University Press.
- Dodson, C. H. (2002). *Native Ecuadorian orchids*. Vol. III: *Lepanthesis - Oliveriana*. Sarasota: Dodson Trust.
- Dressler, R. L. (2003). Orchidaceae. In: B. E. Hammel, M. H. Grayum, C. Herrera & N. Zamora (Eds.), *Manual de Plantas de Costa Rica*. Volumen III. *Monocotiledóneas Orchidaceae–Zingiberaceae*. *Monographs in Systematic Botany from the Missouri Botanical Garden*, 93, 1–595.
- Dressler, R. L. (2009). Orchidaceae (In part). In: G. Davidse, C. Ulloa Ulloa, H. M. Hernández Macías & S. Knapp (Eds.), *Flora Mesoamericana*, Volume 7 (2). Manuscript in preparation: First published on the Flora Mesoamericana Website, 13 July 2009; updated 11 September 2009 (pp. 1–446). Retrieved from <https://www.tropicos.org/docs/meso/orchidaceae.pdf> (Accessed on 9 November 2021).
- Espejo Serna, A., García Cruz, J., López Ferrari, A. R., Jiménez Machorro, R. & Sánchez Saldaña, L. (2002). Orquídeas del Estado de Morelos. *Orquídea (Mexico City)*, 16, 1–332.
- Fernández, M., Bogarín, D., Karremans, A. P. & Jiménez, D. (2014). New species and records of Orchidaceae from Costa Rica. III. *Lankesteriana*, 13(3), 259–282.
- Flora do Brasil 2020 (2021). *Malaxis*. Jardim Botânico do Rio de Janeiro. Retrieved from: <http://floradobrasil.jbrj.gov.br/reflora/floradobrasil/FB11814> (accessed 7 March 2021).
- García Castro, J. B., Mora de Retana, D. E. & Rivas Rossi, M. E. (1993). Lista de orquídeas comunes a Costa Rica y Panamá. *Brenesia*, 39–40, 93–107.
- González Tamayo, R., Hernández Hernández, L. & Ramírez Medina, M. E. C. (2008). Algunas novedades del género *Malaxis* (Orchidaceae) en el occidente de México. *Ibugana*, 15(1–2), 35–64.
- Holdridge L. R. (1967). *Life zone ecology*. San José: Tropical Science Center.
- IUCN. (2019). Guidelines for Using the IUCN Red List Categories and Criteria, version 14. Prepared by the Standards and Petitions Committee. Retrieved from: <http://www.iucnredlist.org/documents/RedListGuidelines.pdf> (accessed on 15 October 2021).
- Karremans, A. P., Bogarín, D., Fernández, M., Smith, C. M. & Blanco, M. A. (2012). New species and records of Orchidaceae from Costa Rica. II. *Lankesteriana*, 12(1), 19–51.
- Karremans, A. P. & Díaz-Morales, M. (2016). *Epidendra Nova Talamancana*. *Phytotaxa*, 272 (4), 248–256. Doi: <http://dx.doi.org/10.11646/phytotaxa.272.4.2>
- Mansfeld, R. (1931). Blütenanalysen neuer Orchideen von R. Schlechter. II. Mittelamerikanische Orchideen. *Repertorium Specierum Novarum Regni Vegetabilis, Beihefte*, 59, Tafs. 1–81.

- Ossenbach, C., Pupulin, F. & Jenny, R. (2010). Orchid itineraries of Augustus R. Endrés in Central America: a biographic and geographic sketch. *Lankesteriana*, 10(1), 19–47.
- Pupulin, F. (2002). Catálogo revisado y anotado de las Orchidaceae de Costa Rica. *Lankesteriana*, 2(2) [as 4], 1–88.
- QGIS development Team. (2019). QGIS Geographic Information System. Open Source Geospatial Foundation Project. Retrieved from: <http://qgis.osgeo.org> (accessed 6 August 2021).
- Radins, J. A., Salazar, G., Cabrera, L. I., Jiménez-Machorro, R. & Batista, J. A. N. (2014). A new paludicolous species of *Malaxis* (Orchidaceae) from Argentina and Uruguay. *Phytotaxa*, 175(3), 121–132. Doi: <http://dx.doi.org/10.11646/phytotaxa.175.3.1>
- Schlechter, R. (1913). *Orchidaceae novae et criticae, Decas XXXVIII. Repertorium Specierum Novarum Regni Vegetabilis Beihefte*, 12, 202–206.
- Ulloa Ulloa, C., Acevedo-Rodríguez, P., Beck, S., Belgrano, M. J., Bernal, R., Berry, P. E., Brako L., Celis, M., Davidse, G., Forzza, R. C., Gradstein, S. R., Hokche, O., León, B., León-Yáñez, S., Magill, R. E., Neill, D. A., Nee, M., Raven, P. H., Stimmel, Strong, M. T., Villaseñor Ríos, J. L., Zarucchi, J. L., Zuloaga, F. O. & Jørgensen, P. M. (2018 onwards). Vascular Plants of the Americas (VPA) website. Tropicos, Botanical Information System at the Missouri Botanical Garden, Saint Louis, Missouri. Retrieved from: <http://www.tropicos.org/Project/VPA> (accessed on 17 January 2021).
- Villaseñor, J. L. (2016). Checklist of the native vascular plants of Mexico. *Revista Mexicana de Biodiversidad*, 87(3), 559–902. Doi: <http://dx.doi.org/10.1016/j.rmb.2016.06.017>
- Williams, L. O. (1946). Orchidaceae. In: R. E. Woodson & R. W. Schery (Eds.), *Flora of Panama*. Part III. Fasc. 2. *Annals of the Missouri Botanical Garden*, 33, 1–140.

