



CT&F - Ciencia, Tecnología y Futuro

ISSN: 0122-5383

Instituto Colombiano del Petróleo (ICP) - ECOPETROL S.A.

Zhaolong, LIU; Yongzhong, ZHANG; Hualin, LIU; Zhikai, LV; Weigang, HUANG
ANALYSIS OF GAS WELL CLASSIFICATIONS AND
PRODUCTIVITY INFLUENCING FACTORS IN KELA-2 GAS FIELD
CT&F - Ciencia, Tecnología y Futuro, vol. 11, no. 2, 2021, July-December, pp. 63-70
Instituto Colombiano del Petróleo (ICP) - ECOPETROL S.A.

DOI: <https://doi.org/10.29047/01225383.382>

Available in: <https://www.redalyc.org/articulo.oa?id=46574177006>

- ▶ [How to cite](#)
- ▶ [Complete issue](#)
- ▶ [More information about this article](#)
- ▶ [Journal's webpage in redalyc.org](#)

The logo for Redalyc.org, featuring the text 'redalyc.org' in a stylized font with a red dot above the 'y'.

Scientific Information System Redalyc

Network of Scientific Journals from Latin America and the Caribbean, Spain and Portugal

Project academic non-profit, developed under the open access initiative

ARTICLE INFO

Received : June, 28, 2021

Revised : November, 9, 2021

Accepted : December, 08, 2021

CT&F - Ciencia, Tecnología y Futuro Vol 11, Num 2 December 2021, pages 63 - 70

DOI : <https://doi.org/10.29047/01225383.382>



ANALYSIS OF GAS WELL CLASSIFICATIONS AND PRODUCTIVITY INFLUENCING FACTORS IN KELA-2 GAS FIELD

ANÁLISIS DE CLASIFICACIONES DE POZOS DE GAS Y FACTORES QUE INFLUYEN EN LA PRODUCTIVIDAD EN EL CAMPO DE GAS KELA-2

Zhaolong LIU, Yongzhong ZHANG, Hualin LIU, Zhikai LV, Weigang HUANG

ABSTRACT

As one of the main gas fields in Chinese West-East Gas Transmission Project, cumulative gas production of Kela 2 Gas Field has been over 120 billion cubic meters since 2004. Each gas well has different gas production characteristics, water production, and pressure changes. Advanced water results in a serious non-homogeneous water invasion, and the actual gas production is much less than that in the development scheme. To further enhance the recovery of the Kela 2 Gas Field, productivity influencing factors of each gas pay interval are analyzed by using the production logging data based on geological characteristics. According to the change of the main gas pay and water production from production logging, gas wells are divided into four types, and three water invasion patterns in Kela 2 Gas Field. The causes of gas production changes and water production regime are analyzed for each type first, and then the main productivity influencing factors in gas wells are determined. The outcome shows that pressure drop, water breakthrough of gas pay layers, and different reservoir properties are the main productivity influencing factors. Through gas well classification of the Kela 2 Gas Field, the productivity influencing factors and productivity change regime are determined, which could provide grounds for further enhancing the recovery of the Kela 2 Gas Field.

RESUMEN

Como uno de los principales campos de gas del Proyecto de Transmisión de Gas Oeste-Este de China, la producción acumulada de gas del campo de gas Kela 2 ha superado los 120 mil millones de metros cúbicos desde 2004. Cada pozo de gas muestra diferentes características de producción en la producción de gas, producción de agua y cambio de presión. El avance del agua por adelantado da como resultado una grave invasión de agua no homogénea, y la producción real de gas es mucho menor que la del plan de desarrollo. Para mejorar aún más la recuperación del campo de gas Kela 2, los factores que influyen en la productividad de cada intervalo productivo de gas se analizan utilizando los datos de registro de producción basados en las características geológicas de desarrollo. De acuerdo con el cambio de la producción principal de gas y agua a partir del registro de producción, los pozos de gas se dividen en cuatro tipos y tres patrones de invasión de agua en el campo de gas Kela 2. Las causas del cambio en la producción de gas y la ley de producción de agua se analizan primero para cada tipo y luego se determinan los principales factores que influyen en la productividad de los pozos de gas. Los resultados indican que la caída de presión, la penetración de agua en la capa productiva de gas y las diferentes propiedades del yacimiento son los principales factores que influyen en la productividad. A través de la clasificación de pozos de gas del campo de gas Kela 2, se determinan los factores que influyen en la productividad y la ley de cambio de productividad, lo que podría proporcionar una base para mejorar aún más la recuperación del campo de gas Kela 2.

KEYWORDS / PALABRAS CLAVE

Kela-2 gas field | Production logging | Gas production profile | Gas well classification | Productivity influencing factors | Water invasion pattern
Campo de gas Kela-2 | Registro de producción | Perfil de producción de gas | Clasificación de pozos de gas | Factores que influyen en la productividad | Patrón de invasión de agua.

AFFILIATION

PetroChina Research Institute of Petroleum Exploration & Development, Beijing, China
*email: liuzhaol69@petrochina.com.cn

1. INTRODUCTION

In the face of a paradigm change in the political and social framework As the first large gas field with an annual gas production above 10 billion cubic meters in China, the Kela-2 gas field is a milestone in the natural gas development process in China [1]-[3]. In 1998, Well Kela-2 successfully drilled into the target layer, and obtained high-yield industrial gas flow, which not only marked the successful discovery of the Kela-2 gas field, but also opened the prospect of subsequent exploration and development of a series of gas fields in foreland of the Kuqa Mountain [4]-[5]. In late 2020, the cumulative gas production of the Kela-2 gas field has exceeded 120 billion cubic meters, making it the largest natural gas production single gas field in the Tarim Oilfield. Problems of the Kela-2 gas field were evidenced during its development in the past 20 years, and some gas wells have experienced water flooding, resulting in rapid productivity decrease. It is generally thought that the reduction of formation pressure, and the increased geostress sensitivity are the main factors for the decline of gas well productivity [6]-[7], while the fracture development degree, fracture opening, and fracture orientation of the main seepage are the main controlling factors affecting the productivity of a gas well [8], and the geostress field distribution controls the development of fractures. Therefore, the geostress field distribution, and its relationship with the occurrence of natural fractures are the key factors that affect gas field productivity [9]-[10]. For analyzing factors that affect the productivity of gas wells, the whole section analysis method is commonly used, and the productivity is not assessed by gas pay interval. Gas wells show various production characteristics in the different structural locations. Production logging is used to monitor gas and water production changes every year in the Kela 2 Gas Field. Combined with the main gas pay intervals, change regime, and water production characteristics, the gas wells of the Kela 2 Gas Fields are classified to study the main productivity influencing factors. A specific development scheme is proposed for each well type as the basis for the development plan scheme adjustment, and oil recovery improvement of the Kela-2 gas field.

2. GEOLOGICAL BACKGROUND OF THE KELA-2 GAS FIELD DEVELOPMENT

The Kela-2 gas field is situated on the Kelasu structural belt of the Tarim Basin. Under the thrust of South Tianshan orogenic belt, the foreland basin structure is formed by mountains in the North and basin in the South, and the sedimentary facies are dominated by alluvial fans, fan deltas, and braided river deltas. The reservoirs are the Paleogene dolomite formation ($E_{1-2}km_3$), Kumgeliemu Group dolomite formation ($E_{1-2}km_4$), glutenite formation ($E_{1-2}km_5$), and Cretaceous Bashijiqike thick sandstone Formation (K_1bs). The main reservoir is the Cretaceous Bashijiqike formation (K_1bs), which contains 5 sections: $K_1bs_2^3$, $K_1bs_2^2$, $K_1bs_2^1$, $K_1bs_1^2$, $K_1bs_1^1$ from bottom to top. Average porosity is 12.4%, and average permeability is $49.4 \times 10^{-3} \mu m^2$, belonging to medium -porosity and medium-high permeability to low-porosity and medium-low permeability reservoirs, which have better reservoir physical properties than the Keshen and Dabei gas fields [11]-[15]. The buried depth of the reservoir is 3500m-4100 m, the original formation pressure is 74.35Mpa, the formation pressure coefficient is 2.02, and the original formation temperature is 100°C. It belongs to a normal

temperature, abnormally high-pressure block edge-bottom water dry gas reservoir.

The study of the single-well reservoir physical properties in the Kela-2 gas field, determines that the permeability of calcareous cemented sandstone and argillaceous sandstone is generally less than $0.1 \times 10^{-3} \mu m^2$, while the permeability of medium-fine sandstone, with weak cementation and strong dissolution, can reach more than $1000 \times 10^{-3} \mu m^2$, showing strong heterogeneity. The physical properties of the reservoir in the East are better than those in the West in the plane, and the middle of the reservoir (the second member of the Bashijiqike Formation) has the best physical property in vertical direction, which is the main gas pay section. A series of high permeability belts are developed within the reservoir, with a total thickness of 671.7 m, accounting for 13.5% of the effective reservoir thickness. High permeability belts can provide favorable conditions for reservoir connectivity and gas migration, on the one hand, and on the other hand, they provide channels for edge water breakthrough, resulting in rapid invasion of formation water into gas reservoirs along the belts. The southern part of the Kela-2 is blocked by large faults, and the northern water body is relatively small. The water invasion of the gas reservoir comes mostly from the huge water body in the East and West.

There are 27 wells in the Kela-2 gas field, and 23 wells are currently active, with a daily gas production of $1788 \times 10^4 m^3/D$, a daily water production of 333 t/D, a gas production rate of 2.6%, and a geological reserve gas recovery of 42.3%. The formation pressure measured in March 2020 was 39 MPa, the pressure decrease was 2.1 MPa/year, and the gas production per unit pressure decrease was 4 billion m^3/MPa . The formation pressure of each well has decreased simultaneously, suggesting a good connectivity a large. Affected by formation water, the formation pressure in the East and West of the gas reservoir is slightly higher than that in the middle section. The formation pressure in the East is higher than that in the West, which means that the water body in the East is larger than that in the West.

3. CLASSIFICATION OF GAS PRODUCTION PROFILE IN THE KELA-2 GAS FIELD

The gas production profile is classified and studied from the variation of multi-layer gas production (water production) of a single well to the variations of a single gas production (water production) layer; the reasons for the variation of gas reservoirs in each type of gas production profiles are analyzed, and the main controlling factors of gas production variations are determined, providing guidance for reasonable production allocation of single wells, development scheme adjustments, and engineering transformation measures. As one of the most used and direct dynamic monitoring techniques in oil fields, gas production profile logging can better monitor dynamic parameters such as downhole stratified gas production, water production, and pressure changes [16]-[19]. It includes mainly gas production, contribution rate of gas production, and gas production intensity [20-21]. By analyzing gas and water production from gas production profile test every year, it is possible to determine the uplift height of the gas-water contact, water invasion characteristics, and change of production performance parameters [22]-[23]. The downhole production logging tool was used in the Kela-2 gas field, which mainly conducted stratification tests in the perforation zone for seven logging series of natural gamma, magnetic positioning,

pressure, temperature, water holdup, tuning fork density, and turbine flow. The test data were processed and interpreted, and a single gas -phase or gas-water-phase flow model was established by analyzing fluid density, water holdup, temperature, and pressure curves, to calculate production and production properties of each gas pay [24]-[26].

A total of 86 gas production profile tests have been conducted in 14 wells in the Kela-2 gas field since 2009, obtaining abundant production performance data, which are the grounds for gas reservoir performance analysis. The single well is divided into four types (Table 1) according to whether water production existed in gas wells, and whether the main gas pay changes. Among these, there are 6 wells with the main gas pay changes caused by water production, accounting for 42.9% of the wells tested.

Table 1. Classification of gas production profiles in the Kela-2 gas field

Types	Water Production	Main gas pay changes	Wells	Percentage
I	Yes	Yes	6	42.9%
II		No	1	7.1%
III	No	Yes	4	28.6%
IV		No (less than 2 gas production profile tests)	3	21.4%

ANALYSIS OF CAUSES FOR THE CHANGES IN THE MAIN GAS PAY OF TYPE I WATER-PRODUCING WELLS

According to the characteristics of water production, the type I wells (main gas pay changed with water production) can be further divided into two types: a. vertical channeling-lateral invasion type, where the edge water (or bottom water) first invaded vertically along the

fault to the upper strata, and then invaded the gas well laterally; b. edge water lateral invasion type, edge water invades the gas well along the high permeability belts.

A. VERTICAL CHANNELING-LATERAL INVASION TYPE

There are 3 vertical channeling-lateral invasion gas wells (KL2-14, KL203, KL2-13), accounting for 50% of type I wells, which are concentrated in the western part of the gas reservoir and close to the edge water of the gas reservoir. The faults developed around the well have a long longitudinal extension, and the lower part of the fault is located under the gas-water interface, with relatively large fault throw, breaking the barrier layer that can block the bottom water, and high permeability belts and fractures are developed locally.

Using well KL2-14 as an example, the well is in the West of the gas reservoir. A total of 10 gas production profile tests were conducted between 2009 and 2016. In 2012, the main gas pays changed from segment 3820m-3826m of K_{1bs_2} to segment 3712m-3716m of $E_{1_2}k_{m_5}$. Well KL2-14 has a perforation avoidance height of 172m, and the bottom of the perforation is 726m away from the water in the southwest. The rapid increase in water-gas ratio in 2009 confirmed that the gas well produced water. There are many third-class faults developed around the well, and all extend below the gas-water interface, providing a channel for the rapid coning of bottom water (Figure 1). It can be seen from the single-well logging histogram that high-permeability belts and fractures are developed in the original main gas pay segment of 3820m-3826m (Figure 2). With the decrease of the internal pressure of the gas reservoir, the bottom water first enters the reservoir near the wellbore vertically along the fault, and then enters the gas well along the high permeability belts and fractures, resulting in the water production of the main gas reservoir and the decrease of gas productivity.

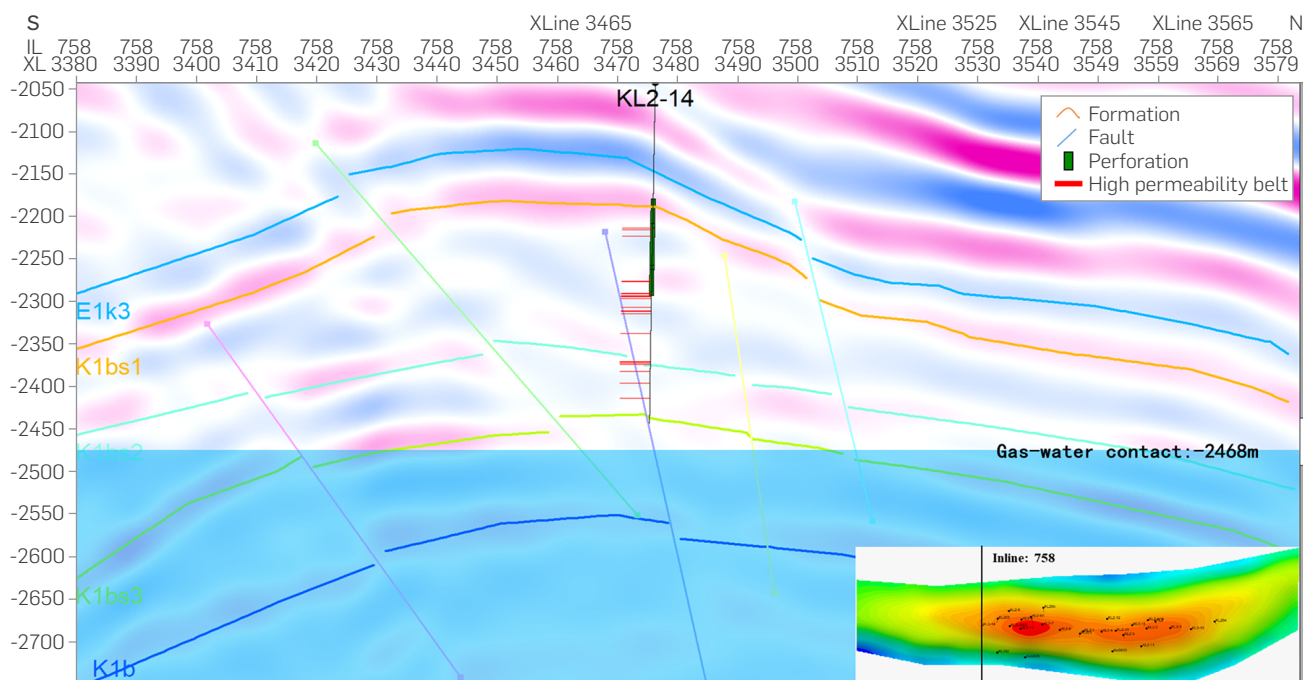


Figure 1. The North-South seismic profile of well KL2-14 (Inline 758)

B. EDGE WATER LATERAL INVASION TYPE

There are 3 edge water lateral invasion gas wells (KL2-12, KL2-8, KL2-1), accounting for 50% of type I wells, distributed in the East, North, and West of the gas reservoir, which is farther away from the edge water and closer to the middle of the gas reservoir than the vertical channeling-lateral invasion type. Faults are small or underdeveloped around the well, and high-permeability belts and fractures are developed locally.

Using Well KL2-12 as an example, this well is in the North of the gas reservoir. A total of 12 gas production profile tests were conducted between 2009 and 2019. In 2012, the main gas pays changed significantly from segment 3824m-3829.5m of $K_{1bs_2}^1$ to segment 3,788.4m-3,796m of $K_{1bs_2}^2$. In 2012, three gas production profile tests were conducted at the wellhead productivity of 450,000 m^3/D , 700,000 m^3/D , and 1.1 million m^3/D (Table 2). Except for the contribution rate of gas production of tested layers 1, 3, and 7, which decreases with the increase of wellhead productivity, the gas production of other layers all increase as wellhead productivity increases. The change of the production contribution rate is mainly controlled by the formation pressure and the physical properties of the reservoir. The gas pay with good reservoir physical properties reflects the characteristics where the production contribution rate greatly varies with the change of wellhead productivity.

The bottom of the perforation in Well KL2-12 is close to the bottom water, with a perforation avoidance height of 102m, and the distance between the perforating bottom and the northern edge water is

355m. Compared to the real formation water chloride content value below 1000mg/L, the rise of 50,000 mg/L confirmed that the gas well produced water in October 2010. A small number of small-scale faults are developed around the well KL2-12 with small scale (Figure 3). High permeability belts and fractures are developed in the original main gas pay of 3824m-3829.5m. The gas productivity is high before water breakthrough, with an average gas production of 354,663 m^3/D from 2009 to 2011. As the development progresses, the pressure of the gas well decreases, and the edge water invades into the gas well rapidly along the high permeability belts and fractures, resulting in the rapid decrease of main gas pay productivity and water production in 2012.

CAUSE ANALYSIS FOR THE UNCHANGED MAIN GAS PAY OF TYPE II WATER-PRODUCING WELLS

There is only one type II gas well- KL2-10, which is in the East of the gas reservoir. There are no faults around the well, and fractures and high-permeability belts are well developed. A total of 14 gas production profile tests have been conducted in Well KL2-10. The main gas pay is 3641m-3653m interval of $E_{1-2} km_5$, with a contribution rate of gas production of 55.1%-98.3% over the years (Figure 4). The gas production of the main gas pays since 2012 has decreased year by year.

Well KL2-10 is less than 3km away from the eastern water body, with a perforation avoidance height of 170m. Dynamic monitoring in

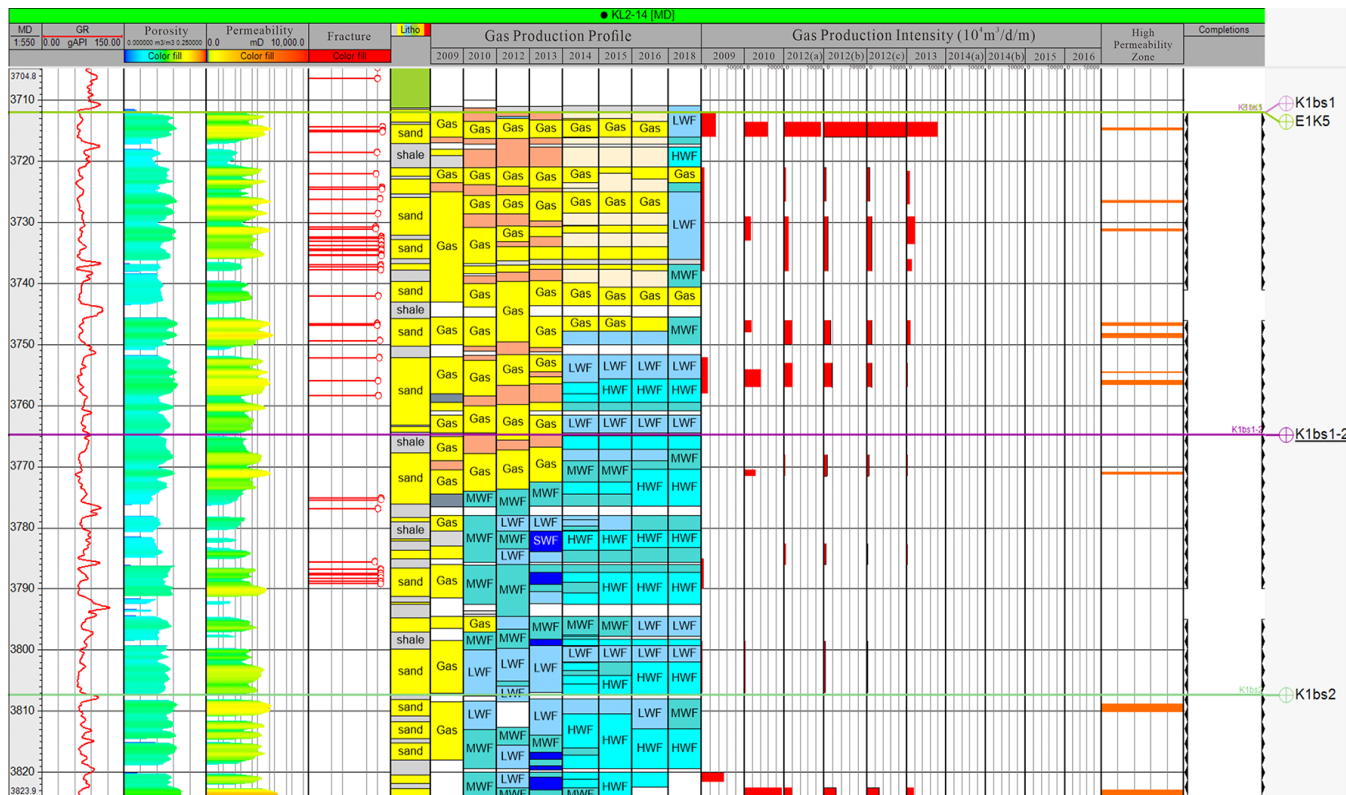


Figure 2. Synthesis histogram of well KL2-14

Table 2. Contribution rate of gas production for well KL2-12 in 2012

Types	Depth (m)	2012.8.27 (450,000 m ³ /D)	2012.8.28 (700,000 m ³ /D)	2012.8.29 (1.1 million m ³ /D)	Porosity (%)	Permeability ($\times 10^{-3} \mu\text{m}^2$)
1	3737.5-3743.5	10.7%	6.8%	6.7%	14.0	8.5
2	3748.5-3750	0.0%	0.0%	3.4%	8.7	0.4
3	3757-3765	20.2%	13.8%	10.2%	8.8	12.9
4	3774-3785.5	10.3%	21.7%	9.3%	13.3	9.9
5	3786-3798	26.3%	29.7%	20.4%	15.3	21.1
6	3807-3812	0.0%	0.0%	9.6%	13.6	9.5
7	3813-3823.2	32.2%	27.1%	15.5%	13.7	24.7
8	3824-3829.5	0.3%	0.9%	25.1%	18.3	187.2

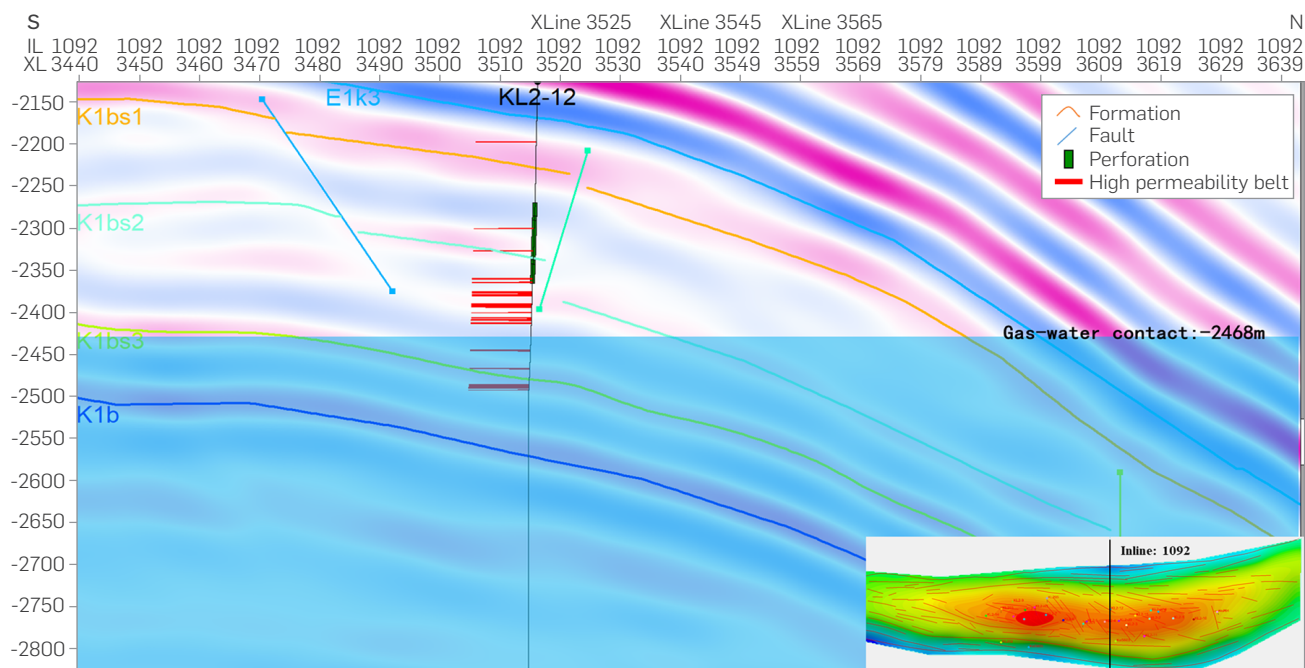


Figure 3. The North-South seismic profile of Well KL2-12 (Inline 1092)

2015 confirmed that the gas well produced water. The reason for water production in Well KL2-10 is basically the same as that in Well KL2-12, the edge water invades the gas well along the high-permeability belts and fractures. However, unlike well KL2-12, the main gas pay of this well has not changed, which may be due to the higher perforation segment (the perforation bottom is in K_{1bs_2}), and the physical properties of $E_{1-2}km_5$ are better than that of K_{1bs_1} . If the perforating operation is carried out on K_{1bs_2} and the gas production profile test is conducted, it may be inferred that the main gas pay will be in the K_{1bs_2} before water breakthrough, and move up to the current main gas pay after the water production.

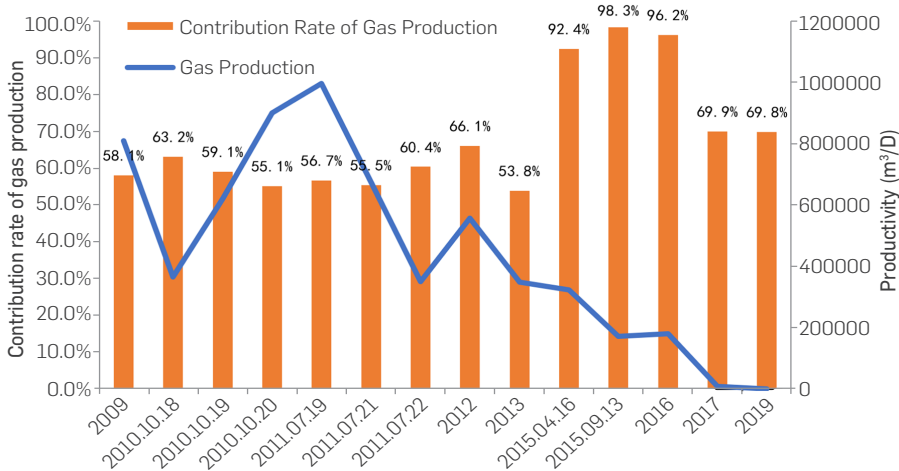


Figure 4. Gas production profile test of well KL2-10 in 3641m-3653m

CAUSE ANALYSIS FOR THE CHANGED MAIN GAS PAY OF TYPE III NON-WATER-PRODUCING WELLS

There are 4 type III gas wells (KL2-3, KL2-5, KL2-9, KL2-11), in the middle of the gas reservoir with high perforation avoidance height (141m-191m). There are small-scale faults developed or underdeveloped, the fractures are generally developed, and the high-permeability belts are well developed around the well.

Using well KL2-11 as an example, a total of 4 gas production profile tests have been conducted in this well. In 2010, the main gas pays changed from segment 3730m-374F1m of $K_1bs_2^2$ to segment 3640m-3644.5m of $E_{1-2}km_5$. Research on saturation test data shows that the gas-water interface of well KL2-11 is rising at a rate of 10.4 m/year, and is currently 37.4m away from the bottom of the perforation without water production. As the development progresses, wellbore pressure decreases, and the gas seepage velocity along reservoirs with better physical properties is higher than that with poor physical properties. Therefore, pressure changes and physical property differences are the main reasons for the changes in the main gas pay.

(Figure 5). After the water invasion of the gas reservoir, the main and the secondary gas reservoirs are interchanged, and the main gas pay changed from $K_1bs_2^1$ to $E_{1-2}km_5$. As the development progresses, the pressure of gas well drops, and the formation water rapidly enters the gas reservoir along faults, high permeability belts and fractures, forming non-uniform water invasion. Therefore, the water invasion of gas reservoir is the main reason for the gas pay change in the Kela-2 gas field, and the water flooding of gas pay will lead to the rapid decrease of gas productivity or even no gas production.

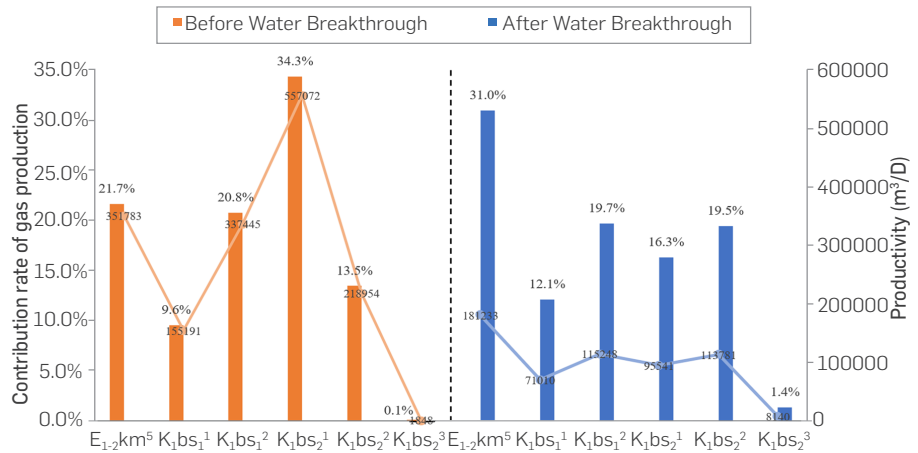


Figure 5. Average single well gas production before and after water breakthrough

CAUSE ANALYSIS FOR THE UNCHANGED MAIN GAS PAY OF THE TYPE IV NON-WATER-PRODUCING WELLS

There are 3 type IV gas wells (KL2-6, KL2-7, KL2-15), which are mainly distributed in the higher part of the gas reservoir. Since the gas production profile tests were conducted less than twice, the data are not enough for the analysis. It will be studied once new data are added in the future.

Both high permeability belts, fractures and faults can be water invasion channels in gas reservoirs. The combined action of these three factors leads to rapid invasion of formation water into gas wells, resulting in non-uniform water invasion of the Kela-2 gas reservoir. Based on the classification of gas wells, the water invasion models of the Kela-2 gas field are summarized in the following three types (Figure 6):

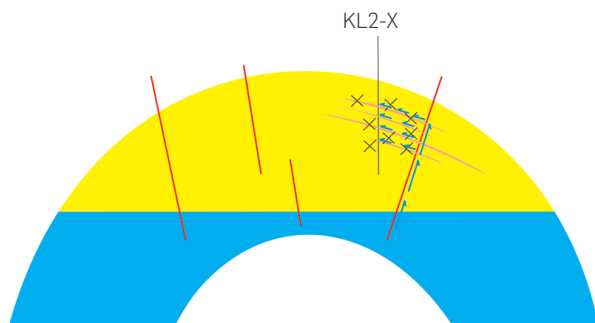
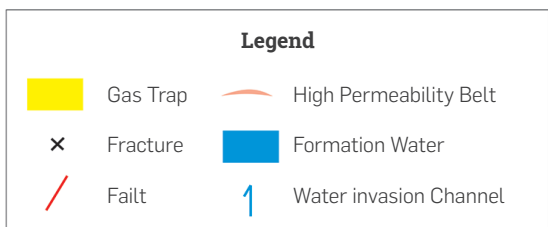
4. ANALYSIS OF FACTORS AFFECTING PRODUCTIVITY

To study the variation of gas pays in the Kela-2 gas reservoir, the data of gas producing profile in each layer are counted and the average gas production of single well is calculated (Table 3). Before the water invasion of the gas reservoir, the main gas pay is $K_1bs_2^1$ with a gas production contribution rate of 34.3%, the secondary gas pay is $E_{1-2}km_5$ with a gas production contribution rate of 21.7%

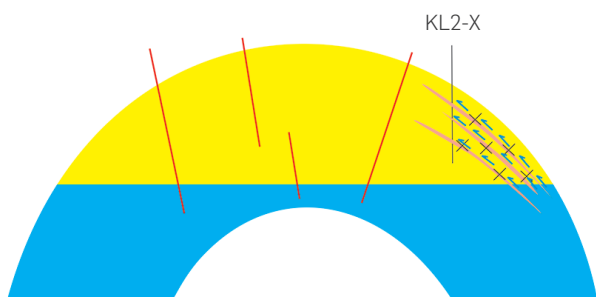
a. Edge water vertical channeling-lateral invasion mode: Gas wells are mainly distributed in the West of the Kela-2 gas reservoir, with faults and fractures developed around the wells, and the faults extend vertically below the gas-water interface and connect with the gas reservoir's edge water (bottom water). With the development, the well bottom pressure decreases, and the edge water (bottom water) flows to the pressure-decreased area, while faults, fractures and high permeability belts provide a channel for rapid water invasion of formation water. The edge water (bottom water) first invades vertically along the faults to the vicinity of the gas well, and then laterally invade the gas well under the combined action of high permeability belts and fractures, resulting in the water production of the gas well and the decrease of gas productivity.

Table 3. Statistics of gas production profile stratification in the Kela-2 gas field

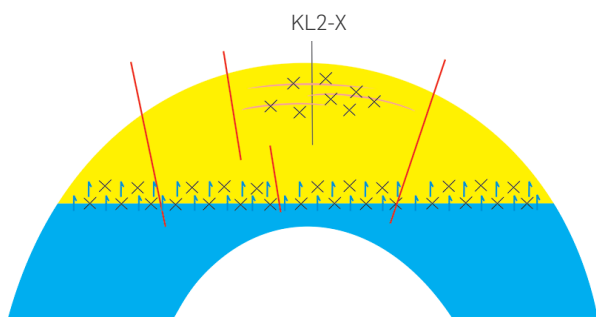
	KL2-14	KL203	KL2-9	KL2-8	KL2-13	KL2-6	KL2-5	KL2-12	KL2-3	KL2-11	KL2-1	KL2-10	Average gas production (m³/D)
$E_{1-2}km_5$	/	/	/	/	/	49510	263646	/	249416	553902	351909	445767	319025
$K_1bs_1^1$	169135	9111	18030	/	/	547646	99017	73484	35991	272858	112838	57240	139535
$K_1bs_1^2$	14569	159107	66358	27292	/	840525	178521	256821	327206	364122	323287	242472	254571
$K_1bs_2^1$	51798	2717	311133	244180	363576	1284789	448996	86902	660602	/	533746	/	401290
$K_1bs_2^2$	/	89399	/	218954	138163	/	/	/	/	/	/	/	148839
$K_1bs_2^3$	/	/	/	462	8140	/	/	/	/	/	/	/	4301



(a)



(b)



(c)

Figure 6. Water invasion patterns of the Kela-2 gas field (a) Edge water vertical channeling-lateral invasion mode (b) Edge water lateral invasion mode (c). Bottom water coning mode)

b. Edge water lateral invasion mode: Gas wells are mainly distributed in the East and North of the Kela-2 gas reservoir. Compared with the gas wells of vertical channeling-lateral invasion mode, this type of gas wells is closer to the edge of the gas reservoir, and the perforation avoidance height is lower (less than 200m). Fractures and high-permeability belts around the well are well developed, and they work together to form a favorable channel for water invasion. Among them, the high-permeability belts are developed on a larger scale, connecting the wellbore and the bottom water. As the development progresses, the pressure inside the gas well drops, and the water flows along the high permeability belts and fractures to the pressure-decreased area, resulting in the decrease of water production and gas productivity.

c. Bottom water coning mode: The gas wells are mainly distributed in the middle of the Kela-2 gas reservoir, with higher structural positions and high perforation avoidance height. The faults, fractures, and high-permeability belts around the well are relatively small or underdeveloped, and there is no favorable channel for water invasion. With the decrease of gas reservoir pressure and the overall uplift of bottom water, there is no water breakthrough in any gas wells of this type.

CONCLUSIONS

For a gas reservoir with serious inhomogeneous water invasion, complex gas and water production change, complex pressure change, and irregular productivity analysis, production logging can be used to analyze the productivity by subdividing the gas pay intervals to determine the gas well classification standard, to finally study the influencing factors of gas well productivity.

By analyzing productivity influencing factors for each subdivided gas pay interval, gas wells are divided into four types and three water invasion patterns in Kela 2 Gas Field. Pressure change, water breakthrough and different reservoir properties are the three main influencing factors that cause the gas pay interval change. Pressure drops in the gas well could cause the water to quickly invade the reservoir along faults, high permeability zones and fractures, leading to non-homogeneous water invasion. Water flooding of gas pay intervals could result in a rapid gas production decrease or even no gas production.

The combination of high-permeability belts, fractures, and faults can provide a favorable channel for water invasion. Gas wells of vertical channeling-lateral water invasion and edge water lateral invasion types occur with relatively earlier water breakthroughs, and production declines quickly after water breakthroughs. Gas wells of the bottom water coning type have relatively longer stable production.

REFERENCES

- [1] Ma, X., Li, D. (2000). Development Situation and Prospect of Onshore Natural Gas in China. *Oil Forum*. 6, 37-42.
- [2] Zou, C., Guo, J., Jia, A., Wei, Y., Yan, H., Jia, C., Tang, H. (2020). Connotations of Scientific Development of Giant Gas Fields in China. *Natural Gas Industry B*. 7(5), 533-546. <https://doi.org/10.3787/j.issn.1000-0976.2020.03.001>
- [3] Jia, C., Zhou, X., Wang, Z., Pi, X., Li, Q. (2002). Discovery of Kela-2 Gas Field and Exploration Technology. *China Petroleum Exploration*. 01.79-88. <https://doi.org/10.3969/j.issn.1672-7703.2002.01.009>
- [4] Li, B., Zhu, Z., Xia, J., Ma, C. (2009). Development Patterns and Key Techniques of Coal-formed Kela 2 Gas Field. *Petroleum Exploration and Development*. 36(3), 392-397. [https://doi.org/10.1016/S1876-3804\(09\)60134-8](https://doi.org/10.1016/S1876-3804(09)60134-8)
- [5] Wang, T., Zhu, Z., Li, N., Chen, Z., Wu, Z. (2006). Technical Guideline at The Initial Stage of Exploitation of As Large-scale Mono-block Abnormal Over-pressure Gas Field—Taking Kela 2 Gas Field as An Example. *Natural Gas Geoscience*. 17(4), 439-444. <https://doi.org/10.3969/j.issn.1672-1926.2006.04.002>
- [6] Wang, R., Li, L., He, Q., Wang, Q., Zhou, Y., Wang, X. (2020). Influencing Factors of Deliverability Change for Gas Wells in Carbonate Reservoirs with Natural Fractures. *Fault-Block Oil & Gas Field*. 27(3), 335-338,349. https://caod.oriprobe.com/articles/59036716/Influence_factors_of_deliverability_change_for_gas.htm
- [7] Yang, S., Xiao, X., Wang, X., Yang, Q. (2005). Stress Sensitivity of Rock and Its Influence on Productivity for Gas Reservoirs with Abnormal High Pressure. *Natural Gas Industry*. 2005(05), 94-95. <http://dx.chinadoc.cn/10.3863/j.issn.1000-2634.2008.02.020>
- [8] Lyu, W., Miao, F., Zhang, B., Zeng, Q., Xu, X., Ji, M. (2020). Fracture characteristics and their influence on natural gas production: A case study of the tight conglomerate reservoir in the Upper Triassic Xujiahe Formation in Jian'ge area, Sichuan Basin. *Oil & Gas Geology*. 41(03), 484-491. <https://doi.org/10.11743/ogg20200305>
- [9] Jiang, T., Zhang, H., Xu, K., Wang, Z., Wang, H. (2020). Reservoir Geomechanical Characteristics and the Influence on Development in Keshen Gas Field. *Journal of Southwest Petroleum University (Science & Technology Edition)*. 42(4), 1-12. <https://doi.org/10.11885/j.issn.1674-5086.2020.04.09.01>
- [10] Jiang, T., Zhang, H., Wang, H., Yin, G., Xiao, X. (2017). Effects of Faults Geomechanical Activity on Water Invasion in Kela 2 Gasfield, Tarim Basin. *Natural Gas Geoscience*. 28(11), 1735-1744. <http://www.nggs.ac.cn/EN/10.11764/j.issn.1672-1926.2017.09.003>
- [11] Ma, X., Wei, G., Qian, K., Li, Y. (2000). Recognition of Natural Gas Exploration in Foreland Basins of Central-west China. *Oil & Gas Geology*. 21(2), 114-117. <http://ogg.pepris.com/CN/10.11743/ogg20000205>
- [12] He, D., Ying, F., Zheng, J., Guo, H., Zhu, R. (2004). Numerical Simulation of Clastic Diagenesis and Its Application. *Petroleum Exploration and Development*. 31(06), 66-68. <http://www.cpedm.com/EN/abstract/abstract957.shtml#>
- [13] Jia, A., Tang, H., Han, Y., Lv, Z., Liu, Q., Zhang, Y., Sun, H., Huang, W., Wang, Z. (2019). The Distribution of Gas and Water and Development Strategy for Deep-buried Gasfield in Kuqa Depression, Tarim Basin. *Natural Gas Geoscience*. 30(6), 908-918. <http://www.nggs.ac.cn/CN/Y2019/V30/I6/908>
- [14] Chu, G., Shi, S., Shao L., Wang, H., Guo, Z. (2014). Contrastive Study on Geological Characteristics of Cretaceous Bashijiqike Formation in Keshen2 and Kela2 Gas Fields in Kuqa Depression. *Geoscience*. 28(3), 604-610. <http://www.geoscience.net.cn/EN/Y2014/V28/I3/604>

[15] Han, D., Li, Z., Shou, J. (2011). Reservoir Heterogeneities between structural positions in the anticline: A case study from Kela-2 gas field in the Kuqa Depression, Tarim Basin, NW China. *Petroleum Exploration and Development*. 38(3), 282-286. [https://doi.org/10.1016/S1876-3804\(11\)60034-7](https://doi.org/10.1016/S1876-3804(11)60034-7)

[16] Wan, Y., Zhong S., Wang X., Guo, H., Wang, T. (2018). Using Gas Production Profile to Describe the Dynamic Characteristics of Multilayer Gas Reservoirs. *Well Testing*. 27(3), 72-78. <https://doi.org/10.19680/j.cnki.1004-4388.2018.03.012>

[17] Asheim, H. "Analytical Solution of Dynamic Inflow Performance." Paper presented at the SPE Annual Technical Conference and Exhibition, Dallas, Texas, October 2000. doi: <https://doi.org/10.2118/63307-MS>

[18] MoradiDowlatabad, Mojtaba , Zarei, Faraj , and Morteza Akbari. "The Improvement of Production Profile While Managing Reservoir Uncertainties with Inflow Control Devices Completions." Paper presented at the SPE Bergen One Day Seminar, Bergen, Norway, April 2015. doi: <https://doi.org/10.2118/173841-MS>

[19] Li, H., Li, Y., Feng, Y., Zhong, J., Luo, H. (2020). An Interpretation Method for a Gas Production Profile Based on the Temperature and Pressure Behavior of Low-Permeability Gas Reservoirs. *Arabian Journal for Science and Engineering*. 45(9), 7773-7792. <https://doi.org/10.1007/s13369-020-04545-z>

[20] Catala, G.N., Torre, A.J., Theron, B.E. (1993). An Integrated Approach to Production Log Interpretation. In *Society of Petroleum Engineers. In SPE Middle East Oil Technical Conference & Exhibition*. <https://doi.org/10.2118/25654-MS>

[21] Ding, Z. X., Ullah, K., Huang, Y. (1994). A Comparison of Predictive Oil/Water Holdup Models for Production Log Interpretation in Vertical and Deviated Wellbores. In *SPWLA 35th Annual Logging Symposium*. <https://onepetro.org/SPWLAALS/proceedings-abstract/SPWLA-1994/All-SPWLA-1994/SPWLA-1994-KK/19175>

[22] Frisch, G., Perkins, T., John, Q. (2002). Integrating Wellbore Flow Images with a Conventional Production Log Interpretation Method. In *SPE Annual Technical Conference and Exhibition*. <https://doi.org/10.2118/77782-MS>

[23] Kang, J., Fu, X., Liang, S., Li, X., Chen, X., Wang, Z. (2019). A Numerical Simulation Study on the Characteristics of the Gas Production Profile and Its Formation Mechanisms for Different Dip Angles in Coal Reservoirs. *Journal of Petroleum Science and Engineering*, 181. <https://doi.org/10.1016/j.petrol.2019.106198>

[24] Jongkittinarukorn, K., Kerr, R. (2012). 3-Phase Flow Correlation Selection for Production Logging Interpretation. In *SPE Asia Pacific Oil and Gas Conference and Exhibition*. Society of Petroleum Engineers. <https://doi.org/10.2118/160299-MS>

[25] Davarpanah, A., Mirshekari, B., Behbahani, T. J., Hemmati, M. (2018). Integrated Production Logging Tools Approach for Convenient Experimental Individual Layer Permeability Measurements in A Multi-layered Fractured Reservoir. *Journal of Petroleum Exploration and Production Technology*. 8(3), 743-751. <https://doi.org/10.1007/s13202-017-0422-3>

[26] Jongkittinarukorn, K., Kerr, R. (2011). Flow Model Selection for Production Logging Interpretation. In *SPE Asia Pacific Oil and Gas Conference and Exhibition*. <https://doi.org/10.2118/145579-MS>

AUTHORS

Zhaolong LIU

Affiliation: PetroChina Research Institute of Petroleum Exploration & Development, Beijing, China
e-mail: liuzhaol69@petrochina.com.cn

Yongzhong ZHANG

Affiliation: PetroChina Research Institute of Petroleum Exploration & Development, Beijing, China
e-mail: zhangyongzhong69@petrochina.com.cn

Hualin LIU

Affiliation: PetroChina Research Institute of Petroleum Exploration & Development, Beijing, China
e-mail: liuhualin69@petrochina.com.cn

Zhikai LV

Affiliation: PetroChina Research Institute of Petroleum Exploration & Development, Beijing, China
e-mail: lvzk@petrochina.com.cn

Weigang HUANG

Affiliation: PetroChina Research Institute of Petroleum Exploration & Development, Beijing, China
e-mail: huangwg69@petrochina.com.cn