

**ATMOSFERA**

Atmósfera

ISSN: 0187-6236

Universidad Nacional Autónoma de México, Centro de  
Ciencias de la Atmósfera

Pinzón, Reinhardt Erwin; Nakaegawa, Tosiya; Hibino, Kenshi; Takayabu, Izuru  
A climate analogue approach to understanding the future  
climates of six western South American capital cities  
Atmósfera, vol. 34, no. 3, 2021, pp. 255-266  
Universidad Nacional Autónoma de México, Centro de Ciencias de la Atmósfera

DOI: <https://doi.org/10.20937/ATM.52794>

Available in: <https://www.redalyc.org/articulo.oa?id=56572301002>

- ▶ [How to cite](#)
- ▶ [Complete issue](#)
- ▶ [More information about this article](#)
- ▶ [Journal's webpage in redalyc.org](#)

The logo for Redalyc.org, featuring the text "redalyc.org" in a stylized font with a red dot above the "y".

Scientific Information System Redalyc

Network of Scientific Journals from Latin America and the Caribbean, Spain and  
Portugal

Project academic non-profit, developed under the open access initiative

## A climate analogue approach to understanding the future climates of six western South American capital cities

Reinhardt Erwin PINZÓN<sup>1,2\*</sup>, Toshiyuki NAKAEGAWA<sup>3,4</sup>, Kenshi HIBINO<sup>3</sup> and Izuru TAKAYABU<sup>4</sup>

<sup>1</sup>Universidad Tecnológica de Panamá, Centro de Investigaciones Hidráulicas e Hidrotécnicas, Panamá.

<sup>2</sup>Sistema Nacional de Investigación (SNI), SENACYT, Panamá.

<sup>3</sup>Institute of Industrial Science, The University of Tokyo, Japan.

<sup>4</sup>Meteorological Research Institute, Japan Meteorological Agency, Japan.

\*Corresponding author; email: reinhardt.pinzon@utp.ac.pa

Received: November 15, 2019; accepted: July 10, 2020

### RESUMEN

Se identificaron análogos climáticos futuros para seis ciudades capitales en el oeste de Sudamérica utilizando una novedosa técnica no paramétrica y experimentos de conjunto. Se aplicó el modelo MRI-AGCM3.2H con una resolución horizontal de aproximadamente 60 km, tres esquemas de convección, cuatro distribuciones de temperatura de la superficie del mar y dos condiciones iniciales. Todos los experimentos de conjunto se realizaron con el escenario A1B del Informe Especial sobre Escenarios de Emisiones, en el que las emisiones acumulativas son similares a las del escenario RCP 6.0. La mayoría de las ciudades análogas futuras estaba en latitudes más bajas que sus respectivas ciudades objetivo. En general, todos los análogos de las ciudades objetivo tuvieron puntajes de similitud de 0.1-0.3. De los seis análogos, cuatro se ubicaron en África central y meridional, mientras que los dos restantes se ubicaron en América del Sur. Las variaciones estacionales proyectadas en la temperatura del aire superficial y la precipitación en Santiago, Chile, son similares al clima actual en Ciudad del Cabo, Sudáfrica, y el análogo climático de La Paz, Bolivia, se encuentra en Oruro, Bolivia. El método no paramétrico utilizado en este estudio se puede aplicar a una variedad de evaluaciones de impacto en un clima global cambiante.

### ABSTRACT

Future climate analogues were identified for six capital cities in western South America using a novel non-parametric technique and ensemble experiments. We applied the MRI-AGCM3.2H model with a horizontal resolution of approximately 60 km, three convection schemes, four sea surface temperature distributions, and two initial conditions. All ensemble experiments were conducted under scenario A1B of the Special Report on Emissions Scenarios, in which cumulative emissions are similar to those of the RCP 6.0 scenario. The majority of future analogue cities were at lower latitudes than their respective target cities. In general, all analogues of target cities had similarity scores of 0.1-0.3. Of the six analogues, four were located in central and southern Africa, whereas the remaining two were located in western South America. Projected seasonal variations in surface air temperature and precipitation in Santiago, Chile are similar to the current climate in Cape Town, South Africa, and the climate analogue for La Paz, Bolivia, is found in Oruro, Bolivia. The non-parametric method used in this study can be applied to a variety of impact assessments under a changing global climate.

**Keywords:** western South America, multi-ensemble, climate analogue, surface air temperature, climate change, precipitation.

## 1. Introduction

Projecting the future climate condition of a given location is an issue of importance for communities, political systems, and environmental scientists. The climate analogue approach can be used to provide this vital information. Identifying spatial and temporal analogues allows us to identify biota and harvest species that are most susceptible to climate change (Leibing et al., 2013; Nakaegawa et al., 2017). This method also provides insight into how present climate conditions in target regions compare to future or past conditions in other areas (e.g., Williams et al., 2007; Ramírez-Villegas et al., 2011) and it has been applied in Central America (Pinzón et al., 2017), Russia (Nakaegawa et al., 2019a), Japan (Ishizaki et al., 2012), Australia (Nakaegawa et al., 2017), and at a global scale (Arnbjerg-Nielsen et al., 2015; Soteriades et al., 2017). Cabré et al. (2014) stated that “[Los Andes] produce distinctive features in the South American climate, particularly at low levels. The presence of a low-level jet along the eastern slopes of the central Andes as well as the existence of a region of maximum frequency of winter cyclogenesis over eastern South America, are examples of the topographic influence on the continental climate”. Hibino et al. (2015) obtained probabilistic scatterings of climate analogues by integrating uncertainties derived from sea surface temperature (SST) projections, climate models themselves, and inherent variability.

Western South America comprises a broad range of climate conditions, including tropical, dry, temperate, and cold climate regimes. Locally, forcing (e.g., orographic precipitation [Nakaegawa et al., 2019b]) occurs off the west coast of southern South America and influences the southern Andes. The Andes may affect future climate changes in western America, although future precipitation at the end of this century is projected to increase during the wet season and to decrease in the dry season over most of South America (Kitoh et al., 2011). The breadth of the Andean mountain range is < 200 km at subtropical latitudes and increases to 400 km in the south. This gives rise to a raised tableland that disturbs the climatological behavior in South America, including tropical, subtropical, and extratropical landscapes. West of the Andes, seasonal precipitation is controlled among the SST of the Pacific Ocean, by two other factors that define it (Solman, 2013). In this area, hydro-climatic conditions are further

influenced by surface-air temperature (SAT) differences between the mainland and oceans. The Atlantic and Pacific oceans are the most important determinants of climate variability in South America (Ramos da Silva and Hass, 2016), with precipitation appearing to be the leading hydro-climatological component (e.g., Nakaegawa et al., 2014a; Kusunoki et al., 2019). Similarly, heterogeneous demographic group migration is most strongly influenced by exposure to monthly SAT shocks, relative to monthly precipitation shocks and regular changes in the climate over longer time periods (Thiede et al., 2016).

In the last three years, El Niño, the Pacific Decadal Oscillation, and the highest SAT measures ever recorded have occurred in South America. These events have affected agriculture and food security in Latin America and have led to economic and social impacts (Martínez et al., 2017). Pugh et al. (2016) estimated that a significant proportion of the existing global areas for growing wheat, maize, and rice are vulnerable to climate change. Giorgi (2006) suggested that some regions may be particularly susceptible even to subtle effects of reduced precipitation and increased variation in precipitation (Nakaegawa et al., 2014b, c). Furthermore, wild species are vulnerable even to minor changes in climate (Mora et al., 2013).

Drastic economic impacts observed in some countries can be directly attributable to climate change (Fábrega et al., 2013). The extent of climate change impacts in western South America point to the ways in which local-scale future climates may fluctuate under global climate change. We identified climate analogues by identifying cities where the current climate was similar to that of the projected future climate of another target city. Future climate analogues for six western South American capital cities were identified using the non-parametric method of Hibino et al. (2015). Simulations of the Meteorological Research Institute-Atmospheric General Circulation Model (MRI-AGCM [Mizuta et al., 2012]) were performed for future ( $n = 24$ ) and current ( $n = 6$ ) climates to reproduce uncertainties in climate projections.

## 2. Materials and methods

### 2.1 Climate analogues

Six-hundred-year modeled data and a novel methodological approach are applied to assess climate

analogues at a monthly mean timescale in a probabilistic manner. We used the root mean square difference of monthly mean SAT and precipitation data between current and projected future climates in Eqs. (1), (2), and (3) to compute similarity scores. Similarity scores for climate analogues account for uncertainties in climate projections. Climate similarity across years was evaluated by relating the monthly time series of SAT and precipitation for each sample (city).

To evaluate future changes in precipitation and SAT, in addition to uncertainties in climate projections for target cities, the similarity between a climate analogue city (with geographical location  $l$ ) and the projected future climate in a given target city (with geographical location  $l_{\text{target}}$ ) was calculated using the root mean square deviation (RMSD) as follows:

$$\Delta_{\beta}(l, l_{\text{targets}}, q) = \sqrt{\frac{1}{\mu} \sum_{i=1}^{\mu} (\beta_i^{\text{obs}}(l, q) - \langle \beta_i^f(l_{\text{target}}) \rangle)^2} \quad (1)$$

where  $q$  is an index of an ensemble of current climate variables across years (1-25) and months (from  $i = 1$  to  $\mu = 12$ ). Brackets  $\langle \dots \rangle$  represent ensemble means of convection scheme, SST distribution, initial conditions, and years ( $n = 600$ ),  $f$  indicates a future climate, and  $\beta$  is precipitation or temperature. Similar scores were obtained as a relative magnitude of the RMSD associated with projection uncertainties, defined as:

$$U\Delta_{\beta}(l_{\text{targets}}, j) = \sqrt{\frac{1}{\mu} \sum_{i=1}^{\mu} (\beta_i^f(l_{\text{targets}}, j) - \langle \beta_i^f(l_{\text{target}}) \rangle)^2} \quad (2)$$

where  $j$  is an index of ensemble variables of future climate (1 – 600). Thus, similarity scores for precipitation and SAT were calculated as follows:

$$S_{\beta} = \frac{1}{25} \sum_{q=1}^{25} \frac{\Omega_{j=1}^{600} \{ \Delta_{\beta,j}(l, l_{\text{targets}}, q) < U\Delta_{\beta,k}(l_{\text{targets}}, j) \}}{600} \quad (3)$$

where  $\Omega$ , the nominator, specifies the number of times during which the condition inside the bracket is satisfied. This accounts for the relative degree of similarity given climate projection uncertainties. Scores were averaged over 25 samples of current climate, and the total similarity score was calculated from the SAT and precipitation scores as  $S = S_T \times S_P$ . A similarity score therefore reflects the consistency of a climate analogue with projections for the target city.

## 2.2 Current observations

The current observation period is selected to be equivalent to the length of current climate simulations (1979-2003). Due to constraints in the observation dataset (Mitchell and Jones, 2005) climate analogues were identified at a  $0.5^\circ$  horizontal resolution. Cities themselves were not explicitly represented, but rather a  $0.5^\circ$  grid-box value representing the effect of urban areas on climate was applied over the cities. These grid-boxes were used to remove bias in the AGCM simulations.

## 2.3 Ensemble climate simulations

Experimental variables of future climate ( $n = 24$ ) comprised three convection schemes (the Yoshimura scheme [YS, Yoshimura et al., 2015], the Arakawa-Schubert scheme [AS, Randall and Pan, 1993], and the Kain-Fritsch scheme [KF, Kain and Fritsch, 1993]), two initial conditions, and four SST spatial patterns. Each variable included a 25-year integration period. Therefore, we produced a total of 600 years of climate projections. The YS uses a linear interpolation between two convective updrafts, which allows for unequivocal classification of cloud groupings, and further has the benefit of layer-by-layer variable calculation. The AS assumes a layered atmosphere with a cumulus cloud sheet occupying a minor portion and considers updraft flux and the properties of dry, cold air located above clouds. The KF uses a cloud model to regulate the interchange of mass between clouds and their environs as a function of the opposition of dissimilar mixtures of clear and overcast air.

All current and future climate projections using AGCMs inherently include model biases. We prepared unbiased future climate projections by applying the  $\Delta$  method to the climate simulations. We recognized climate analogue cities as those where the current climatic conditions most closely resembled the projected previous 25-year twenty-first century climatic conditions in each target city using a global search and two variables (monthly mean SAT and precipitation). We then introduced a variation factor, or pattern-scaling factor, to obtain unbiased data about the future climate. Future monthly discrepancies in SAT (T) and precipitation (P) were obtained using Eqs. (4) and (5), respectively, as follows:

$$T_f = T_{\text{obs}} + (T_{Mf} - T_{Mp}) \quad (4)$$

$$P_f = P_{obs} * (P_{Mf} / P_{Mp}) \quad (5)$$

where *obs* denotes the current observation data, and *Mp* and *Mf* are the future general circulation models, respectively. We only applied current model results using the  $\Delta$  method and did not include these results in the calculations of similarity scores, as described above.

#### 2.4 Emission scenarios

We ran future climate simulations for the final 25 years of the twenty-first century (2075-2099) using scenario A1B of the Intergovernmental Panel on Climate Change (IPCC, 2000) from the Special Report on Emissions Scenarios (SRES) in the MRI-AGCM3.2H model. The horizontal resolution of this model was approximately 60 km. Relative to the current 25-year period (1979-2003), global mean SST is projected to increase by 2.17 °C in the final 25 years of the twenty-first century. The SRES is widely used by the IPCC Fifth Assessment Report Working Group II. Although another scenario, Representative Concentration Pathway 6.0 W m<sup>-2</sup> (RCP 6.0) is used by Working Group I, these scenarios have similar predicted increases in SAT, i.e., a change of 1.4-3.1 °C is predicted by RCP 6.0. The estimated global mean SAT according to SRES A1B is 2.8 °C, whereas that according to RCP 6.0 is not yet published but is assumed to be 2.3 °C. However, local-scale changes are expected to vary among regions, and differences among local-scale changes should be greater than that of the global mean change in SAT. Therefore, the

results from this study may be used in place of RCP 6.0 values in the IPCC Fifth Assessment Reports.

#### 2.5 Target city selection

The six target capital cities in western South America were selected based on population size (Table I, Fig. 1). The future climate analogue period was the same as that used in the future climate simulations (i.e., 2075-2099). We first projected the future climate of these six capital cities, and then computed similarity scores between pairs of cities and locations around the globe. Locations with maximum similarity scores, both globally and within the Americas, were selected.

### 3. Results and discussion

#### 3.1 Global search

A robust climate analogue method should prioritize compactness and distance over connectedness; analogues can only achieve their purpose with a suitable level of differentiation. Therefore, global searches ensure correct, complete assessments of climate analogues. Spatially, analogues use past climates to inform potential future conditions that may result elsewhere from climate change. The best climate analogue cities for the six target cities, based on a global search, are shown in Figure 2. All analogues of target cities had similarity scores of 0.1-0.3. Of the six analogues, four were located in central and southern Africa, whereas the remaining two were located in South America. The results of regional and global search results are shown in Table II.

Table I. Six target capital cities in western South America for which climate analogues were determined.\*

Capital city	Country	Latitude	Longitude	Elevation (masl)	Population of the capital city**
Caracas	Venezuela	10.51	-66.92	934.13	2.67 million
Bogotá	Colombia	4.60	-74.08	2605.21	7.18 million
Quito	Ecuador	-0.21	-78.50	2819.54	2.78 million
Lima	Peru	-12.05	-77.03	160.94	9.75 million
La Paz	Bolivia	-16.50	-68.13	3651.43	2.72 million
Santiago	Chile	-33.44	-70.65	569.82	6.26 million

\*City locations are shown in Figure 1.

\*\*Population estimates were obtained from: <http://www.ine.gov.ve/> (Caracas), <https://www.dane.gov.co> (Bogotá), <https://www.ecuadorencifras.gob.ec/estadisticas/> (Quito), <https://www.inei.gob.pe/> (Lima), <https://www.ine.gob.bo> (La Paz), and <https://www.ine.cl> (Santiago).

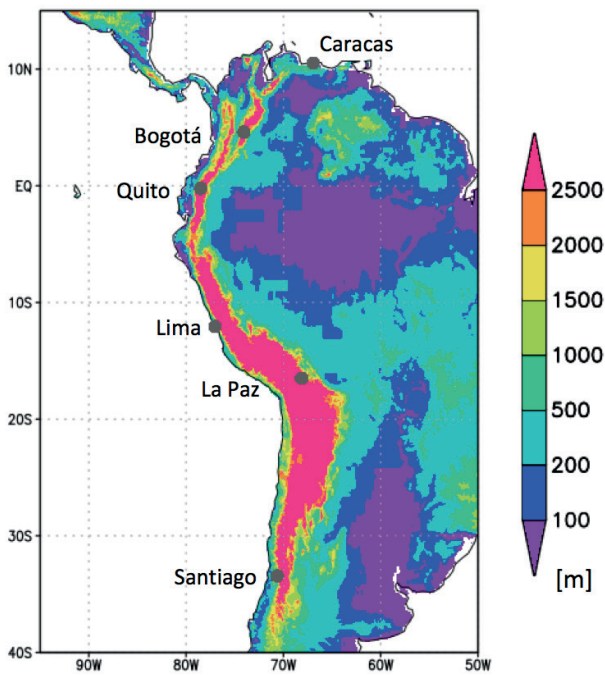


Fig. 1. The six target capital cities located in western South America. The color scale represents elevation above sea level (m).

Table II. Climate analogue cities identified using a global search.\*

Target	Analogue (global)	
City	City	Country
Caracas	Barcelona	Venezuela
Bogotá	Bujumbura	Burundi
Quito	Kigali	Rwanda
Lima	Namibe	Angola
La Paz	Oruro	Bolivia
Santiago	Cape Town	South Africa

\*See Figure 2 for geographical locations. Note that analogue cities were represented by 0.5° grid boxes.

The climate analogue for La Paz, Bolivia, is located in Oruro, Bolivia. The maximum annual change (representing the difference between future and current SAT) in La Paz was 3.0 °C with the maximum monthly changes expected in June (Fig. 3e). The greatest increase in precipitation in Oruro occurs from January to March and from October to December (Fig. 3k). Total, SAT, and precipitation similarity

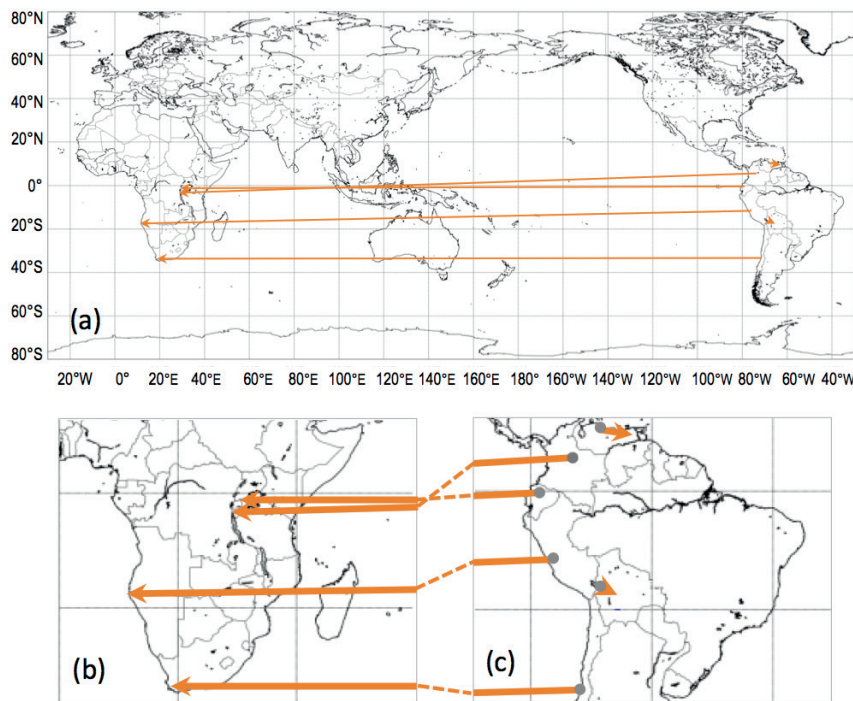


Fig. 2. Optimal climate analogue cities for the six target capitals based on a global search: (a) global distribution and enlarged views for (b) Africa and (c) South America. The starting point and arrowhead of each vector represent a target capital and its climate analogue city, respectively. The similarity scores of the six target cities ranged from 0.1 to 0.3.

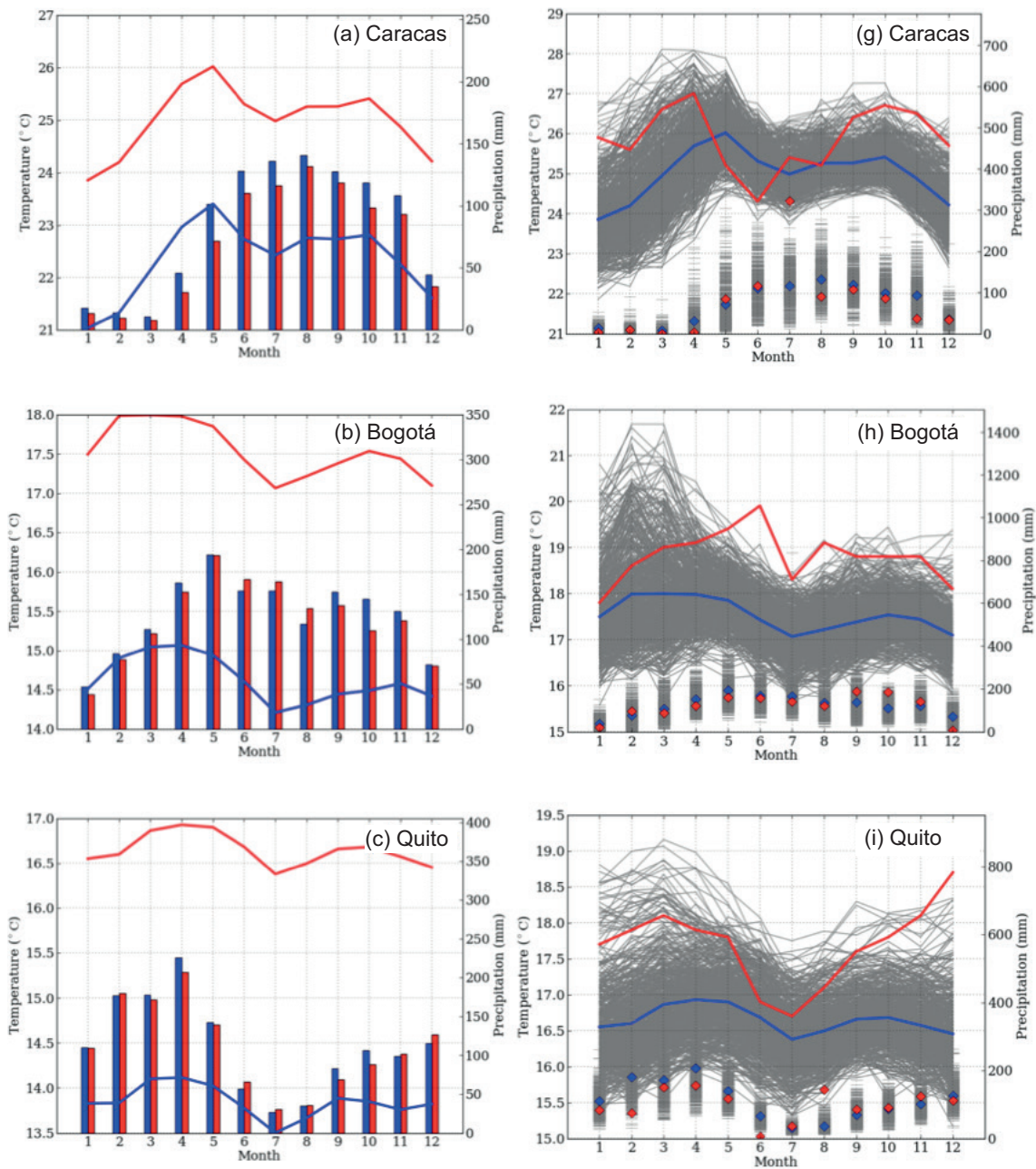


Fig. 3. Climatological monthly mean values of surface air temperature and precipitation for (a and g) Caracas, (b and h) Bogotá, (c and i) Quito, (d and j) Lima, (e and k) La Paz, and (f and l) Santiago. Blue lines and symbols represent the future climatological monthly mean values in the target city, and red represents values for the climate analogue city in 1979. The gray shading represents the 600 realizations of the future climate in the target city produced using multi-ensemble simulations with the MRI-AGCM3.2H model (continues).

scores for Santiago, Chile were 0.401, 0.794, and 0.928, respectively (Fig. 4a-c), and the best climate analogue city was Cape Town, South Africa. Other candidate climate analogue regions were located in

Australia and South America (Fig. 4a). The future SAT in Santiago was projected to increase by 2.5 °C, and precipitation was expected to decrease (Fig. 3f, l). Given that climate analogues should share season-

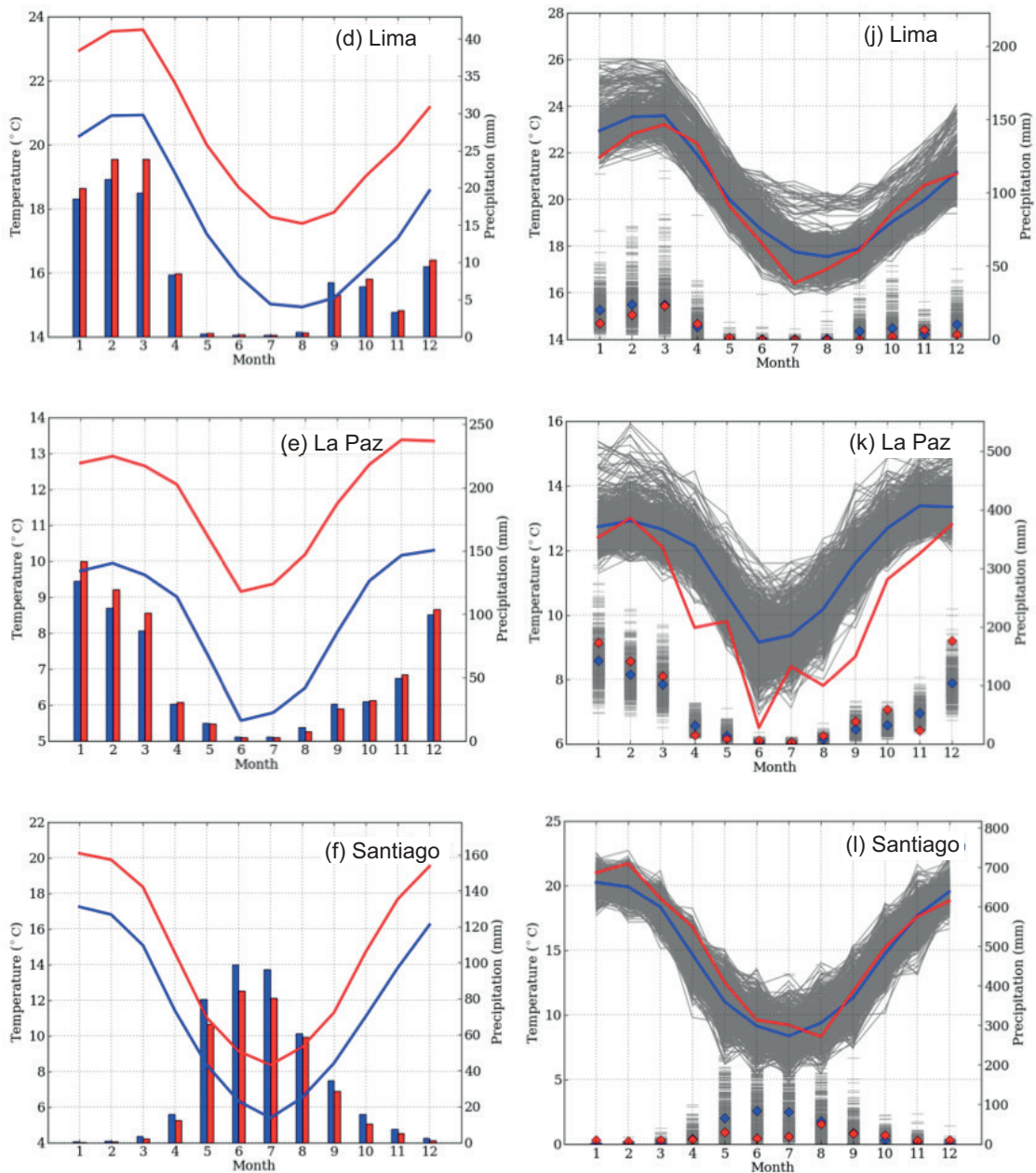


Fig. 3. (continued). Climatological monthly mean values of surface air temperature and precipitation for (a and g) Caracas, (b and h) Bogotá, (c and i) Quito, (d and j) Lima, (e and k) La Paz, and (f and l) Santiago. Blue lines and symbols represent the future climatological monthly mean values in the target city, and red represents values for the climate analogue city in 1979. The gray shading represents the 600 realizations of the future climate in the target city produced using multi-ensemble simulations with the MRI-AGCM3.2H model.

al cycles and comparable SATs in future climate scenarios (Fig. 4b), high SAT similarity scores for analogues of Santiago were limited to a small area of southeastern South Africa. High precipitation

similarity scores were well-distributed globally and found for locations in South Africa, Eastern Europe, Siberia, western North America, and western South America (Fig. 4c).

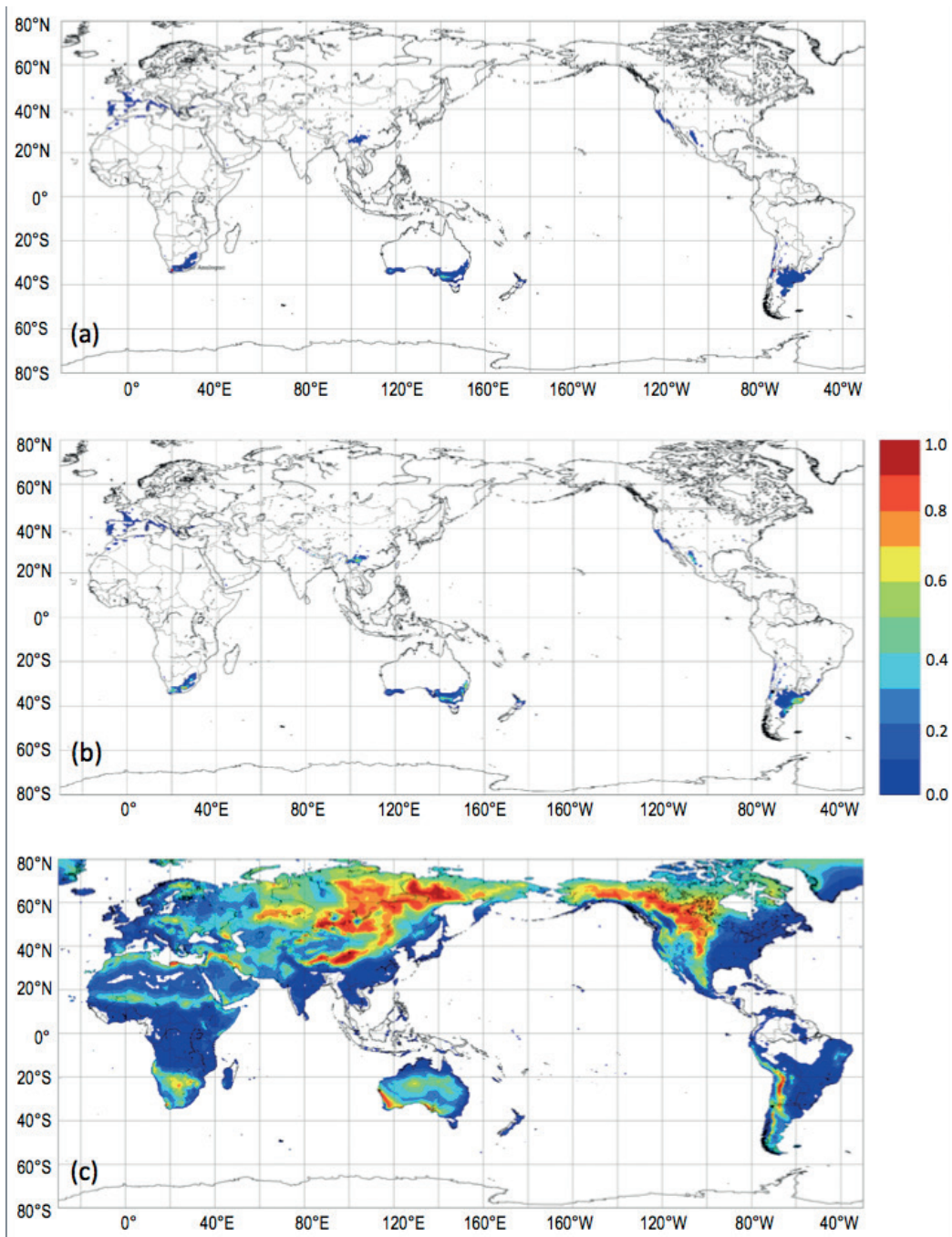


Fig. 4. Geographical distribution of normalized (a) integrated similarity scores and similarity scores for (b) surface air temperature and (c) precipitation for climate analogue regions of Santiago, Chile. Scores were normalized based on the highest scores obtained (0.401, 0.794, and 0.928, respectively).

Low similarity scores for the two analogue cities located in South America (Barcelona in Venezuela, and Oruro in Bolivia) were found. These two cities are the climate analogues of Caracas in Venezuela and

La Paz in Bolivia, respectively (Fig. 3a, e, g, k). La Paz may experience a unique climate throughout the final 25 years of the twenty-first century (Williams et al., 2007; Nakaegawa et al., 2017; Pinzón et al.,

2017) given that the integrated similarity scores, SAT, and maximum precipitation scores were low at 0.027, 0.194, and 0.459, respectively (Table III, Fig. 3e, k). Within central Africa, the cities of Bujumbura, Burundi and Kigali, Rwanda were identified as analogues of the target cities of Bogotá, Colombia and Quito, Ecuador (Figs. 2a and 3b, c, h, i). Quito had the second worst maximum integrated of 0.031, while Bogotá has a high maximum precipitation score of 1.000. Finally, the climate analogue of the target city Lima, Peru is Namibe, Angola. All analogues situated in the southern hemisphere were found at similar latitudes to the target cities.

### 3.2 Intra-Latin America search

Climate analogues identified in the search restricted to Latin America are depicted in Figure 5. The majority of the target cities are located close to the equator or near predicted future hotspots. Target and analogue cities that appear close together differ greatly in elevation (Table I). The majority of the target cities are located at high elevations with SATs that are correspondingly low relative to lower-elevation cities. Cities that are in close geographic proximity may therefore differ greatly in SAT but share similar seasonal patterns.

The method applied in this study allowed us to identify analogue cities by evaluating all grid points using integrated similarity scores. The Latin American analogue for Bogotá is located in central Colombia, while those for both Quito and Lima are located in northeastern Latin America, and the analogue of Santiago is located at 70 °W, 32 °S. The integrated similarity scores for these four target cities were lower in the intra-Latin America search than in the global search.

### 3.3 Temporal evolution of analogue city locations

Non-zero integrated similarity scores were distributed in distinct areas on some continents in the global search. Although the changes in SAT and precipitation over years were linear, changes along climate analogue vectors (i.e., geographical change) were not necessarily linear. Vectors were placed lengthwise from the target to the analogue city whenever the vector fell entirely on land (Fig. 5). Elevation changes along the target-analogue vectors were never constant in terms of slope or projected seasonal changes in

SAT and precipitation. Thus, lengthwise interpolation could lead to mis-identified analogue cities. The climate analogue method applied here identified analogue cities after projecting the future climate of the target cities using the pattern scaling method for targeted global SAT rise. We do not suggest that the time evolution of the Latin American climate analogues can be approximated as a dividing point on the arrows shown in Figures 2 and 5. Although climate zones were distributed according to latitude as a first-order approximation, they were only defined for land areas.

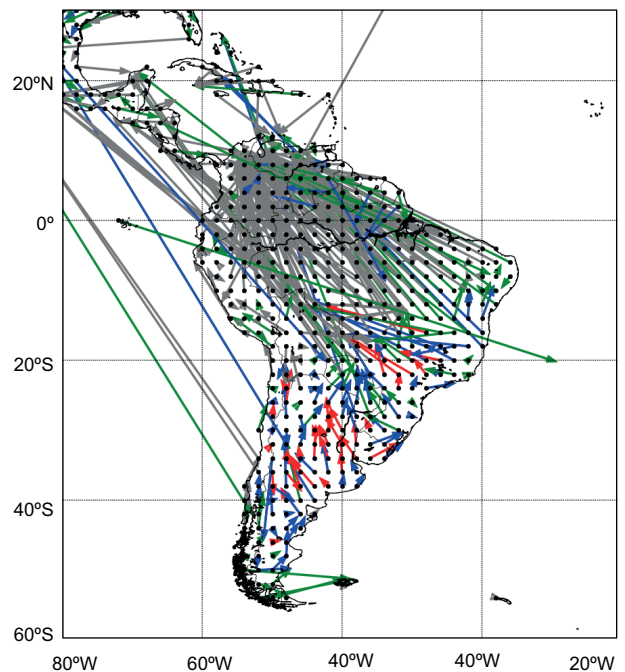


Fig. 5. Best climate analogue cities for all 0.5° grid points based on a search confined to the Americas. The starting point and arrowhead of each vector represent a target capital and its climate analogue city, respectively. The color of each arrow indicates the locations' similarity score: gray = 0.0-0.1, green = 0.1-0.3, blue = 0.3-0.5, and red = 0.5-1.0.

### 3.4 Inappropriate climate analogue cities

The analogue cities with the best integrated scores for La Paz and Quito should not be practically considered as analogues because of their low integrated similarity scores (0.090). Both of these target cities should instead be considered as places that will experience entirely novel climates (Williams et al., 2007).

However, we note that the best SAT and precipitation scores were reasonable (Table III), and therefore the analogues of these cities can still be used when no other information is available. Analogue locations based on SAT and precipitation scores can be used for specific purposes such as flood prevention or heat wave projections.

Table III. Maximum integrated similarity scores, maximum surface-air temperature, and maximum precipitation scores for each target city in the global search.

Target city	Maximum scores		
	Integrated	SAT	Precipitation
Caracas	0.094	0.737	0.837
Bogotá	0.196	0.594	1.000
Quito	0.031	0.255	0.394
Lima	0.165	0.499	0.970
La Paz	0.027	0.194	0.459
Santiago	0.401	0.794	0.928

SAT: surface-air temperature.

#### 4. Conclusions

Climate analogues for six western South American capital cities were identified using a non-parametric climate analogue method and the MRI-AGCM3.2H model under the SRES A1B scenario. For the analysis, two different initial conditions, multi-ensemble simulations, three convection schemes, and four SST datasets were included (Nakaegawa et al., 2017). These datasets may have affected uncertainties in the climate analogues to varying degrees. The method applied in this study identifies likely climate analogues by conceptualizing SAT and precipitation as a time series. Although there are many approaches to identify climate analogues over various time scales, our method used an annual seasonal cycle. The majority of future analogue cities were at lower latitudes than their respective target cities. A global search identified two analogue cities in central South America and the remaining four in central and southern Africa. Projected seasonal variations in surface air temperature and precipitation in Santiago, Chile are similar to the current climate in Cape Town, South Africa, and the climate analogue for La Paz, Bolivia, is found in Oruro, Bolivia. In general, all analogues

of target cities had similarity scores of 0.1-0.3. Of the six analogues, four were located in central and southern Africa, whereas the remaining two were located in South America. In the global search, Santiago had the best-matching climate analogue city in the seven cities; La Paz and Quito had the worst and second worst ones, and even the analogue cities with highest score are considered as inappropriate. All climate analogue cities were classified with respect to uncertainties in future climate projections. An analogue search confined to Latin America had lower integrated similarity scores compared to the global search but provided more virtual feelings of future climate of the target cities because populations in western South America have much more knowledge about the climates in South America than those of other regions of the globe.

The latest future climate projections under the Shared Socioeconomic Pathways (SSP)/RCP-based scenario are becoming available, although the results in this study were obtained under the SRES A1B and the updates of the climate analogues are an urgent task. A new target of long-term surface air temperature under the Paris Agreement is to keep the global average increase in surface air temperature below 2 °C with respect to preindustrial levels, as well as making efforts to limit the increase to 1.5 °C with the aim of achieving sustainable development in the world. This new target is lower than the projected global average surface air temperature under the SRES A1B, suggesting that future climates under this target are more similar to those of this study. Climate analogues under this new target may have higher scores than those in this study.

Climate analogue is a primitive approach to impact assessments of climate changes and adaptations against impacts, and therefore useful in their early stage. The non-parametric method used in this study can provide uncertainties in climate analogues as well as the best climate analogue city. Such information about uncertainties is essential for decision-making by policy makers and stake holders.

#### Acknowledgments

RP acknowledges funding from Sistema Nacional de Investigación de Panamá (SNI), project APY-GC-2016-018 of Convocatorias Públicas de

Apoyo a la Generación de Capacidades Científicas y Tecnológicas of the Secretaría Nacional de Ciencia y Tecnología e Innovación (SENACYT), and a visiting scholar program of the Ministry of Infrastructure, Transport, Land, and Tourism. Furthermore, we express our gratitude to the editor and the three anonymous referees of this paper for their beneficial comments. TN acknowledges funds and support from the JSPS KAKENHI Grant Numbers 16H06291 and 20K12154. IT and TN acknowledge support from Theme C of the TOUGOU program (JPMXD0717935498) funded by the Japanese Ministry of Education, Culture, Sports, Science and Technology.

## References

- Arnbjerg-Nielsen K, Funder SG, Madsen H. 2015. Identifying climate analogues for precipitation extremes for Denmark based on RCM simulations from the ENSEMBLES database. *Water Science & Technology* 71: 418-425. <https://doi.org/10.2166/wst.2015.001>
- Cabré MF, Solman SA, Núñez MN. 2014. Climate downscaling over southern South America for present-day climate (1970-1989) using the MM5 model mean, interannual variability and internal variability. *Atmósfera* 27: 117-140. [https://doi.org/10.1016/S0187-6236\(14\)71105-1](https://doi.org/10.1016/S0187-6236(14)71105-1)
- Fábrega J, Nakaegawa T, Pinzón R, Nakayama K, Arakawa O, SOUSEI Theme-C modeling group. 2013. Hydroclimate projections for Panama in the 21st century. *Hydrological Research Letters* 7: 23-29. <https://doi.org/10.3178/hrl.7.23>
- Giorgi F. 2006. Climate change hot-spots. *Geophysical Research Letters* 33: 1-4. <https://doi.org/10.1029/2006GL025734>
- Hibino K, Takayabu I, Nakaegawa T. 2015. Objective estimate of future climate analogues projected by an ensemble AGCM experiment under the SRES A1B scenario. *Climatic Change* 131: 677-689. <https://doi.org/10.1007/s10584-015-1396-0>
- IPCC. 2000. Special report on emissions scenarios. A special report of working group III of the Intergovernmental Panel on Climate Change (Nakicenovic N, Alcamo J, Davis G, de Vries B, Fenhann J, Gaffin S, Gregory K, Grüber A, Yong Jung T, Kram T, La Rovere EL, Michaelis L, Mori S, Morita T, Pepper W, Pitcher H, Price L, Riahi K, Roehrl A, Rogner H-H, Sankovski A, Schlesinger M, Shukla P, Smith S, Swart R, van Rooijen S, Victor N, Dadi Z, Eds.). Cambridge University Press, Cambridge, United Kingdom, 595 pp.
- Ishizaki NN, Shiogama H, Takahashi K, Emori S, Dairaku K, Kusaka H, Nakaegawa T, Takayabu I. 2012. An attempt to estimate of probabilistic regional climate analogue in a warmer Japan. *Journal of the Meteorological Society of Japan* 90: 65-74. <https://doi.org/10.2151/jmsj.2012-B05>
- Kain JS, Fritsch JM. 1993. Convective parameterization for mesoscale models: The Kain-Fritsch scheme. In: *The representation of cumulus convection in numerical models* (Emanuel KA, Raymond DJ, Eds.). *Meteorological Monographs* 24: 165-170. [https://doi.org/10.1007/978-1-935704-13-3\\_16](https://doi.org/10.1007/978-1-935704-13-3_16)
- Kitoh A, Kusunoki S, Nakaegawa T. 2011. Climate change projections over South America in the late 21st century with the 20 and 60 km mesh Meteorological Research Institute atmospheric general circulation model (MRI-AGCM). *Journal of Geophysical Research* 116: D06105. <https://doi.org/10.1029/2010JD014920>
- Kusunoki S, Nakaegawa T, Pinzón R, Galan JS, Fábrega JR. 2019. Future precipitation changes over Panama projected with the atmospheric global model MRI-AGCM3.2. *Climate Dynamics* 53: 5019-5034. <https://doi.org/10.1007/s00382-019-04842-w>
- Leibing C, Signer J, van Zonneveld M, Jarvis A, Dvorak W. 2013. Selection of provenances to adapt tropical pine forestry to climate change on the basis of climate analogs. *Forests* 4:155-178. <https://doi.org/10.3390/f4010155>
- Martínez R, Zambrano E, Nieto JJ, Hernández J, Costa F. 2017. Evolución, vulnerabilidad e impactos económicos y sociales de El Niño 2015-2016 en América Latina. *Investigaciones Geográficas* 68: 65-78. <https://doi.org/10.14198/INGEO2017.68.04>
- Mitchell TD, Jones PD. 2005. An improved method of constructing a database of monthly climate observations and associated high-resolution grids. *International Journal of Climatology* 25: 693-712. <https://doi.org/10.1002/joc.1181>
- Mizuta R, Yoshimura H, Murakami H. 2012. Climate simulations using MRI-AGCM3.2 with 20-km grid. *Journal of the Meteorological Society of Japan* 90A: 233-258. <https://doi.org/10.2151/jmsj.2012-A12>
- Mora C, Frazier AG, Longman RJ, Dacks RS, Walton MM, Tong EJ, Sanchez JJ, Kaiser LR, Stender YO, Anderson JM, Ambrosino CM, Fernández-Silva I, Giuseffi

- LM, Giambelluca TW. 2013. The projected timing of climate departure from recent variability. *Nature* 502, 183-187. <https://doi.org/10.1038/nature12540>
- Nakaegawa T, Kitoh A, Ishizaki Y, Kusunoki S, Murakami H. 2014a. Caribbean low-level jets and accompanying moisture fluxes in a global warming climate projected with CMIP3 multi-model ensemble and fine-mesh atmospheric general circulation models. *International Journal of Climatology* 34: 964-977. <https://doi.org/10.1002/joc.3733>
- Nakaegawa T, Kitoh A, Murakami H, Kusunoki S. 2014b. Annual maximum 5-day precipitation total and maximum number of consecutive dry days over Central America and the Caribbean in the late twenty-first century projected by an atmospheric general circulation model with three different horizontal resolutions. *Theoretical and Applied Climatology* 116: 155-168. <https://doi.org/10.1007/s00704-013-0934-9>
- Nakaegawa T, Kitoh A, Kusunoki S, Murakami H, Arakawa O. 2014c. Hydroclimate changes over Central America and the Caribbean in a global warming climate projected with 20-km and 60-km mesh MRI atmospheric general circulation models. *Meteorology and Geophysics* 65: 15-33. <https://doi.org/10.2467/mripapers.65.15>
- Nakaegawa T, Hibino K, Takayabu I. 2017. Identifying climate analogues for cities in Australia by a non-parametric approach using multi-ensemble, high-horizontal-resolution future climate projections by an atmospheric general circulation model, MRI-AGCM3.2H. *Hydrological Research Letters* 11: 72-78. <https://doi.org/10.3178/hrl.11.72>
- Nakaegawa T, Hibino K, Takayabu I. 2019a. Future climates in major seven cities in Russia under a global warming by a climate analogue approach. *Journal of Japan Society of Civil Engineers Series B* 75: I1045-I1050 (in Japanese with an English abstract).
- Nakaegawa T, Pinzón R, Fabrega, J, Cuevas JA, De Lima HA, Cordoba E, Nakayama K, Lao JIB, Melo AL, González DA, Kusunoki S. 2019b. Seasonal changes of the diurnal variation of precipitation in the upper Río Chagres basin, Panamá. *PLOS ONE*. <https://doi.org/10.1371/journal.pone.0224662>
- Pinzón RE, Hibino K, Takayabu I, Nakaegawa T, SOUSEI Theme-C modeling group. 2017. Virtually experiencing future climate changes in Central America with MRI-AGCM: Climate analogues study. *Hydrological Research Letters* 11: 106-113. <https://doi.org/10.3178/hrl.11.106>
- Pugh TAM, Muller C, Deryng JED, Folberth C, Olin S, Schmid E, Arneth A. 2016. Climate analogues suggest limited potential for intensification of production on current croplands under climate change. *Nature Communications* 7: 1-8. <https://doi.org/10.1038/ncomms12608>
- Randall D, Pan D. 1993. Implementation of the Arakawa-Schubert cumulus parameterization with a prognostic closure. In: *The representation of cumulus convection in numerical models* (Emanuel KA, Raymond DJ, Eds.). *Meteorological Monographs* 24: 137-144. [https://doi.org/10.1007/978-1-935704-13-3\\_11](https://doi.org/10.1007/978-1-935704-13-3_11)
- Ramírez-Villegas J, Lau C, Köhler AK, Signer J, Jarvis A, Arnell N, Osborne T. 2011. Climate Analogues – finding tomorrow’s agriculture today. Working Paper No. 12. CGIAR Research Program on Climate Change, Agriculture and Food Security (CCAFS), Cali, Colombia. Available at: [www.ccafs.cgiar.org](http://www.ccafs.cgiar.org) (accessed on September 1, 2016).
- Ramos da Silva R, Haas R. 2016. Ocean global warming impacts on the South America climate. *Frontiers in Earth Science* 4: 1-8. <https://doi.org/10.3389/feart.2016.00030>
- Solman S. 2013. Regional climate modeling over South America: A review. *Advances in Meteorology* 2013: 1-13. <https://doi.org/10.1155/2013/504357>
- Soteriades AD, Murray-Rust D, Trabucco A, Metzge M J. 2017. Understanding global climate change scenarios through bioclimate stratification. *Environmental Research Letters* 12: 1-10. <https://doi.org/10.1088/1748-9326/aa7689>
- Thiede B, Gra C, Mueller V. 2016. Climate variability and inter-provincial migration in South America, 1970-2011. *Global Environmental Change* 41: 228-240. <https://doi.org/10.1016/j.gloenvcha.2016.10.005>
- Williams JW, Jackson ST, Kutzbach JE. 2007. Projected distributions of novel and disappearing climates by 2100 ad. *Proceedings of the National Academy of Sciences of the United States of America* 104: 5738-5742. <https://doi.org/10.1073/pnas.0606292104>
- Yoshimura H, Mizuta R, Murakami H. 2015. A spectral cumulus parameterization scheme interpolating between two convective updrafts with semi-Lagrangian calculation of transport by compensatory subsidence. *Monthly Weather Review* 143: 597-621. <https://doi.org/10.1175/MWR-D-14-00068.1>