



Atmósfera

ISSN: 0187-6236

ISSN: 2395-8812

claudio.amescua@atmosfera.unam.mx

Universidad Nacional Autónoma de México

México

Wootton, Allen; Enríquez, Paula L; Navarrete-Gutiérrez, Darío
**Regional patterns of vegetation, temperature, and rainfall
trends in the coastal mountain range of Chiapas, Mexico**

Atmósfera, vol. 36, núm. 1, 2023, Enero, pp. 91-122

Universidad Nacional Autónoma de México

Ciudad de México, México

DOI: <https://doi.org/10.20937/ATM.53026>

Disponible en: <https://www.redalyc.org/articulo.oa?id=56582679009>

- ▶ [Cómo citar el artículo](#)
- ▶ [Número completo](#)
- ▶ [Más información del artículo](#)
- ▶ [Página de la revista en redalyc.org](#)

redalyc.org

Sistema de Información Científica Redalyc

Red de revistas científicas de Acceso Abierto diamante

Infraestructura abierta no comercial propiedad de la academia

Regional patterns of vegetation, temperature, and rainfall trends in the coastal mountain range of Chiapas, Mexico

Allen WOOTTON^{1*}, Paula L. ENRÍQUEZ¹ and Darío NAVARRETE-GUTIÉRREZ²

¹*Departamento de Conservación de la Biodiversidad, El Colegio de la Frontera Sur, 29290 San Cristóbal de las Casas, Chiapas, México.*

²*Departamento de Observación y Estudio de la Tierra, la Atmósfera y el Océano, El Colegio de la Frontera Sur, 29290 San Cristóbal de las Casas, Chiapas, México.*

*Corresponding author; email: allen.wootton@estudianteposgrado.ecosur.mx

Received: January 11, 2021; accepted: May 31, 2021

RESUMEN

Los cambios en el CO₂ atmosférico, la temperatura del océano y las condiciones de la vegetación regional en Mesoamérica indican posibles tendencias significativas en la temperatura y lluvias en la Sierra Madre de Chiapas, México. Ésta es una región importante para la flora y la fauna que podría verse afectada por las tendencias climáticas. Nuestro objetivo fue determinar si se habían producido tendencias climáticas en un periodo de 27 años en la Sierra Madre y las regiones de menor elevación entre 1990 y 2016, si estas tendencias son parte de cambios a más largo plazo (1960-2016 [57 años]) y la manera en que los cambios en las condiciones de gran escala y regionales/locales pueden influir en estas tendencias. En la Sierra Madre, las temperaturas diarias mínimas generales aumentaron, las temperaturas máximas disminuyeron y la mayoría de las tendencias significativas de temperatura media fueron más frías durante el periodo de 27 años. Tanto el inicio como el final de la temporada húmeda mostraron una tendencia a principios de año, y las lluvias de esta temporada aumentaron significativamente. Las tendencias no fueron significativas durante el periodo de 57 años en la Sierra Madre; sin embargo, en la región adyacente de la costa del Pacífico, continuaron las tendencias significativas de temperaturas más cálidas durante este periodo. Hubo una gran variación en los cambios de temperatura y precipitación entre regiones, y algunas tendencias locales fueron opuestas a los promedios regionales. Es posible que los procesos a gran escala de calentamiento en las temperaturas de la superficie del mar en la costa este de México, un cambio de la fase positiva a negativa en la Oscilación Decenal del Pacífico y los aumentos en el CO₂ atmosférico influyan en estas tendencias. A escala regional, los aumentos en la vegetación densa y la evapotranspiración desde 1990 pueden haber creado condiciones que favorezcan una retroalimentación positiva de mayor humedad oceánica y un ciclo de precipitación basado en la vegetación.

ABSTRACT

Changes in atmospheric CO₂, ocean temperature, and regional vegetation conditions in Mesoamerica indicate that significant trends in temperature and rainfall may have occurred in the Sierra Madre de Chiapas, Mexico. This is an important region for flora and fauna which could be affected by climate trends. We aimed to determine if and where climate trends had occurred in the Sierra Madre and lower elevation regions between 1990 and 2016 (27 years), if these trends were part of longer term (1960-2016 [57 years]) changes, and how changes in large-scale and regional/local conditions may be influencing these trends. In the Sierra Madre, overall minimum daily temperatures increased, maximum temperatures decreased, and the most significant mean temperature trends were cooler during the 27-yr period. Both the start and end of the wet season trended earlier in the year, and wet season rainfall increased significantly. Trends were not significant during the 57-yr period in the Sierra Madre; however, in the adjacent Pacific coast region, significant warmer temperature

trends continued during this period. Within regions, there was large variation in temperature and rainfall changes and some local trends were opposite to the regional averages. Large-scale processes of warming sea surface temperatures in the east coast of Mexico, a change from the positive to negative phase of the Pacific Decadal Oscillation and increases in atmospheric CO₂ may be influencing these trends. At the regional scale, increases in dense vegetation and evapotranspiration since 1990 may have created characteristics favoring a positive feedback of higher ocean-based moisture and vegetation-based precipitation cycling.

Key words: climate trends, evapotranspiration, remote sensing, Sierra Madre, vegetation changes.

1. Introduction

Changes since 1990 in influences on the climate of Mesoamerica, including atmospheric (Liverman and O'Brien, 1991; NOAA, 2020a), ocean temperature (Méndez-González et al., 2010) and land cover (Bray, 2009) indicate that significant regional climate trends may have occurred. Predictions or explanations of the causes of climate trends or changes in these regions has often been done based on modeling of global atmospheric conditions (Karmalkar et al., 2008), ocean temperature patterns (Pounds et al., 1999), or regional land use changes (Ray et al., 2006a; Barradas et al., 2010). However, as each tropical region has its own particular topographical characteristics, oceanic influence and land cover change circumstances, the use of local data is also necessary to determine spatial details in actual regional trends and validate models.

The three physiographical regions of the Mexican state of Chiapas closest to the Pacific Ocean (subsequently referred to as Pacific Chiapas) are the Central Depression, Pacific coastal plains (Coast) and Sierra Madre de Chiapas (Sierra Madre) (Fig. 1). The climate of this area is largely influenced by large scale circulation patterns, which determine the direction of airflow, onset and length of the wet season, and frequency and intensity of rainfall events (Hewitson and Crane, 1992). The influence of these large-scale processes on regional climates may depend on trends in sea surface temperatures (SST) (Aguilar et al., 2005), which have been increasing in the Gulf of Mexico and Caribbean Sea since 1965 and 1975, respectively, in the regions closest to the east coast of Mexico (Lluch-Cota et al., 2013).

Short term variations in temperature and precipitation patterns in Chiapas have been found to be weakly correlated with cycles of El Niño Southern Oscillation in the Pacific Ocean, although regional climate patterns varied in relation to this phenomenon (Golicher et al., 2006). Changes between the positive

and negative phase of the Pacific Decadal Oscillation (PDO) could also affect climate trends during a longer time period (Méndez-González et al., 2010).

In addition to ocean temperature trends, changes in amounts of atmospheric CO₂ may be influencing the climate of the region. Based on CO₂ modeling, Liverman and O'Brien (1991) predicted that if CO₂ doubled from the 1990 amount of 350 ppm, it would cause increases in air temperature and late dry season and summer precipitation, and decreases in precipitation at the end of the wet season and beginning of the dry season in parts of Chiapas. Since that time, atmospheric CO₂ has increased to 415 ppm in 2020 (NOAA, 2020a).

Regional changes to land vegetation characteristics within Pacific Chiapas may also be influencing the mountain climate of the Sierra Madre. Modeling done on the effect of forest cover change on cloud formation in Costa Rica found that scenarios with large amounts of lower elevation deforestation resulted in lower amounts of cloud cover and higher base cloud heights in mountain forests (Lawton et al., 2001; Ray et al., 2006a). These climatic changes were largely attributed to increases in sensible heat flux from cleared land and reductions in latent heat flux due to vegetation losses (Lawton et al., 2001; Ray et al., 2006a).

Forests and dense vegetation contribute large amounts of water vapor to the atmosphere through evapotranspiration (ET) and can affect regional rainfall through recycling of ocean-source moisture (Durán-Quesada et al., 2012). Changes in vegetation can affect this process (Sheil, 2018) with reductions in tropical forest cover, generally leading to reductions in regional rainfall (Chambers and Artaxo, 2017; Casagrande et al., 2018). The main factors which control ET in an environment are vegetation density and leaf production, and climatic variables such as temperature, irradiance, wind, soil water availability, and vapor pressure (Zhang et al., 2015).

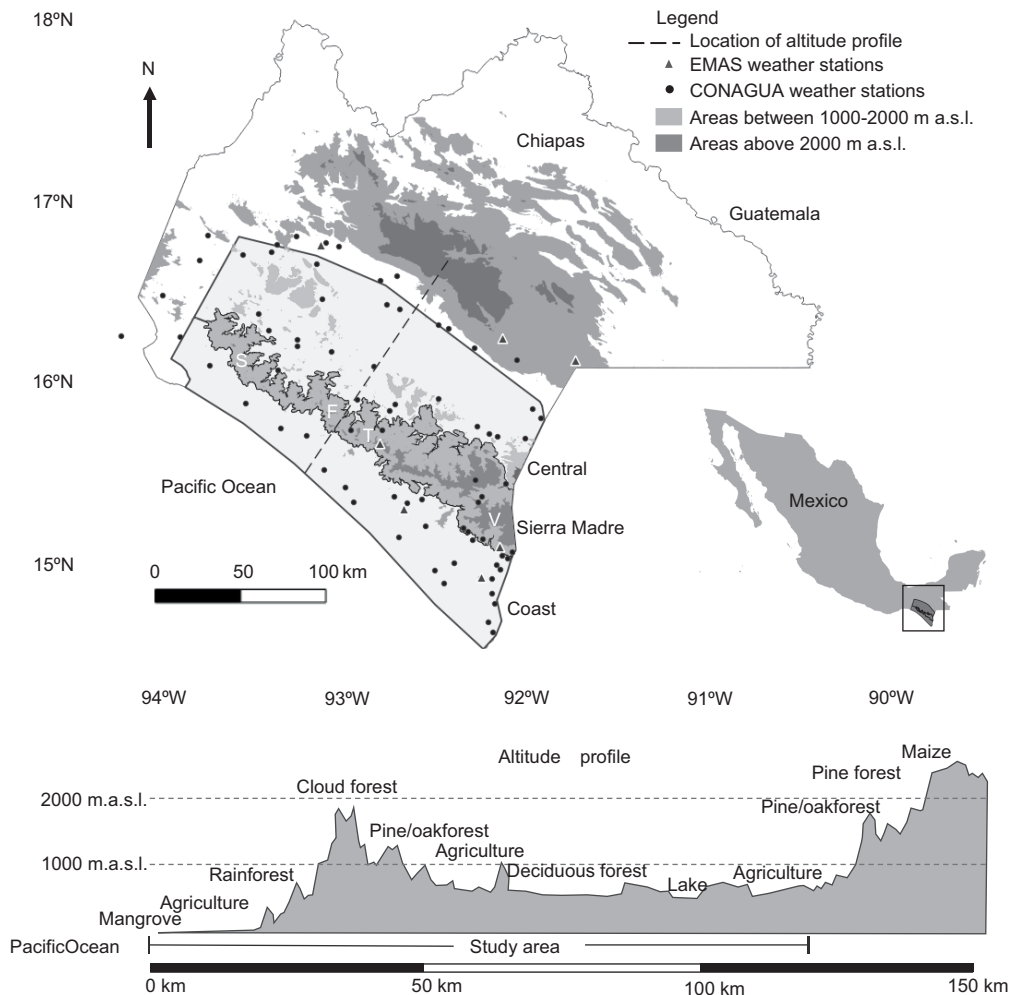


Fig. 1. Study area of the central depression, Sierra Madre, and coast regions of Chiapas, Mexico, locations of the weather stations, and an elevation profile from the Pacific Ocean to the central highlands of Chiapas. Letters S, F, T, and V indicate locations of the biosphere reserves La Sepultura (S), Fraileskana (F), El Triunfo (T), and Volcán Tacaná (V).

In regions which are mainly covered in vegetation, such as the study area, the process of transpiration contributes to the greatest portion of ET (Ramón-Reinozo et al., 2019), although evaporation from leaf surfaces can contribute to a significant portion (Ballinas et al., 2015). In a watershed in the Sierra Madre, Castro-Mendoza et al. (2016) estimated that up to 64% of precipitation may be re-cycled to the atmosphere through ET.

Changes in vegetation cover may also affect local trends in temperature and rainfall, however the effects of this in tropical regions is still unclear. In the Lacandon rainforest in eastern Chiapas, maximum

daily temperatures generally decreased in areas where there has been deforestation, but there was no relation between local rainfall and forest cover changes (O'Brien, 1998). In Guatemala, areas with greater deforestation within similar forest types had lower amounts of rainfall during the dry season (Ray et al., 2006b). The determination of links between vegetation changes and climate trends are especially important in tropical regions such as Chiapas, where land use change has been occurring rapidly (Solórzano et al., 2003).

These measured or potential changes in oceanic, atmospheric, and regional land cover conditions

indicate the potential for climatic change in Pacific Chiapas. Therefore, this study examines the actual effects of these changes in large-scale and regional climatic influences on temperature and rainfall trends in this area, especially the Sierra Madre mountain range, from 1990 to 2016.

The Sierra Madre is the main source of water which flows into the Grijalva River system to produce a large quantity of Mexico's power from dams and is an important source of freshwater resources (Jones et al., 2018). It is also a major coffee-producing region, which may be affected by changes in climate (Schroth et al., 2009). Its ecological importance has been recognized through the establishment of the biosphere reserves El Triunfo, La Sepultura and Volcán Tacaná. These reserves contain populations of flora and fauna which may be affected by long term changes (Rojas-Soto et al., 2012), or cyclical (~30-yr) trends in the mountain climate (Pounds et al., 1999; Lister and García, 2018). Various ecological studies were conducted during the establishment of the reserves in the early 1990's (e.g., Long and Heath, 1991; Solórzano et al., 2000), and a better understanding of climatic trends since 1990 may provide a useful reference to help explain longer term ecological trends in this region (González-García et al., 2017).

The aims of this study were to determine if and where significant climate trends have occurred from 1990-2016 in Pacific Chiapas, if these were cyclical (~30-yr) or part of longer-term (~60-yr) climate changes, and how regional and larger scale processes may be influencing these trends or changes. Specifically, the first objective was to determine spatial patterns of temperature and rainfall changes and locations of significant trends from 1990-2016 in the Sierra Madre to compare with those of the adjacent lowland regions. The second objective was to determine if significant trends during the 27-yr period were part of a longer-term (1960-2016) trend in locations where data were available. The third objective was to relate climate trends to larger scale and regional climatic influence changes during similar time periods.

As mentioned, various studies have described how large-scale oceanic (Hewitson and Crane, 1992) and atmospheric processes (Liverman and O'Brien, 1991) may influence the climate of Pacific Chiapas, and we incorporated these findings into the discussion of the

determined climate trends. However, to our knowledge, there have been no previous studies which have included vegetation characteristics and changes in relation to climate trends in this region. Therefore, our third objective was focused on the determination of local and regional changes in vegetation and ET from 1990-2020, which may also be influencing climate trends in Pacific Chiapas and particularly in the mountain regions.

2. Methods

2.1 Study area and time period

Pacific Chiapas (Fig. 1) is a topographically and ecologically complex region where mountainous and coastal terrain create conditions for the growth of many different forest types including mangroves, rainforests, tropical deciduous, oak-pine, cypress, fir, and cloud forests (INEGI, 2017; Fig. 1). Leaf presence is especially seasonal in the tropical deciduous forests (Gómez-Mendoza et al., 2008; Table I), but also in the more evergreen mountain forests where ET can change greatly throughout the year (Ballinas et al., 2015).

Similar to other regions of southern Mexico, the majority of rainfall falls between June and September (Brito-Castillo, 2012). The timing of the onset of the wet season depends strongly on the northward movement of the Intertropical Convergence Zone (ITCZ), which causes trade winds to increase in intensity and bring moist air from the Caribbean and Gulf of Mexico (Brito-Castillo, 2012). During the summer and early fall, tropical cyclones originating from the Caribbean Sea and the Pacific Ocean can bring large amounts of rainfall (García, 1974). Winter rainfall is less and is affected by cold winds originating in central North America which travel over the Gulf of Mexico, collecting humidity (García, 1974). Low pressure systems in northern Mexico also bring in moist air from the Pacific during winter (Brito-Castillo, 2012). Amounts of yearly rainfall (1990-2016 averages) are greatest in the Sierra Madre (Finca A. Prusia weather station: 2860 mm yr⁻¹, with 85% of rainfall during the wet period from June until October), followed by the Coast (Tapachula: 2076 mm yr⁻¹, 78% during the wet period), and lower amounts in the Central Depression (Villaflora: 1222 mm yr⁻¹, 86% during the wet period) (Fig. 2).

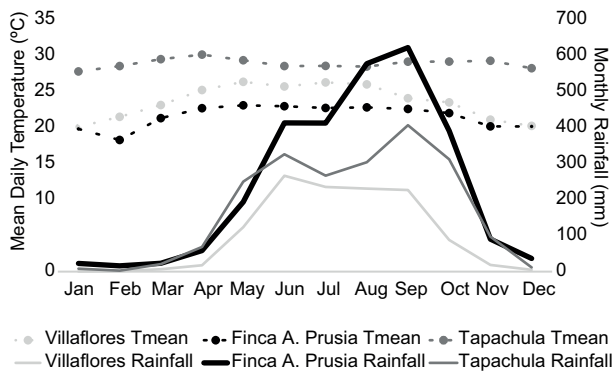


Fig. 2. Monthly averages of mean daily temperature (T_{mean}) and rainfall during the 1990-2016 period in the central depression (Villaflores weather station), Sierra Madre (Finca A. Prusia), and coast (Tapachula) regions.

Daytime (maximum) temperatures are highest in this region just before the wet season due to higher latent heat transfer and radiative forcing (Aguilar et al., 2005). July is often the month with the highest nighttime (minimum) temperatures due to the insulation caused by higher cloud cover (Aguilar et al., 2005). Mean daily temperatures (1990-2016 averages) are highest in the coast (Tapachula, 29 °C), and lower at higher elevations in the Central Depression (Villaflores, 24 °C) and the Sierra Madre (Finca A. Prusia, 22 °C) (Fig. 2). In addition to ocean moisture sources, temperature and rainfall patterns in Pacific Chiapas are also influenced by topography and vegetation characteristics (Hewitson and Crane, 1994; Ray et al., 2006b).

Analysis of data began from 1990 to include greater spatial detail of climate trends with the inclusion of larger numbers of weather stations, which began collecting data around this year; and to provide a climatic reference for comparing ecological changes in the Sierra Madre. Comparisons of 1990-2016 trends were also done for a longer-term (57-yr) period using data from weather stations where significant 1990-2016 trends were determined and data were available since 1960.

Temperature and rainfall data were obtained from weather stations of the Comisión Nacional del Agua (National Water Commission) located within the study area (Conagua, 2018) (Fig. 1 and Table S-I in the supplementary material). Because of a lack of complete data in some weather stations and years with large amounts of cloud cover in Landsat satel-

lite images, the analysis of land cover, NDVI, and potential ET was done using data from a range of years. Satellite images from 1987-1993 were used to represent the year 1990 and images and data from 2015-2020 to represent 2020. Rainfall and temperature trend analysis was done from 1990 to 2016 for most stations, or to 2012 or 2015 where more recent data were not available (Table S-II).

2.2 Temperature and rainfall trends

Trends and changes in average minimum (T_{min}), mean (T_{mean}), and maximum (T_{max}) daily temperature between 1990-2016 were determined using data from 55 weather stations located within the study area (Table S-I). Months were grouped into three seasons representing the main yearly changes in temperature: dry-cool (November-February), dry-hot (March-May), and wet (June-October). Temperature data for each season were obtained by averaging data of the months within each group. Differences in temperature were generally greater between months within a season than between adjacent years of the same month. Therefore, if data for a month was missing, they were estimated by calculating the average of the closest years (for up to one or two years) where data were available. This was done to avoid cooler or warmer month biases within the seasonal monthly averages where some monthly data were missing. If a station was missing more than 15% of monthly data between 1990-2016, or errors were evident (e.g., sudden breaks between temperature trend lines), it was not included in the analysis.

A graph of temperature data was done for each month and weather station and a least squares regression line was applied from 1990 to 2016. The average daily temperature value of the regression line value in 2016 was subtracted from that of 1990 to determine the change between these years. These data were uploaded into the GIS software QGIS v. 3.14 as vector points, and a spatial analysis of temperature changes was done using the Triangulated Irregular Network (TIN) method (Mitas and Mitasova, 1999) in QGIS for each season. This was chosen as the method to best represent the interpolation of the spatial changes in data which were largely influenced by topography (Velásquez et al., 2011).

Using climatic records with gaps in time series creates some uncertainty when assessing trends

(Mardero et al., 2019). To correct for this, Mardero et al. (2019) interpolated data from nearby weather stations in the low elevation Yucatan Peninsula to complete rainfall records. Interpolation was also attempted in our study for stations in the Sierra Madre with missing data (Table S-II). However, results of this interpolation were inaccurate due to the large variation in rainfall between stations in the topographically complex mountain range. Therefore, the analysis of rainfall trends was done using only available data (Tables S-II and S-III).

Monthly rainfall changes between 1990 and 2016 were determined using the same method to calculate temperature changes, with data from 76 weather stations. Significant trends ($p < 0.05$) in temperature and rainfall were determined for three periods: 1960-1989, 1960-2016 and 1990-2016 (where data was available) using the Mann-Kendall test in the Excel extension program XLSTAT 2019. This test has commonly been used to detect significant trends in climate data. It has the assumption that data records are independent, but these data do not need to be normally distributed. As it is non-parametric, results of the test are not influenced by outlier values (Ahmad et al., 2015). Another advantage of using the Mann-Kendall test is that trends can still be determined even if a time series has missing data.

The start, end, and length of the wet season was calculated locally (rather than with regional averages) using daily rainfall data from 65 weather stations. Specifications of the start of the wet season were modified from a similar study done for the Yucatan Peninsula (Mardero et al., 2019). These were: (1) the first day of the year with measurable rainfall (≥ 1 mm) followed by at least another day of rainfall within the next five days for a total of at least 20 mm of rainfall; and (2) that within the 30 days following this first day of rainfall, there was no dry spell of seven or more consecutive days without rainfall. The end of the wet season was calculated using these specifications in reverse, and the length of the wet season was calculated as the number of days between the start and the end of the wet season. Changes in the start and end of the wet season were determined by applying a regression line to a graph of the start and end dates and subtracting the values at the years 2016 and 1990 from the regression line.

2.3 Vegetation classification

Analysis of the spatial extent of forest and other vegetation cover in the years 1990 and 2020 was done to determine vegetation changes which could partially explain changes in ET, temperature, and rainfall in the study time period. The spatial extent of vegetation types was determined within the study area from the classification of Landsat level-2 atmospherically corrected images (Table S-IV). Classification was done from images captured during the dry season in order to determine vegetation types based on their density and leaf seasonality characteristics which could affect seasonal ET (Glenn et al., 2011; Ballinas et al., 2015). Images covering the study area, captured during 1987-1993 (Landsat 5) and 2017-2020 (Landsat 8) and which had less than 10% cloud cover, were downloaded from the USGS Earth Explorer website (USGS, 2020). The green, red and infrared bands (bands 2, 3, and 4 of Landsat 5, and bands 3, 4, and 5 of Landsat 8) were combined in QGIS, and these resulting images were uploaded into the land classification software Multispec v. 3.4.

Supervised classification of the image was done in this program to determine the land cover classes: evergreen forest (primary and secondary coniferous, cloud, and rainforest), mangrove, palm plantations, semi-deciduous forest (oak, pine-oak, fruit tree), deciduous forest, scrub, irrigated agriculture or short vegetation (often wetlands), grassland or seasonal agriculture, areas without vegetation (bare soil, rock, urban areas), water (lakes, rivers, coastal waters within the study area), and cloud cover (Table II). Evergreen forests, mangroves and palm plantations were determined as separate classes for areas dominated with tree cover which appeared as darker red in the combination of satellite images. As these evergreen forest types had similar spectral characteristics, images covering the coast and coastal plains were classified separately from the mountain and inland areas to avoid an erroneous classification of mangroves or palm plantations within the entire study area.

Semi-deciduous forest appeared as fainter dark red, deciduous forest as darker brown and scrub as lighter brown. Irrigated agriculture or wetlands appeared as lighter red or darker pink, and non-irrigated fields or soil as light grey (Fig. 3). Coastal wetland and coffee plantation subclasses were difficult to distinguish from the irrigated agriculture/

Table I. Elevation range of vegetation types within the study area according to INEGI* (2017) classification, which were included in the classification of the general vegetation type.

General vegetation type	INEGI classification	Elevation range (masl)
Evergreen forest (higher elevation)	Fir (<i>Abies</i> sp.) forest	2000-2900
	Cloud forest	700-4000
	Pine forest	500-2500
Evergreen forest (lower elevation)	Secondary tall rainforest	200-1400
	Riparian forest	600-700
	Riparian rainforest	0-700
Shade coffee plantation	Permanent agriculture	300-2000
Semi-deciduous forest	Pine-oak forest	800-2500
	Oak-pine forest	400-1900
	Semi-deciduous forest	400-1500
	Oak forest	600-1200
	Fruit tree plantations	10-25
	Palm forest	0-5
Deciduous forest	Deciduous tropical forest	300-1700
	Low spiny forest	0-10
Mangrove	Mangrove	Sea level
Palm plantations	Permanent agriculture	10-50
Scrub	High mountain vegetation	3500-4000
	Temporary agriculture	400-2500
	Herbaceous vegetation	550-850
	Savannah	30-800
	Cleared vegetation	50-250
Short vegetation	Irrigated agriculture	5-700
	Coastal dune vegetation	Sea level
	Coastal wetland (Tular)	Sea level
	Coastal wetland (Popal)	Sea level
Grassland/seasonal agriculture	Grassland	0-1000
	Temporary agriculture	0-900

*Instituto Nacional de Estadística y Geografía.

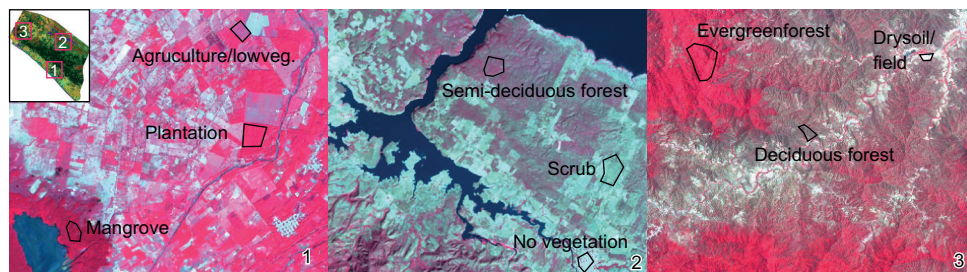


Fig. 3. Examples of vegetation types used for classification in the combination of the green, red, and infrared bands of the satellite images in the (1) coast, (2) central depression, and (3) Sierra Madre regions of Chiapas, Mexico.

short vegetation and evergreen forest classes in the satellite images. Therefore, INEGI series 6 vegetation classifications (INEGI, 2017) corresponding to these vegetation types were used to determine the spatial extent of these subclasses (Table I). Validation of the 2020 vegetation classes was done using 967 reference points randomly placed within the study area. The vegetation classification corresponding to each of these points was compared with vegetation types in higher resolution Google Earth images captured during the dry season from 2017 to 2020. Errors of commission and omission were calculated in a confusion matrix of these validation points (Table III).

2.4 Estimation of evapotranspiration

Various methods have been developed to estimate ET from specific vegetation types to ET at a regional scale (Fisher et al., 2011). The purpose of estimating ET in this study was not to determine the most accurate values for each vegetation type, but rather to determine the processes that have occurred in the study region which may be influencing ET, and as a result, atmospheric water vapor and orographic precipitation in the Sierra Madre. These included changes in temperature, vegetation types and cover, and seasonal changes in leaf cover which is largely influenced by rainfall patterns (Gómez-Mendoza et al., 2008).

Table II. Areas of vegetation types in 1990 and 2020 within the three physiographic regions of the study area (central depression, Sierra Madre, coast), and these three regions together (Pacific Chiapas). The percent of regional area of each land cover is shown next to the area values.

Vegetation type	Year	Area (in ha) and percent (between parentheses) of each vegetation type			
		Central depression	Sierra Madre	Coast	Pacific Chiapas
Evergreen forest	1990	43 663 (3)	328 565 (60)	152 917 (17)	525 145 (19)
	2020	708 66 (6)	351 099 (64)	172 090 (19)	594 055 (22)
Semi-deciduous forest	1990	238 366 (19)	128 683 (24)	144 230 (16)	511 279 (19)
	2020	251 561 (20)	121 921 (22)	187 219 (21)	560 701 (21)
Mangrove	1990	0	0	28 549 (3)	28 549 (1)
	2020	0	0	36 958 (4)	36 958 (1)
Palm plantations	1990	0	0	0	0
	2020	0	0	7 152 (1)	7 152 (<1)
Deciduous forest	1990	331 660 (26)	29 575 (5)	15 932 (2)	377 167 (14)
	2020	258 537 (20)	15 275 (3)	21 178 (2)	294 990 (11)
Scrub	1990	413 594 (32)	13 193 (2)	73 593 (8)	500 380 (18)
	2020	453 043 (35)	36 996 (7)	144 389 (16)	634 428 (23)
Agriculture/short vegetation/wetland	1990	31 898 (2)	23 136 (4)	214 166 (24)	269 200 (10)
	2020	13 837 (1)	6 155 (1)	116 486 (13)	136 478 (5)
Grassland/seasonal agriculture	1990	168 002 (13)	15 914 (3)	222 593 (25)	406 509 (15)
	2020	185 263 (14)	10 137 (2)	149 174 (17)	344 574 (13)
No vegetation	1990	5062 (<1)	897 (<1)	6458 (1)	12 417 (<1)
	2020	5828 (<1)	928 (<1)	16 321 (2)	23 077 (1)
Water	1990	50 753 (4)	0	27 839 (3)	78 592 (3)
	2020	43 723 (3)	0	30 129 (3)	73 852 (3)

Table III. Confusion matrix of 967 points comparing the vegetation types classified from the 2020 Landsat images (Classification) with the validation in Google Earth (Reference).

Classification	Reference										Error of omission (%)
	E	SD	D	Scrub	SV	Grass	No-V	Man	Palm	Total	
E	159	5	0	5	4	0	0	0	17	190	16.3
SD	11	120	0	11	8	1	0	7	8	166	27.7
D	0	11	61	12	0	2	0	0	0	86	29.1
Scrub	0	8	3	170	1	24	2	1	1	210	19.1
SV	2	2	0	3	93	1	0	3	2	106	12.3
Grass	0	1	0	8	1	126	1	0	0	137	8.0
No-V	0	0	0	0	2	0	9	3	0	14	35.7
Man	0	0	0	0	0	0	0	40	0	40	0
Palm	0	0	0	0	0	0	0	0	18	18	0
Total	172	147	64	209	109	154	12	54	46	967	
Error of omission (%)	7.6	18.4	4.7	18.7	14.7	18.2	25.0	25.9	60.9		

E: evergreen forest; SD: semi-deciduous forest; D: deciduous forest; SV: irrigated agriculture/short vegetation; Grass: grassland or seasonal agriculture ; No-V: no vegetation; Man: mangrove; Palm: palm plantation.

Potential ET (PET) is a calculation of the potential amount of water vapor re-entering the atmosphere through ET from the land surface and plants (Xiang et al., 2020). This is based on mainly climatic variables, whereas actual ET is also influenced by vegetation characteristics (Allen et al., 1998). To estimate actual ET in the study area, a method incorporating PET calculations with regional vegetation index values was used (Glenn et al., 2011). This method has been used in other tropical mountain environments (Ramón-Reinozo et al., 2019).

2.4.1 Step 1

We first determined the most appropriate PET calculation method to use. The Penman Monteith (PM) method is often used as the standard to calculate PET but this requires a larger number of environmental data inputs which are not available in most weather stations in Chiapas. Previous analysis comparing the results of PET methods requiring data which are available from all stations in Chiapas with the PM method was done using data from seven weather stations of the automatic weather stations (EMAS, for their acronym in Spanish) located within or near the study area (Table S-V) (Conagua, 2020). These stations collected all the variables required for the comparisons of methods. On

average, the Turc method (Turc, 1961) produced values closest to the PM value, especially in the mountain areas (Table S-V), therefore this method was chosen to calculate regional PET.

2.4.2 Step 2

PET was calculated with data from 49 weather stations within the study area. Estimations of temperature at three additional locations, based on temperatures or interpolations of temperatures recorded at nearby weather stations at similar elevations in the Sierra Madre (El Triunfo, El Porvenir; Table S-I) were also included to produce a more accurate interpolation of PET at higher elevation areas (Sierra Madre 1, 2, and 3; Table S-I). The average long-term values of T_{\min} , T_{mean} , and T_{\max} were calculated for each station using the value of the least squares regression line at the years 1990, 2005, and 2020. Values were calculated for these years for the same seasons as the temperature trend data: dry-cool representing the wet to dry transition season, dry-hot representing the dry season, and the wet season. PET values calculated for these years and seasons corresponded with the vegetation image layers created (described in the next steps). Raster layers of PET were created using the TIN method in QGIS.

2.4.3 Step 3

The Normalized Difference Vegetation Index (NDVI) was used as vegetation index to include vegetation characteristics in the ET estimation. Satellite images from the transition, dry, and wet seasons captured within three years of 1990, 2005, and 2020 were used to create the NDVI images (Table S-IV).

2.4.4 Step 4

A second VI formula was used to standardize the images. In the NDVI images, the most similar vegetation cover to the reference vegetation used to represent conditions where PET would be equal to actual ET was irrigated agriculture (mainly sugar cane in the Coast region) (Aguilar-Rivera et al., 2012), which had an average NDVI value of 0.82. Therefore, this value was used as the NDVI reference value ($NDVI_{ref}$) so that PET would be representative of the estimation of ET in this vegetation type. Denser vegetation types such as evergreen forest would have a higher estimate of ET and seasonal leaf producing vegetation types such as scrub, fields or deciduous forest during the dry season would have a lower estimate. This is representative of the natural conditions in similar mountain regions (Holwerda et al., 2013). $NDVI_{min}$ is the lowest NDVI value in the image. Zero was used for this value.

$$VI = 1 - \frac{(NDVI_{ref} - NDVI)}{(NDVI_{ref} - NDVI_{min})} \quad (1)$$

2.4.5 Step 5

Estimation of daily ET was then done by multiplying the PET layer obtained from the Turc calculation (step 2) and the Vegetation Index (VI) layer (step 4), which replaces the standard crop coefficient in agricultural ET estimations in order to represent natural vegetation types (Glenn et al., 2011).

$$ET = PET \times VI \quad (2)$$

INEGI series 6 polygons corresponding to the vegetation classes in this study (Table I) were used to separate ET estimations by vegetation type from the raster layers of the regional ET estimations. These raster cuts were used to estimate the mean and standard deviation of ET for each vegetation type (Table IV).

2.5 Local climate and vegetation change relations

O'Brien (1998) determined that local temperature trends were related to a higher degree with forest cover change within a radius of between 0.5 and 3 km from weather stations in the Lacandon rainforest in Chiapas, with the relationship less evident as radius sizes increased or decreased from this range. Therefore, in our study, changes in forest cover and NDVI between 1990 and 2020 during the dry season were calculated within a 2 km radius of each station where there was a significant T_{mean} trend. At these locations, the correlation between forest cover

Table IV. Estimations and standard deviations of evapotranspiration (ET) (mm/day) from land cover types in 1990 and 2020 during the transition from wet to dry, dry, and wet seasons.

Land cover types	1990 transition	1990 dry	1990 wet	2020 transition	2020 dry	2020 wet
High elevation evergreen	3.22 ± 0.52	3.86 ± 0.87	3.97 ± 0.92	3.04 ± 0.54	3.87 ± 0.77	3.54 ± 1.05
Low elevation evergreen	3.24 ± 0.55	3.69 ± 0.92	4.10 ± 0.75	3.12 ± 0.51	3.84 ± 0.84	3.89 ± 0.88
Semi-evergreen forest	2.88 ± 0.59	3.02 ± 0.77	4.05 ± 0.86	3.02 ± 0.55	3.39 ± 0.85	4.05 ± 0.88
Shade coffee plantation	3.52 ± 0.47	4.10 ± 0.72	4.01 ± 0.62	3.48 ± 0.43	4.26 ± 0.58	3.95 ± 0.94
Mangrove	3.67 ± 0.74	3.93 ± 0.94	4.05 ± 1.01	3.75 ± 0.66	4.50 ± 0.93	4.12 ± 0.75
Deciduous forest	2.36 ± 0.60	2.26 ± 0.56	4.02 ± 0.82	2.84 ± 0.59	2.95 ± 0.76	4.33 ± 0.80
Scrub	2.53 ± 0.68	2.63 ± 0.86	3.93 ± 0.75	2.65 ± 0.62	2.91 ± 0.86	3.99 ± 0.84
Coastal wetland	3.48 ± 0.51	3.43 ± 1.06	3.93 ± 0.66	3.27 ± 0.58	4.36 ± 0.77	4.29 ± 0.78
Irrigated agriculture	3.12 ± 0.84	2.94 ± 1.03	4.03 ± 0.57	3.12 ± 0.74	3.45 ± 1.10	3.98 ± 0.89
Grassland or seasonal agriculture	2.28 ± 0.61	1.99 ± 0.51	3.71 ± 0.84	2.28 ± 0.61	2.39 ± 0.72	4.01 ± 0.78
Oil palm plantation				3.76 ± 0.60	4.38 ± 0.92	4.76 ± 0.68

(evergreen, semi-deciduous, and deciduous) and NDVI changes with temperature change was tested using Spearman's correlation test.

3. Results

3.1 Temperature trends and changes

The average T_{\min} in the Sierra Madre increased from 1990 to 2016 in all three seasons. In the dry-cool season T_{\min} increased by 0.2 ± 2.2 °C, in the dry-hot season by 0.4 ± 1.7 °C, and in the wet season by 0.5 ± 1.9 °C. During the same period, T_{\max} decreased during the dry-cool season by 1.8 ± 1.2 °C, in the dry-hot season by 1.2 ± 1.3 °C, and in the wet season by 1.9 ± 1.3 °C. The average T_{mean} also decreased during the dry-cool season by 0.8 ± 1.4 °C, 0.2 ± 1.3 °C during the dry-hot season, and 1.9 ± 1.3 °C during the wet season.

In the lower elevation regions, there was a similar pattern with increases in T_{\min} during the dry-cool (coast: 1.1 ± 1.23 °C), dry-hot (coast 1.3 ± 1.1 °C; central depression: 0.6 ± 1.6 °C), and wet seasons (coast: 1.5 ± 1.1 °C; central depression: 0.7 ± 1.8 °C). The exception was the 0.5 ± 1.6 °C decrease in T_{\min} during the dry-cool season in the central depression. There was also a similar pattern to the Sierra Madre in average T_{\max} change with decreases in the lower elevation regions during the dry-cool (central depression: 1.6 ± 1.6 °C), dry-hot (coast: 0.3 ± 1.1 °C; central depression: 0.4 ± 1.9 °C), and wet seasons (coast: 0.4 ± 1.1 °C; central depression: 1.0 ± 1.4 °C). There was no change in average T_{\max} during the dry-cool period in the coast region.

Within Pacific Chiapas, there were 48 significant trends (Mann-Kendall $p < 0.05$) determined for T_{mean} between 1990 and 2016 during the three seasons. Of these, 25 were positive (warmer) trends and 23 were negative (cooler) trends (Fig. 4, Table S-VI). Seventeen of these significant trends in temperature were from changes of 2.5 °C or greater. Of these, five were cooler trends and 12 were warmer. Of the 10 significant temperature trends shown in the Sierra Madre, only one was warmer during the dry-hot season.

Where data were available between 1960 and 2016, five significant earlier-period (1960-1989) trends contrasted in direction (cooler/warmer or reverse) with later- period (1990-2016) trends at the same weather station. All significant 1990-2016

temperature trends (almost all warmer) in the coast were also significant during the longer 1960-2016 period, whereas significant cooler 1990-2016 trends in the Sierra Madre were not significant during the period since 1960 (Table S-VII).

3.2 Rainfall trends and changes

There was little change in monthly rainfall in the Sierra Madre during most of the dry season from January until April. In May, which is typically at the end of the dry season, rainfall increased greatly, and this trend continued during the wet months from June until September. At the end of the wet season in October, areas within the El Triunfo and Volcán Tacaná biosphere reserves in the Sierra Madre showed dryer trends and La Sepultura, Frailescana, and the southeast region of El Triunfo, wetter trends. The months of the early dry season in November and December had average rainfall decreases between 1990 and 2016 (Fig. 5). There was a similar, but less extreme pattern of regional averages of monthly rainfall changes in the lower elevation regions, however the largest increases in rainfall occurred at the end of the wet season during the month of October (104 ± 117 mm) in the coast region (Figs. 5 and S-1).

Twenty-one significant monthly rainfall trends (Mann-Kendall $p < 0.05$) were determined within Pacific Chiapas. All were positive (wetter) and occurred during the months from the end of the dry season/beginning of the wet season in May until the end of the wet season in October. There were negative (drier) trends recorded at some of the weather stations within the study area, however these were non-significant. Many of the significant trends were registered within the Sierra Madre or coastal foothills of the Sierra below 1000 m, and values of changes in monthly rainfall ranged from 110 to 650 mm. The greatest increases in monthly rainfall occurred in some of the coastal areas during the months of June and September, and in the Sierra Madre each month from June to October (Table S-III). Of these, only one significant rainfall trend was also significant during the 57-yr period from 1960-2016 at the Metapa de Domínguez weather station in the coast region, with a wetter trend for the month of September (Fig. 6, Table S-VII).

The average wet season began 7.5 ± 10.6 days earlier between 1990 and 2016 in the Sierra Madre,

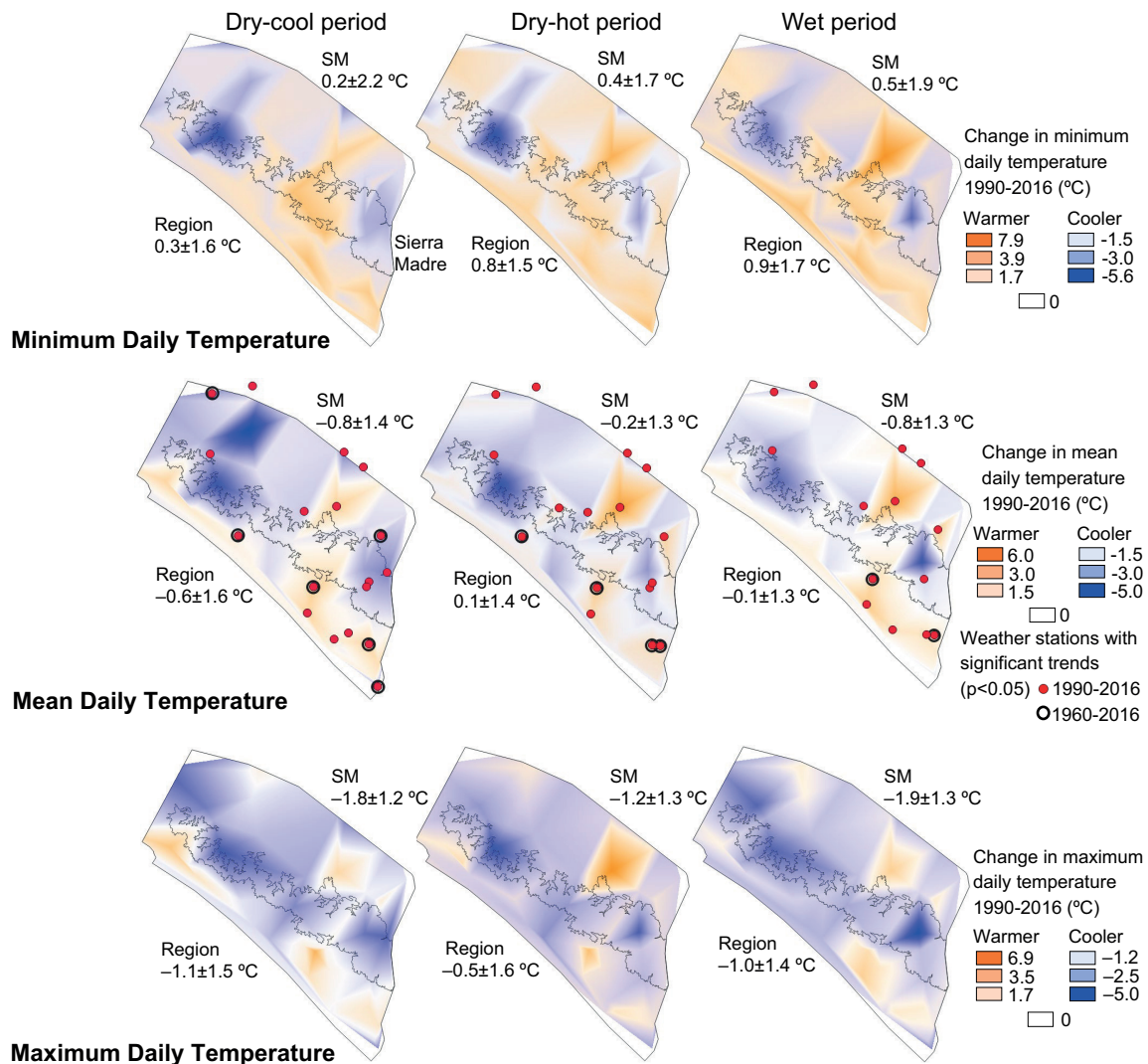


Fig. 4. Average daily temperature change between 1990 and 2016 in the central depression, Sierra Madre, and coast regions of Chiapas, Mexico. Cooler temperature changes are shown in blue and warmer changes in orange. Red points indicate locations of weather stations with significant trends in average daily temperature. The mean and standard deviation of temperature changes within the study area are written below “Region” on the map. Mean and standard deviation within the Sierra Madre (SM) region are written below “SM”.

which corresponds to the wetter trend in rainfall during May. The average end of the wet season was also earlier by 4.9 ± 8.4 days, due to dryer trends in October in some parts of the Sierra Madre. On average, the length of the wet season increased by 2.7 ± 13.6 days, although this varied greatly with the central portion of the Sierra Madre increasing, and the southeast portion near to Volcán Tacaná decreasing in length (Fig. 7). The average wet season also began

earlier in the lower elevation regions (coast: 6.2 ± 13.2 days; central depression: 7.8 ± 15.1 days) but, in contrast to the Sierra Madre, ended later (coast: 1.1 ± 9.4 days; central depression: 4.2 ± 10.5 days).

3.3 Changes in vegetation types and evapotranspiration

The difficulty in determining boundaries between vegetation types with similar characteristics is

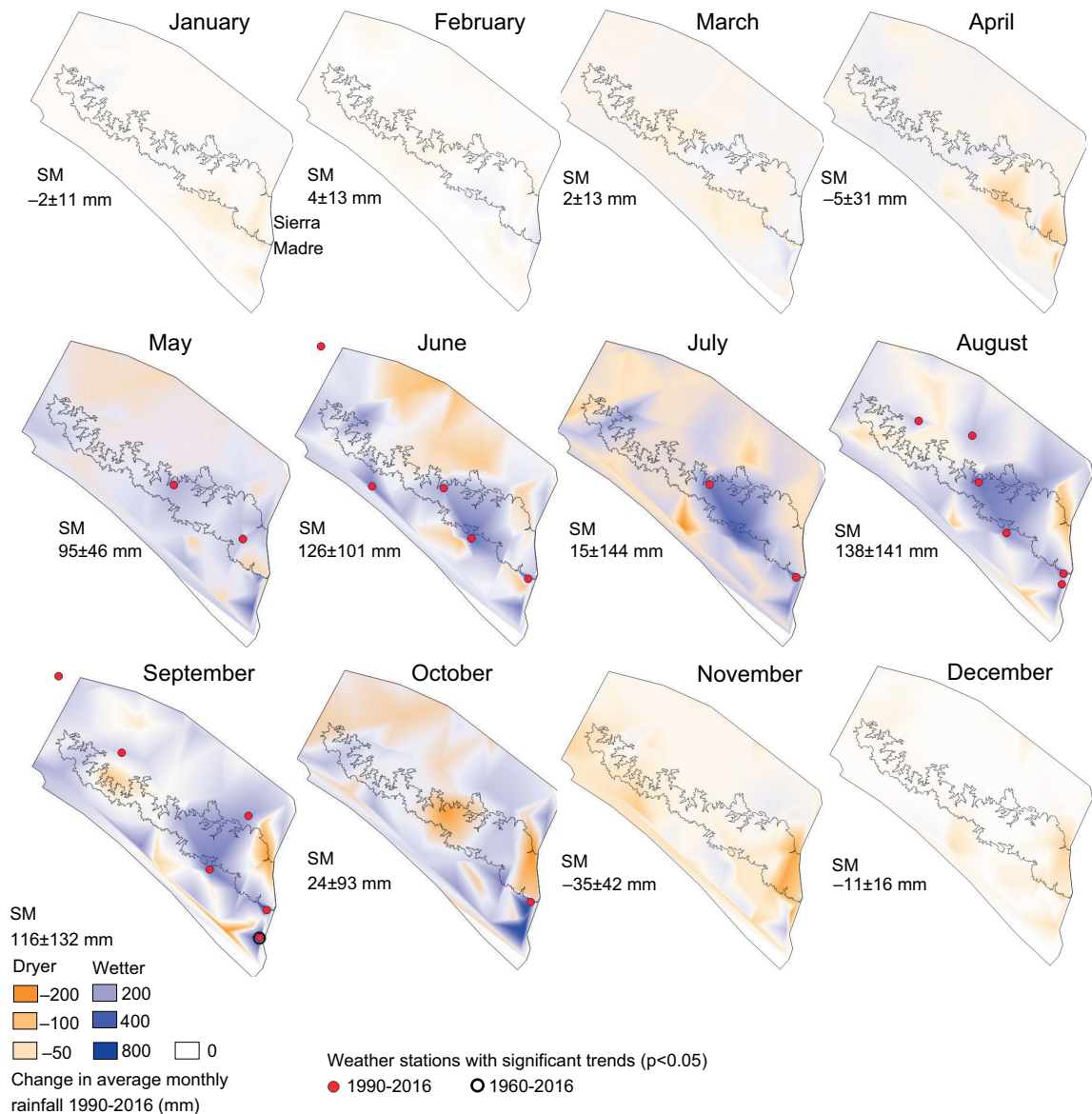


Fig. 5. Changes in monthly rainfall between 1990 and 2016 in the central depression, Sierra Madre, and coast regions of Chiapas, Mexico. Wetter changes are shown in blue and dryer changes in orange. Red points indicate locations of weather stations with significant trends in monthly rainfall. The mean and standard deviation of monthly rainfall changes within the Sierra Madre (SM) region are written below “SM” on the map.

shown in the results of the confusion matrix of the vegetation classification validation (Table III). There was an overclassification of evergreen forest within the palm plantations and mangrove types due to the similarities of these forests, especially with the 30 m² resolution of Landsat images. There was also a higher overlap in classification of deciduous vegetation with

gradients between types. The overall accuracy of the 2020 vegetation classification was 82%.

Between 1990 and 2020, the combined area of evergreen and semi-evergreen forest types (cloud forest, rainforest, oak, pine and other coniferous forests, fruit tree, palm plantations, and mangroves) increased in all three regions. In the central depression, these

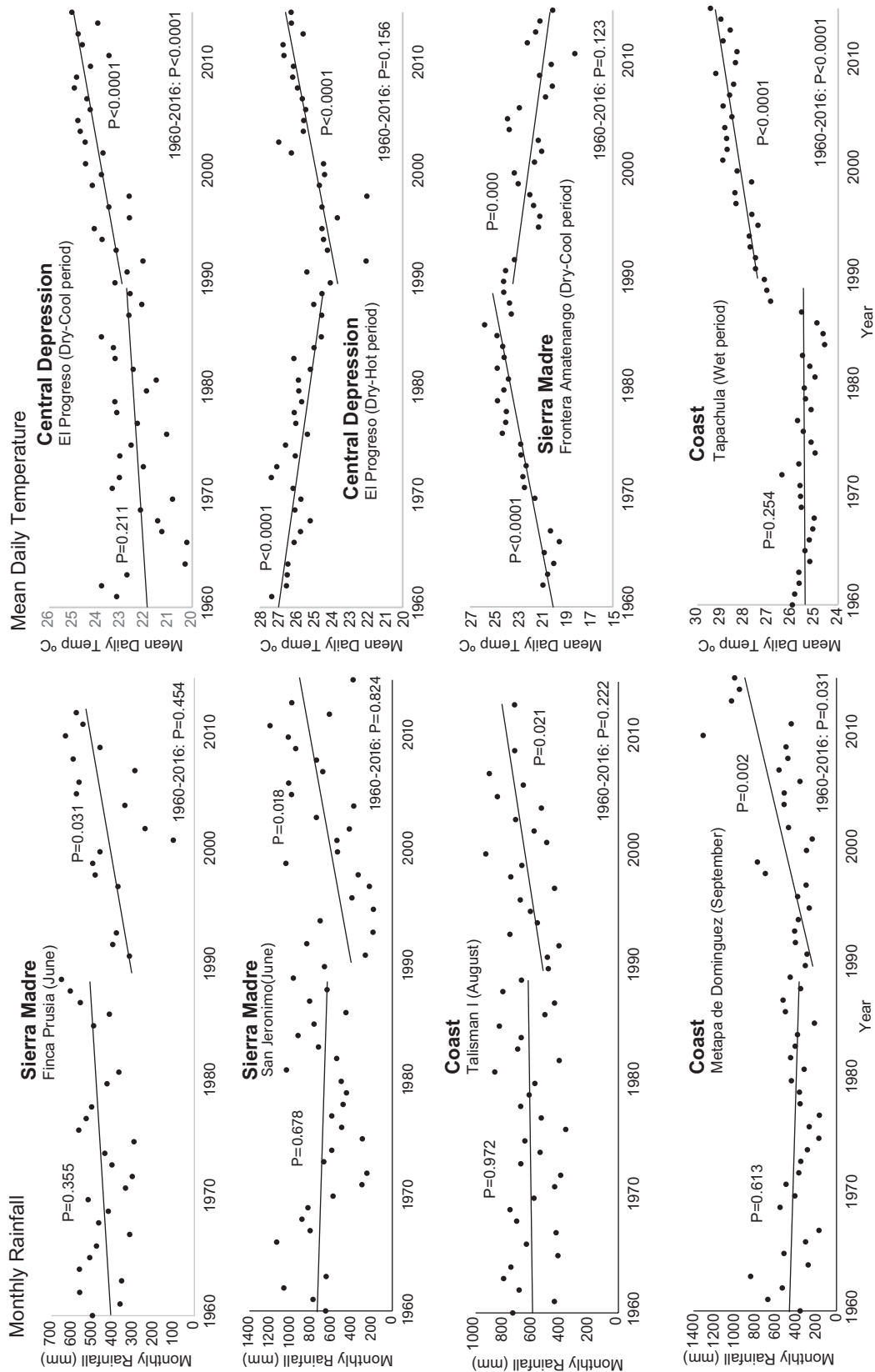


Fig. 6. Trends in monthly rainfall and mean daily temperature during the periods 1960-1989 and 1990-2016 for select weather stations in the central depression, Sierra Madre, and coast regions of Chiapas, Mexico.

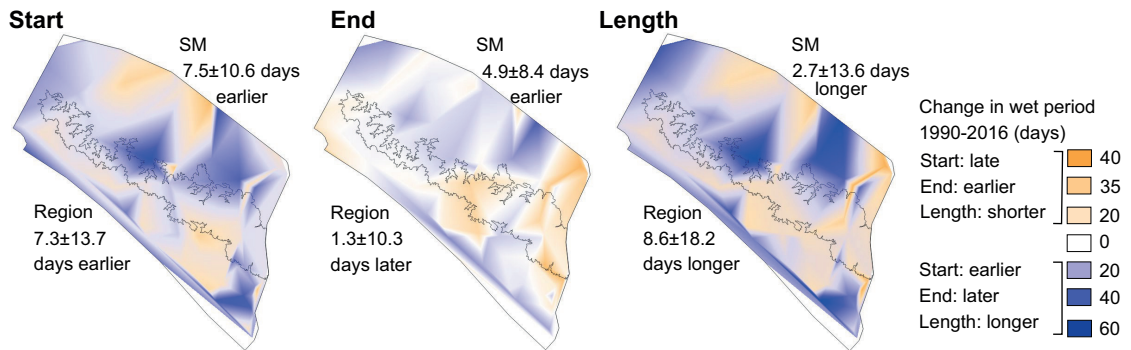


Fig. 7. Changes in the number of days between 1990 and 2016 in the start, end and course of the wet season. The mean and standard deviation of changes in days of the start, end, and course of the wet season within the entire study area (Pacific Chiapas) are written below “Region” on the map. The mean and standard deviation within the Sierra Madre (SM) region are written below “SM”.

forest types increased by 14%, in the Sierra Madre by 3%, and in the coast by 22%; however, with the inclusion of deciduous forest as part of the overall forest areas, forest cover decreased from 1990 to 2020 in the central depression. Deciduous forest has similar characteristics than the scrub type and the boundary is not always clear in the satellite images or in the field, as there can be a gradient between deciduous tree cover and shrubby savanna. The area of scrub vegetation and grassland/temporary agriculture can also change throughout the year, as large areas of land which had grown to become scrublands are burned each year to clear land for cultivation. The combined land cover of deciduous forest or scrub decreased by 5% in the central depression but increased by 22% in the Sierra Madre and 85% in the coast (Fig. 8, Table II).

These changes in vegetation types created conditions for larger areas of leaf-covered forests in

the transition and dry seasons in all regions. Leaf producing forest cover also increased in the Sierra Madre and coast regions during the wet season, but not in the central depression, where the inclusion of deciduous forests (which produce leaves in the wet season) reduced the overall area of leaf-producing forest (Fig. 9). These seasonal and long-term changes can also be seen in the average values of the NDVI (Table S-VIII), which increased in all regions for all three seasons between the 1990 and 2020 images. These increases during the wet season in the central depression could be due to denser growth of the scrub vegetation type or a lower NDVI value at the end of the wet season (November) in the 1990 image compared to the earlier date of the image captured in the 2020 wet season (August). Most of the comparisons in the period 1990-2020 (30 years) were done between similar times of the year, but there were no Landsat images during the 1987-1993 wet

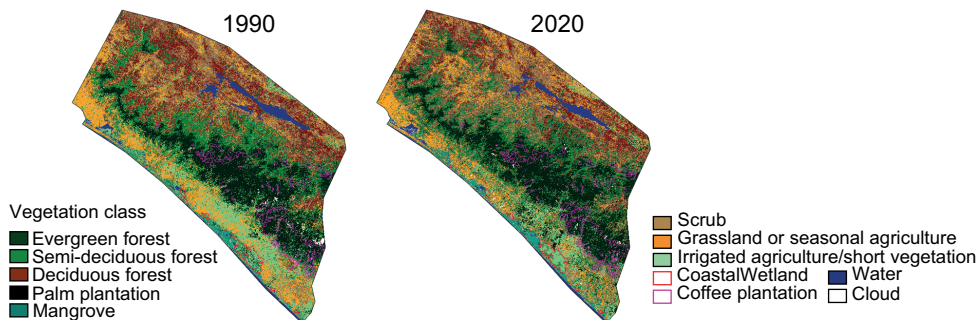


Fig. 8. Land cover in 1990 and 2020 in the Pacific regions of Chiapas, Mexico.

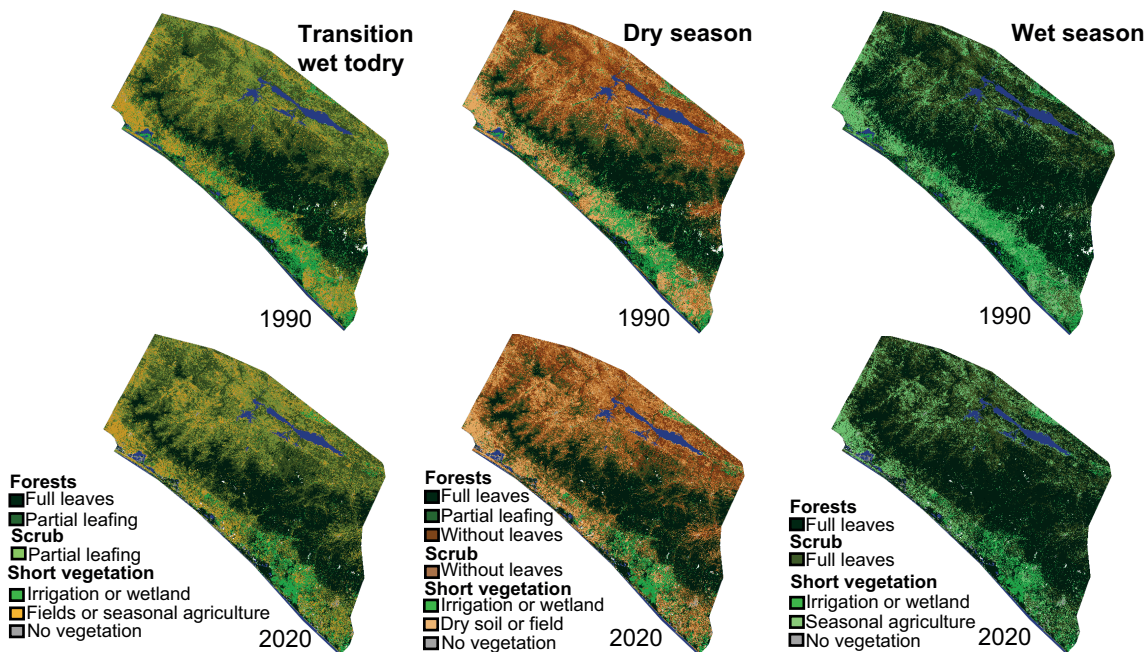


Fig. 9. Seasonal vegetation characteristics of the transition from wet to dry, dry, and wet seasons in 1990 and 2020.

season without large amounts of cloud cover, so the use of an image captured in November was the best option available.

This vegetation index (live green vegetation density) increases, which theoretically would create conditions for greater ET, were offset by decreases in PET between 1990 and 2016, during all three seasons. These decreases were due to the overall regional temperature changes, which were on average warming T_{\min} and cooling T_{\max} . Overall decreases in PET were outweighed by the increases in vegetation index and estimated ET increased between 1990 and 2020 from 2.70 to 2.83 mm/day in the transition season, 2.83 to 3.16 mm/day in the dry season, and without change in the wet season. However, there was variation in the direction of changes between these years with an increase in estimated ET between 1990 and 2005 and a decrease between 2005 and 2020, during the transition season. ET decreased slightly between 1990 and 2005 and then increased between 2005 and 2020 during the dry and wet seasons (Fig. 10).

During the 2020 dry season, the highest amounts of ET were estimated for the coastal low-elevation evergreen vegetation types: mangrove, palm plantation, and coastal wetland (Table IV). These were

followed by mountain evergreen vegetation types: shade coffee, high elevation evergreen forest, low elevation evergreen forest, and lower elevation irrigated agriculture. Lower ET were estimated for deciduous or dry vegetation types: deciduous forest, scrub, and non-irrigated land. During the wet season, when all vegetation types produce green leaves, the denser, low-elevation vegetation, including deciduous forest had the highest estimation of ET. ET decreased with vegetation types at higher, cooler elevations in the Sierra Madre. During the transition season, the highest amounts of ET were observed in the lower-elevation evergreen vegetation types, with ET decreasing in the higher-elevation evergreen types and the lowest amounts in the deciduous vegetation types as leaves dry and fall.

During the dry season, estimates of ET increased from 1990 to 2020 in all vegetation types, except the high-elevation evergreen forest where there was no change (Table IV). During the wet season, ET only increased in the lower-elevation vegetation types between 1990 and 2020 and decreased in the mid- to higher-elevation forest and coffee plantation vegetation. There was little change in the scrub type. Lower-elevation vegetation types also had increases in ET

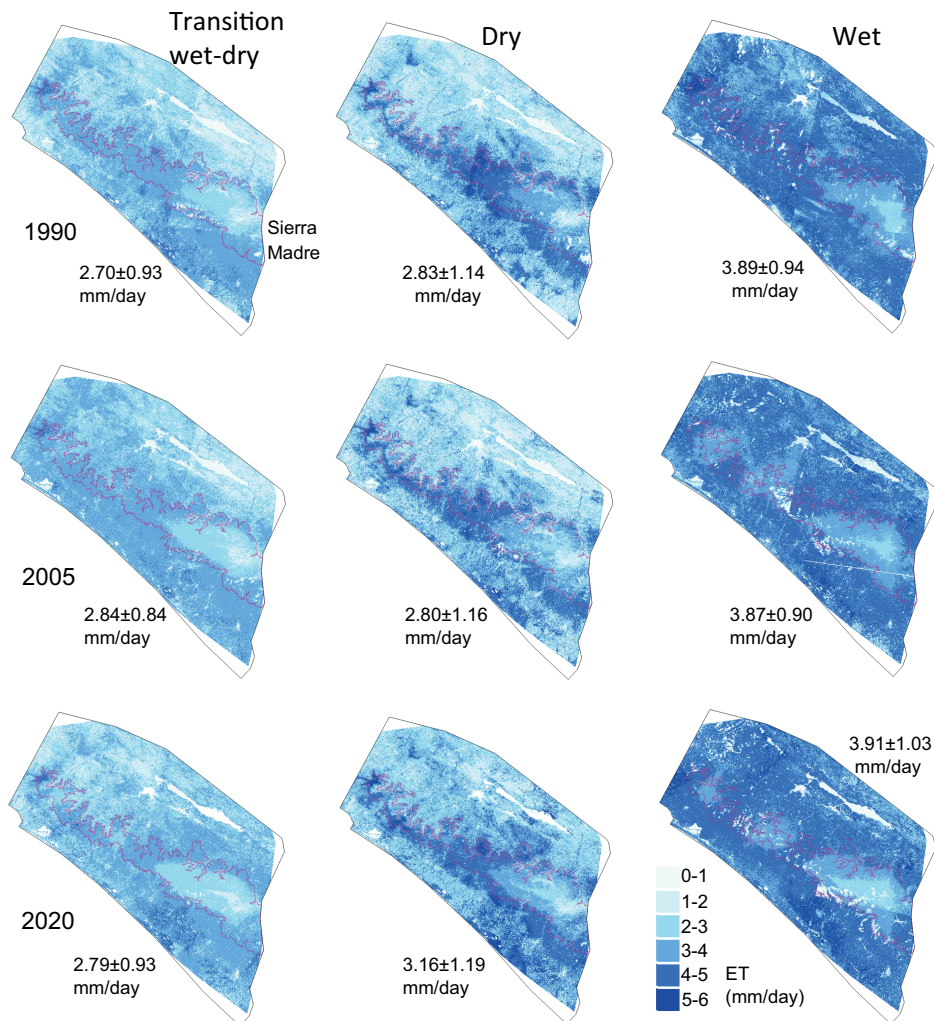


Fig. 10. Estimates of evapotranspiration in the transition from wet to dry, dry, and wet seasons of 1990, 2005, and 2020 in the Pacific regions of Chiapas, Mexico. The mean and standard deviation of evapotranspiration within the study area is written next to each image.

during the transition season, except for the coastal wetland which had a decrease. ET also increased in the mid-elevation semi-evergreen forest during this season. The evergreen forest types and coffee plantations in the Sierra Madre had decreases in ET.

3.4 Relation between local climate trends and vegetation changes

There was no clear correlation between vegetation changes within a 2-km radius of weather stations where there was a significant trend in T_{mean} , and changes in T_{mean} at these locations. This was the case for both changes in NDVI ($p = 0.88$), and percent

change in forest cover ($p = 0.85$). Some areas which had experienced reductions in forest cover between 1990 and 2020 had positive trends of T_{mean} , whereas others had negative trends. Likewise, areas that experienced gains in forest cover had either positive or negative T_{mean} trends.

4. Discussion

4.1 Comparisons between 1960-2016, 1990-2016 trends and large-scale climatic influences

The generally wetter wet seasons and dryer dry seasons during the 1990-2016 period in all three regions

were consistent with global trends in precipitation (Murray-Tortarolo et al., 2017) during a similar time period (1980-2005). Murray-Tortarolo et al. (2017) discussed that these trends may have been the result of global oceanic (La Niña years) and atmospheric (1991 Mt. Pinatubo eruption) conditions during the late 1980s and early 1990s, which lowered global precipitation during these years, and the beginning of global warming influences. However, the relation between rainfall and La Niña are variable within Mexico and are generally associated with higher rainfall in Southern Mexico (Bravo-Cabrera et al., 2017). The lack of significant trends in rainfall in Pacific Chiapas during a longer time period (1960-2016) at most weather stations where there was a wetter trend during the 1990-2016 period, was also consistent with global trends (Murray-Tortarolo et al., 2017), except for an area of the Coast (Metapa de Domínguez during September; Fig. 5, Table S-VII) where there was an extended 57-yr significant wetter trend.

Significant cooler trends between 1990-2016 in the Sierra Madre were not significant since 1960, which contrasted with the longer continuation of significant warmer trends in the coast. Increasing trends in rainfall since 1990 in the mountain region may be related to the cooler trends during 1990-2016 (mostly due to decreases in T_{\max} ; Fig. 4) at higher elevations because of greater cloud cover.

Regional climatic trends between 1990 and 2016 in Pacific Chiapas were consistent with those attributed to the effects of long-term trends in the Pacific Decadal Oscillation (PDO) in southern Mexico (Méndez-González et al., 2010). During this period, the PDO index showed a negative trend from a positive phase in the 1990s to a negative phase in the 2000s (NOAA, 2020b). Méndez-González et al. (2010) determined that from 1950-2007, negative periods of the PDO have been associated with higher summer precipitation, cooler summer T_{\max} , and warmer T_{\min} in southern Mexico. These trends were determined on average for the study region, although not consistently for all weather stations, especially in some parts of the coast, which had increases in both T_{\min} and T_{\max} (Fig. 4).

Summer rainfall in Chiapas is also strongly influenced by the ITCZ bringing moisture from the Caribbean Sea and Gulf of Mexico. SSTs have increased both in the Gulf of Mexico and the Caribbean since

1975 (Lluch-Cota et al., 2013), and higher amounts of evaporation from a warmer surface may increase atmospheric moisture and intensify downwind rainfall (Brito-Castillo, 2012). Increases in rainfall often indicate cloudier conditions and this can affect regional temperatures (Englehart and Douglas, 2005), effects consistent with the determined regional trends. Increased cloud cover blocks incoming day time solar radiation, lowering T_{\max} , whereas nighttime T_{\min} are increased by the insulation of cloud cover, which reemits longwave radiation back to the ground. The predicted climate effects of increases in global atmospheric CO_2 from 1990 amounts described by Liverman and O'Brien (1991) for the southern Pacific region of Mexico were also consistent with those determined by this study for rainfall patterns, although the predicted temperature increases were only determined on average for T_{\min} .

4.2 Relations between land use change, vegetation and climate trends

Between 1970 and 2000, Chiapas experienced large amounts of deforestation (Richter, 2000; Solórzano et al., 2003). However, reviews published in the years after 2000 began to discuss a possible change in the rate of deforestation and beginning of reforestation in parts of Mesoamerica (Bray, 2009). Evidence supporting this prediction may be shown by Vaca et al. (2012), who reported a decreased annual rate of deforestation between the periods of 1990-2000 and 2000-2006 in the dry tropical forests of the central depression of Chiapas. Bonilla-Moheno and Aide (2020) also reported an increase in forest cover in the lower elevation, inland portion of the Sierra Madre between 2001-2014, which was consistent with what was determined in this study.

The abandonment of agricultural areas during increased urban migration, and the large scale of land which had already been deforested by 1990 may have contributed to increased forest cover in the areas adjacent to the Sierra Madre between 1990 and 2020 (Bonilla-Moheno and Aide, 2020). Trends of increasing rainfall in these regions may also have been influential for regeneration of forests in abandoned agricultural areas, even when there were large variations in rainfall between years (Martínez-Ramos et al., 2018). The steep and less accessible Sierra Madre region was by far the most forested of the study area,

with very little overall change in forest cover. The establishment of biosphere reserves beginning in 1990, and programs such as Payment for Hydrological Environmental Services within communities of the Sierra Madre influenced the slower changes in this region (Cano-Díaz et al., 2015).

Large differences in species composition can exist between vegetation types which are difficult to distinguish remotely, such as regenerating deciduous forests and native scrub ecosystems (Gordillo-Ruiz et al., 2020). Species composition, diversity and succession stage can influence differences in vegetation responses to climate trends and ET (Ballinas et al., 2015; Sakschewski et al., 2016). Additionally, topography, vegetation cover, and soil characteristics of landscapes can influence water availability from rainfall (Ponette-González et al., 2010; Schwartz et al., 2019); and vegetation can have physiological responses to changes in climate allowing them to regulate ET (Massmann et al., 2019). These physiographic and physiological characteristics indicate a limitation of the modeling we used to estimate ET. We hope our regional focus inspires further field-based studies of ET in the specific vegetation types we have included. However, the use of local climatic data and remote sensing, which showed increases in dense vegetation cover and regional estimations of ET between 1990 and 2020, were useful to understand the contribution of vegetation changes to the climate of Pacific Chiapas, in particular the coastal mountains.

Regional increases in forest vegetation and ET may have contributed to positive climatic feedback, which combined with the influences of increasing SST in the east coast of Mexico, a negative phase of the PDO in the west coast, and increasing atmospheric CO₂, produced larger positive trends in rainfall during the late dry and wet seasons. Estimates of ET mainly decreased in the mountain evergreen forests between 1990 and 2020 (Table IV) due to decreasing trends in temperature (Fig. 4). However, there were overall increases in estimated regional ET, due to increases in the density of leaf producing vegetation cover and some regional temperature increases, especially in the lower elevation regions (Fig. 10, Table S-VIII). There is also a strong relationship between the onset of the wet season and the production of leaves in deciduous and semi-deciduous vegetation

in Mexico (Gómez-Mendoza et al., 2008). The earlier trend in the start of the wet season in this region may indicate that leaf production is beginning earlier in the year; also that, along with increases of available soil moisture, it could result in earlier increases in ET, contributing to higher atmospheric moisture and higher orographic rainfall in the Sierra Madre.

Increases in semi-deciduous and evergreen forest cover between 1990 and 2020 may cause greater regional latent heat flux, decreases in sensible heat flux (Ray et al., 2006a, b), and increases in surface roughness (Spracklen et al., 2018). This may affect heights of orographic cloud cover, which potentially could decrease with these land cover change conditions (Lawton et al., 2001; Fairman et al., 2011), and affect the altitudinal distribution of rainfall (Barradas et al., 2010). The constant burning of regenerating deciduous forest and savannahs for seasonal agriculture in the central depression creates conditions of higher surface albedo, which can negatively affect rainfall (Fuller and Otke, 2002). This may be another reason for the lower regional increases in rainfall in the central depression in comparison with the much greater forested Sierra Madre region.

At various locations, significant climate trends differed from the overall average regional changes (Figs. 4 and 5; Tables S-III and S-VI). There were no clear relations between local significant temperature or rainfall changes and vegetation changes (forest cover or NDVI). This suggests that the regional climate changes determined were influenced to a greater extent by long term atmospheric and oceanic processes and regional vegetation changes. Local differences in temperature and rainfall patterns may be due to topography, air flow patterns, and the orographic nature of precipitation in this mountainous region, as in other parts of Mesoamerica (Barradas et al., 2010; Maldonado et al., 2018).

Many of the ocean influence patterns are cyclical at a time scale greater than the study period of 27 years (Fuentes-Franco et al., 2015). Therefore, the climate trends and patterns determined in this study may change as trends change in the large-scale climatic influences which affect Chiapas (Aguilar et al., 2005). However, if increasing vegetation cover trends continue in this region, they may moderate future climate cycles in the Sierra Madre (Lawton et al., 2001; Bonan, 2008).

5. Conclusion

Regional 1990-2016 climate trends within Pacific Chiapas included increases in T_{\min} , decreases in T_{\max} , an earlier shift in the wet season, and greater amounts of rainfall within this season. All significant temperature trends continued from 1960-2016 in the coast region but less so in the central depression and did not in the Sierra Madre. Only one significant rainfall (wetter) trend continued during this 57-yr period, in an area of the coast. The more recent (1990-2016) trends occurred during a period of change in ocean and atmospheric climatic influences in the region, including a negative trend in the PDO index, warming SST in the Gulf of Mexico and the Caribbean, and rising amounts of atmospheric CO_2 . During the same time period, regional extents of evergreen and semi-evergreen forest types, NDVI values, and estimates of ET increased. These changes may have enhanced the climatic patterns influenced by large-scale processes.

Acknowledgments

We thank the two anonymous reviewers for their helpful comments to improve the article.

The first author received a doctoral scholarship from Conacyt (No. 884660).

References

- Aguilar E, Peterson TC, Obando PR, Frutos R, Retana JA, Solera M, Soley J, González-García I, Araujo RM, Rosa-Santos A, Valle VE, Brunet M, Aguilar L, Álvarez L, Bautista M, Castañón C, Herrera L, Ruano E, Sinay JJ, Sánchez E, Hernández-Oviedo GI, Obed F, Salgado JE, Vázquez JL, Baca M, Gutiérrez M, Centella C, Espinosa J, Martínez D, Olmedo B, Ojeda-Espinoza CE, Núñez R, Haylock M, Benavides H, Mayorga R. 2005. Changes in precipitation and temperature extremes in Central America and northern South America, 1961-2003. *Journal of Geophysical Research: Atmospheres* 110: D23107. <https://doi.org/10.1029/2005JD006119>
- Aguilar-Rivera N, Rodríguez DA, Enríquez V, Castillo A, Herrera S. 2012. The Mexican sugarcane industry: Overview, constraints, current status and long-term trends. *Sugar Tech* 14: 207-222. <https://doi.org/10.1007/s12355-012-0151-3>
- Ahmad I, Tang D, Wang T, Wang M, Wagan B. 2015. Precipitation trends over time using Mann-Kendall and spearman's rho tests in swat river basin, Pakistan. *Advances in Meteorology* 2015: 1-15. <http://doi.org/10.1155/2015/431860>
- Allen RG, Pereira LS, Raes D, Smith M. 1998. Crop evapotranspiration. Guidelines for computing crop water requirements. FAO Irrigation and drainage paper 56. Food and Agriculture Organization of the United Nations, Rome, 327 pp. Available at: <http://www.fao.org/docrep/X0490E/X0490E00.htm>
- Ballinas M, Esperón-Rodríguez M, Barradas VL. 2015. Estimating evapotranspiration in the central mountain region of Veracruz, Mexico. *Bosque* 36: 445-455.
- Barradas VL, Cervantes-Pérez J, Ramos-Palacios R, Puchet-Anyul C, Vázquez-Rodríguez P, Granados-Ramírez R. 2010. Meso-scale climate change in the central mountain region of Veracruz State, Mexico. In: *Tropical montane cloud forests: Science for conservation and management* (Bruijnzeel LA, Scatena FN, Hamilton LS, Eds.). Cambridge University Press, 549-556.
- Bonan GB. 2008. Forests and climate change: forcings, feedbacks, and the climate benefits of forests. *Science* 320: 1444-1449. <https://doi.org/10.1126/science.1155121>
- Bonilla-Moheno M, Aide TM. 2020. Beyond deforestation: Land cover transitions in Mexico. *Agricultural Systems* 178: 102734. <https://doi.org/10.1016/j.agsy.2019.102734>
- Bravo-Cabrera JL, Azpra-Romero E, Zarraluqui-Such V, Gay-García C. 2017. Effects of El Niño in Mexico during rainy and dry seasons: An extended treatment. *Atmósfera* 30: 221-232. <https://doi.org/10.20937/atm.2017.30.03.03>
- Bray DB. 2009. Forest cover dynamics and forest transitions in Mexico and Central America: Towards a "great restoration"? In: *Reforesting landscapes: Linking patterns and process* (Nagendra H, Southworth J., Eds.). Springer, Dordrecht, 85-120. https://doi.org/10.1007/978-1-4020-9656-3_5
- Brito-Castillo L. 2012. Regional pattern of trends in long-term precipitation and stream flow observations: singularities in a changing climate in Mexico. In: *Greenhouse gases: Emission, measurement and management* (Liu G. Ed.). BoD Books on Demand, Norderstedt, 387-412.
- Cano-Díaz VC, Cortina-Villar S, Soto-Pinto L. 2015. La construcción de la acción colectiva en una comunidad

- del área natural protegida La Frailecana, Chiapas, México. *Argumentos* 28: 79-96.
- Casagrande E, Recanati F, Melià P. 2018. Assessing the influence of vegetation on the water budget of tropical areas. *IFAC-PapersOnLine* 51: 1-6. <https://doi.org/10.1016/j.ifacol.2018.06.190>
- Castro-Mendoza I, Magdaleno-González R, Cruz-Salinas E, Reynoso-Santos R, López-Báez W. 2016. Balance hídrico de la cuenca Pijijiapan en Chiapas, México. *Ingeniería Hidráulica y Ambiental* 37: 18-28. <http://scielo.sld.cu/pdf/riha/v37n2/riha02216.pdf>
- Chambers JQ, Artaxo P. 2017. Deforestation size influences rainfall. *Nature Climate Change* 7: 175-176. <https://doi.org/10.1038/nclimate3238>
- Conagua. 2018. Comisión Nacional del Agua. Available at: <https://smn.conagua.gob.mx/es/climatologia/informacion-climatologica/informacion-estadistica-climatologica> (accessed on October 22, 2018).
- Conagua. 2020. Estaciones meteorológicas automáticas (EMAS). Comisión Nacional del Agua. Available at: <https://smn.conagua.gob.mx/es/observando-el-tiempo/estaciones-meteorologicas-automaticas-ema-s> (accessed on July 20, 2020).
- Durán-Quesada AM, Reboita M, Gimeno L. 2012. Precipitation in tropical America and the associated sources of moisture: A short review. *Hydrological Sciences Journal* 57: 612-624. <https://doi.org/10.1080/02626667.2012.673723>
- Englehart PJ, Douglas AV. 2005. Changing behavior in the diurnal range of surface air temperatures over Mexico. *Geophysical Research Letters* 32: L01701. <https://doi.org/10.1029/2004GL021139>
- Fairman JG, Nair US, Christopher SA, Mölg T. 2011. Land use change impacts on regional climate over Kilimanjaro. *Journal of Geophysical Research: Atmospheres* 116: DO3110. <https://doi.org/10.1029/2010JD014712>
- Fisher JB, Whittaker RJ, Malhi Y. 2011. ET come home: Potential evapotranspiration in geographical ecology. *Global Ecology and Biogeography* 20: 1-18. <https://doi.org/10.1111/j.1466-8238.2010.00578.x>
- Fuentes-Franco R, Coppola E, Giorgi F, Pavia EG, Diro GT, Graef F. 2015. Inter-annual variability of precipitation over Southern Mexico and Central America and its relationship to sea surface temperature from a set of future projections from CMIP5 GCMs and RegCM4 CORDEX simulations. *Climate Dynamics* 45: 425-440. <https://doi.org/10.1007/s00382-014-2258-6>
- Fuller DO, Ottke C. 2002. Land cover, rainfall and land-surface albedo in West Africa. *Climatic Change* 54: 181-204. <https://doi.org/10.1023/A:1015730900622>
- García E. 1974. Distribución de la precipitación en la República Mexicana. *Investigaciones Geográficas* 5: 7-20.
- Glenn EP, Neale CM, Hunsaker DJ, Nagler PL. 2011. Vegetation index-based crop coefficients to estimate evapotranspiration by remote sensing in agricultural and natural ecosystems. *Hydrological Processes* 25: 4050-4062. <https://doi.org/10.1002/hyp.8392>
- Golicher JD, Ramírez-Marcial N, Levy-Tacher SI. 2006. Correlations between precipitation patterns in southern Mexico and the El Niño sea surface temperature index. *Interciencia* 31: 80-86.
- Gómez-Mendoza L, Galicia L, Cuevas-Fernández ML, Magana V, Gómez G, Palacio-Prieto JL. 2008. Assessing onset and length of greening period in six vegetation types in Oaxaca, Mexico, using NDVI-precipitation relationships. *International Journal of Biometeorology* 52: 511-520. <https://doi:10.1007/s00484-008-0147-6>
- González-García F, Santana-C E., Barbudo PDJ, Rico-Gray V, Moliner VU. 2017. Diet and feeding behavior of the Horned Guan (*Oreophasis derbianus*) in Mexico. *The Wilson Journal of Ornithology* 129: 771-782. <https://doi.org/10.1676/16-041.1>
- Gordillo-Ruiz MC, Pérez-Farrera, MÁ, Castillo-Santiago MÁ. 2020. Estructura y composición arbórea del bosque tropical caducifolio secundario en la Depresión Central, Chiapas, México. *Madera y Bosques* 26: e2632055. <https://doi.org/10.21829/myb.2020.2632055>
- Hewitson BC, Crane RG. 1992. Large-scale atmospheric controls on local precipitation in tropical Mexico. *Geophysical Research Letters* 19: 1835-1838. <https://doi.org/10.1029/92GL01423>
- Hewitson BC, Crane RG. 1994. Precipitation controls in southern Mexico. In: *Neural nets: Applications in geography* (Hewitson BC, Crane RG, Eds.). Springer, Dordrecht, 121-143.
- Holwerda F, Bruijnzeel LA, Barradas VL, Cervantes J. 2013. The water and energy exchange of a shaded coffee plantation in the lower montane cloud forest zone of central Veracruz, Mexico. *Agricultural and Forest Meteorology* 173: 1-13. <https://doi.org/10.1016/j.agrformet.2012.12.015>
- INEGI. 2017. Conjunto de datos vectoriales de uso del suelo y vegetación escala 1:250 000, Serie VI. Instituto

- Nacional de Estadística y Geografía. Available at: <https://www.inegi.org.mx/app/biblioteca/ficha.htm?upc=889463173359> (accessed on August 27, 2020).
- Jones KW, Brenes CLM, Shinbrot XA, López-Báez W, Rivera-Castañeda A. 2018. The influence of cash and technical assistance on household-level outcomes in payments for hydrological services programs in Chiapas, Mexico. *Ecosystem Services* 31: 208-218. <https://doi.org/10.1016/j.ecoser.2018.04.008>
- Karmalkar AV, Bradley RS, Diaz HF. 2008. Climate change scenario for Costa Rican montane forests. *Geophysical Research Letters* 35: 1-5. <https://doi.org/10.1029/2008GL033940>
- Lawton RO, Nair US, Pielke RA, Welch RM. 2001. Climatic impact of tropical lowland deforestation on nearby montane cloud forests. *Science* 294: 584-587. <https://doi.org/10.1126/science.1062459>
- Lister BC, Garcia A. 2018. Climate-driven declines in arthropod abundance restructure a rainforest food web. *Proceedings of the National Academy of Sciences* 115: E10397-E10406. <https://doi.org/10.1073/pnas.1722477115>
- Liverman DM, O'Brien KL. 1991. Global warming and climate change in Mexico. *Global Environmental Change* 1: 351-364. [https://doi.org/10.1016/0959-3780\(91\)90002-B](https://doi.org/10.1016/0959-3780(91)90002-B)
- Lluch-Cota SE, Tripp-Valdéz M, Lluch-Cota DB, Lluch-Belda D, Verbesselt J, Herrera-Cervantes H, Bautista-Romero JJ. 2013. Recent trends in sea surface temperature off Mexico. *Atmósfera* 26: 537-546. [https://doi.org/10.1016/S0187-6236\(13\)71094-4](https://doi.org/10.1016/S0187-6236(13)71094-4)
- Long A, Heath M. 1991. Flora of the El Triunfo biosphere reserve, Chiapas, Mexico. A preliminary floristic inventory and the plant communities of Polygon 1. *Anales del Instituto de Biología de la Universidad Nacional Autónoma de México. Serie Botánica* 62: 133-172
- Maldonado T, Alfaro EJ, Hidalgo HG. 2018. A review of the main drivers and variability of Central America's Climate and seasonal forecast systems. *Revista de Biología Tropical* 66: S153-S175. <https://doi.org/10.15517/RBT.V66I1.33294>
- Mardero S, Schmook B, Christman Z, Metcalfe SE, de la Barreda-Bautista B. 2019. Recent disruptions in the timing and intensity of precipitation in Calakmul, Mexico. *Theoretical and Applied Climatology* 140: 129-144. <https://doi.org/10.1007/s00704-019-03068-4>
- Martínez-Ramos M, Balvanera P, Villa FA, Mora F, Maass JM, Méndez SMV. 2018. Effects of long-term inter-annual rainfall variation on the dynamics of regenerative communities during the old-field succession of a neotropical dry forest. *Forest Ecology and Management* 426: 91-100. <https://doi.org/10.1016/j.foreco.2018.04.048>
- Massmann A, Gentine P, Lin C. 2019. When does vapor pressure deficit drive or reduce evapotranspiration? *Journal of Advances in Modeling Earth Systems* 11: 3305-3320. <https://doi.org/10.1029/2019MS001790>
- Méndez-González J, Ramírez-Leyva A, Cornejo-Oviedo E, Zárate Lupercio A, Cavazos-Pérez T. 2010. Teleconexiones de la Oscilación Decadal del Pacífico (PDO) a la precipitación y temperatura en México. *Investigaciones Geográficas* 73: 57-70.
- Mitas L, Mitasova H. 1999. Spatial interpolation. In: *Geographical information systems: Principles, techniques, management and applications* (Longley PA, Goodchild MF, Maguire DJ, Rhind DW, Eds.). John Wiley & Sons, New York, 481-492.
- Murray-Tortarolo G, Jaramillo VJ, Maass M, Friedlingstein P, Sitch S. 2017. The decreasing range between dry-and wet-season precipitation over land and its effect on vegetation primary productivity. *PLoS ONE* 12: e0190304. <https://doi.org/10.1371/journal.pone.0190304>
- NOAA. 2020a. Global Monitoring Laboratory. National Oceanic and Atmospheric Administration. Available at: <https://www.esrl.noaa.gov/gmd/ccgg/trends/global.html> (accessed on October 12, 2020).
- NOAA. 2020b. Physical Science Laboratory. National Oceanic and Atmospheric Administration. Available at: <https://psl.noaa.gov/pdo/> (accessed on October 12, 2020).
- O'Brien KL. 1998. Tropical deforestation and climate change: What does the record reveal? *The Professional Geographer* 50: 140-153. <https://doi.org/10.1111/0033-0124.00110>
- Ponette-González, AG, Weathers KC, Curran LM. 2010. Water inputs across a tropical montane landscape in Veracruz, Mexico: Synergistic effects of land cover, rain and fog seasonality, and interannual precipitation variability. *Global Change Biology* 16: 946-963. <https://doi.org/10.1111/j.1365-2486.2009.01985.x>
- Pounds JA, Fogden MP, Campbell JH. 1999. Biological response to climate change on a tropical mountain. *Nature* 398: 611-615. <https://doi.org/10.1038/19297>
- Ramón-Reinozo M, Ballari D, Cabrera JJ, Crespo P, Carrillo-Rojas G. 2019. Altitudinal and temporal

- evapotranspiration dynamics via remote sensing and vegetation index-based modelling over a scarce-monitored, high-altitudinal Andean paramo ecosystem of Southern Ecuador. *Environmental Earth Sciences* 78: 340. <https://doi.org/10.1007/s12665-019-8337-6>
- Ray DK, Nair US, Lawton RO, Welch RM, Pielke Sr RA. 2006a. Impact of land use on Costa Rican tropical montane cloud forests: Sensitivity of orographic cloud formation to deforestation in the plains. *Journal of Geophysical Research: Atmospheres* 111: D02108. <https://doi.org/10.1029/2005JD006096>
- Ray DK, Welch RM, Lawton RO, Nair US. 2006b. Dry season clouds and rainfall in northern Central America: Implications for the Mesoamerican Biological Corridor. *Global and Planetary Change* 54: 150-162. <https://doi.org/10.1016/j.gloplacha.2005.09.004>
- Richter M. 2000. The ecological crisis in Chiapas: A case study from Central America. *Mountain Research and Development* 20: 332-339. [https://doi.org/10.1659/0276-4741\(2000\)020\[0332:TECICA\]2.0.CO;2](https://doi.org/10.1659/0276-4741(2000)020[0332:TECICA]2.0.CO;2)
- Rojas-Soto OR, Sosa V, Ornelas JF. 2012. Forecasting cloud forest in eastern and southern Mexico: conservation insights under future climate change scenarios. *Biodiversity and Conservation* 21: 2671-2690. <https://doi.org/10.1007/s10531-012-0327-x>
- Sakschewski B, von Bloh W, Boit A, Poorter L, Peña-Claros M, Heinke J, Joshi J, Thonicke K. 2016. Resilience of Amazon forests emerges from plant trait diversity. *Nature Climate Change* 6: 1032-1036. <https://doi.org/10.1038/nclimate3109>
- Schroth G, Laderach P, Dempewolf J, Philpott S, Haggard J, Eakin H, Castillejos T, García-Moreno J, Soto-Pinto L, Hernández R, Eitzinger A, Ramírez-Villegas J. 2009. Towards a climate change adaptation strategy for coffee communities and ecosystems in the Sierra Madre de Chiapas, Mexico. *Mitigation and Adaptation Strategies for Global Change* 14: 605-625. <https://doi.org/10.1007/s11027-009-9186-5>
- Schwartz NB, Budsock AM, Uriarte M. 2019. Fragmentation, forest structure, and topography modulate impacts of drought in a tropical forest landscape. *Ecology* 100: e02677. <https://doi.org/10.1002/ecy.2677>
- Sheil D. 2018. Forests, atmospheric water and an uncertain future: the new biology of the global water cycle. *Forest Ecosystems* 5: 1-22. <https://doi.org/10.1186/s40663-018-0138-y>
- Solórzano S, Castillo S, Valverde T, Ávila L. 2000. Quetzal abundance in relation to fruit availability in a cloud forest in southeastern Mexico. *Biotropica* 32: 523-532.
- Solórzano S, Castillo-Santiago MA, Navarrete-Gutiérrez DA, Oyama K. 2003. Impacts of the loss of neotropical highland forests on the species distribution: A case study using resplendent quetzal an endangered bird species. *Biological Conservation* 114: 341-349. [https://doi.org/10.1016/S0006-3207\(03\)00054-5](https://doi.org/10.1016/S0006-3207(03)00054-5)
- Spracklen DV, Baker JCA, García-Carreras L, Marsham JH. 2018. The effects of tropical vegetation on rainfall. *Annual Review of Environment and Resources* 43: 193-218. <https://doi.org/10.1146/annurev-environ-102017-030136>
- Turc L. 1961. Estimation of irrigation water requirements, potential evapotranspiration: A simple climatic formula evolved up to date. *Annales Agronomiques* 12: 13-49.
- USGS. 2020. Earth Explorer. United States Geological Survey. Available at: <https://earthexplorer.usgs.gov/> (accessed on July 2, 2020).
- Vaca RA, Golicher DJ, Cayuela L, Hewson J, Steininger M. 2012. Evidence of incipient forest transition in Southern Mexico. *PLoS ONE* 7: e42309. <https://doi.org/10.1371/journal.pone.0042309>
- Velásquez N, Liverman, Botero V, Vélez JI. 2011. Rainfall distribution based on a Delaunay triangulation method. In: *Transactions on Computational Science XIV* (Gavrilova M, Tan CJK, Mostafavi M, Eds.). Springer, Berlin, Heidelberg, 173-187. https://doi.org/10.1007/978-3-642-25249-5_7
- Xiang K, Li Y, Horton R, Feng H. 2020. Similarity and difference of potential evapotranspiration and reference crop evapotranspiration. A review. *Agricultural Water Management* 232: 1-16. <https://doi.org/10.1016/j.agwat.2020.106043>
- Zhang K, Kimball JS, Nemani RR, Running SW, Hong Y, Gourley JJ, Yu Z. 2015. Vegetation greening and climate change promote multidecadal rises of global land evapotranspiration. *Scientific Reports* 5: 15956. <https://doi.org/10.1038/srep15956>

SUPPLEMENTARY MATERIAL

Table S-I. Coordinates and elevations of the weather stations with data used for the analysis of temperature, potential evapotranspiration, and monthly rainfall.

Weather Station	Analysis variable	Latitude	Longitude	Elevation (masl)	Region
Adolfo Ruiz Cortínez	T/PET	14.875000	-92.537500	4	Coast
Arriaga	T/PET/R	16.241667	-93.908333	64	Coast
Cacahoatán	R	14.988333	-92.164444	480	Coast
Cacaluta	T/PET/R	15.365	-92.731111	80	Coast
Chahuities	T/PET/R	16.25	-94.233056	23	Coast
Despoblado	T/PET/R	15.2025	-92.558056	63	Coast
Ejido Ibarra	R	15.333889	-92.952222	9	Coast
El Dorado	T/PET/R	14.672778	-92.212778	35	Coast
Escuintla (DGE)	T/PET/R	15.330833	-92.655833	92	Coast
Finca Argovia	R	15.126667	-92.299167	620	Coast
Francisco Sarabia	T/PET/R	15.417778	-92.998333	25	Coast
Frontera Hidalgo	T/PET/R	14.777222	-92.176111	60	Coast
Horcones	T/PET	15.955278	-93.605556	130	Coast
Huehuetán	T/R	15.002222	-92.400278	65	Coast
Independencia	T/PET/R	15.348333	-92.578333	112	Coast
Ingacio López Rayón	T/PET/R	14.617778	-92.184722	7	Coast
Las Brisas	T/PET/R	15.514444	-93.116944	10	Coast
Mazatán	T/PET/R	14.886389	-92.453889	15	Coast
Medio Monte	T/PET/R	14.915278	-92.190556	245	Coast
Metapa de Domínguez	R	14.831111	-92.191667	98	Coast
Pijijapan	T/PET/R	15.697778	-93.211389	57	Coast
Plan de Iguala	T/PET/R	14.958889	-92.504167	18	Coast
Salvación	T/PET/R	15.143889	-92.701389	8	Coast
San Isidro	R	15.742778	-93.351389	45	Coast
San Jerónimo	T/R	15.039722	-92.136389	750	Coast
Santo Domingo	T/R	15.0275	-92.104167	859	Coast
Talismán I	R	14.963056	-92.147222	340	Coast
Tapachula	T/PET/R	14.920833	-92.25	193	Coast
Tonalá	T/PET/R	16.084167	-93.743889	55	Coast
Tres Picos	T/PET/R	15.875	-93.545833	20	Coast
Buenos Aires	T/PET/R	15.3325	-92.2675	1820	Sierra Madre
El Porvenir	T/PET/R	15.457222	-92.281111	2847	Sierra Madre
Finca A. Prusia	R	15.731944	-92.794167	1040	Sierra Madre
Finca Chicharras	T/PET/R	15.133056	-92.242222	1328	Sierra Madre
Finca Cuxtepeques	T/PET/R	15.728611	-92.968889	1550	Sierra Madre
Finca Germania	R	15.194444	-92.345833	1214	Sierra Madre
Finca Hamburgo	R	15.173089	-92.325278	1200	Sierra Madre
Frontera Amatenango	T/PET/R	15.433611	-92.114167	900	Sierra Madre
Monterrey	PET/R	16.058889	-93.368889	700	Sierra Madre
Motozintla	T/R	15.364167	-92.248056	1260	Sierra Madre
Reforma II	T/PET/R	15.9	-92.933333	700	Sierra Madre
Unión Juárez	T/PET/R	15.0625	-92.080556	1300	Sierra Madre
Úrsulo Galván	T/PET/R	16.278611	-93.418611	700	Sierra Madre
El Triunfo	PET	15.6566	-92.8081	1973	Sierra Madre
Sierra Madre 1	PET	15.5497	-92.6268	1898	Sierra Madre
Sierra Madre 2	PET	15.8709	-93.1338	1896	Sierra Madre
Sierra Madre 3	PET	16.1977	-93.6121	2366	Sierra Madre
Acala	T/PET/R	16.552778	-92.804167	420	Central Depression

T: temperature; PET: potential evapotranspiration; R: monthly rainfall.

Table S-I. Coordinates and elevations of the weather stations with data used for the analysis of temperature, potential evapotranspiration, and monthly rainfall.

Weather Station	Analysis variable	Latitude	Longitude	Elevation (masl)	Region
Aquespala	R	15.794167	-91.920278	617	Central Depression
Benito Juárez	R	16.082778	-92.840556	580	Central Depression
Berriozábal	T/R	16.796944	-93.265278	890	Central Depression
Cascajal	T/PET/R	16.308889	-92.486111	650	Central Depression
Catarinitas	T/PET/R	15.9025	-92.482778	945	Central Depression
Chicomuselo	T/PET/R	15.751667	-92.273611	550	Central Depression
El Boquerón	T/PET/R	16.644167	-93.157222	500	Central Depression
El Progreso	T/R	16.708889	-93.4025	781	Central Depression
Finca Ocotlán	T/PET/R	16.369444	-93.477222	650	Central Depression
Flores Magón	R	16.393333	-92.696111	482	Central Depression
Francisco I. Madero	R	16.802778	-93.755278	736	Central Depression
Guadalupe Grijalva	T/PET/R	15.693611	-92.161111	630	Central Depression
Jaltenango	T/PET/R	15.870833	-92.723889	640	Central Depression
La Angostura (CFE)	T/R	16.419722	-92.767778	500	Central Depression
La Mesilla	T/R	16.184167	-92.2875	1210	Central Depression
La Unión	T/PET/R	16.665	-93.800833	580	Central Depression
Las Flores	T/R	16.691944	-93.563056	480	Central Depression
Ocozacoautla	R	16.750883	-93.373889	838	Central Depression
Paso Hondo	R	15.684444	-92.006944	660	Central Depression
Portaceli	PET/R	16.449167	-93.125278	780	Central Depression
Puente Colgante	T/PET/R	16.740556	-93.031111	418	Central Depression
Puente Concordia (CFE)	T/PET/R	15.848611	-91.968056	582	Central Depression
Querétaro	R	15.838611	-92.755556	665	Central Depression
Revolucion Mexicana	T/PET/R	16.163056	-93.076389	540	Central Depression
Rosendo Salazar	R	16.471111	-94.003889	721	Central Depression
San Miguel	T/PET/R	15.708611	-92.208611	600	Central Depression
Soyatitán	T/PET/R	16.288889	-92.428333	832	Central Depression
Tuxtla Gutiérrez (CFE)	T/PET/R	16.761667	-93.102778	532	Central Depression
Villa Corso	R	16.194444	-93.2625	600	Central Depression
Villa de Chiapilla	R	16.5775	-92.715278	550	Central Depression
Villaflora	T/PET/R	16.228889	-93.2625	554	Central Depression
Abelardo L. Rodríguez	R	16.379167	-92.2375	1920	Central Highlands
La Cabaña	R	16.714167	-92.628889	2113	Central Highlands
La Trinitaria (CFE)	T/PET/R	16.117778	-92.051667	1540	Central Highlands

T: temperature; PET: potential evapotranspiration; R: monthly rainfall.

Table S-II. Years with data used to determine significant rainfall trends.*

Year	Years with data where significant rainfall trends were determined																				
	Central Depression					Sierra Madre													Coast		
	1	2	3	4	5	6	7	8	9	10	11	12	13	14	15	16	17	18	19	20	21
1990	■	■	■	■	■	■	■	■	■	■	■	■	■	■	■	■	■	■	■	■	■
1991	■	■	■	■	■	■	■	■	■	■	■	■	■	■	■	■	■	■	■	■	■
1992	■	■	■	■	■	■	■	■	■	■	■	■	■	■	■	■	■	■	■	■	■
1993	■	■	■	■	■	■	■	■	■	■	■	■	■	■	■	■	■	■	■	■	■
1994	■	■	■	■	■	■	■	■	■	■	■	■	■	■	■	■	■	■	■	■	■
1995	■	■	■	■	■	■	■	■	■	■	■	■	■	■	■	■	■	■	■	■	■
1996	■	■	■	■	■	■	■	■	■	■	■	■	■	■	■	■	■	■	■	■	■
1997	■	■	■	■	■	■	■	■	■	■	■	■	■	■	■	■	■	■	■	■	■
1998	■	■	■	■	■	■	■	■	■	■	■	■	■	■	■	■	■	■	■	■	■
1999	■	■	■	■	■	■	■	■	■	■	■	■	■	■	■	■	■	■	■	■	■
2000	■	■	■	■	■	■	■	■	■	■	■	■	■	■	■	■	■	■	■	■	■
2001	■	■	■	■	■	■	■	■	■	■	■	■	■	■	■	■	■	■	■	■	■
2002	■	■	■	■	■	■	■	■	■	■	■	■	■	■	■	■	■	■	■	■	■
2003	■	■	■	■	■	■	■	■	■	■	■	■	■	■	■	■	■	■	■	■	■
2004	■	■	■	■	■	■	■	■	■	■	■	■	■	■	■	■	■	■	■	■	■
2005	■	■	■	■	■	■	■	■	■	■	■	■	■	■	■	■	■	■	■	■	■
2006	■	■	■	■	■	■	■	■	■	■	■	■	■	■	■	■	■	■	■	■	■
2007	■	■	■	■	■	■	■	■	■	■	■	■	■	■	■	■	■	■	■	■	■
2008	■	■	■	■	■	■	■	■	■	■	■	■	■	■	■	■	■	■	■	■	■
2009	■	■	■	■	■	■	■	■	■	■	■	■	■	■	■	■	■	■	■	■	■
2010	■	■	■	■	■	■	■	■	■	■	■	■	■	■	■	■	■	■	■	■	■
2011	■	■	■	■	■	■	■	■	■	■	■	■	■	■	■	■	■	■	■	■	■
2012	■	■	■	■	■	■	■	■	■	■	■	■	■	■	■	■	■	■	■	■	■
2013	■	■	■	■	■	■	■	■	■	■	■	■	■	■	■	■	■	■	■	■	■
2014	■	■	■	■	■	■	■	■	■	■	■	■	■	■	■	■	■	■	■	■	■
2015	■	■	■	■	■	■	■	■	■	■	■	■	■	■	■	■	■	■	■	■	■
2016	■	■	■	■	■	■	■	■	■	■	■	■	■	■	■	■	■	■	■	■	■

*Central depression: 1) Francisco I. Madero (June), 2) Francisco I. Madero (Sept), 3) Villa Corzo (Aug), 4) Chicomuselo (Sept), 5) Benito Juárez (Aug); Sierra Madre: 6) Finca A. Prusia (May), 7) Finca A. Prusia (June), 8) Finca A. Prusia (July), 9) Finca A. Prusia (Aug), 10) Buenos Aires (May), 11) Independencia (June), 12) Independencia (Aug), 13) Independencia (Sept), 14) San Jerónimo (June), 15) San Jerónimo (July), 16) San Jerónimo (Aug), 17) San Jerónimo (Sept), 18) San Jerónimo (Oct); and coast: 19) San Isidro (June), 20) Talismán (Aug), 21) Metapa de Domínguez (Sept).

Table S-III. Changes in monthly rainfall between 1990 and 2016 in the Sierra Madre, central depression (CD) and coast areas of Chiapas, Mexico. Only weather stations with significant ($p < 0.05$) rainfall trends are included. Significant rainfall trends during the longer 1960-2016 period at the same stations are indicated in the far-right column (trend since 1960), where data are available since 1960. Details of these trends are shown in Table S-VII.

Area	Weather station	Month	No. of data	Regression value	P-value	Change (mm)	Trend since 1960
CD	Francisco I. Madero	June	26	0.4036	0.002	200	
CD	Villa Corzo	Aug	17	0.4004	0.002	160	
CD	Francisco I. Madero	Sept	25	0.3475	0.002	220	
CD	Chicomuselo	Sept	24	0.2314	0.018	260	
CD	Benito Juárez	Aug	25	0.1852	0.021	180	
Sierra	Finca A. Prusia	May	18	0.277	0.003	200	No
Sierra	Buenos Aires	May	21	0.2848	0.010	150	
Sierra	Finca A. Prusia	June	18	0.2232	0.031	230	No
Sierra	Independencia	June	23	0.4194	0.000	440	
Sierra	San Jerónimo	June	25	0.2243	0.018	500	No
Sierra	Finca A. Prusia	July	18	0.2692	0.023	400	No
Sierra	San Jerónimo	July	24	0.2778	0.004	500	No
Sierra	Finca A. Prusia	Aug	18	0.1242	0.041	400	No
Sierra	Independencia	Aug	24	0.2366	0.031	320	
Sierra	San Jerónimo	Aug	24	0.2286	0.035	400	No
Sierra	Independencia	Sept	23	0.2495	0.002	400	
Sierra	San Jerónimo	Sept	23	0.3234	0.006	650	No
Sierra	San Jerónimo	Oct	25	0.2541	0.012	470	No
Coast	San Isidro	June	23	0.3693	0.001	400	
Coast	Talismán	Aug	20	0.2549	0.021	250	No
Coast	Metapa de Domínguez	Sept	24	0.4361	0.002	600	Yes

Table S-IV. Landsat satellite images used for classification of vegetation types and estimation of evapotranspiration.

Path	Row	Season	Date	Landsat	Bands used for classification	Bands used for NDVI
1990 (1987-1992)						
22	49	Transition	19 December 1987	5	2,3,4	3,4
21	49	Transition	3 February 1990	5	2,3,4	3,4
21	50	Transition	1 December 1989	5	2,3,4	3,4
22	49	Dry	19 March 1992	5	2,3,4	3,4
21	49	Dry	19 April 1991	5	2,3,4	3,4
21	50	Dry	19 April 1991	5	2,3,4	3,4
22	49	Wet	19 November 1988	5	2,3,4	3,4
21	49	Wet	14 August 1987	5	2,3,4	3,4
21	50	Wet	8 July 1991	5	2,3,4	3,4
2005 (1997-2011)						
22	49	Transition	22 December 1997	5	2,3,4	3,4
21	49	Transition	1 February 1998	5	2,3,4	3,4
21	50	Transition	16 November 1998	5	2,3,4	3,4
22	49	Dry	1 April 2011	5	2,3,4	3,4
21	49	Dry	9 April 1999	5	2,3,4	3,4
21	50	Dry	8 March 1999	5	2,3,4	3,4
22	49	Wet	24 August 2000	5	2,3,4	3,4
21	49	Wet	16 July 2000	5	2,3,4	3,4
21	50	Wet	24 July 1997	5	2,3,4	3,4
2020 (2017-2020)						
22	49	Transition	11 January 2017	8	3,4,5	4,5
21	49	Transition	28 December 2019	8	3,4,5	4,5
21	50	Transition	28 December 2019	8	3,4,5	4,5
22	49	Dry	23 April 2019	8	3,4,5	4,5
21	49	Dry	26 April 2017	8	3,4,5	4,5
21	49	Dry	29 January 2020	8	3,4,5	4,5
21	50	Dry	11 February 2019	8	3,4,5	4,5
22	49	Wet	29 August 2019	8	3,4,5	4,5
21	49	Wet	5 July 2019	8	3,4,5	4,5
21	50	Wet	16 August 2017	8	3,4,5	4,5

Table S-V. Comparison of potential evapotranspiration (PET) methods for seven weather stations located within or near to the study area for days representing the dry (1 May 2020), and wet (25 July 2020) seasons. Percent Errors between each of the simpler PET methods used in comparison with the Penman Monteith (PM) method are shown between parenthesis.

Weather station	Season	Potential evapotranspiration values (mm/day)			
		PM	Thornthwaite	Hargreaves	Turc
Coast					
Tapachula	Dry	5.44	5.45 (0.2)	5.98 (9.9)	5.04 (-7.4)
	Wet	4.79	5.30 (10.6)	5.96 (24.4)	5.10 (6.4)
Escuintla	Dry	4.34	5.07 (16.9)	6.42 (48.0)	5.52 (27.3)
	Wet	4.73	5.04 (6.6)	5.80 (22.7)	5.06 (7.0)
Sierra Madre					
El Triunfo	Dry	4.35	4.09 (-5.9)	4.19 (-3.7)	3.92 (-9.8)
	Wet	3.83	4.13 (7.8)	3.45 (-9.8)	3.29 (-13.9)
Volcán Tacaná	Dry	2.91	4.29 (47.4)	4.36 (50.0)	4.06 (39.7)
	Wet	1.36	4.19 (208.5)	3.35 (146.6)	3.21 (136.6)
Central depression/highlands					
Comitán	Dry	4.98	4.60 (-7.6)	4.55 (-8.6)	4.16 (-16.5)
	Wet	4.74	4.72 (-0.5)	4.78 (0.7)	4.33 (-8.7)
Tuxtla	Dry	5.28	4.92 (-6.7)	5.08 (-3.7)	4.51 (-14.5)
	Wet	4.90	4.99 (1.9)	5.65 (15.3)	4.96 (1.3)
Lagunas de Montebello	Dry	2.32	4.24 (82.5)	3.58 (54.1)	3.41 (46.7)
	Wet	3.34	4.42 (32.3)	4.72 (41.4)	4.35 (30.5)

Table S-VI. Changes in average daily temperature between 1990 and 2016 in the Central Depression (CD), Sierra Madre, and Coast regions of Chiapas, Mexico. Only weather stations with significant ($p < 0.05$) temperature trends are included. Significant temperature trends during the longer 1960-2016 period at the same stations are indicated in the far-right column (Trend since 1960), where data are available since 1960. Details of these trends are shown in Table S-VII.

Area	Weather station	Season	No. of data	Regression value	P-value	Change (°C)	Trend	Trend since 1960
CD	Catarinitas	Dry-cool	24	0.2336	0.018	2.7	Warm	
CD	Guadalupe Grijalva	Dry-cool	25	0.2009	0.047	-1.4	Cool	Yes
CD	Jaltenango	Dry-cool	27	0.3876	0.000	-1.1	Cool	
CD	Soyatitán	Dry-cool	27	0.646	<0.0001	-3.5	Cool	
CD	La Mesilla	Dry-cool	27	0.7258	0.05	-5.0	Cool	
CD	Tuxtla Gutiérrez (CFE)	Dry-cool	26	0.6112	<0.0001	-2.9	Cool	
CD	El Progreso	Dry-cool	27	0.558	<0.0001	2.0	Warm	Yes
CD	Catarinitas	Dry-hot	24	0.6103	0.001	6.0	Warm	
CD	Guadalupe Grijalva	Dry-hot	25	0.2772	0.003	2.5	Warm	No
CD	Jaltenango	Dry-hot	27	0.2017	0.033	-1.0	Cool	
CD	Soyatitán	Dry-hot	27	0.318	<0.0001	-1.5	Cool	
CD	La Mesilla	Dry-hot	27	0.4293	0.000	-3.1	Cool	
CD	Tuxtla Gutiérrez (CFE)	Dry-hot	26	0.3435	0.005	-2.2	Cool	
CD	El Progreso	Dry-hot	27	0.5245	<0.0001	2.5	Warm	No
CD	Catarinitas	Wet	24	0.5763	0.002	5.2	Warm	
CD	Guadalupe Grijalva	Wet	25	0.2547	0.023	3.1	Warm	No
CD	Jaltenango	Wet	27	0.3518	0.001	-1.4	Cool	
CD	Soyatitán	Wet	27	0.2293	<0.0001	-1.2	Cool	
CD	La Mesilla	Wet	27	0.28	0.009	-2.3	Cool	
CD	Tuxtla Gutiérrez (CFE)	Wet	26	0.3517	0.009	-1.8	Cool	
CD	El Progreso	Wet	27	0.6608	<0.0001	3.3	Warm	No
Sierra	Buenos Aires	Dry-cool	27	0.3447	0.003	-1.8	Cool	
Sierra	Frontera Amatenango	Dry-cool	26	0.4652	0.000	-3.5	Cool	No
Sierra	Motozintla	Dry-cool	26	0.3686	0.011	-1.9	Cool	No
Sierra	Ursulo Galvan	Dry-cool	23	0.3038	0.023	-1.8	Cool	
Sierra	Buenos Aires	Dry-hot	27	0.236	0.010	-0.9	Cool	
Sierra	Reforma II	Dry-hot	27	0.3049	0.008	1.2	Warm	
Sierra	Motozintla	Dry-hot	26	0.2678	0.025	-2.0	Cool	No
Sierra	Ursulo Galván	Dry-hot	23	0.2135	0.039	-1.3	Cool	
Sierra	Buenos Aires	Wet	27	0.108	0.023	-1.0	Cool	
Sierra	Ursulo Galván	Wet	23	0.5223	0.001	-2.2	Cool	
Coast	Pijijiapan	Dry-cool	27	0.2785	0.010	0.9	Warm	Yes
Coast	Tapachula	Dry-cool	27	0.878	<0.0001	2.5	Warm	Yes
Coast	Escuintla	Dry-cool	27	0.6687	<0.0001	2.8	Warm	Yes
Coast	Plan de Iguala	Dry-cool	26	0.1355	0.029	0.9	Warm	
Coast	Huehuetán	Dry-cool	27	0.5034	0.021	1.3	Warm	
Coast	Salvación	Dry-cool	27	0.5077	0.000	2.7	Warm	
Coast	Ignacio López Rayón	Dry-cool	26	0.5177	0.000	-1.8	Cool	Yes
Coast	Pijijiapan	Dry-hot	27	0.1376	0.05	0.7	Warm	Yes
Coast	Medio Monte	Dry-hot	26	0.2626	0.028	1.2	Warm	Yes
Coast	Tapachula	Dry-hot	27	0.6059	<0.0001	1.9	Warm	Yes
Coast	Escuintla	Dry-hot	27	0.5386	0.000	3.3	Warm	Yes
Coast	Salvacion	Dry-hot	25	0.3778	0.001	2.3	Warm	
Coast	Medio Monte	Wet	26	0.5173	0.000	1.1	Warm	Yes
Coast	Tapachula	Wet	27	0.7001	<0.0001	1.2	Warm	Yes
Coast	Escuintla	Wet	27	0.4543	0.003	2.1	Warm	Yes
Coast	Plan de Iguala	Wet	26	0.4562	0.001	1.5	Warm	
Coast	Salvación	Wet	26	0.6964	<0.0001	3.6	Warm	

Table S-VII. Significant ($p < 0.05$) trends in mean daily temperature and monthly rainfall during the periods of 1960-1989 and 1960-2016 at climate stations with significant trends during the 1990-2016 period, where data are available since 1960 in the regions of Pacific Chiapas.

Mean daily temperature Trends 1960-1989/1960-2016							
Weather station	Season/ month	Period	No. of data	Reg. value	P-value	Change (°C)	Trend
Guadalupe Grijalva	Dry-cool	1960–2016	54	0.1925	0.001	–1.6	Cool
Guadalupe Grijalva	Dry-hot	1960–1989	29	0.2994	0.001	–1.9	Cool
El Progreso	Dry-cool	1960–2016	57	0.0687	<0.0001	1.8	Warm
El Progreso	Dry-hot	1960–1989	30	0.4865	<0.0001	–1.9	Cool
Frontera Amatenango	Dry-cool	1960–1989	30	0.7776	<0.0001	5.3	Warm
Tapachula	Dry-cool	1960–2016	57	0.7538	<0.0001	5.2	Warm
Tapachula	Dry-hot	1960–2016	57	0.6872	<0.0001	4.8	Warm
Tapachula	Wet	1960–2016	57	0.773	<0.0001	4.6	Warm
Escuintla	Dry-cool	1960–1989	30	0.2315	0.011	1.5	Warm
Escuintla	Dry-cool	1960–2016	57	0.1313	0.002	1.3	Warm
Escuintla	Dry-hot	1960–2016	57	0.0544	0.040	0.9	Warm
Escuintla	Wet	1960–2016	57	0.1029	0.008	1.0	Warm
Ignacio López Rayón	Dry-cool	1960–1989	29	0.414	0.001	1.2	Warm
Ignacio López Rayón	Dry-cool	1960–2016	56	0.1284	0.027	–0.9	Cool
Ignacio López Rayón	Dry-hot	1960–2016	56	0.5215	<0.0001	–2.3	Cool
Ignacio López Rayón	Wet	1960–2016	56	0.4717	<0.0001	–1.5	Cool
Pijijiapan	Dry-cool	1960–1989	30	0.2979	0.017	1.3	Warm
Pijijiapan	Dry-cool	1960–2016	57	0.482	<0.0001	1.7	Warm
Pijijiapan	Dry-hot	1960–2016	57	0.0942	0.020	0.6	Warm
Medio Monte	Dry-cool	1960–1989	30	0.3287	0.001	0.8	Warm
Medio Monte	Dry-cool	1960–2016	57	0.4819	<0.0001	1.2	Warm
Medio Monte	Dry-hot	1960–1989	30	0.2458	0.006	–0.9	Cool
Medio Monte	Dry-hot	1960–2016	57	0.3215	0.000	1.7	Warm
Medio Monte	Wet	1960–2016	57	0.6236	<0.0001	1.6	Warm
Monthly rainfall trends 1960-1989/1960-2016						(mm)	
Metapa de Domínguez	September	1960–2016	53	0.031	0.1527	310	Wet

Table S-VIII. Mean and standard deviations of the Normalized Difference Vegetation Index (NDVI), Potential evapotranspiration (PET), and estimation of evapotranspiration (ET) values within the central depression, Sierra Madre, and coast regions of Chiapas, Mexico, during the transition from wet to dry, dry, and wet season of 1990, 2005, and 2020.

Region	Season	NDVI	PET (mm/day)	ET estimation (mm/day)
Central Depression	1990 transition	0.49 ± 0.19	3.80 ± 0.15	2.33 ± 0.92
	1990 dry	0.35 ± 0.14	5.39 ± 0.26	2.31 ± 0.94
	1990 wet	0.65 ± 0.16	4.81 ± 0.20	3.87 ± 0.97
	2005 transition	0.56 ± 0.19	3.66 ± 0.16	2.54 ± 0.83
	2005 dry	0.35 ± 0.16	5.30 ± 0.25	2.27 ± 1.00
	2005 wet	0.68 ± 0.16	4.63 ± 0.16	3.89 ± 0.91
	2020 transition	0.59 ± 0.22	3.49 ± 0.21	2.52 ± 0.95
	2020 dry	0.42 ± 0.17	5.20 ± 0.33	2.69 ± 1.11
	2020 wet	0.72 ± 0.19	4.42 ± 0.26	3.93 ± 1.03
Sierra Madre	1990 transition	0.72 ± 0.14	3.30 ± 0.36	2.94 ± 0.69
	1990 dry	0.64 ± 0.17	4.51 ± 0.51	3.58 ± 0.99
	1990 wet	0.71 ± 0.15	4.27 ± 0.39	3.75 ± 0.89
	2005 transition	0.75 ± 0.12	3.10 ± 0.40	2.89 ± 0.62
	2005 dry	0.63 ± 0.16	4.30 ± 0.55	3.36 ± 0.97
	2005 wet	0.74 ± 0.15	4.62 ± 0.16	3.59 ± 0.82
	2020 transition	0.81 ± 0.12	2.88 ± 0.45	2.89 ± 0.62
	2020 dry	0.71 ± 0.15	4.08 ± 0.60	3.57 ± 0.91
	2020 wet	0.77 ± 0.19	3.60 ± 0.57	3.43 ± 1.01
Coast	1990 transition	0.64 ± 0.21	3.09 ± 0.21	3.09 ± 0.88
	1990 dry	0.49 ± 0.20	5.07 ± 0.28	3.11 ± 1.15
	1990 wet	0.68 ± 0.17	4.76 ± 0.27	4.03 ± 0.92
	2005 transition	0.70 ± 0.19	3.76 ± 0.20	3.27 ± 0.79
	2005 dry	0.52 ± 0.21	4.93 ± 0.26	3.24 ± 1.14
	2005 wet	0.70 ± 0.18	4.57 ± 0.27	4.01 ± 0.90
	2020 transition	0.68 ± 0.23	3.68 ± 0.25	3.14 ± 0.95
	2020 dry	0.60 ± 0.23	4.78 ± 0.31	3.58 ± 1.21
	2020 wet	0.77 ± 0.19	4.36 ± 0.36	4.19 ± 0.93

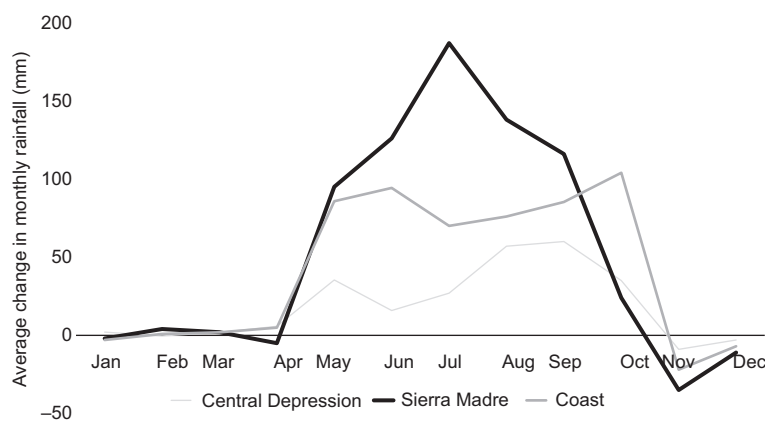


Fig. S-1. Regional averages of changes in monthly rainfall (mm) between 1990-2016 in the central depression, Sierra Madre and coast regions of Chiapas Mexico.