



Biomédica
ISSN: 0120-4157
ISSN: 2590-7379
Instituto Nacional de Salud

Jaramillo, Jimena; Solano, Juan M.; Aristizábal, Alejandra; Martínez, Juliana
Analysis of *SOD1* and *C9orf72* mutations in patients
with amyotrophic lateral sclerosis in Antioquia, Colombia
Biomédica, vol. 42, no. 4, 2022, pp. 623-632
Instituto Nacional de Salud

DOI: <https://doi.org/10.7705/biomedica.6060>

Available in: <https://www.redalyc.org/articulo.oa?id=84374116008>

- ▶ [How to cite](#)
- ▶ [Complete issue](#)
- ▶ [More information about this article](#)
- ▶ [Journal's webpage in redalyc.org](#)

The logo for Redalyc.org, featuring the text 'redalyc.org' in a stylized font with a red dot above the 'y'.

Scientific Information System Redalyc

Network of Scientific Journals from Latin America and the Caribbean, Spain and Portugal

Project academic non-profit, developed under the open access initiative

Original article

Analysis of *SOD1* and *C9orf72* mutations in patients with amyotrophic lateral sclerosis in Antioquia, Colombia

Jimena Jaramillo¹, Juan M. Solano², Alejandra Aristizábal², Juliana Martínez¹

¹Facultad de Ciencias y Biotecnología, Universidad CES, Medellín, Colombia

²Grupo de Investigación en Enfermedades Neuromusculares, Universidad de Antioquia, Medellín, Colombia

Introduction: Amyotrophic lateral sclerosis is a neurodegenerative disease with a possible multifactorial origin characterized by the progressive degeneration of motor neurons. There is a relatively high prevalence of this disease in Antioquia; however, there is no published genetic study to date in Colombia. Despite its unknown etiopathogenesis, more genetic risk factors possibly involved in the development of this disease are constantly found.

Objetives: To evaluate G93A and D90A mutations in *SOD1* gene and a short tandem repeat in *C9orf72* within a cohort of amyotrophic lateral sclerosis patients from Antioquia, Colombia.

Materials y methods: Thirty-four patients previously diagnosed with amyotrophic lateral sclerosis were included in the study. Peripheral blood samples were used for DNA extraction and genotyping.

Results: No mutations were found in *SOD1* (G93A and D90A) in any of the patients, while *C9orf72* exhibited an allele with a statistically significant high prevalence in the study sample (8 hexanucleotide repeats of CAGCAG).

Conclusions: These results suggest an association between this short tandem repeat (STR) in *C9orf72* and the presence of amyotrophic lateral sclerosis in the studied population. However, this association should be established in a larger sample size and with controls from the same population. In addition, there also seems to be a genetic anticipation effect for the disease regarding this locus, since patients with this genotype present an earlier onset.

Keywords: amyotrophic lateral sclerosis/genetics; neurodegenerative disease; genes; mutations

Análisis de mutaciones en los genes *SOD1* y *C9orf72* en pacientes con esclerosis lateral amiotrófica, Antioquia, Colombia

Introducción. La esclerosis lateral amiotrófica es una enfermedad neurodegenerativa con un posible origen multifactorial, caracterizado por una degeneración progresiva de las neuronas motoras. Hay una gran prevalencia relativa de esta enfermedad en Antioquia; sin embargo, no hay publicaciones de estudios genéticos en Colombia. A pesar de su etiopatogénesis desconocida, hay varios factores de riesgo genético que se encuentran constantemente en el desarrollo de esta enfermedad.

Objetivo. Evaluar las mutaciones G93A y D90A del gen *SOD1* y una repetición corta en tándem (*Short Tandem Repeat*, STR) en el locus *C9orf72*, en una cohorte de pacientes con esclerosis lateral amiotrófica en Antioquia, Colombia.

Materiales y métodos. Se incluyeron 34 pacientes previamente diagnosticados en el estudio. Una muestra de sangre periférica se usó para extraer el ADN y, posteriormente, genotificarlo.

Resultados. No se encontraron mutaciones en el gen *SOD1* (G93A y D90A), mientras que el *C9orf72* exhibe un alelo con una significativa prevalencia en los pacientes del estudio (8 repeticiones del hexanucleótido G₄C₂).

Conclusiones. Se sugiere una asociación entre la repetición en tándem en *C9orf72* y la presencia de la esclerosis lateral amiotrófica en la población estudiada. Sin embargo, se sugiere hacer estudios adicionales e incluir un grupo control de la misma población. Además, se detecta un fenómeno de anticipación genética de la enfermedad, dado que los pacientes con el alelo de 8 repeticiones en *C9orf72* presentan una edad temprana de aparición de los síntomas.

Palabras clave: Esclerosis lateral amiotrófica/genética; enfermedades neurodegenerativas; genes; mutaciones

Received: 31/03/2022

Accepted: 20/09/2022

Published: 22/10/2022

Citation:

Jaramillo J, Solano JM, Aristizabal A, Martínez J. Analysis of *SOD1* and *C9orf72* mutations in patients with amyotrophic lateral sclerosis in Antioquia, Colombia. *Biomédica*. 2022;42:623-32. <https://doi.org/10.7705/biomedica.6060>

Corresponding author:

Juliana Martínez, Calle 10A N° 22-04, Medellín, Colombia
Teléfono: (574) 444 0555, extensión 1546
jmartinezg@ces.edu.co

Author contributions:

Jimena Jaramillo: conceptualización, análisis de resultados, toma de muestras, análisis de laboratorio y escritura del artículo
Juan M. Solano: conceptualización, diagnóstico, contacto con pacientes, toma de muestra y análisis de resultados
Alejandra Aristizábal: diagnóstico, contacto con pacientes y toma de muestras
Juliana Martínez: conceptualización, análisis de resultados, análisis de laboratorio, validación, supervisión y escritura
Todos los autores participaron en la revisión del artículo.

Funding:

Financial funding was received from the *Dirección de Gestión del Conocimiento of Universidad CES* (project code INV032016008). Sponsors had no role in study design, data collection and analysis, decision to publish, or preparation of the manuscript.

Conflicts of interest:

The authors declare no conflict of interest.

Amyotrophic lateral sclerosis is a neurodegenerative disease characterized by the progressive death of motor neurons, producing muscular paralysis (1,2). Its clinical presentation is variable and depends on the anatomical site of onset and the type of motor neuron affected (3-5). There is no cure for amyotrophic lateral sclerosis and most of the patients die of respiratory failure 3 to 5 years after onset of symptoms (1,6). Amyotrophic lateral sclerosis etiology is not completely understood but, like other neurodegenerative diseases, it is thought to be the result of a complex interaction between multiple cellular mechanisms and environmental and genetic factors (7-9).

The genes with the strongest association to the development of both familiar and sporadic amyotrophic lateral sclerosis are *SOD1* and *C9orf72* (1,4,10). *SOD1* encodes the enzyme superoxide dismutase 1, responsible for the degradation of superoxide ions via reactions with zinc and copper ions (1,7,11), while *C9orf72* encodes a protein involved in both nuclear membrane transport and as a guanine nucleotide exchange factor that activates GTPases (5,12,13).

G93A and D90A mutations in *SOD1* cause oxidative stress and subsequent neuronal death (1,11,14). However, the most common genetic anomaly found in amyotrophic lateral sclerosis patients is a hexanucleotide sequence repetition or short tandem repeat (STR) in *C9orf72* gene, which explains 23.5 % of familial cases worldwide and up to 60 % in Spain (1,3,15). This *C9orf72* expansion causes a loss of the functional protein, progressively generating cellular death (5,12,13). Healthy individuals generally have a maximum of two repetitions (16), while a pathological form of the gene in amyotrophic lateral sclerosis patients typically has 20 or more hexanucleotide repetitions; however, the number of pathogenic repetitions varies depending on the population (17).

Amyotrophic lateral sclerosis incidence in Europe has been estimated at 2.8 cases per 100,000 people per year. While there is scarce data for Latin America, reports from some countries in the region suggest a range between 0.2 and 3.17 cases per 100,000 people per year. In Colombia, national reports propose its prevalence at 0.5 cases per 100,000 people (18), but in Antioquia (a state within Colombia), this prevalence is much higher, being reported as 4.9 cases per 100,000 people (19,20). Despite this, there are no published studies on genetics of amyotrophic lateral sclerosis in the country.

The population of Antioquia (Colombia) –due to historical processes of its foundation– may have up to 70% of an ancestral component of European origin; more precisely, from the Iberian peninsula (3,21,22). Additionally, Antioquia is considered a genetic isolate due to population bottlenecks and endogamy (23). Hence, this population and others with similar characteristics are recommended for the genetic analysis of complex diseases such as amyotrophic lateral sclerosis, since they tend to show lower etiologic heterogeneity (6,21). All of this could explain the relative high prevalence of this and other neurodegenerative diseases in Antioquia (19).

Knowing amyotrophic lateral sclerosis genetic traits provides advantages for the development of diagnostic and prognostic biomarkers with utility both in the clinical practice and in the development of therapeutic trials for this disease, so far incurable. To date there is no published genetic study of amyotrophic lateral sclerosis in Colombia. The purpose of this research was to evaluate the presence of D90A, G93A mutations in *SOD1* gene, as well as the hexanucleotide repetition in *C9orf72*, in amyotrophic lateral sclerosis patients in Antioquia (Colombia).

Materials and methods

Population sample

Patients found in the Neuromuscular Disorders Service at *Neuro Clínica IPS*, Medellín, Antioquia, who fulfilled the Escorial and Awaji-Shima diagnostic criteria (24), were included in the study. Only patients from Antioquia, diagnosed in 2017 and whose ancestors had been born in Antioquia, were included. Informed consent was obtained from all participants. This study was approved by the medical ethics committee of the *Universidad CES*.

DNA extraction and genotyping

DNA was extracted from blood samples using Wizard Genomic DNA Purification Kit™ (Promega, USA), following manufacturer's instructions.

For the genotyping of *SOD1* variants, *D90A* and *G93A* (SNP tags *rs80265967*; *rs121912438*), positive and negative controls were used besides the samples to be evaluated. With the purpose of confirming the reproducibility of the genotypes obtained through the KASP-PCR methodology (performed by LGC Genomics Inc., USA), 10% of the data were repeated for blind evaluation. Conventional PCR was performed to genotype the *C9orf72* STR, using the set of primers (FAM 5'-CAAGGAGGGAAACAACCGCAGCC-3' and R 5'-GCAGGCACCGCAACCGCAG-3') and the methodology described by DeJesús-Hernández, *et al.*, (2011) (25). DNA amplification was confirmed through electrophoresis in 1% agarose gel stained with ethidium bromide. Alleles were resolved through capillary electrophoresis using an ABI PRISM 3130 Genetic Analyzer™ (IdentiGEN Laboratory, Colombia).

Statistical analysis

Correlation between the amyotrophic lateral sclerosis status and allele variants was performed descriptively and mathematically using Fisher's exact test (26). Population genetic parameters, such as allele and genotype frequencies as well as Hardy-Weinberg equilibrium, were also calculated using Genepop, version 4.2 (GENEPOP, RRID:SCR_009194) (27,28). The endogamy model was evaluated through a χ^2 test and the selection model through calculations for different selection coefficients. All of this was done considering that by having chosen individuals already diagnosed with amyotrophic lateral sclerosis, an artificial selection was exerted over the study sample.

Results

Out of a total of 63 cases with confirmed diagnosis of amyotrophic lateral sclerosis during that year, 34 patients, evaluated and followed during 2017, were included in the study. The sample size of this study represents 54% of amyotrophic lateral sclerosis cases diagnosed in 2017 in Antioquia, Colombia.

Clinical characteristics

Approximately 32% of the patients presented with established disease of more than 5 years of duration. No patient had other family members with amyotrophic lateral sclerosis, although 26% reported a family history of other neurodegenerative diseases. In 19% of the cases, the disease began before 35 years of age.

Table 1 shows the characteristics of the patients classified by age ranges of onset of symptoms. Earlier ages of onset of symptoms correlated with

longer duration of the disease (coefficient correlation=-0.37) (p=0.03). Categorization by age group was done to show the difference between the age at onset of amyotrophic lateral sclerosis in the population of Antioquia and the usual age described in other populations (figure 1).

Allele frequencies

Regarding *SOD1* gene mutations G93A and D90A, all the evaluated patients presented the ancestral genotypes (GG and AA, respectively); thus, being monomorphic loci.

For the *C9orf72* gene, 6 different alleles were found in 33 analyzed samples (table 2). The allele of 8 repeats of the hexanucleotide expansion GGGGCC was found in 84.85% (28 of 33 people) of the samples from patients with amyotrophic lateral sclerosis (figure 2).

Table 1. Clinical characteristics of 32 amyotrophic lateral sclerosis patients grouped by age

Age of onset (years)	Number of patients	Spinal onset	Family history of NDD	Tobacco use	Exposure to substances*	Average disease duration (months)
20-35	6	4	1	0	3	78
36-50	3	3	1	0	1	77
51-65	17	13	5	13	6	52
66-80	6	2	2	2	2	34

NDD: Neurodegenerative diseases

* Alcohol, cocaine derivatives, solvents and detergents

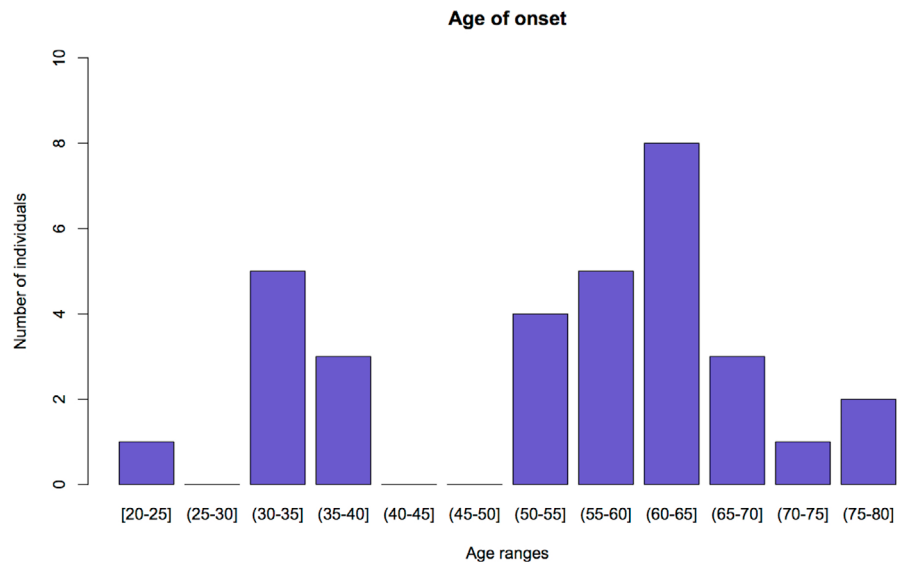


Figure 1. Age of onset and number of patients. The graph shows the distribution of patients according to the age at onset of ALS, presented as age ranges. The y-axis represents the number of patients and the x-axis represents age ranges. Figure done using R version 3.3.2 (R Project for Statistical Computing, RRID:SCR_001905).

Table 2. *C9orf72* locus genotypes and number of repeats

Genotypes	Observed	Expected
(CAGCAG)1/(CAGCAG)8	12	8.12
(CAGCAG)8/(CAGCAG)8	16	14.55
(CAGCAG)11/(CAGCAG)12	1	0.02
(CAGCAG)13/(CAGCAG)13	3	0.32
(CAGCAG)13/(CAGCAG)14	1	0.11

GeneMapper ID v3.2

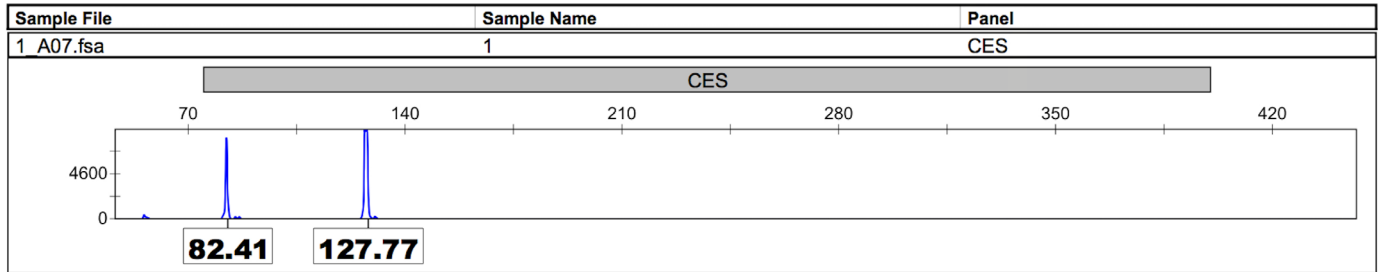


Figure 2. C9orf72 alleles. Capillary electrophoresis results, using an ABI PRISM genetic analyzer. Alleles are represented in the x-axis with relative fluorescence units (RFUs) shown in the y-axis. Alleles are identified with number of base pairs: Allele 1 (82.41pb); Allele 2 (127.77pb).

Table 3. Observed frequencies versus calculated model frequencies for each genotype

Genotype	Observed frequency	Expected frequency with S=0.9 and a dominant model for allele 2
(CAGCAG)1/(CAGCAG)8	0.3636	0.3195
(CAGCAG)8/(CAGCAG)8	0.4848	0.5858
(CAGCAG)11/(CAGCAG)12	0.0303	0.0001
(CAGCAG)13/(CAGCAG)13	0.0909	0.0015
(CAGCAG)13/(CAGCAG)14	0.0303	0.0004

The C9orf72 STR was not found to be in Hardy-Weinberg disequilibrium ($p < 0.01$). SOD1 variants could not be evaluated with this parameters due to the finding of ancestral (no mutated) genotype in all the patients. Upon performing the calculations to evaluate the selection model against the genotypes not carrying allele of 8 repeats with different values of selection coefficient, it was found that when selection coefficient was 0.9 the genotype frequencies are similar to those observed in the data from the patients (table 3).

Correlations between variables and the predominant genotype

Upon performing Fisher's exact test, it was found: i) that there is a greater frequency of genotypes with 8 repeats allele in patients below 65 years old ($\chi^2=6.72$; $p < 0.01$); ii) this genotype is more frequent in patients with spinal onset ($\chi^2=8.90$; $p < 0.01$); and iii) that there is no difference between its distribution and the disease duration ($\chi^2=0.22$; $p=0.64$).

Discussion

This study evaluated the association between variants in SOD1 and C9orf72 and the occurrence of amyotrophic lateral sclerosis, finding the existence of an 8 repeat allele in the C9orf72 locus with a high frequency amongst amyotrophic lateral sclerosis cases in Antioquia, Colombia. All cases included in this study were sporadic amyotrophic lateral sclerosis diagnosed at young ages (< 65 years old) compared to the average of 65 years of age reported in other populations. None of the patients had a history of amyotrophic lateral sclerosis in their family. This is of remarkable importance since it is very likely that the genetic bases differ between familial and sporadic amyotrophic lateral sclerosis (29).

In this investigation we had 78.13% of patients whose age of disease onset was between 20 and 65 years of age (figure 1) and an average of 54 ± 15.23 years which differs from what has been reported in the literature (65 years in other populations) (30). The duration of the disease in the study group was higher than that reported in global literature, which can be explained by a larger proportion of young patients. As it has been described, an earlier age at

onset of the symptoms relates to an increased life expectancy of the patients (31,32); this phenomenon was observed in this research.

Although environmental factors that explain the particularities of the group of patients must always be taken into account, it is possible that genetics has a crucial role. First, Antioquia is a genetic isolate that has experienced population bottlenecks and endogamy, which produce a reduced effect of etiologic heterogeneity and leads to an increase in the prevalence of hereditary or rare diseases (21,33). Additionally, the action of a phenomenon called genetic anticipation, which produces increased severity of a phenotype and/or reduces the onset time, can also be involved (34).

In general, this occurs when there is an expansion in DNA triplet repeats, as in the case of *C9orf72* marker (17). Also, hexanucleotide repeat elongation with variants in other amyotrophic lateral sclerosis causative genes are associated with an earlier age of onset, suggesting that both mutations affect this feature (35). Allele with 8 CAGCAG repeats present in either homozygous or heterozygous condition, was found in 88.46% of the patients, suggesting a dominant allele effect on the amyotrophic lateral sclerosis phenotype. This same gene has been previously associated with amyotrophic lateral sclerosis. It has been proposed that the *C9orf72* hexanucleotide repeat could be considered the cause of amyotrophic lateral sclerosis at around 20-25 repeats (25,36); however, in recent research studies it has been reported that the number of repeats considered pathologic varies according to the population (17,19,37).

Given the unusual reported genetic characteristics of the population of Antioquia, we do not rule out a phenotypic association between amyotrophic lateral sclerosis and a lower number of repeats than the one reported for the *C9orf72* gene, or the possibility of this allele to be a risk factor for the disease. For this reason, it is necessary to complement the current study with a control population. This will allow to determine the distribution of alleles in the general population and confirm that the registered observations are not due to chance alone.

Despite that mutations G93A and D90A of the *SOD1* gene were expected to be found, they were not present in any of the patients of the studied sample. Possible hypotheses that could explain this phenomenon are: i) that migration of these mutations to this population is scarce or non-existent; or ii) that the mutations are expressing a different phenotype due to additional genetic and environmental factors (3,4,22).

Given that the *C9orf72* locus was, of the three studied in the diagnosed patients, the polymorphism related to amyotrophic lateral sclerosis in Antioquia, corresponding analyses were performed. It was found that the data do not fit the Hardy-Weinberg equilibrium model (table 3), which could be indicative of a direct association with amyotrophic lateral sclerosis (38,39). It is known that when an allele/genotype is associated to a phenotype this one can be augmented (risk) or diminished (protection) causing a deviation from the model, as shown in our research (40).

However, there are multiple causes for which a population may be out of Hardy-Weinberg equilibrium, such as selection, endogamy, genetic flux or genotyping errors (39,40). However, several of them can be ruled out by the use of experimental controls and by the differences between observed and expected heterozygotes, which were not significant in our data. With these alleles, 21 possible combinations could have been generated, but only 5 were

found in the study population. This suggests a selection effect that was done with the samples (previously diagnosed patients) reinforcing the possibility of an association between this loci and the occurrence of amyotrophic lateral sclerosis.

Furthermore, *C9orf7* allele with 8 CAGCAG repeats was most commonly observed in patients below 65 years old than in their older counterparts (>65 years old), supporting the effect of genetic anticipation in this population.

In our sample, patients with this allele were more likely to have an spinal onset. This predominance of spinal over bulbar amyotrophic lateral sclerosis in our cohort can be explained by the small sample size, since in other international reports this variant has been associated with both spinal and bulbar amyotrophic lateral sclerosis (16). The number of hexanucleotide repeats in *C9orf72* that has been considered pathologic or as the cause of amyotrophic lateral sclerosis is of 20-25 (25,36).

In our study, the allele candidate for being related to the disease has only 8 repeats. While this variant has not been associated previously with amyotrophic lateral sclerosis cases, the relationship of the disease with the number of repeats is highly variable between different populations, lacking a definitive correlation between a specific number and the pathology (37). Analyses of common causal variants in different populations are important in pathophysiology investigation of amyotrophic lateral sclerosis in each population would have valuable implications (41,42).

This, along with the complete absence of G93A and D90A mutations of *SOD1* in the patients, is an unexpected and relevant finding about amyotrophic lateral sclerosis genetics, its physiopathology and other neurodegenerative conditions. It is therefore necessary to confirm whether this genotype of 8 repeats in *C9orf72* is pathologic in our population and to determine its importance as a diagnostic biomarker or as a risk factor for amyotrophic lateral sclerosis, as it is currently being done in other populations (43-45).

It is also relevant to define the influence of homozygosity or heterozygosity of these repetitions as a disease risk factor. Considering the significance of these findings for amyotrophic lateral sclerosis genetics and their clinical implications, it is necessary to carry out further studies to confirm the hypotheses we have presented.

Acknowledgements

We thank *Universidad CES* for its support in the realization of this work; Andrés Pareja López, Nicolás González Castro and Pablo Andrés Guzmán for their comments on the manuscript; Adriana Monsalve and Eliana Giraldo for their help in the collection of the samples. We also thank *Neuro Clínica IPS* in Medellín for their willingness to review clinical records and for cooperation for clinical evaluations and patient recruitment.

We thank the non-for-profit organization Huitaca (www.projecthuitaca.org) for providing English editing services to the final draft of this manuscript. Finally, we thank all the patients who voluntarily participated and allowed this study to be carried out.

References

1. Yamashita S, Ando Y. Genotype-phenotype relationship in hereditary amyotrophic lateral sclerosis. *Transl Neurodegener.* 2015;4:13. <https://doi.org/10.1186/s40035-015-0036-y>

2. Turner MR, Verstraete E. What does imaging reveal about the pathology of amyotrophic lateral sclerosis? *Curr Neurol Neurosci Rep.* 2015;15:45. <https://doi.org/10.1007/s11910-015-0569-6>
3. Hamosh A. Online Mendelian Inheritance in Man (OMIM), a knowledge base of human genes and genetic disorders. *Nucleic Acids Res.* 2004;33:D514-7. <https://doi.org/10.1093/nar/gki033>
4. Yu W, Gwinn M, Clyne M, Yesupriya A, Khoury MJ. A navigator for human genome epidemiology. *Nat Genet.* 2008;40:124-5. <https://doi.org/10.1038/ng0208-124>
5. Rohrer JD, Isaacs AM, Mizielinska S, Mead S, Lashley T, Wray S, *et al.* *C9orf72* expansions in frontotemporal dementia and amyotrophic lateral sclerosis. *Lancet Neurol.* 2015;14:291-301. [https://doi.org/10.1016/S1474-4422\(14\)70233-9](https://doi.org/10.1016/S1474-4422(14)70233-9)
6. Wijesekera LC, Leigh PN. Amyotrophic lateral sclerosis. *Orphanet J. Rare Dis.* 2009;4:3. <https://doi.org/10.1186/1750-1172-4-3>
7. Ajroud-Driss S, Siddique T. Sporadic and hereditary amyotrophic lateral sclerosis (ALS). *BBA -Mol Basis of Dis.* 2015;1852:679-84. <https://doi.org/10.1016/j.bbadis.2014.08.010>
8. De Jong SW, Huisman MHB, Suttedja NA, van der Kooij AJ, de Visser M, Schelhaas HJ, *et al.* Smoking, alcohol consumption, and the risk of amyotrophic lateral sclerosis: A population-based study. *Am J Epidemiol.* 2012;176:233-9. <https://doi.org/10.1093/aje/kws015>
9. Saez-Atienzar S, Bandres-Ciga S, Langston RG, Kim JJ, Choi SW, Reynolds RH, *et al.* Genetic analysis of amyotrophic lateral sclerosis identifies contributing pathways and cell types. *Sci Adv.* 2021;7:eabd9036. <https://doi.org/10.1126/sciadv.abd9036>
10. Özoğuz A, Uyan Ö, Birdal G, Iskender C, Kartal E, Lahut S, *et al.* The distinct genetic pattern of ALS in Turkey and novel mutations. *Neurobiol Aging.* 2015;36:1764.e9-1764.e18. <https://doi.org/10.1016/j.neurobiolaging.2014.12.032>
11. Bertolin C, D'Ascenzo C, Querin G, Gaiani A, Boaretto F, Salvoro C, *et al.* Improving the knowledge of amyotrophic lateral sclerosis genetics: Novel *SOD1* and *FUS* variants. *Neurobiol Aging.* 2014;35:1212. <http://doi.org/10.1016/j.neurobiolaging.2013.10.093>
12. Byrne S, Elamin M, Bede P, Shatunov A, Walsh C, Corr B, *et al.* Cognitive and clinical characteristics of patients with amyotrophic lateral sclerosis carrying a *C9orf72* repeat expansion: A population-based cohort study. *Lancet Neurol.* 2012;11:232-40. [https://doi.org/10.1016/S1474-4422\(12\)70014-5](https://doi.org/10.1016/S1474-4422(12)70014-5)
13. Ugolino J, Ji YJ, Conchina K, Chu J, Nirujogi RS, Pandey A, *et al.* Loss of *C9orf72* enhances autophagic activity via deregulated mTOR and TFEB signaling. *PLOS Genet.* 2016;12:e1006443. <https://doi.org/10.1371/journal.pgen.1006443>
14. Isobe T, Tooi N, Nakatsuji N, Aiba K. Amyotrophic lateral sclerosis models derived from human embryonic stem cells with different superoxide dismutase 1 mutations exhibit differential drug responses. *Stem Cell Res.* 2015;15:459-68. <https://doi.org/10.1016/j.scr.2015.09.006>
15. Mancuso R, Navarro X. Amyotrophic lateral sclerosis: Current perspectives from basic research to the clinic. *Prog Neurobiol.* 2015;133:1-26. <https://doi.org/10.1016/j.pneurobio.2015.07.004>
16. Renton AE, Majounie E, Waite A, Simón-Sánchez J, Rollinson S, Gibbs JR, *et al.* A hexanucleotide repeat expansion in *C9orf72* is the cause of chromosome 9p21-Linked ALS-FTD. *Neuron.* 2011;72:257-68. <https://doi.org/10.1016/j.neuron.2011.09.010>
17. Ng ASL, Tan EK. Intermediate *C9orf72* alleles in neurological disorders: Does size really matter? *J Med Genet.* 2017;54:591-7. <https://doi.org/10.1136/jmedgenet-2017-104752>
18. Ospina ML, Prieto FE, Pachecho O, Quijano H, Lozano N, Gomez S, *et al.* Boletín epidemiológico semana 5. 2019. Fecha de consulta: 4 de febrero de 2021. Disponible en: <https://www.ins.gov.co/buscador-eventos/BoletinEpidemiologico/2019%20Bolet%C3%ADn%20epidemiol%C3%B3gico%20semana%205.pdf>
19. Zapata-Zapata C, Franco-Dáger E, Solano-Atehortúa J, Ahunca-Velásquez L. Esclerosis lateral amiotrófica: actualización. *IATREIA.* 2016;29:194-205. <https://doi.org/10.17533/udea.iatreia.v29n2a08>
20. Zapata-Zapata CH, Dáger EF, Aguirre-Acevedo DC, de Carvalho M, Solano-Atehortúa J. Prevalence, incidence, and clinical-epidemiological characterization of amyotrophic lateral sclerosis in Antioquia: Colombia. *Neuroepidemiology.* 2020;54:251-8. <https://doi.org/10.1159/000504549>

21. Nikali K, Vanegas JJ, Burley MW, Martínez J, López LM, Bedoya G, *et al.* Extensive founder effect for distal renal tubular acidosis (dRTA) with sensorineural deafness in an isolated South American population. *Am J Med Genet.* 2008;146A:2709-12. <https://doi.org/10.1002/ajmg.a.32495>
22. Carvajal-Carmona LG, Soto ID, Pineda N, Ortiz-Barrientos D, Duque C, Ospina-Duque J, *et al.* Strong amerind/white sex bias and a possible sephardic contribution among the founders of a population in Northwest Colombia. *Am J Hum Genet.* 2000;67:1287-95. [https://doi.org/10.1016/s0002-9297\(07\)62956-5](https://doi.org/10.1016/s0002-9297(07)62956-5)
23. Arcos-Burgos M, Muenke M. Genetics of population isolates. *Clin Genet.* 2002;61:233-47. <https://doi.org/10.1034/j.1399-0004.2002.610401.x>
24. De Carvalho M, Dengler R, Eisen A, England JD, Kaji R, Kimura J, *et al.* Electrodiagnostic criteria for diagnosis of ALS. *Clin Neurophysiol.* 2008;119:497-503. <https://doi.org/10.1016/j.clinph.2007.09.143>
25. DeJesús-Hernández M, Mackenzie IR, Boeve BF, Boxer AL, Baker M, Rutherford NJ, *et al.* Expanded GGGGCC hexanucleotide repeat in noncoding region of C9orf72 causes chromosome 9p-Linked FTD and ALS. *Neuron.* 2011;72:245-56. <https://doi.org/10.1016/j.neuron.2011.09.011>
26. Martín Andrés A. Entry Fisher's exact and Barnard's tests. In: Kotz S, Johnson NL, Read CB, editors. *Encyclopedia of Statistical Sciences.* New York, NY: Wiley-Interscience; 1998. p. 250-8. <https://doi.org/10.1002/0471667196.ess0642.pub2>
27. Rousset F. genepop'007: A complete re-implementation of the genepop software for Windows and Linux. *Mol Ecol Resour.* 2008;8:103-6. <https://doi.org/10.1111/j.1471-8286.2007.01931.x>
28. Raymond M, Rousset F. GENEPOP (Version 1.2): Population genetics software for exact tests and ecumenicism. *J Hered.* 1995;86:248-9. <https://doi.org/10.1093/oxfordjournals.jhered.a111573>
29. Couthouis J, Raphael AR, Daneshjou R, Gitler AD. Targeted exon capture and sequencing in sporadic amyotrophic lateral sclerosis. *PLoS Genet.* 2014;10:e1004704. <https://doi.org/10.1371/journal.pgen.1004704>
30. Marin B, Boumédiène F, Logroscino G, Couratier P, Babron MC, Leutenegger AL, *et al.* Variation in worldwide incidence of amyotrophic lateral sclerosis: A meta-analysis. *Int J Epidemiol.* 2017;46:57-74. <https://doi.org/10.1093/ije/dyw061>
31. Chiò A, Logroscino G, Hardiman O, Swingler R, Mitchell D, Beghi E, *et al.* Prognostic factors in ALS: A critical review. *Amyotroph Lateral Scler.* 2009;10:310-23. <https://doi.org/10.3109/17482960802566824>
32. Logroscino G, Piccininni M. Amyotrophic lateral sclerosis descriptive epidemiology: The Origin of geographic difference. *Neuroepidemiology.* 2019;52:93-103. <https://doi.org/10.1159/000493386>
33. Carvajal-Carmona LG, Ophoff R, Service S, Hartiala J, Molina J, León P, *et al.* Genetic demography of Antioquia (Colombia) and the Central Valley of Costa Rica. *Hum Genet.* 2003;112:534-41. <https://doi.org/10.1007/s00439-002-0899-8>
34. Chiurazzi P, Oostra BA. Expanding Mutations/Genetic Anticipation. *Encyclopedia of Life Sciences.* Chichester, UK: John Wiley & Sons, Ltd.; 2006. <https://doi.org/10.1038/npg.els.0001463>
35. Suzuki N, Nishiyama A, Warita H, Aoki M. Genetics of amyotrophic lateral sclerosis: Seeking therapeutic targets in the era of gene therapy. *J Hum Genet.* 2022. <https://doi.org/10.1038/s10038-022-01055-8>
36. Byrne S, Heverin M, Elamin M, Walsh C, Hardiman O. Intermediate repeat expansion length in C9orf72 may be pathological in amyotrophic lateral sclerosis. *Amyotroph Lateral Scler Frontotemporal Degener.* 2014;15:148-50. <https://doi.org/10.3109/21678421.2013.838586>
37. Yang Q, Jiao B, Shen L. The development of C9orf72-related amyotrophic lateral sclerosis and frontotemporal dementia disorders. *Front Genet.* 2020. <https://doi.org/10.3389/fgene.2020.562758>
38. Mitteroecker P, Cheverud JM, Pavlicev M. Multivariate analysis of genotype-phenotype association. *Genet.* 2016;202:1345-63. <https://doi.org/10.1534/genetics.115.181339>

39. Namipashaki A, Razaghi-Moghadam Z, Ansari-Pour N. The essentiality of reporting hardy-weinberg equilibrium calculations in population-based genetic association studies. *Cell J*. 2015;17:187-92. <https://doi.org/10.22074/cellj.2016.3711>
40. Hedrick PW. *Genetics of populations*. 4th edition. Sudbury, MA: Jones and Bartlett Publishers; 2011. p. 65-109.
41. Nakamura R, Misawa K, Tohnai G, Nakatochi M, Furuhashi S, Atsuta N, *et al*. A multi-ethnic meta-analysis identifies novel genes, including ACSL5, associated with amyotrophic lateral sclerosis. *Commun Biol*. 2020;3:526. <https://doi.org/10.1038/s42003-020-01251-2>
42. Mesaros M, Lenz S, Lim W, Brown J, Drury L, Roggenbuck J. Investigating the genetic profile of the amyotrophic lateral sclerosis/frontotemporal dementia (ALS-FTD) continuum in patients of diverse race, ethnicity and ancestry. *Genes (Basel)*. 2021;13:76. <https://doi.org/10.3390/genes13010076>
43. Štětkařová I, Ehler E. Diagnostics of amyotrophic lateral sclerosis: Up to date. *Diagnostics (Basel)*. 2021;11:231. <https://doi.org/10.3390/diagnostics11020231>
44. Huang F, Zhu Y, Hsiao-Nakamoto J, Tang X, Dugas JC, Moscovitch-Lopatin M, *et al*. Longitudinal biomarkers in amyotrophic lateral sclerosis. *Ann Clin Transl Neurol*. 2020;7:1103-16. <https://doi.org/10.1002/acn3.51078>
45. Álvarez-Fernández A, Bernal MJ, Fradejas I, Martín Ramírez A, Md Yusuf NA, Lanza M, *et al*. KASP: A genotyping method to rapid identification of resistance in *Plasmodium falciparum*. *Malar J*. 2021;20:16. <https://doi.org/10.1186/s12936-020-03544-7>