



Anais da Academia Brasileira de Ciências

ISSN: 0001-3765

aabc@abc.org.br

Academia Brasileira de Ciências

Brasil

Mandarim-de-Lacerda, Carlos A.
Stereological tools in biomedical research
Anais da Academia Brasileira de Ciências, vol. 75, núm. 4, dezembro, 2003, pp. 469-486
Academia Brasileira de Ciências
Rio de Janeiro, Brasil

Available in: <http://www.redalyc.org/articulo.oa?id=32775406>

- How to cite
- Complete issue
- More information about this article
- Journal's homepage in redalyc.org

redalyc.org

Scientific Information System
Network of Scientific Journals from Latin America, the Caribbean, Spain and Portugal
Non-profit academic project, developed under the open access initiative



Stereological tools in biomedical research

CARLOS A. MANDARIM-DE-LACERDA

Laboratório de Morfometria e Morfologia Cardiovascular, Departamento de Anatomia,
Instituto de Biologia, Universidade do Estado do Rio de Janeiro, 20551-030 Rio de Janeiro, Brasil

*Manuscript received on September 2, 2003; accepted for publication on September 5, 2003;
presented by LUCIA MENDONÇA PREVATO*

ABSTRACT

Stereological studies are more and more frequent in literature, particularly in the development/evolution, pathology, and neurosciences areas. The stereology challenge is to understand the structural inner three-dimensional arrangement based on the analysis of the structure slices only showing two-dimensional information. Cavalieri and Scherle's methods to estimate volume, and Buffon's needle problem, are commented in the stereological context. A group of actions is needed to appropriately quantify morphological structures (unbiased and reproducibly), e.g. sampling, isotropic and uniform randomly sections (Delesse's principle), and updated stereological tools (disector, fractionator, nucleator, etc). Through the correct stereology use, a quantitative study with little effort could be performed: efficiency in stereology means a minimum slices sample counting (little work), low cost (slices preparation), but good accuracy. In the present text, a short review of the main stereological tools is done as a background basis to non-expert scientists.

Key words: morphometry, stereology, volume density, surface density, length density, *disector*, *fractionator*.

INTRODUCTION

Morphologists are traditionally interested in form and composition of structures in macro, meso, microscopic, and ultrastructural levels. Recently, morphologists have benefited by the use of genetic and molecular techniques to help the understanding of their problems thus improving biological and biomedical researches. However, questions concerning quantitative alterations of tissues, cells or cellular organelles (which frequently appear in adaptation, evolution or pathology of an organism), as well as a better correlation between morphology and function, need a quantitative approach to be well understood (Weibel 1989, Mayhew 1992, Roberts et al. 2000, Andersen and Pakkenberg 2003). The development of a quantitative structural platform for

experimental biology, extending across a hierarchy of sizes ranging from molecules to organisms, has been punctuated by a series of major achievements over the last years (Bolender 1992).

The stereology challenge is to understand the structural inner three-dimensional arrangement based on the analysis of the structure slices that show only two-dimensional information (Figure 1); for that stereological principles take into consideration geometry and probability statistics (Weibel 1979, Jensen 1998).

In despite of the argument about nomenclature – morphometry and stereology could denominate the same method (Aherne and Dunnill 1982) – most authors consider morphometry a two-dimensional quantitative method that uses a caliper (mainly a caliper micrometer, a gauge with a calibrated mi-

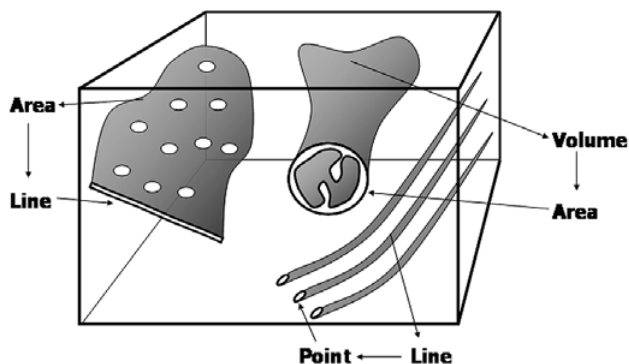


Fig. 1 – Observation of three-dimensional structures in two-dimensional slices. Volumes (mitochondria) appears as area, areas (endoplasmic reticulum) appears as line, and lines (microtubules) appears as point.

crometer screw for the measurement of thin objects under microscopic observation). On the contrary, stereology does not use a caliper (and does not perform a direct measurement), but a test-system usually composed by test-points, test-lines over a known frame (or test-area). Major differences between morphometry and stereology are summarized in Table I (Mandarim-de-Lacerda 1999).

Morphometry determines lengths, perimeters, areas, and benefits of image analysis software's facilities. Stereology estimates densities; the most interesting are the densities per volume: volume density (V_v), length density (L_v), surface density (S_v), and numerical density (N_v). Densities per area can also be estimated and informative: area density (A_A) and numerical density per area (N_A or Q_A) are more frequently estimated (Pereira and Mandarim-de-Lacerda 2001b).

All indices are estimated by the application of specific formulas that will be better demonstrated in the sequence. However, the accuracy of calculations is based on the statistics principles (sample size, randomization, and isotropy). The aim of the sampling design for stereology is to obtain the maximal amount of quantitative structural information at a given total cost or effort. Principles of such optimal designs and methods for generating them will be

discussed. In general, the variation between different individuals (the biological variation) is the major determinant of overall efficiency, whereas the variation between single microscopic features is unimportant. However, spend time and/or money in order to increase the precision of the individual measurements is irrational in almost all studies emphasizing biological results. This could be summarized by the sentence “do more less well” (Gundersen and Østerby 1981).

In the last 50 years, stereological studies have appeared in literature more and more frequently, the first studies being based on pioneers (Chalkley 1943, Abercrombie 1946, Chalkley et al. 1949, Weibel and Gomez 1962, Weibel et al. 1966). The so called “new stereology” was developed in the XXth century's eighties, a collection of procedures turning stereology easier and unbiased (Gundersen et al. 1983, Sterio 1984, Gundersen 1988) – in reality, the question of bias and stereology is still under discussion, but new techniques make stereology more consistent (Hedreen 1999, Baddeley 2001, von Bartheld 2002, Gardella et al. 2003). A simple explanation about accuracy and bias in quantitative studies can be verified in the schema of Figure 2.

Stereology is dynamic and full of perspectives for the future, new approaches to old questions still

TABLE I

Morphometry vs. Stereology (*some systems have been announced to do automatic stereology like *C.A.S.T.* – www.cast-grid.com, *Stereologer* – www.stereologer.com or *Bioquant* – www.bioquant.com).

Characteristics	Morphometry	Stereology
macro, meso, micro levels	yes	yes
measurement in the plane	yes	no
3-D information	no	yes
caliper	yes	no
test-system	no	yes
unit	mm	mm/mm ³
slices of the structure	not necessarily	yes
formulas	simple	complex
probabilistic statistics	no	yes
image analysis facilities	usually yes	usually no*
statistics	parametric	non parametric

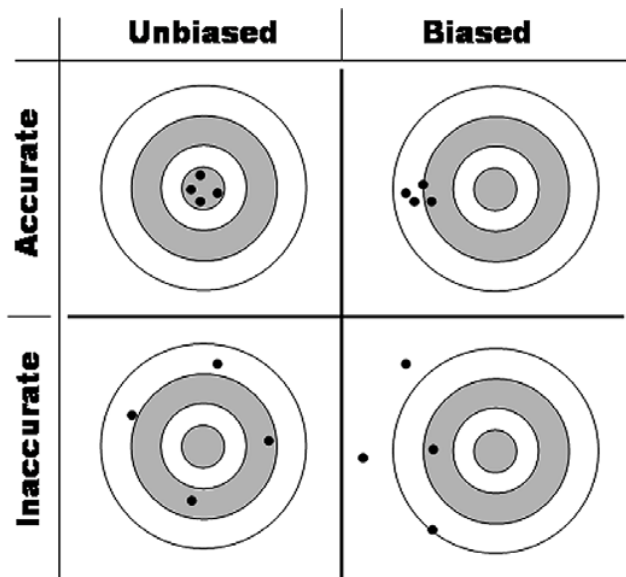


Fig. 2 – Schematic illustration of the difference between accuracy and bias. The top row of targets shows accuracy that is the hits are closely clustered together. The bottom row shows inaccuracy and there is a marked scatter of hits. In the left hand column the average of the cluster of hits tends towards the bull's-eye, which means that they are unbiased. The right hand column shows the converse case, these hits are biased (based on Howard and Reed 1998).

stimulates stereologists to test possibilities, an exciting example is the “virtual isotropic spheres probes” technique, because the surface of a sphere is perfectly isotropic, all intersections of linear features with the surface have an equal probability (Cruz-Orive and Gual-Arnau 2002, Mouton et al. 2002).

It must be considered that paraffin – or similar embedding media like Paraplast or Paraplast Plus – causes an intrinsic distortion of structures: the shrinkage caused by fixation, dehydration and paraffin infiltration (Figure 3), and compression caused by the knife action in microtomy direction (Figure 4) (Weibel 1979). In paraffin embedded material shrinkage can be around 25% and compression around 10% relative to the fresh material (Mandarim-de-Lacerda et al. 1985, Mandarim-de-Lacerda and Penteado 1988). Despite this, it is possible to determine accurate quantities of morphological structures in tissue or cell levels mathematically enlarging the results by multiplying the measurement by the shrinkage and the compression factors previously determined (Mandarim-de-Lacerda et al. 1987). However, the scope of the stereology is far to be a “magic” number, an “exact” quantity of cells. The “exact” in this case has a statistical point of view. Therefore, the study frequently tries to compare quantities among different groups, the material being prepared similarly. Through the comparison, if the shrinkage and the compression are the same in all groups, its correction might be not necessary (all mathematical correction is inaccurate; sometimes it leads to more bias, becoming more difficult to interpret in biological terms, than not corrected material).

It is easy to understand how morphometry and/or stereology can be useful in studies regarding the development (Mandarim-de-Lacerda 1991a, b, Almeida and Mandarim-de-Lacerda 2002), aging process (Duffell et al. 2000, Aguila and Mandarim-de-Lacerda 2001, Pakkenberg et al. 2003), and pathological diagnosis (Elias et al. 1981, Collan 1985, Hamilton and Allen 1995, Collan 1997, Hof et al. 2003). Pathologists made an effort to establish new and accurate classifications to ambiguous pathologic diagnoses, mainly in carcinomas (any of the various types of malignant neoplasm derived from epithelial tissue in several sites), allowing a prognostic estimate (Hansen et al. 1998, Ladekarl 1998).

Stereological studies have scientific advantages over qualitative studies. Firstly, results are numerical (not subjective), then reproducible and easier to be verified at any time by different laboratories. Secondly, the comparison among different groups (ages, species, drug actions, manipulations, etc) are split out more easily; therefore, these methods are particularly useful to test those situations. Thirdly, fastidious work commonly associated with quantitative studies practically disappeared with the strict sampling strategy and the computer-aided way to perform modern stereology. Fourthly, well-established theoretical background makes the method largely acceptable. Fifthly, the need of short time training for young scientists. And finally, the need of low-cost equipment (but a high-standing equipment like a confocal laser scanning microscope is welcome) (Bolender 1981, 1982, Gundersen et al. 1999, Bjarkam et al. 2001, Kubinova and Janacek 2001, Kubinova et al. 2001, Pereira and Mandarim-de-Lacerda 2002, Charleston et al. 2003, Davey et al. 2003).

TABLE II

3D representation in 2D (see Figure 1).

3D	Units	2D	Units
volumes	mm ³	areas	mm ²
areas	mm ²	lines	mm ¹
lines	mm ¹	points	mm ⁰

METHODOLOGICAL PREMISES

Stereological approach has changed with time but it is still based on some methodological premises. The core of all stereological thought is the principle of the XIXth century French geologist Delesse, as we

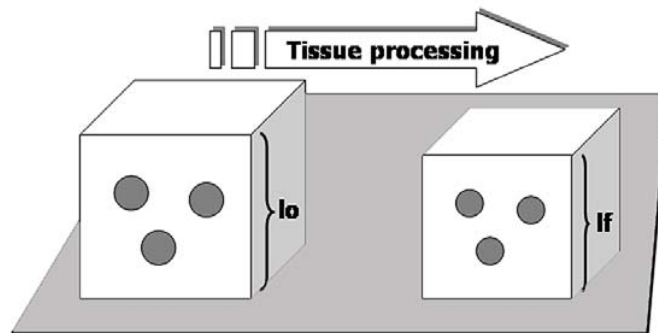


Fig. 3 – The shrunken tissue block (right side) occupies a smaller volume than the original fresh tissue volume (left side); l_f and l_o are some characteristic lengths in the shrunken and the original tissue block, respectively. The original volume (V_o) can be estimated from the shrunken volume (V_s): $V_o = V_s \cdot (l_o/l_f)^3$ where l_f and l_o are lengths in the shrunken and the original tissue block, respectively.

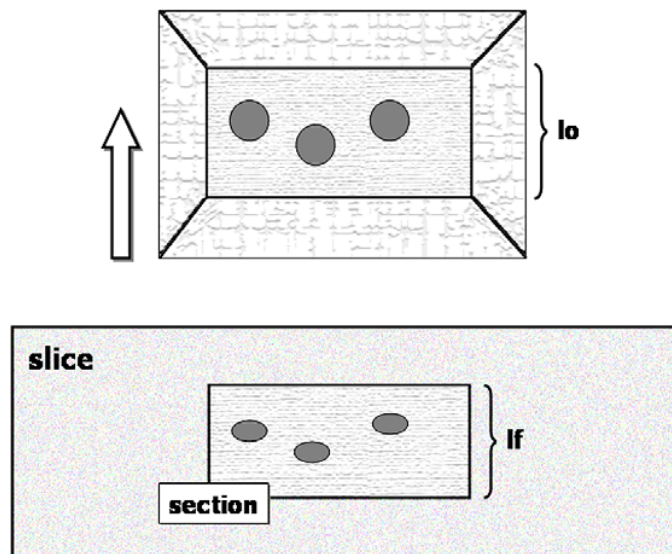


Fig. 4 – Effect of section compression. Length of the block face in the direction of the cutting stroke, l_o , and the same compressed length on the section, l_f . The section has been compressed by the compression factor ($fc=l_o/l_f$) (based on Weibel 1979).

will see in the sequence. However, some questions in stereology are solved by, or benefits from parallel principles.

A. THE VOLUME ESTIMATION

Frequently we need to estimate the volume of an entire organ or parts of an organ. This measurement is essential to estimate absolute stereological quantities, as we will see ahead. Two main methods are normally used to this estimate, the “water displacement” method and the procedure using the Cavalieri’s principle.

The volume determination by liquid displacement was solved by Archimedes (287-212 B.C.). King Hiero of Syracuse found the crown made by a goldsmith lighter than he estimated (by the gold quantity he gave the goldsmith to make the crown). Observing the water displacement when he went down into a public bathing pool, Archimedes realized he could solve the problem. At that moment he started running naked, crying Eureka! Eureka! which means, in ancient Greek, I found it! I found it! – This principle was adapted to the small organ’s volume estimate, the volume is determined according to the submersion method in which the isotonic saline displacement due to the organ volume is recorded by weighing (W) (Scherle 1970). As the specific gravity (σ) of isotonic saline is 1.0048 the volume (V) is obtained by: $V=W/\sigma$, or simple $V \approx W$ (Weibel 1979). Normally, weight is measured in grams that need transformation to a volume unit like cubic millimeters, for example (remember: 1g is equal to 10^3 mm^3).

The Italian mathematician Bonaventura Cavalieri (1598-1647) inspired by ancient Greeks demonstrated that the volume could be determined in a serially sectioned structure by the product of the slice areas and the slice thickness. From the viewpoint of applied stereology, Cavalieri showed that the volume of an arbitrary shaped object can be estimated in an unbiased manner from the product of the distance between planes (T) and the sum of areas on systematic-random sections through the ob-

ject (ΣA) (Mouton 2002). Figure 5 illustrates the method, if the areas are determined by point counting, the volume will be estimated without any measurement, just point counting. The method is useful in organs that absorb water rather than displace it or in organs like lung that do not displace water (Michel and Cruz-Orive 1988). Particularly, it is useful in microscopic structures, like the otic ganglion in rat (Costa et al. 1991) or in structures enmeshed into a tissue like the heart conduction system (Mandarim-de-Lacerda and Penteadó 1988).

B. DELESSE’S PRINCIPLE

“...D’après ce qui precede, on a ramené l’évaluation des volumes des différents minéraux à l’évaluation des surfaces qu’ils présentent dans les sections de la roche; mais il est facile de reconnaître qu’en supposant toujours la roche homogène, on ramènerait de même cette évaluation à celle des longueurs interceptées par les différents minéraux sur les lignes menées dans ces sections; quoique la détermination de ces longueurs puisse se faire assez simplement au moyen d’une ligne divisée sur laquelle on les lirait presque immédiatement” (Delesse 1847).

In a rock, composed of a number of minerals, the area occupied by any given mineral on a surface of a rock section is proportional to the volume of the mineral in the rock. The Delesse’s principle is based on homogenous structures (in stereological viewpoint in “isotropic and uniform random, IUR, sections”). Only in this case we can accept that:

$$\frac{P_P}{P_T} = \frac{L_L}{L_T} = \frac{A_A}{A_T} = \frac{V_V}{V_T}$$

that means, in IUR sections, the ratio between the partial points (P_P) counted on a section in relation to the total possible points or test-points (P_T) is equivalent to the ratio between lengths (partial, L_L , to total length, L_T), areas (partial, A_A , to total area, A_T) and volumes (partial, V_V , to total volume, V_T). Consequently, we can estimate the length fraction, the area fraction, or the volume fraction of a structure

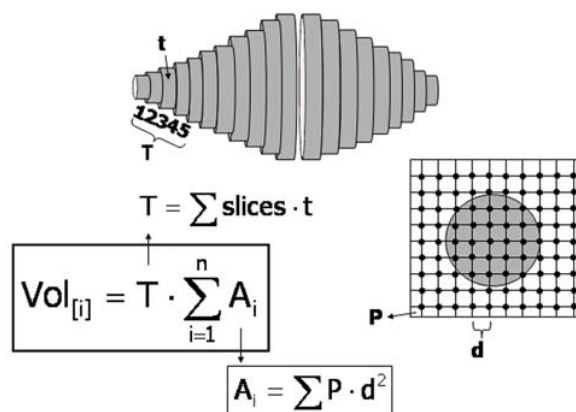


Fig. 5 – Cavalieri's principle and the organ volume estimation. The organ is serially cut with uniform thickness (t). For example, one every five sections ($T=5t$) is measured to determine area (for example by point counting method: in a square array test system the point area is calculated as the square of the distance between points, d).

just by point counting. The volume fraction or volume density (V_V) is a powerful robust stereological estimate, i.e. V_V could be estimated even when the IUR section cannot be proved at first.

C. HOLMES EFFECT

The ideal specimen is an infinitely thin section. The area occupied by any given component may be overestimated. To the eye placed above the section, the image of the component will appear to occupy a larger area on the surface of the section than it does in fact. In the case of particles with good contrast, it is usual to make some allowance for the Holmes effect if the mean diameter of the particle is less than 12 times the section thickness (Aherne and Dunnill 1982). Figure 6 shows spheres cut by a thin section and a thick section. Consequently, stereological estimate must take into account the Holmes effect. A mathematical correction of the Holmes effect can be done, although no correction is preferable by using thin sections. In practice, sections with no more than $3\mu\text{m}$ thick are useful to most of stereological procedures (an exception to the use of thin sections is the *disector's* method, where thick section over $20\mu\text{m}$ could be used).

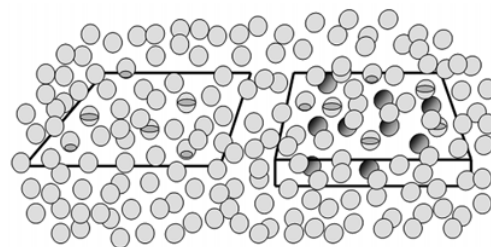


Fig. 6 – The Holmes effect not only interferes with size estimation, but also with the determination of volume ratio since particles overlap (right side). In sufficiently thin sections (left side) this problem doesn't exist.

D. THE BUFFON'S NEEDLE PROBLEM

Georges-Louis Leclerc "Count of Buffon" (born Sept. 7, 1707, Montbard, France died on April 16, 1788, in Paris). French naturalist, remembered for his comprehensive work on natural history, "Histoire Naturelle, Générale et Particulière" (begun in 1749). He was created a count in 1773.

"Je suppose que dans une chambre, dont le parquet est simplement divisé par des joints parallèles, on jette en l'air une baguette, et que l'un des

joueurs parie que la baguette ne croisera aucune des parallèles du parquet, et que l'autre au contraire parie que la baguette croisera quelques-unes de ces parallèles; on demande le fort de ces deux joueurs. On peu joueur ce jeu sur un damier avec une aiguille à coudre ou une épingle sans tête'' (Buffon 1777).

The needle problem was “what is the chance a needle tossed in the air will intersect lines on a parquet floor?” In the modern stereology the question should be “what is the probability that a randomly placed line will intersect a grid of parallel lines?” (Mouton 2002). Based on this, the border (b) and, consequently, the surface density (S_V) of a structure can be estimated (Figure 7):

$$b = \frac{\pi}{2} \cdot d \cdot I \quad S_V = \frac{2 \cdot I}{L_T}$$

where d is the distance between the lines of a test-system, I is the number of intersections of the structure boundary with the lines, and L_T is the total length of the lines. The S_V is a sensible (not robust) estimate; the IUR sections premise needs to be respected at first (Cruz-Orive and Weibel 1990).

E. PRODUCING IUR SECTIONS

An organ has homogeneous (isotropic or not orientated) structure when we are not able to decide the orientation section observing its histological appearance; otherwise, the organ has a heterogeneous (anisotropic or orientated) structure.

IUR sections are the morphological basis to use stereology. IUR sections always can be obtained to allow stereological studies. In organs with homogeneous structure (liver, salivary glands, etc) IUR sections are easy to obtain, cutting the tissue and staining the slices is enough. Organs with a heterogeneous structure need a special procedure to obtain IUR sections. To destruct the internal structural orientation of an organ two main methods have been proposed: the *orientator* (Mattfeldt et al. 1990) and the vertical sections (Baddeley et al. 1986).

The *orientator* is an evolution of the ortrips (Mattfeldt et al. 1985): it is theoretically shown that in anisotropic specimens the precision of L_v and S_v

estimation is considerably increased if IUR sections – oriented sets of three mutually perpendicular sections (orthogonal triplet probes = ortrips) are used. The *orientator* is a technique for the estimation of length and surface density and other stereological parameters using IUR sections. It is an unbiased, design-based approach to the quantitative study of anisotropic structures, such as muscle, myocardium, bone, and cartilage. No special technical equipment is necessary. *Orientator* can be generated without difficulty in large specimens like human skeletal muscle, myocardium, placenta, and gut tissue. Slight practical modifications extend the method applicability to smaller organs like rat hearts. At the ultrastructural level, a correction procedure for the loss of anisotropic mitochondrial membranes due to oblique orientation concerning the electron beam has been suggested. Other potential applications of the *orientator* in anisotropic structures include the estimation of individual particle surface area with isotropic *nucleators*, the determination of the connectivity of branching networks with isotropic *disectors*, and generation of isotropic sections for second-order stereology (three-dimensional pattern analysis) (Mattfeldt et al. 1990). Figure 8 shows the *orientator* made with rat heart. For example, in the kidney, the *orientator* design can be obtained initially by cutting the organ at random; the kidney is then placed on this cut and, again at random, the specimen is cut with a perpendicular section to the first plane. The specimen is again placed on the new cut surface and a new random orientation is defined by cutting the organ in a perpendicular section to the plane. The last cut is considered uniformly isotropic: it means that without reference to the position of the specimen in the first cut the last surface has an orientation that varies from all possible ones.

Vertical sections are plane sections longitudinal to a fixed (but arbitrary) axial direction. Examples are sections of a cylinder parallel to the central axis, and sections of a flat slab normal to the plane of the slab. Vertical sections of any object can be generated by placing the object on a table

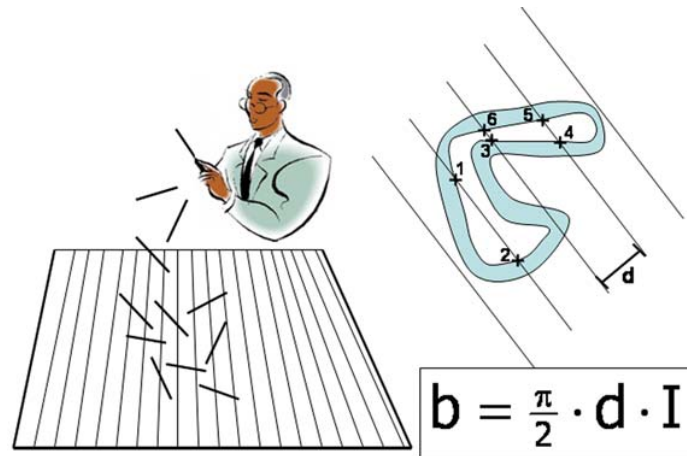


Fig. 7 – Buffon's needle problem and a practical determination of perimeter (b) based on the knowledge of the line distance (in a test-system) and the number of intersections of the structure boundary with the lines (I).

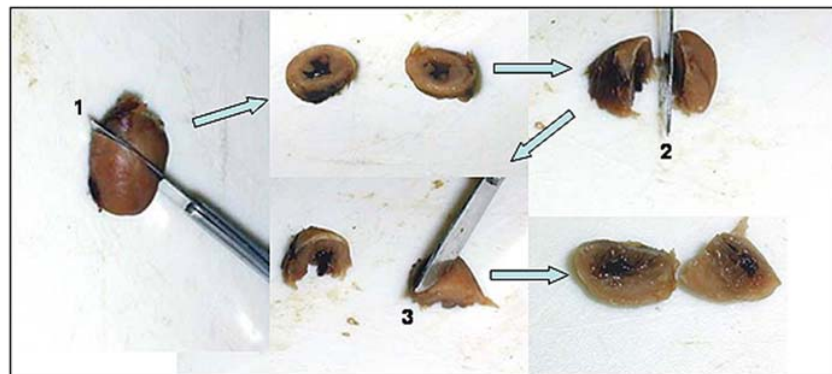


Fig. 8 – Generalization of the orientator method in rat heart preparation. First, the heart is cut at random (1) and after the two halves are put on this face and cut again at random (2), and again (3). This last face has no more information about the structural arrangement of the structure and can be considered isotropic and uniformly random.

and taking sections perpendicular to the plane of the table. Stereology's standard methods assume IUR sections, and they are not applicable to this kind of biased sampling. However, using specially designed test systems (cycloid arcs test-system), an unbiased estimate of surface area can be obtained (Mandarim-de-Lacerda and Pereira 2001). No assumptions are

necessary about the shape or orientation distribution of the structure. Vertical section stereology is valid on the same terms as standard stereological methods for isotropic random sections. The vertical axis direction is freely chosen, which makes the sampling procedure simple. Figure 9 shows vertical sections in an organ.

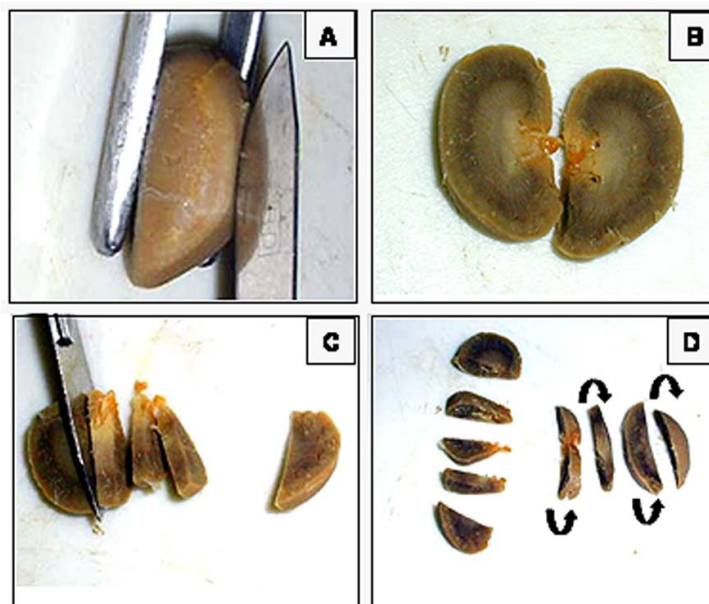


Fig. 9 – Generalization of the vertical section method in rat kidney. For the kidney, select an arbitrary horizontal reference plane (e.g. the laboratory bench). Once a reference plane has been selected for a particular object it is then considered as fixed. Generate an isotropic orientation in the horizontal plane (A and B). Section the kidney with uniform random position along this orientation (C and D). The object is given an isotropic rotation on the horizontal plane (D). A cycloid arcs test-system (Figure 11) must be used with these sections.

TEST-SYSTEMS AND DATA ACQUISITION

Stereological studies need test-lines, test-points and a known frame (test-area) to get information from the slices. All together, lines, points and frame compose a test-system. Usually, test-systems have a known line length (L_T), total points (P_T), and test-area (A_T). Stereology needs this information to estimate volume density ($V_V := P_P/P_T$), length density ($L_V := 2 \cdot Q_A$), and surface density ($S_V := 2 \cdot I/L_T$) (we use $:=$ because it is an estimate).

Any test-system needs to be superimposed to an image. It can be mounted into microscope's eyepiece, or drawn in acetate and put over the glossy prints (this is normally the case with electron micrographs), or over monitor screen in a video-microscopic system. Anyhow, we need to count

lines and points hitting tissue structures, or number of objects into the frame, to get enough information to the stereological formulas (Gundersen et al. 1988b, Cruz-Orive and Weibel 1990, Mandarim-de-Lacerda 1999).

Figure 10 shows a classic test-system called a "multipurpose test-system", or M42. A short line length, d , is used to calibration; A_T is $36.36d^2$, L_T is $21d$ and P_T is 42 (Weibel et al. 1966). Another test-system composed by cycloid arcs is particularly useful with vertical sections and stratified samples (skin, mucosa, cortex, etc) (Figure 11) (Gundersen et al. 1988b). If S_V do not need to be estimated – remember that S_V is not robust, need IUR sections and, therefore, a major effort (great cost) is normally necessary to estimate S_V – a test-system without lines could be used (like the example of

Figure 12), allowing easy and fast counts with no accuracy loss. Since the Danish stereologist Hans Gundersen demonstrated the overestimation caused the edge effect, two borders of a frame have been systematically considered “forbidden”, and all structures hit by these borders are not considered in the counts (Figure 13) (Gundersen 1977).

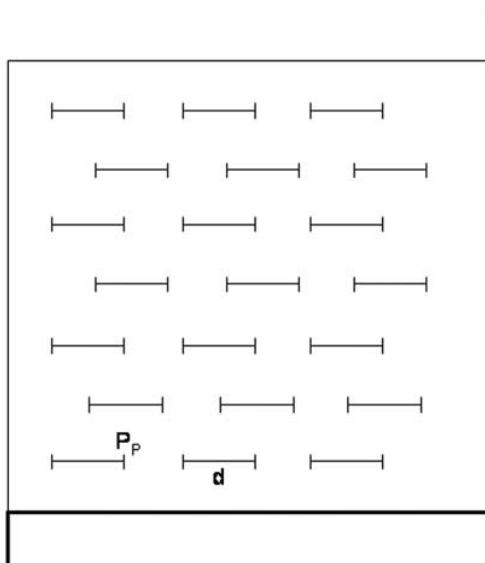


Fig. 10 – M42 test-system. This system has 21 short lines with known length (d) and two test-points in each extremity (P_p , 42 test-points in total). The test-area is $36.36d^2$. The thicker lines are “forbidden” (see explanation in Figure 13).

In Figure 14 example, a slice of the renal cortex observed under light microscopy is to be counted with the M42 test-system. With the picture magnification short line (d) corresponds to $25\mu\text{m}$ (consequently, $A_T=22,725\mu\text{m}^2$ and $L_T=525\mu\text{m}$). Five glomeruli can be counted into the frame not hitting the forbidden line or its extensions ($N=5$), seven points hit glomeruli ($P_p=7$), and six lines intersect Bowman’s capsule ($I=6$). In these conditions, $V_v=16.7\%$; Q_A (or N_A)= $(5/22,725)/\mu\text{m}^2$ or $220/\text{mm}^2$; $S_v=0.0229\mu\text{m}^2/\mu\text{m}^3$ or $23\text{mm}^2/\text{mm}^3$. A routine for that calculation can be simplified with a software facility. Of course, this is the result of only one microscopic field. The stereological work

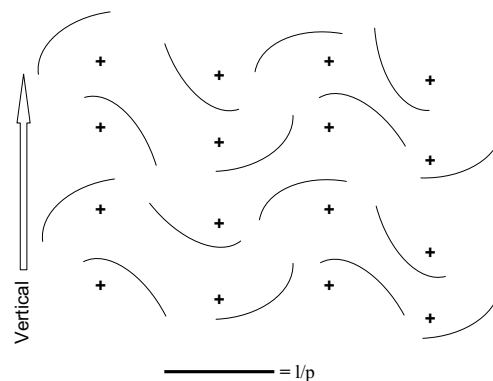


Fig. 11 – Cycloid arcs test-system. Crosses are test-points ($n=16$). The cycloid arc length is defined as the short line (l/p). The system must be aligned with the sections by the arrow (left side).

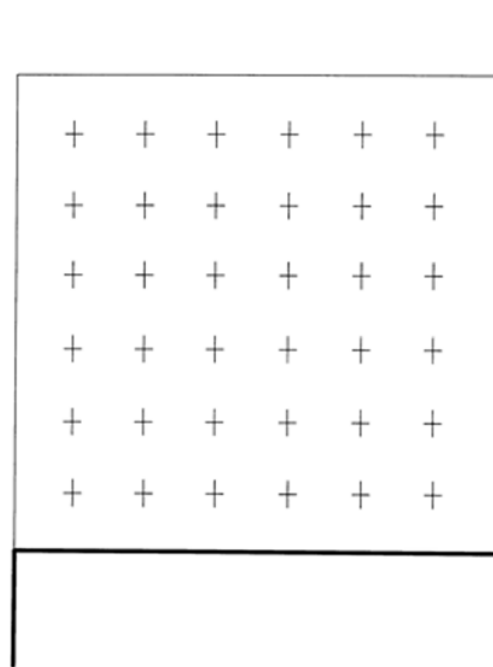


Fig. 12 – A test-system with 36 points. This system without lines allows fast counting and can be appropriated to majority of uses.

needs a sample of fields by individual, some individuals by group. The correct planning about how much count is pivotal to a good stereology must be made at first. In stereology, efficiency is measured by the

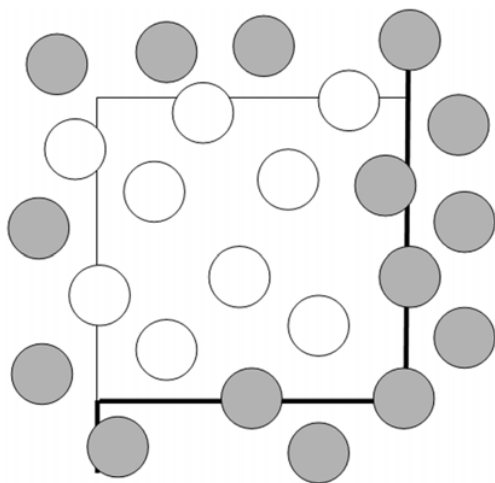


Fig. 13 – Test frame for profile counting: thicker line represents “forbidden line” (all structures hitting this line are not considered). In the schema only white circles are counted (based on Gundersen 1977).

effort to obtain results. A better efficiency is obtained counting less, therefore spending less money (with material, technical preparation, etc), but maintaining the accuracy (remember the comment of the Introduction “do more less well”) (Gundersen and Osterby 1981).

ESTIMATION OF OBJECTS QUANTITY

The objects quantity estimation is a crucial issue in stereology. This is partially answered with the estimate of the objects number into a frame (Q_A or N_A) (Mussel et al. 2003), but it is not enough to study three-dimensional structures. Instead, over the past years a great effort was made to found a reproducible method to estimate the numerical density (N_V) of objects, but, until 1984 all these methods had intrinsic bias (Weibel and Gomez 1962, Aherne 1967) – we recommend classic textbooks for a detailed discussion about these old methods (Weibel 1979, Aherne and Dunnill 1982, Elias and Hyde 1983). A truly deep change about the problem of the objects quantity estimation in three-dimensional space occurred with the work published by the nicknamed Sterio

and the idea of the “disector” method (note that the word “disector” has only one *s* according to its first description) (Sterio 1984).

Most authors consider the *disector* method unbiased (Bendtsen and Nyengaard 1989, Fiala and Harris 2001, Charleston et al. 2003), but not unanimously (Hedreen 1999, Baddeley 2001, von Bartheld 2002). When the *disector* method completed 10 years of use an interesting review demonstrates how the method extended in literature with great impact on the counting and sizing of biological particles (Mayhew and Gundersen 1996).

Figure 15 shows the basic principles of the *disector* method in which N_V is obtained in sets of two parallel sections with a known separation (thickness). To avoid overestimation of counts one plane (look up plane or look down plane) is considered forbidden and counts must be made only on one plane (because this count is named Q^-). For example, if the look down plane is considered forbidden no objects hit by this plane are counted, but hit by the look up plane. Counts are made into a frame of known area A_T (considering the forbidden line and its extensions like described before). So, a test-volume is constructed (A_T multiplied by thickness), count into this test-volume is considered unbiased (Gundersen et al. 1988a, Mandarim-de-Lacerda and Costa 1993, Mandarim-de-Lacerda et al. 1995, Burity et al. 1996, Aguila and Mandarim-de-Lacerda 1999, Mandarim-de-Lacerda and Pereira 2000, Pessanha and Mandarim-de-Lacerda 2000, Melo et al. 2002).

The optical *disector* consists of counts made in thick sections observed with a light microscope adapted with axis-z mobile stage (to exactly determine the distance between up and down planes of the *disector*, or thickness t). The physical *disector* consists of counts made on photomicrographs (Figure 16) (Pereira and Mandarim-de-Lacerda 2001a) or electron micrographs of up and down planes. The numerical density of objects (N_V) can be estimated as:

$$N_V [\text{object}] = \frac{Q^-}{A_T \cdot t} \quad \text{l/mm}^3$$

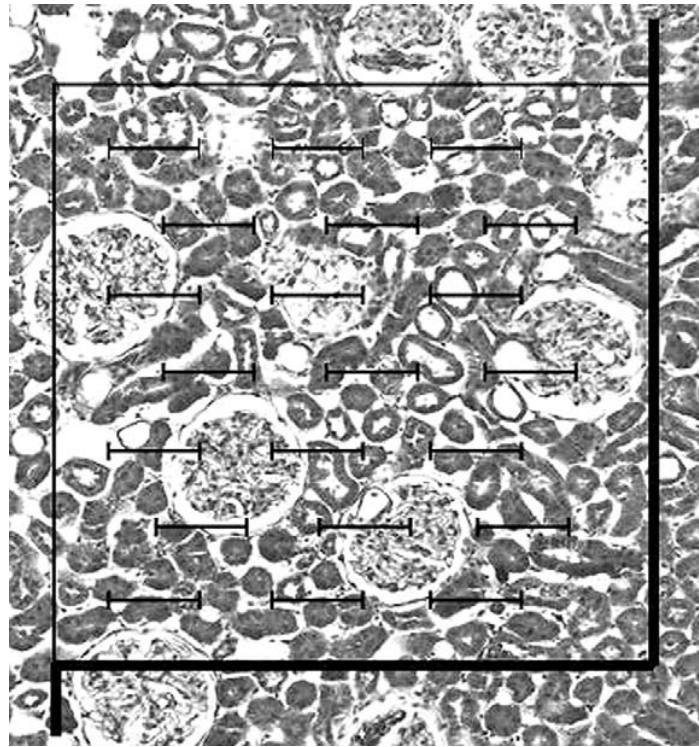


Fig. 14 – Photomicrograph of the renal cortex with the M42 test-system superimposed (see text).

The absolute number of objects (N) can be estimated if the organ (tissue) volume is known (V , Scherle's method of water displacement or Cavalieri's method already described): $N = N_V \cdot V$.

The *fractionator* is another unbiased method used to quantify the object number. It uses the manual technique of blood cells counting principle, blood is diluted many times and, at the end, blood cells are counted in this diluted sample. The counted number must be multiplied by the dilutions, allowing the number of cells estimate in the intact blood. With the *fractionator* technique the same process occurs. The organ is completely sliced, a known fraction of slices is taken (for example, *one every three* slices) and cut away in strips, a known fraction of strips (for example, *one every four* strips) is taken and cut away in fragments, a known fraction of the fragments (for example, *one every five* fragments) is embedded and serially sectioned. Finally,

a known fraction of the sections is analyzed (for example, *one every three* sections) and all objects are counted in these chosen section. This counted number ($N_{[\text{counted}]}$) must be multiplied by fractions to re-compose the absolute number of objects ($N_{[\text{objects}]}$) in the organ (Pakkenberg and Gundersen 1988, West et al. 1991, Nyengaard and Bendtsen 1992).

In the example above

$$N_{[\text{objects}]} = N_{[\text{counted}]} \cdot 3 \cdot 4 \cdot 5 \cdot 3.$$

LAST BUT NOT FINAL WORDS

This short review was addressed to scientists working in different fields of biology and medicine. The author did not consider it an appropriate space to a long discussion about stereology, but an informative text to motivate young scientists, aiming at a comfortable reading of modern texts. Some stereological techniques were not described here (volume-

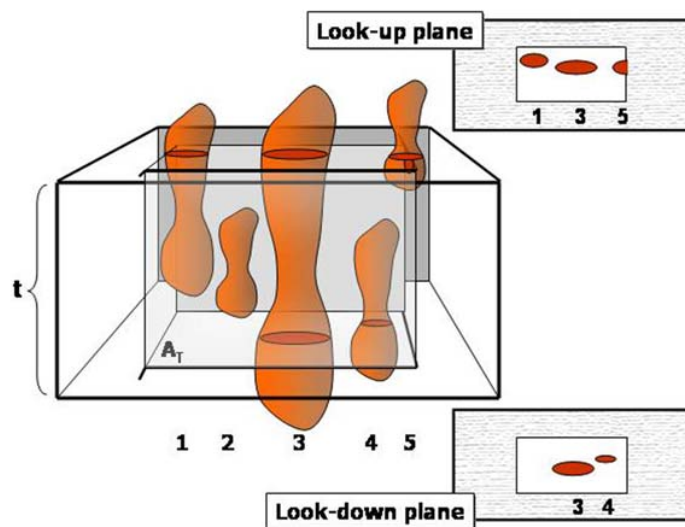


Fig. 15 – Schematic representation of the “disector” method. Disector is the union of a reference plane with an unbiased counting frame of area A_T and a look-up plane at distance t apart. Four particles are in relation to the disector’s volume (calculated as $A_T \times t$). In the disector’s volume we consider the forbidden line (relative to A_T , see Figure 13) and a forbidden plane. All particles hitting forbidden line or forbidden plane are not considered. In the example, we suggest the look-down plane as forbidden plane. In right side up and down we see the schema of the slices with the particles profiles. Up slice shows particles 1, 3 and 5. Down slice shows particles 3 and 4. In the up slice particle 5 hit forbidden line. Therefore, only particle 1 in up slice must be counted.

weighted nuclear volume, bone star volume, nucleator, etc) to follow this text characteristics, but it does not imply they are less important for the morphological quantification. For more details, readers are driven to complete and updated textbooks (Howard and Reed 1998, Russ and Dehoff 2000, Mouton 2002). Statistical analysis of stereological data is an important complement to the present text (Jensen 1998).

ACKNOWLEDGMENTS

The author wish to thank his colleagues of the Post-Graduate Program of Morphology, Institute of Biology, State University of Rio de Janeiro (UERJ), for their continuous encouragement and discussion about different situations of quantitative morphology, and also wish to thank graduate and undergrad-

uate students that often stimulate the author with their interesting (sometimes embarrassing) questions about stereology. Author’s laboratory is sponsored by grants from CNPq and FAPERJ.

RESUMO

Estudos estereológicos são cada vez mais frequentes na literatura, particularmente nos campos do desenvolvimento/evolução, patologia e neurociências. O desafio da estereologia é interpretar o arranjo estrutural tridimensional interno com base na análise de cortes da estrutura que mostram apenas uma informação bidimensional. São comentados nesta revisão, no contexto da estereologia, os métodos de avaliação de volume de Cavalieri e de Scherle, assim como o problema das agulhas de Buffon. Um conjunto de ações é necessário para quantificar estruturas morfológicas adequadamente (sem viés e de modo

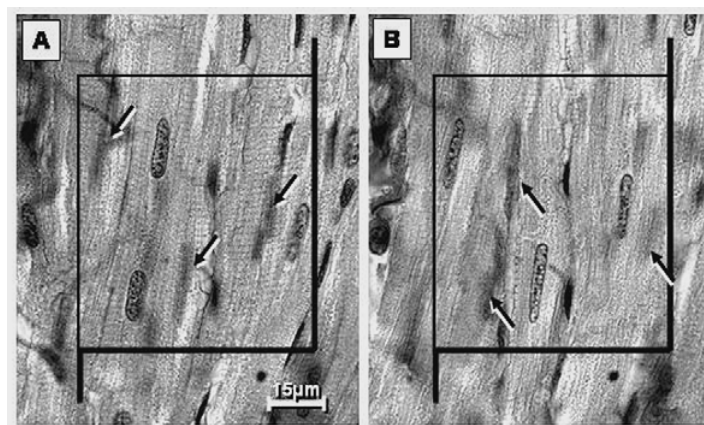


Fig. 16 – Example of a physical disector made with myocardium. The look-up plane is represented by A and the look-down plane is represented by B. Arrows show cardiomyocyte nuclei shadows in the opposite plane of the disector. If we consider the look-down plane forbidden three sharp nuclei are counted in A because these nuclei don't hit the look-down plane (based on Pereira and Mandarim-de-Lacerda 2001a).

reprodutível), i.e. amostragem correta, cortes aleatórios e uniformemente isotrópicos (princípio de Delesse), ferramentas estereológicas atualizadas (disector, fractionator, nucleator, etc). Usando corretamente a estereologia pode-se realizar estudos quantitativos com pouco esforço: eficiência em estereologia significa contar uma amostra de cortes mínima (pouco trabalho), gastando pouco (para preparar os cortes para análise), mas com boa acurácia. Neste texto é feita uma revisão das principais ferramentas estereológicas com a finalidade de fornecer uma base de informação para cientistas não especializados no método.

Palavras-chave: morfometria, estereologia, densidade de volume, densidade de superfície, densidade de comprimento, *disector*, *fractionator*.

REFERENCES

- ABERCROMBIE M. 1946. Estimation of nuclear population from microtomic sections. *Anat Rec* 94: 239-247.
- AGUILA MB AND MANDARIM-DE-LACERDA CA. 1999. Numerical density of cardiac myocytes in aged rats fed a cholesterol-rich diet and a canola oil diet (n-3 fatty acid rich). *Virchows Arch* 434: 451-453.
- AGUILA MB AND MANDARIM-DE-LACERDA CA. 2001. Blood pressure, ventricular volume and number of cardiomyocyte nuclei in rats fed for 12 months on diets differing in fat composition. *Mech Ageing Dev* 122: 77-88.
- AHERNE WA. 1967. Methods of counting discrete tissue components in microscopical sections. *J R Microsc Soc* 87: 493-501.
- AHERNE WA AND DUNNILL MS. 1982. *Morphometry*. London: Edward Arnold, 205 p.
- ALMEIDA JR AND MANDARIM-DE-LACERDA CA. 2002. Quantitative study of the comma-shaped body, S-shaped body and vascularized glomerulus in the second and third human gestational trimesters. *Early Hum Develop* 69: 1-13.
- ANDERSEN BB AND PAKKENBERG B. 2003. Stereological quantitation in cerebella from people with schizophrenia. *Br J Psychiatry* 182: 354-361.
- BADDELEY AJ. 2001. Is stereology 'unbiased'? *Trends Neurosci* 24: 375-376; author reply 378-380.
- BADDELEY AJ, GUNDERSEN HJ AND CRUZ-ORIVE LM. 1986. Estimation of surface area from vertical sections. *J Microsc* 142 (Pt 3): 259-276.
- BENDTSEN TF AND NYENGAARD JR. 1989. Unbiased estimation of particle number using sections – an historical perspective with special reference to the stereology of glomeruli. *J Microsc* 153 (Pt 1): 93-102.

- BJARKAM CR, PEDERSEN M AND SORENSEN JC. 2001. New strategies for embedding, orientation and sectioning of small brain specimens enable direct correlation to MR-images, brain atlases, or use of unbiased stereology. *J Neurosci Methods* 108: 153-159.
- BOLENDER RP. 1981. Stereology: applications to pharmacology. *Annu Rev Pharmacol Toxicol* 21: 549-573.
- BOLENDER RP. 1982. Stereology and its uses in cell biology. *Ann NY Acad Sci* 383: 1-16.
- BOLENDER RP. 1992. Biological stereology: history, present state, future directions. *Microsc Res Tech* 21: 255-261.
- BUFFON G-L. 1777. *Essai d'arithmétique morale. Supplément à l'histoire naturelle*. Paris: Imprimerie Royale, 321 p.
- BURITY CHF, MANDARIM-DE-LACERDA CA AND PISSINATTI A. 1996. Stereology of the myocardium in two species of *Callithrix* (Callitrichidae, primates). *Anat Anz* 178: 437-441.
- CHALKLEY HW. 1943. Methods for quantitative morphological analysis of tissue. *J Natl Cancer Inst* 4: 47-53.
- CHALKLEY HW, CORNFIELD J AND PARK HC. 1949. A method for estimating volume-surface ratios. *Science* 110: 295-301.
- CHARLESTON LB, THYER AC, KLEIN NA, SOULES MR AND CHARLESTON JS. 2003. An improved method for the production of slides from oversized samples of glycol methacrylate-embedded tissues: Application for optical disector based stereology. *J Histotechnol* 26: 49-52.
- COLLAN Y. 1985. Stereology and morphometry in histopathology. Principles of application. *Anal Quant Cytol Histol* 7: 237-241.
- COLLAN Y. 1997. Stereology in diagnostic pathology. *Pathologica* 89: 462-466.
- COSTA WS, MANDARIM-DE-LACERDA CA AND BAUER JA. 1991. Stereological analysis of the otic ganglia in adult rat: light microscopic study. *Anat Anz* 172: 203-207.
- CRUZ-ORIVE LM AND GUAL-ARNAU X. 2002. Precision of circular systematic sampling. *J Microsc* 207: 225-242.
- CRUZ-ORIVE LM AND WEIBEL ER. 1990. Recent stereological methods for cell biology: a brief survey. *Am J Physiol* 258: L148-156.
- DAVEY MG, HEDRICK HL, BOUCHARD S, ADZICK NS, FLAKE AW AND DOOLIN EJ. 2003. Computer-assisted stereology: Point fraction of lung parenchyma and alveolar surface density in fetal and newborn sheep. *Scanning* 25: 37-44.
- DELESSE MA. 1847. Procédé mécanique pour déterminer la composition des roches. *C R Acad Sci Paris* 25: 544-545.
- DUFFELL SJ, SOAMES AR AND GUNBY S. 2000. Morphometric analysis of the developing rat brain. *Toxicol Pathol* 28: 157-163.
- ELIAS H AND HYDE DM. 1983. *A guide to practical stereology*. New York: Karger, 305p.
- ELIAS H, HYDE DM, MULLENS RS AND LAMBERT FC. 1981. Colonic adenomas: stereology and growth mechanisms. *Dis Colon Rectum* 24: 331-342.
- FIALA JC AND HARRIS KM. 2001. Extending unbiased stereology of brain ultrastructure to three-dimensional volumes. *J Am Med Inform Assoc* 8: 1-16.
- GARDELLA D, HATTON WJ, RIND HB, GLENN GD AND VON BARTHELD CS. 2003. Differential tissue shrinkage and compression in the z-axis: implications for optical disector counting in vibratome-, plastic- and cryosections. *J Neurosci Methods* 124: 45-59.
- GUNDERSEN HJ. 1977. Notes on the estimation of the numerical density of arbitrary profiles: the edge effect. *J Microsc* 111: 219-227.
- GUNDERSEN HJ. 1988. The nucleator. *J Microsc* 151 (Pt 1): 3-21.
- GUNDERSEN HJ AND OSTERBY R. 1981. Optimizing sampling efficiency of stereological studies in biology: or 'do more less well!' *J Microsc* 121: 65-73.
- GUNDERSEN HJ, ANDERSEN BS AND FLOE H. 1983. Estimation of section thickness unbiased by cutting-deformation. *J Microsc* 131 (Pt 1): RP3-4.
- GUNDERSEN HJ, BAGGER P, BENDTSEN TF, EVANS SM, KORBO L, MARCUSSEN N, MOLLER A, NIELSEN K, NYENGAARD JR AND PAKKENBERG B. 1988a. The new stereological tools: disector, fractionator, nucleator and point sampled intercepts and their use in pathological research and diagnosis. *APMIS* 96: 857-881.

- GUNDERSEN HJ, BENDTSEN TF, KORBO L, MARCUSSEN N, MOLLER A, NIELSEN K, NYENGAARD JR, PAKKENBERG B, SORENSEN FB AND VESTERBY A. 1988b. Some new, simple and efficient stereological methods and their use in pathological research and diagnosis. *APMIS* 96: 379-394.
- GUNDERSEN HJ, JENSEN EB, KIEU K AND NIELSEN J. 1999. The efficiency of systematic sampling in stereology-reconsidered. *J Microsc* 193: 199-211.
- HAMILTON PW AND ALLEN DC. 1995. Quantitative clinical pathology. Oxford: Blackwell, 342 p.
- HANSEN S, GRABAU DA, ROSE C, BAK M AND SORENSEN FB. 1998. Angiogenesis in breast cancer: a comparative study of the observer variability of methods for determining microvessel density. *Lab Invest* 78: 1563-1573.
- HEDREEN JC. 1999. Unbiased stereology? *Trends Neurosci* 22: 346-347.
- HOF PR, BUSSIÈRE T, GOLD G, KOVARI E, GIANNAKOPOULOS P, BOURAS C, PERL DP AND MORRISON JH. 2003. Stereologic evidence for persistence of viable neurons in layer II of the entorhinal cortex and the CA1 field in Alzheimer disease. *J Neuropathol Exp Neurol* 62: 55-67.
- HOWARD CV AND REED MG. 1998. Unbiased stereology: three-dimensional measurement in microscopy. New York Berlin Heidelberg: Springer-Verlag, 246 p.
- JENSEN EBV. 1998. Local stereology. Singapore New Jersey London Hong Kong: World Scientific, 247p.
- KUBINOVA L AND JANACEK J. 2001. Confocal microscopy and stereology: estimating volume, number, surface area and length by virtual test probes applied to three-dimensional images. *Microsc Res Tech* 53: 425-435.
- KUBINOVA L, JANACEK J, RIBARIC S, CEBASEK V AND ERZEN I. 2001. Three-dimensional study of the capillary supply of skeletal muscle fibres using confocal microscopy. *J Muscle Res Cell Motil* 22: 217-227.
- LADEKARL M. 1998. Objective malignancy grading: a review emphasizing unbiased stereology applied to breast tumors. *APMIS Suppl* 79: 1-34.
- MANDARIM-DE-LACERDA CA. 1991a. Cardiac growth in staged human embryos-stages from 15 to 23, post-somitic period. *Anat Anz* 173: 60-64.
- MANDARIM-DE-LACERDA CA. 1991b. Growth allometry of the myocardium in human embryos (from stages 15 to 23). *Acta Anat (Basel)* 141: 251-256.
- MANDARIM-DE-LACERDA CA. 1999. What is the interest of normal and pathological morphological research to be quantitative? The example of the stereology. *Braz J Morphol Sci* 16: 131-139.
- MANDARIM-DE-LACERDA CA AND COSTA WS. 1993. An update of the stereology of the myocyte of the baboon's heart: analysis of the crista terminalis, interatrial and interventricular septa, and atrioventricular bundle. *Anat Anz* 175: 65-70.
- MANDARIM-DE-LACERDA CA AND PENTEADO CV. 1988. Topographical and morphometrical study of the atrioventricular junctional area of the cardiac conduction system in the *Macaca fascicularis* Raffles, 1821. *Anat Anz* 167: 57-61.
- MANDARIM-DE-LACERDA CA AND PEREIRA LM. 2000. Numerical density of cardiomyocytes in chronic nitric oxide synthesis inhibition. *Pathobiology* 68: 36-42.
- MANDARIM-DE-LACERDA CA AND PEREIRA LM. 2001. Renal cortical remodelling by NO-synthesis blockers in rats is prevented by angiotensin-converting enzyme inhibitor and calcium channel blocker. *J Cell Mol Med* 5: 276-283.
- MANDARIM-DE-LACERDA CA, LE FLOCH-PRIGENT P AND HUREAU J. 1985. Study of atrial conduction tissue in the 17 mm V-C human embryo. Morphological contribution to the pathogenesis of sinoauricular node dysfunction. *Arch Mal Coeur Vaiss* 78: 1504-1509.
- MANDARIM-DE-LACERDA CA, PASSOS MA AND SAMPAIO FJB. 1987. Quantitative study of the heart in 2 human twin embryos at 14 mm C-R (stage 18). *Acta Anat (Basel)* 130: 224-227.
- MANDARIM-DE-LACERDA CA, SANTOS MB AND PESANHA MG. 1995. Quantitative study of the myocardium in human embryos. *Anat Anz* 177: 179-184.
- MATTFELDT T, MOBIUS HJ AND MALL G. 1985. Orthogonal triplet probes: an efficient method for unbiased estimation of length and surface of objects with unknown orientation in space. *J Microsc* 139 (Pt 3): 279-289.
- MATTFELDT T, MALL G, GHAREHBAGHI H AND MOLLER P. 1990. Estimation of surface area and length with the orientator. *J Microsc* 159 (Pt 3): 301-317.
- MAYHEW TM. 1992. A review of recent advances in stereology for quantifying neural structure. *J Neurocytol* 21: 313-328.

- MAYHEW TM AND GUNDERSEN HJ. 1996. If you assume, you can make an ass out of u and me: a decade of the disector for stereological counting of particles in 3D space. *J Anat* 188 (Pt 1): 1-15.
- MELO SR, SOUZA RR AND MANDARIM-DE-LACERDA CA. 2002. Stereologic study of the sinoatrial node of rats – age related changes. *Biogerontology* 3: 383-390.
- MICHEL RP AND CRUZ-ORIVE LM. 1988. Application of the Cavalieri principle and vertical sections method to lung: estimation of volume and pleural surface area. *J Microsc* 150 (Pt 2): 117-136.
- MOUTON PR. 2002. Principles and practices of unbiased stereology. An introduction for bioscientist. Baltimore: John Hopkins University Press, 214 p.
- MOUTON PR, GOKHALE AM, WARD NL AND WEST MJ. 2002. Stereological length estimation using spherical probes. *J Microsc* 206: 54-64.
- MUSSEL RL, DE SA SILVA E, COSTA AM AND MANDARIM-DE-LACERDA CA. 2003. Mast cells in tissue response to dentistry materials: an adhesive resin, a calcium hydroxide and a glass ionomer cement. *J Cell Mol Med* 7: 171-178.
- NYENGAARD JR AND BENDTSEN TF. 1992. Glomerular number and size in relation to age, kidney weight, and body surface in normal man. *Anat Rec* 232: 194-201.
- PAKKENBERG B AND GUNDERSEN HJ. 1988. Total number of neurons and glial cells in human brain nuclei estimated by the disector and the fractionator. *J Microsc* 150 (Pt 1): 1-20.
- PAKKENBERG B, PELVIG D, MARNER L, BUNDGAARD MJ, GUNDERSEN HJ, NYENGAARD JR AND REGEUR L. 2003. Aging and the human neocortex. *Exp Gerontol* 38: 95-99.
- PEREIRA LM AND MANDARIM-DE-LACERDA CA. 2001a. The effect of enalapril and verapamil on the left ventricular hypertrophy and the left ventricular cardiomyocyte numerical density in rats submitted to nitric oxide inhibition. *Int J Exp Pathol* 82: 115-122.
- PEREIRA LM AND MANDARIM-DE-LACERDA CA. 2001b. Glomerular profile numerical density per area and mean glomerular volume in rats submitted to nitric oxide synthase blockade. *Histol Histopathol* 16: 15-20.
- PEREIRA LM AND MANDARIM-DE-LACERDA CA. 2002. Myocardial changes after spironolactone in spontaneous hypertensive rats. A laser scanning confocal microscopy study. *J Cell Mol Med* 6: 49-57.
- PESSANHA MG AND MANDARIM-DE-LACERDA CA. 2000. Influence of the chronic nitric oxide synthesis inhibition on cardiomyocytes number. *Virchows Arch* 437: 667-674.
- ROBERTS N, PUDDPHAT MJ AND MCNULTY V. 2000. The benefit of stereology for quantitative radiology. *Br J Radiol* 73: 679-697.
- RUSS JC AND DEHOFF RT. 2000. Practical stereology. 2nd ed. New York: Kluwer Academic/Plenum Publishers, 381 p.
- SCHERLE W. 1970. A simple method for volumetry of organs in quantitative stereology. *Mikroskopie* 26: 57-60.
- STERIO DC. 1984. The unbiased estimation of number and sizes of arbitrary particles using the disector. *J Microsc* 134 (Pt 2): 127-136.
- VON BARTHELD C. 2002. Counting particles in tissue sections: choices of methods and importance of calibration to minimize biases. *Histol Histopathol* 17: 639-648.
- WEIBEL ER. 1979. Stereological Methods. Practical methods for biological morphometry. London: Academic Press, 415 p.
- WEIBEL ER. 1989. Measuring through the microscope: development and evolution of stereological methods. *J Microsc* 155 (Pt 3): 393-403.
- WEIBEL ER AND GOMEZ DM. 1962. A principle for counting tissue structures on random sections. *J Appl Physiol* 17: 343-348.
- WEIBEL ER, KISTLER GS AND SCHERLE WF. 1966. Practical stereological methods for morphometric cytology. *J Cell Biol* 30: 23-38.
- WEST MJ, SLOMIANKA L AND GUNDERSEN HJ. 1991. Unbiased stereological estimation of the total number of neurons in the subdivisions of the rat hippocampus using the optical fractionator. *Anat Rec* 231: 482-497.