



Revista Mexicana de Economía y
Finanzas. Nueva Época / Mexican
Journal of Economics and Finance

ISSN: 1665-5346

remef@imef.org.mx

Instituto Mexicano de Ejecutivos de
Finanzas A.C.

Dávila-Aragón, Griselda; Rivas-Aceves, Salvador; Ortiz-Arango, Francisco
Operational Risk Measured by Bayesian Networks with a Poisson-Gamma Joint
Distribution in a Financial Firm

Revista Mexicana de Economía y Finanzas. Nueva Época / Mexican Journal of
Economics and Finance, vol. 12, núm. 4, octubre-diciembre, 2017, pp. 351-363

Instituto Mexicano de Ejecutivos de Finanzas A.C.

Distrito Federal, México

Available in: <http://www.redalyc.org/articulo.oa?id=423753324001>

- How to cite
- Complete issue
- More information about this article
- Journal's homepage in redalyc.org

redalyc.org

Scientific Information System

Network of Scientific Journals from Latin America, the Caribbean, Spain and Portugal

Non-profit academic project, developed under the open access initiative

Operational Risk Measured by Bayesian Networks with a Poisson-Gamma Joint Distribution in a Financial Firm

Griselda Dávila-Aragón*

Universidad Panamericana, Escuela de Ciencias Económicas y Empresariales
Salvador Rivas-Aceves

Universidad Panamericana, Escuela de Gobierno y Economía

Francisco Ortiz-Arango

Universidad Panamericana, Escuela de Ciencias Económicas y Empresariales

(Received September 06, 2016, accepted February 08, 2017.)

Abstract

Main objective is to quantifying capital requirements of Operational Risk based on Bayesian inference by using an operational risk advanced measurement model, particularly when historical information is not available for a typical Mexican financial institution. The model employs a conjugated Poisson-Gamma distribution and feeds from experts interviews information so parameters can be measured. Monte Carlo simulations based on an interval for experts expected value of a loss event were generated from which following results were collected: 1) operational risk value can be gotten with insufficient information at a 95% of confidence, 2) expected losses tend to increase when experts expected events increase as well, 3) a positive correlation between operational risk and experts expected events exist, 4) frequency and severity of losses are smaller at the beginning and higher as operational risk value is been approached, then both decrease again. Described results depend highly on assumptions model and experts opinion and information available. Methodology proposed stands for an operational risk advanced measurement, so a specific strategy can be formulated for the firm to avoid losses and therefore operational risk.

JEL Classification: C11, C16, G19.

Key Words: Bayesian Analysis, Gamma and Poisson Distributions, Operational Risk.

Riesgo operacional medido por Redes Bayesianas con una distribución conjunta Poisson-Gamma en una empresa financiera

Resumen

El objetivo es cuantificar requerimientos de capital y riesgo operacional mediante inferencia bayesiana, mediante un modelo de distribución conjunta Poisson-Gamma alimentado por información de expertos para una institución financiera mexicana. Simulaciones Monte Carlo basadas en intervalos del valor esperado del evento de pérdida muestran que: 1) El valor del riesgo operacional se puede obtener con información insuficiente con 95% de confianza, 2) las pérdidas esperadas tienden a aumentar cuando los sucesos que esperan los expertos también se incrementan, 3) hay una correlación positiva entre el riesgo operativo y los eventos esperados por los expertos, 4) la frecuencia y severidad de las pérdidas son más pequeñas al principio y luego crecen conforme el valor en riesgo operacional se acerca al óptimo, después ambos disminuyen nuevamente. Los resultados descritos dependen de los supuestos del modelo así

* Calle Donatello No 59. Col. Insurgentes Mixcoac. Del. Benito Juárez C.P. 03920, Ciudad de México. E-mail: gdavila@up.edu.mx

como de la opinión de los expertos y la información disponible al interior de la firma. La metodología propuesta proporciona una medición avanzada del riesgo operativo, por lo que se puede formular una estrategia específica para que una empresa financiera evite pérdidas y asuma riesgo operacional.

Palabras clave: Análisis bayesiano, Distribuciones Gamma y Poisson, Riesgo operacional.

Clasificación JEL: C11, C16, G19.

1. Introduction

In order to fulfill capital requirements needed in Advanced Measure Models defined by Basilea II agreements, financial institutions must use internal data, relevant external information, scenario analysis and factors so that firms business environment as well as its internal control system improves. Up to now internal historic data of operational risk losses have been insufficient to predict future, furthermore, there is not sufficient information to estimate frequency and severity of losses in a safe way (Chen, *et al.*, 2013). On the other hand, external data are difficult to obtain due to operational treatment diversity among financial institutions (Zhou *et al.*, 2014). Examining causes and effects of losses is relevant when an Operational Risk Analysis is executed.

Scenario analysis can be subjective by itself; however combined with historical data of operational risk losses it turns into a powerful tool for estimating this type of risk. There are crucial aspects regarding operational risk management that can be explored by cause-effect models (Chonawee, *et al.*, 2006). Bayesian inference has proved to be a worthy technique for combining incomplete data with expert opinions.

Operational Risk (OR) is defined as potential loss because of fails or deficiencies in internal controls, errors in processing and loading operations or information transmission, as well as by adverse administrative and judicial resolutions, frauds, robbery, technological and legal risk (CUB, 2005). This definition includes operational and legal risk but excludes reputational risk. OR is classified as a quantifiable and non-discretionary risk because it cannot be generated due to taking risk positions.

OR is the eldest of all risks a financial institution might confront, in general is inherent to all activities where people, process and technological platforms intervene in, and so is not exclusive of financial activities.

Basilea II document (BIS, 2005) denotes that in order to qualify for operational risk of capital measurement by an Advanced Measure Models (AMM) institutions have to prove internal modeling precision, for each entry of the risk matrix created on eight business lines and seven relevant risks types. If institutions want to achieve regulatory requirements, modeling must embrace:

- Internal data
- External data
- Scenario analysis
- Business environment and internal control systems factors.

There are several more aspects while modeling operational risk according to Chavez *et al.* (2006) and Cruz (2004), if a Loss Distribution Approach (LDA) model is used, then financial institutions must quantify frequency distributions

and severity of operational losses in each entry of the risk matrix within a year time interval. Regarding OR, there are some applied approaches that estimate OpVar using several different methods, see Venegas-Martínez (2006), Martínez-Sánchez and Venegas-Martínez (2013a, 2013b, 2013c).

Main objective of the present research is to quantifying capital requirements of OR based on Bayesian inference by using an operational risk advanced measurement model, particularly when historical information is not available for a typical Mexican financial institution. The model employs a conjugated Poisson-Gamma distribution and feeds from experts interviews information so parameters can be measured. It is expected a direct and positive relationship between unexpected events and economic losses.

This document is organized as follows: an annual loss model thru business line and event type for estimating operational risk is presented in section 2, Bayesian inference theory is explored in section 3, a Bayesian analysis with a conjugated Poisson-Gamma distribution for estimating frequency and severity in a financial firm is performed in section 4, operational risk capital is estimated by using the parameters obtained from Bayesian analysis in section 5, main conclusions are characterized in section 6.

2. Annual Loss Model

A model with a single risk entry (business line/risk type) for annual losses is a process compound by:

$$M = \sum_{i=1}^n P_i \quad (1)$$

where n is the number of annual events modeled as a random variable with a discrete Poisson distribution and $P_i = 1, 2, \dots, n$ are the severity of the events modeled as an independent random variable of a continuous distribution. Frequencies n and severities P_i are assumed to be independent conditions of parameters distribution. Estimation of +annual loss distribution modeling frequency and severity is a typical technique (Klugman, *et al.*, 2012).

Frequency and severity estimation is a challenge specially because OR main characteristics when low frequency and high impact events occur, more so if insufficiency or scarcity of historical data exists. Among institutions external information sources are hard to find and even harder to apply because of the operations volume and the individual operational characteristics of them. Therefore, is complex to estimate probability distributions using only internal and external data, in fact information available presents limited capacity of predicting the future due to uncertainty environments, if information exists.

Hence, is very important to incorporate scenario analysis in the model since financial institutions use it to identify risks, so internal and external expertise of events can be found, current controls as well as those to be implemented in the future can be identified, etc. Moreover, is possible to recognize weakness, strengths and other factors acquired through an approximated quantitative evaluation of frequency and severity distributions based on experts knowledge; subsequently this type of analysis must be combined with LDA models.

Bayesian inference is a technique that integrates experts knowledge and data analysis (Bühlmann and Gisler, 2005). This method creates structural

models where experts knowledge is incorporated by specifying a priori distributions of models parameters, which are updated as information becomes available. At any time an expert can evaluate the a priori distribution based on new information and to include it into model. In the following section, Bayesian inference technique is described in the context of OR and is implemented in the quantification of OR for a financial institution. For the purpose of the present research, an expert is defined as an extremely experienced official employee with knowledge in operation and vulnerabilities of financial institutions.

3. Bayesian Inference

Bayesian approach is based on the subjective interpretation of probability, as a degree of believes respect uncertainty, see Venegas-Martínez (2008, Chapter 73). Bayesian inference considers an unknown parameter as a characteristic where a degree of believes can be expressed from and also be modified because sample information. A parameter is a random variable with an a priori distribution based on a probability assigned before sample evidence, when evidence is gotten the a priori distribution is adapted so a posteriori distributions emerges and inference respect the parameter can be formulated.

If a random vector of observations $P = (P_1, P_2, \dots, P_n)$ with a density of $h(P | \theta)$ for a vector of parameters $\theta = (\theta_1, \theta_2, \dots, \theta_k)$ is considered, where observations and parameters are always weighted as random ones, then Bayes theorem can be expressed as:

$$h(P, \theta) = h(P|\theta) \pi(\theta) = \hat{\pi}(\theta|P) h(P), \quad (2)$$

where $\pi(\theta)$ is the parameters density also known as a priori distribution, $\hat{\pi}(\theta|P)$ is the parameters density given by observed data P , also known as a posteriori distribution, $h(P, \theta)$ is the jointly density of observed data and parameters, $h(P | \theta)$ is the density of observations given by parameters and $h(P)$ is the marginal density of P . If $\pi(\theta)$ has a continuous distribution, then marginal density can be written as:

$$h(P) = \int h(P|\theta) \pi(\theta) d\alpha. \quad (3)$$

For the case of discrete distribution,

$$h(P) = \sum h(P|\theta) \pi(\theta). \quad (4)$$

For simplicity in notation $\pi(\theta)$ will be considered only in a continuous way. The objective is to estimate predictive distributions of frequency and severity for each observation P_{n+1} given the available information $P = (P_1, P_2, \dots, P_n)$. If parameters θ, P_{n+1} and P are pairwise and mutually independent, then conditional density given the vector of observations is:

$$f(P_{n+1}|P) = \int f(P_{n+1}|\theta) \hat{\pi}(\theta|P) d\theta. \quad (5)$$

By assuming that P_1, P_2, \dots, P_n and P_{n+1} are identically and independently distributed given θ , then using equation (2) the following a posteriori distribution is gotten:

$$\hat{\pi}(\theta|P) = \frac{h(P|\theta)\pi(\theta)}{h(P)}. \quad (6)$$

where $h(P|\theta)$ is the probability function of observations, $h(P)$ is a normalization constant from which a posteriori distribution function can be seen as an output of “previous knowledge” because observations of probability function. Since scarcity of data is a relevant scenario for studding OR it is proposed that:

- A priori distribution $\pi(\theta)$ must be estimated by experts knowledge.
- A priori distribution must be weighted among observed data by using equation (6) so a posteriori distribution $\hat{\pi}(\theta|P)$ can be obtained.
- Equation (5) is going to be used to calculate a predictive distribution of P_{n+1} given observations P .

Bayesian estimations approach leads to optimum estimations that minimized the quadratic error of prediction (Bühlmann and Gisler, 2005).

3.1 A Priori Distribution

If observations P_1, P_2, \dots, P_n are conditional given θ and also independent and identically distributed with density $f(P_i|\theta)$, then probability function can be written as:

$$h(P|\theta) = \prod_{i=1}^n f(P_i|\theta). \quad (7)$$

A posteriori distribution calculated after k number of observations will be $\hat{\pi}_k(\theta|P_1, P_2, \dots, P_k)$, by using equation (6) it can be observed that:

$$\hat{\pi}_k(\theta|P_1, P_2, \dots, P_k) \sim \pi(\theta) \prod_{i=1}^k f(P_i|\theta) \sim \hat{\pi}_{k-1}(\theta|P_1, P_2, \dots, P_{k-1}) f(P_k|\theta). \quad (8)$$

From equation (8) can be deduced that the updated process used to calculate a posteriori distributions from a priori distributions are produced thru iterative mode. There are only needed $k-1$ and k observations in order to determine a posteriori distribution after k observations. Therefore historical losses data are not required so is easier to modeling events, which allows experts to adjust a priori distributions at any time.

Formally, an a posteriori distribution calculated after $k-1$ observations can be considered as a priori distribution for the k observation. In practice, experts must set an a priori distribution $\pi(\alpha)$ and then a posteriori distribution has to be calculated by using equation (6) based on updated data, the a posteriori distribution function can be adjusted and used as a priori distribution for subsequent data.

4. Bayesian Analysis

Conjugated distributions are useful when Bayesian inference takes place. If F denotes a variety of density functions $f(P|\theta)$, indexed by θ , and one kind U of an a priori set of densities $\pi(\theta)$ exists, then $\pi(\theta)$ is a conjugated family for F if the a posteriori density is $f(P) = \int f(P|\theta)\pi(\theta)d\theta$, and is part of the

kind $U \forall f \in F$ and also $\pi \in U$. If a complete family U contains all distribution functions then is a conjugated family of F as well, nonetheless it is important that U be as small as possible meanwhile keeps a realistic distribution.

Conjugated pairs of functions $F - U$ more engaged for modeling frequency and severity in an OR analyses are: Poisson-Gamma, LogNormal-Normal and Pareto-Gamma (Anghelache, Olteanu, 2011). In all these cases a priori and a posteriori distributions are the same kind, hence a posterior distribution parameters are easy to calculate by using a priori distribution parameters and observations. In this analysis a Poisson distribution is employed for modeling frequency when unexpected events could generate an extremely economic lost, that is severity, which is modeled by a Gamma distribution. Therefore the use of a conjugated Poisson-Gamma distribution is in order to estimate OR.

Poisson distribution is one of the most used function distributions in OR modeling of losses frequency where occurrence frequency is not constant over time. Consider $N = (N_1, N_2, \dots, N_n)$ number of observations for a independent random variable with a Poisson distribution (λ) and conditional density that stands for the number of OR events observed within the financial institution, with a log likelihood given by:

$$f(N|\lambda) = e^{-\lambda} \frac{\lambda^N}{N!}, \lambda \geq 0 \quad (9)$$

and the a priori distribution for λ is a Gamma distribution (α, β) with a density function given by:

$$\pi(\lambda|\alpha, \beta) = \frac{\left(\frac{\lambda}{\beta}\right)^{\alpha-1}}{\Gamma(\alpha)\beta^\alpha} e^{-\frac{\lambda}{\beta}}, \quad \lambda > 0, \quad \alpha > 0, \quad \beta > 0. \quad (10)$$

If λ and N_1, N_2, \dots, N_n are independently as well as known, then the probability function is:

$$h(N|\lambda) = \prod_{i=1}^n e^{-\lambda} \frac{\lambda^{N_i}}{N_i!}. \quad (11)$$

By using equation (6), the a posteriori distribution is:

$$\hat{\pi}(\lambda|N) \sim \left(\prod_{i=1}^n e^{-\lambda} \frac{\lambda^{N_i}}{N_i!} \right) \left(\frac{\left(\frac{\lambda}{\beta}\right)^{\alpha-1}}{\Gamma(\alpha)\beta^\alpha} e^{-\frac{\lambda}{\beta}} \right) \sim e^{-\lambda\left(\frac{n\beta+1}{\beta}\right)} \lambda^{\alpha + \sum_{i=1}^n N_i - 1} \quad (12)$$

Consider now,

$$\begin{aligned} \hat{\alpha} &= \alpha + \sum_{i=1}^n N_i, \\ \hat{\beta} &= \frac{\beta}{n\beta + 1} \end{aligned} \quad (13)$$

The a posteriori distribution function is a Gamma $(\hat{\alpha}, \hat{\beta})$ distribution as the same as the a priori distribution but with parameters $(\hat{\alpha}, \hat{\beta})$. The expected number of events, given by observed data, $E(N_{n+1}|N)$ will be the a posteriori distribution measure as,

$$\begin{aligned} E(N_{n+1}|N) &= E(\lambda|N) = \hat{\alpha}\hat{\beta} = \left(\alpha + \sum_{i=1}^n N_i\right) \left(\frac{\beta}{n\beta + 1}\right) \\ &= \frac{\beta\alpha}{n\beta + 1} + \frac{\beta \sum_{i=1}^n N_i}{n\beta + 1} = \frac{n\beta\bar{N}}{n\beta + 1} + \frac{\beta\alpha}{n\beta + 1} \\ &= w\bar{N} + (1 - w)\theta \end{aligned} \quad (14)$$

The more the number of observations n is, the higher the value of w will be giving a higher weigh to observations and a lower weigh to experts opinion; the less the number of observations, w decreases and the experts opinion has a higher weigh. In order to incorporate updated data, the same process must be carried out in a recursive condition. Considering observed events N_1, N_2, \dots, N_k and assuming an a priori probability distribution $\pi(\lambda|\alpha, \beta)$, the Gamma (α, β) function is initiated and the a posteriori distribution function $\hat{\pi}(\lambda|N_1, N_2, \dots, N_k)$ after the k observation is the Gamma distribution $(\hat{\alpha}_k, \hat{\beta}_k)$ with:

$$\begin{aligned} \hat{\alpha} &= \alpha + \sum_{i=1}^k N_i, \\ \hat{\beta} &= \frac{\beta}{k\beta + 1}. \end{aligned} \quad (15)$$

where,

$$\begin{aligned} \hat{\alpha}_k &= \alpha + \sum_{i=1}^{k-1} N_i + N_k = \hat{\alpha}_{k-1} + N_k, \\ \hat{\beta}_k &= \frac{\hat{\beta}_{k-1}}{\hat{\beta}_{k-1} + 1}. \end{aligned} \quad (16)$$

Thus allows a posteriori distribution parameters to be based on recently observations and be calculated by updated data as becomes available. Experts can estimate the number of events, λ , but will not have absolute certainty of their estimation. The best approximation will be $E[E(N|\lambda)] = E(\lambda)$. If the expert specifies $E(\lambda)$ and has the certainty for a true value of λ to be within the interval (a, b) , with probability $P[a \leq \lambda \leq b] = p$, then parameters α and β can be estimated numerically.

$$E(\lambda) = \alpha\beta, \quad (17)$$

$$P[a \leq \lambda \leq b] = p = \int_a^b \pi(\lambda|\alpha, \beta) d\lambda = F_{\alpha, \beta}(b) - F_{\alpha, \beta}(a). \quad (18)$$

The accumulative Gamma α, β distribution function is:

$$F_{\alpha, \beta}(z) = \int_0^z \frac{(x)^{\alpha-1}}{\Gamma(\alpha) \beta^\alpha} e^{-\frac{x}{\beta}} dx. \quad (19)$$

So α and β are easily estimated. Now let's consider the information from a financial institution where experts deliberate that $E(\lambda) = 1.2$ and $P[0.8 \leq \lambda \leq 1.5] = 0.70$, so the a priori distribution will be a Gamma ($\alpha \approx 11.8273, \beta \approx 0.1015$).¹ If we assume that the financial institution will face 2 losses within a year once the a priori distribution has been estimated, then by using equation (16) the a posteriori distribution parameters are:

$$\hat{\alpha}_1 = \hat{\alpha}_0 + N_1 = 11.8273 + 2 = 13.8273, \quad (20)$$

$$\hat{\beta}_1 = \frac{\hat{\beta}_0}{\hat{\beta}_0 + 1} = \frac{0.1015}{0.1015 + 1} = 0.0921, \quad (21)$$

$$\hat{\lambda}_1 = \hat{\alpha}_1 \hat{\beta}_1 = (13.8273)(0.0921) = 1.2737. \quad (22)$$

If in the following year a loss is observed, then the a posteriori distribution parameters will be:

$$\hat{\alpha}_2 = \hat{\alpha}_1 + N_2 = 13.8273 + 1 = 14.8273, \quad (23)$$

$$\hat{\beta}_2 = \frac{\hat{\beta}_1}{\hat{\beta}_1 + 1} = \frac{0.0921}{0.0921 + 1} = 0.0843, \quad (24)$$

and

$$\hat{\lambda}_2 = \hat{\alpha}_2 \hat{\beta}_2 = (14.8273)(0.0843) = 1.2506. \quad (25)$$

With further observations $\hat{\lambda}$ value will be updated as equation (16) shows. Therefore, observed data will update the distributions for events with an initial condition based on an experts opinion.

¹ Such values were calculated in Microsoft Excel from a Solver Model.

5. Capital Risk Measurement

The financial institution has no constrain regarding any regulations to specify the confidence percentage that loss distribution must be estimated at; since the Comisión Nacional Bancaria y de Valores of Mexico does not stipulate a specific value on its regulations, the financial institution decided it should be 95%. Assuming frequency has a distribution $P(.|\lambda)$ and severity is measured by $f(.|\alpha)$, given λ and α , also a posteriori distribution function $\hat{\pi}(\lambda|N)$ and $\hat{\pi}(\alpha|X)$ where are λ and α estimated thru distribution functions defined by experts, the loss distribution can be calculated using Monte Carlo method as follows:

1. λ and α need to be simulated from $\hat{\pi}(\lambda|N)$ and $\hat{\pi}(\alpha|X)$ distributions.
2. To simulate N number of events for a frequency distribution, given λ .
3. To simulate severities X_n where $n = 1, 2 \dots N$ for severity distribution $f(.|\alpha)$, given α . It is important to keep in mind that severities are modeled as independent and identically distributed.

4. Expected loss is $Z = \sum_{i=1}^N X_n$

5. Finally is necessary to repeat k times steps 1 to 4 for constructing a loss sample $Z(K)$ with $k = 1, 2 \dots N$. Obtained values are organized in a descendent way and observed at the 95% of the series.

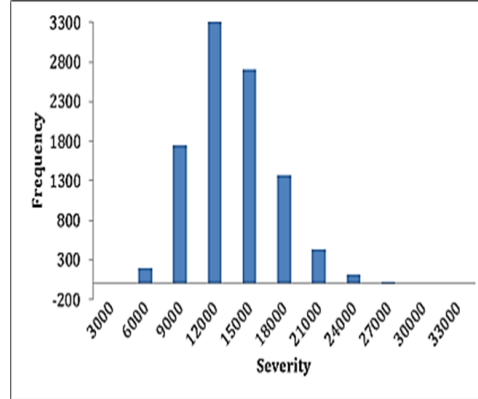
Since there is scarcity of data for calculating OR capital, Bayesian net has to be updated as soon as new information comes up form risk events. The expected number of risk events (N) for the firm is 1.20 and expected loss severity (X) is \$2,300.00 pesos. Under independency,

$$E(loss) = E(N) * E(X) = 2,760. \quad (26)$$

In order to calculate a loss distribution by Monte Carlo method, Poisson frequency distribution is assumed with $\lambda=1.20$ and Gamma distribution with $(\alpha \approx 11.8273, \beta \approx 0.1015)$, and then:

1. Experts assume parameters of a posteriori distribution.
2. 10,000 events N are simulated based on $P(N|\lambda = 1.20)$.
3. 10,000 random numbers are simulated based on $(X|\alpha \approx 11.8273, \beta \approx 0.1015)$.
4. Expected loss is obtained from $E(loss) = E(N) * E(X)$.
5. The 10,000 simulations are organized in a descendent way and the value from 95% of the series is found, hence OpVar is \$18,297.00 pesos.

Graphic 1. Losses values from Monte Carlo Simulation



Source: Own elaboration

The OpVar at 95% confidence level gives a maximum expected loss of \$18,297.00 pesos from which expected loss is \$2,760.00 and a non-expected loss of \$15,537.00 pesos. The latter estimation was conducted by selecting $\lambda = 1.2$ while $P[0.8 \leq \lambda \leq 1.5] = 0.70$, which is the average value for the Poisson distribution. In order to see how the OpVar behaves within the entire interval, the whole simulation process described previously was repeated for 6 different combinations of values of α , β and λ , the results are summarized in table 1, by setting $\lambda = \{\lambda | \lambda \in R, 0.8 < \lambda < 1.5\}$ since corner values produce no plausible Gamma distribution parameters. Table 1 shows all simulations.

Table 1. Monte Carlo Simulations Set

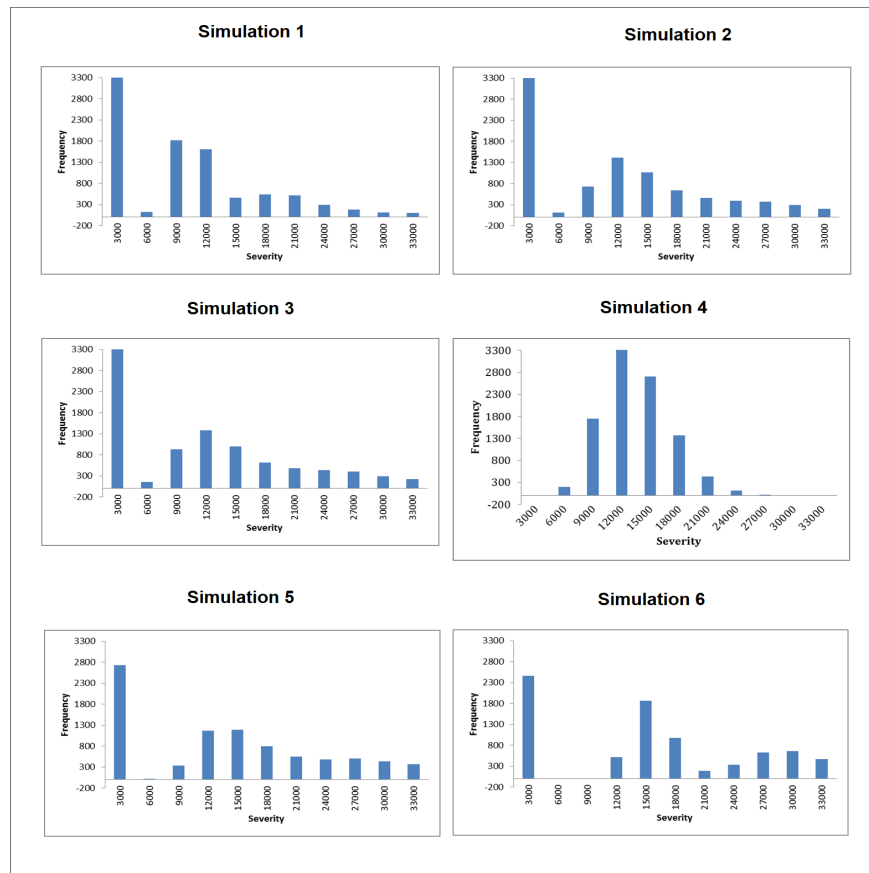
Simulation	Gamma distribution parameters	λ	OpVar
1	$\alpha \approx 26.4976$ $\beta \approx 0.0340$	0.9	\$12,106.78
2	$\alpha \approx 11.5406$ $\beta \approx 0.1024$	1.0	\$18,072.07
3	$\alpha \approx 11.1164$ $\beta \approx 0.0990$	1.1	\$16,895.16
4	$\alpha \approx 11.8273$ $\beta \approx 0.1015$	1.2	\$18,296.73
5	$\alpha \approx 15.5688$ $\beta \approx 0.0835$	1.3	\$18,854.13
6	$\alpha \approx 46.6428$ $\beta \approx 0.0300$	1.4	\$17,531.44

Source: Own elaboration

It is easy to see that OpVar increases as Poisson distribution parameter does it as well, in fact there is a positive correlation between them since $\rho_{\lambda, OpVar} =$

0.185514, thus been consistent with the theory. The corresponding losses values for the set of simulations are presented in Graphic 2 where it can be analyzed severity and frequency as well. In all simulations a small loss value, around \$3,000.00 pesos, present a high frequency among the 10,000 observations, then as losses values are getting higher frequency starts to decline until OpVar is reached, afterwards frequency and severity jointly decline. Most frequency distributions are bimodal shaped.

Graphic 2. Losses Values from Monte Carlo Simulation Set



Source: Own elaboration

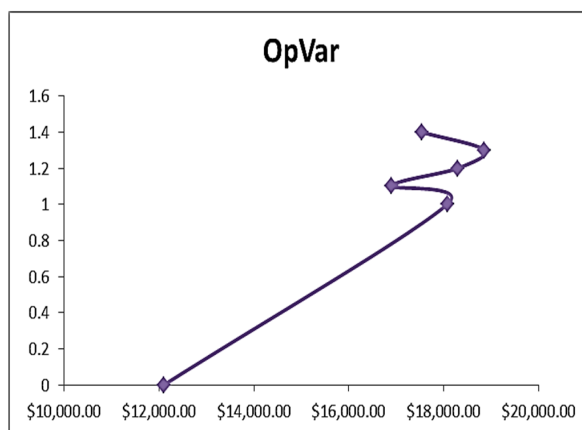
OR is characterized by the occurrence of low probability events with elevated severity, this kind of events rarely happen so there is not enough information available within financial institutions or statistically significance data bases that can be used to perform goodness-of-fit tests; most of this tests are based on the measurement of the distance between observed and estimated data. Nevertheless the above graphics show an acceptable distribution fit.

Also it is important to highlight that since knowing the economic impact as real as possible is desirable, a Monte Carlo without variance reduction must be

used. Monte Carlo simulations with variance reduction generate biased values, hence biased distributions.

On the other hand, when the expected number of events takes values from 0.9 to 1.4 then expected OpVar is \$16,959.39 pesos with a volatility of \$2,469.64 pesos, therefore OpVar dynamics can be easily shaped, see Graphic 3.

Graphic 3. OpVar Dynamics



Source: Own elaboration

As long as experts expected event increases, OpVar will increase as well. Even more, OpVar is bearable when only one losses event occurs nevertheless OpVar gets higher each time losses event occurs, it is important to highlight that OpVar tends to increase for integer values. As long as unexpected events occur twice a year at most, economic lost will be bounded \$16,000 and \$18,000 pesos. Consequently it is necessary for the firm to design a strategy to avoid losses events.

6. Conclusions

Through Bayesian inference theory the present research quantifies frequency and severity of Operational Risk. This method is based on parameters specifications from experts for an a priori distribution of frequency and severity distribution functions by using available data of a financial firm. Afterwards, observed data and parameters for a posteriori distribution estimations are weighted so OR capital is calculated for a year time line. Calculations are simple and one mayor advantage of this method relays in jointly considering experts knowledge and historical data for a financial firm, thus allows determining operational risk capital thru internal data. Furthermore, the model can be updated and calibrated as soon as new information comes up during financial firms operations, which will give more reliability and strength to modeling operational risk, and hence to inference collect from it as well. For a set of simulations it can be proved that a positive relation between OpVar and experts event values exists and that frequency and severity of losses is directly related to OpVar optimum value at 95% of confidence. Consequently, this research provides with an empirical model that uses prior information

usually delivered by experts within financial institutions so operational risk can be managed.

Main advantages of using Bayesian inference to calculate low frequency risks such as operational risk events, consist in getting stable values due to combining experts opinion and few available data along with the proposed methodology, also in specifying an apriority distribution so frequency and severity can be estimated simultaneously, in weighting the a priori distribution with current data to estimate a posteriori distribution in order to obtain new model parameters.

Finally, we can calibrate the network by incorporating new event information as it is obtained over time. It is important to note that the OpVar can be easily measured with little information even with one or two observations, so there is no dependence on a huge set of information. One disadvantage is that an experts opinion can be untrusted, so is recommendable the expert to be part of the core staff in the financial institution.

References

- BIS, (2005). Basel II: International Convergence of Capital Measurement and a Capital Standards: A Revised Framework. *Bank of International Settlements (BIS)*, www.bis.org
- Bühlmann, H., & Gisler, A. (2005). A Course in Credibility Theory and its Applications. *Springer-Verlag*, Berlin.
- Chavez-Deomulin, V., Embrechts, P., & Neslehová, P. (2006). Quantitative Models for Operational Risk: Extremes, Dependence and Aggregation. *Journal of Banking and Finance*. 30(10), pp. 2635-2658.
- Chen, J., Amrik, S., & Prajogo, D. (2013). Supply Chain Operational Risk Mitigation: A Collaborative Approach. *International Journal of Production Research*. 51(7), pp. 2186-2199.
- Circular nica de Bancos (CUB), 2005. *Secretaría de Hacienda y Crédito Público*.
- Chonawee, S., Kenyon, C., & Lucas, H., (2006). Cause to Effect Operational Risk Quantification and Management. *Risk Management Palgrave Macmillan Journals*. 8(1), pp. 16-42.
- Cruz, M. (2004). Operational Risk Modelling and Analysis: Theory and Practice. *Risk Books*, London.
- Martínez-Sánchez, J., & Venegas-Martínez, F (2013). Riesgo operacional en el proceso de pago del PROCAMPO: un enfoque Bayesiano. *Revista Contaduría y Administración*. 58(2), pp. 221-259.
- Martínez-Sánchez, J., & Venegas-Martínez, F (2013). Riesgo operacional en la banca trasnacional: un enfoque Bayesiano. *Ensayos Revista de Economía*. 32(1), pp. 31-72.
- Martínez-Sánchez, J., & Venegas-Martínez, F (2013). Riesgo operacional en el proceso de liquidación del Mercado Mexicano de Valores: un enfoque Bayesiano. *Investigación Económica*. 72(286), pp. 101-138.
- Venegas-Martínez, F. (2006). Riesgo operacional: Un enfoque Bayesiano. *Revista de Estadística, Econometría y Finanzas Aplicadas*. 4(6), pp. 181-193.
- Venegas-Martínez, F. (2008). Riesgos financieros y económicos. Productos derivados y decisiones económicas bajo incertidumbre, 2da. Edición. *Cengage Learning*, México.
- Klugman, S., Panjer, H., & Willmot, G. (2012). Loss Models: From Data to Decisions. *John Wiley & Sons, Inc.* New York. ISBN-10: 1118315324
- Zhou, X., Giacometti, R., Fabozzi, F., & Tucker, A. (2014). Bayesian Estimation of Truncated Data with Applications to Operational Risk Measurement. *Quantitative Finance*. 14(5), pp. 863-888.