



Revista Mexicana de Biodiversidad

ISSN: 1870-3453

falvarez@ib.unam.mx

Universidad Nacional Autónoma de  
México  
México

Ruiz-Campos, Gorgonio; Sánchez-González, Sergio; Mayden, Richard L.; Varela-Romero, Alejandro

Meristic and morphometric comparison of an undescribed sucker of the Río Culiacán ( *Catostomus* sp.) and Yaqui sucker ( *Catostomus bernardini* ) ( *Catostomidae*, *Teleostei*) from the Sierra Madre Occidental, Mexico

Revista Mexicana de Biodiversidad, vol. 87, núm. 2, junio, 2016, pp. 380-389

Universidad Nacional Autónoma de México  
Distrito Federal, México

Available in: <http://www.redalyc.org/articulo.oa?id=42546735009>

- How to cite
- Complete issue
- More information about this article
- Journal's homepage in redalyc.org

redalyc.org

Scientific Information System

Network of Scientific Journals from Latin America, the Caribbean, Spain and Portugal

Non-profit academic project, developed under the open access initiative



## Taxonomy and systematics

# Meristic and morphometric comparison of an undescribed sucker of the Río Culiacán (*Catostomus* sp.) and Yaqui sucker (*Catostomus bernardini*) (Catostomidae, Teleostei) from the Sierra Madre Occidental, Mexico

*Comparación merística y morfométrica de una especie no descrita de matalote del río Culiacán (Catostomus sp.) y el matalote yaqui (Catostomus bernardini) (Catostomidae, Teleostei) de la sierra Madre Occidental, México*

Gorgonio Ruiz-Campos<sup>a,\*</sup>, Sergio Sánchez-González<sup>b</sup>, Richard L. Mayden<sup>c</sup>,  
Alejandro Varela-Romero<sup>d</sup>

<sup>a</sup> Colección Ictiológica, Facultad de Ciencias, Universidad Autónoma de Baja California, Km. 103 Carr. Tijuana-Ensenada, 22870 Ensenada, Baja California, Mexico

<sup>b</sup> Escuela de Biología, Universidad Autónoma de Sinaloa, Calzada de Las Américas y Universitarios s/n, Ciudad Universitaria, 80040 Culiacán, Sinaloa, Mexico

<sup>c</sup> Department of Biology, Saint Louis University, 3507 Laclede Avenue, Saint Louis, MO 63103, USA

<sup>d</sup> Departamento de Investigaciones Científicas y Tecnológicas, Universidad de Sonora, Blvd. Luis Encinas y Rosales s/n, 83000 Hermosillo, Sonora, Mexico

Received 28 July 2015; accepted 24 November 2015

Available online 27 May 2016

## Abstract

Meristic and morphometric analyses and comparisons were conducted between an undescribed sucker of Río Culiacán (*Catostomus* sp.) and a Yaqui sucker (*Catostomus bernardini*) from the rivers Yaqui, Fuerte and Conchos in the Sierra Madre Occidental. A discriminant function analysis based on 44 characters (37 morphometric and 7 meristic) of 96 adult specimens yielded 20 characters to be significantly different ( $p < 0.01$ ) between the species. The morphological characters separating the populations of Río Culiacán basin (Humaya and Tamazula sub-basins) from those of rivers Fuerte, Río Yaqui and Río Conchos were associated with the highest values for number of gill rakers, posterior insertion of dorsal fin to posterior insertion of pelvic fin, posterior insertion of dorsal fin to posterior insertion of anal fin, and basal length of anal fin. Likewise, the discrimination was associated with the lowest values for predorsal distance, soft posterior ocular margin to occiput, and number of anal rays. The standardized coefficients for canonical variables 1 and 2 accounted 82.6% of the total variation. Specimens examined from the Río Culiacán basin represent an undescribed species in the Sierra Madre Occidental and they exhibit the lowest altitude distribution known for the members of this complex. All Rights Reserved © 2016 Universidad Nacional Autónoma de México, Instituto de Biología. This is an open access item distributed under the Creative Commons CC License BY-NC-ND 4.0.

**Keywords:** Morphology; Population comparison; Humaya and Tamazula rivers; Northwestern Mexico

## Resumen

Un análisis merístico y morfométrico comparativo fue realizado entre el matalote no descrito del río Culiacán (*Catostomus* sp.) y el matalote yaqui (*Catostomus bernardini*) de los ríos Yaqui, Fuerte y Conchos, en la Sierra Madre Occidental. El análisis de función discriminante para 44 caracteres morfológicos (37 morfométricos y 7 merísticos) de 96 especímenes adultos resultó significativo ( $p < 0.01$ ) para 20 caracteres entre las especies. Los caracteres morfológicos que separan a las poblaciones de la cuenca del río Culiacán (subcuencas Humaya y Tamazula) de aquellas de los ríos Yaqui, Fuerte y Conchos estuvieron asociados con los valores más altos del número de branquiespinas, las distancias entre inserción posterior de aleta dorsal e inserción posterior de aleta pélvica, distancia entre inserción posterior de aleta dorsal e inserción posterior de aleta anal, y longitud basal de aleta anal. Asimismo, la discriminación estuvo asociada con los valores más bajos de longitud predorsal, distancia entre

\* Corresponding author.

E-mail address: [gruiz@uabc.edu.mx](mailto:gruiz@uabc.edu.mx) (G. Ruiz-Campos).

Peer Review under the responsibility of Universidad Nacional Autónoma de México.

margen ocular posterior suave y occipucio, y número de radios anales. Los coeficientes estandarizados para las variables canónicas 1 y 2 explicaron conjuntamente el 82.6% de la variación total. Los especímenes de la cuenca del Río Culiacán representan una especie no descrita en la Sierra Madre Occidental y exhiben la distribución altitudinal más baja conocida para los miembros de este complejo.

Derechos Reservados © 2016 Universidad Nacional Autónoma de México, Instituto de Biología. Este es un artículo de acceso abierto distribuido bajo los términos de la Licencia Creative Commons CC BY-NC-ND 4.0.

*Palabras clave:* Morfología; Comparación poblacional; Ríos Humaya-Tamazula; Noroeste de México

## Introduction

The vast and unexplored Sierra Madre Occidental of Mexico (SMO) is one of the most important areas of radiation and speciation of the family Salmonidae in North America (Mayden et al., 2010) and possibly of other complexes of species belonging to the families Cyprinidae (Schönhuth et al., 2011; Schönhuth, Lozano-Vilano, Perdices, Espinosa, & Mayden, 2014; Schönhuth, Perdices, et al., 2014), Catostomidae (Siebert & Minckley, 1986) and Ictaluridae (Castañeda-Rivera, Grijalva-Chon, Gutiérrez-Millán, Ruiz-Campos & Varela-Romero, 2014; Varela-Romero, Hendrickson, Yepiz-Plascencia, Brooks, & Neely, 2011).

The SMO is a majesty orographic formation of 289,000 km<sup>2</sup> that comprises one-sixth of Mexican territory and that is thought to be an important corridor for historical radiation and vicariance events for freshwater fishes across North America (Miller & Smith, 1986). This mountain region is known for supporting rich and unique freshwater communities. Our current understanding of the causal factors for species distributions and community assemblages is only in its early stages (Schönhuth et al., 2011; Schönhuth, Lozano-Vilano, et al., 2014; Schönhuth, Perdices, et al., 2014; Smith & Miller, 1986).

The family Catostomidae is composed of 12 genera and 72 nominal species in North America (Page et al., 2013), of which 6 genera and 16 species occur in Mexico (Miller, Minckley, & Norris, 2005). The systematics and evolutionary relationships of the members of this family has been subject of several morphological and molecular studies that have resulted in changes in the taxonomic position and nomenclature of several taxa (Chen & Mayden, 2012; Clements, Bart, & Hurley, 2012; Doosey, Bart, Saitoh, & Miya, 2010; Harris & Mayden, 2001; Smith, 1992).

In the northern SMO and Chihuahuan Desert regions at least 8 species of the genus *Catostomus* have been taxonomically recognized (*C. bernardini* Girard 1856, *C. cahita* Siebert and Minckley, 1986, *C. clarkii* Baird and Girard 1854, *C. insignis* Baird and Girard 1854, *C. leopoldi* Siebert and Minckley, 1986, *C. nebuliferus* Garman 1881, *C. plebeius* Baird and Girard 1854, and *C. wigginsi* Herre and Brock 1936), of which *C. bernardini* has a wide distribution inhabiting both drainages of the Atlantic (Río Conchos) and Pacific (rivers Mayo, Yaqui and Fuerte) (Miller et al., 2005).

Meek (1902) described a new species of sucker (*Catostomus conchos*) from the Río Conchos at Jiménez, Chihuahua; however, Miller et al. (2005) synonymized it with Yaqui sucker (*Catostomus bernardini*) based on the similarity in the number

of lateral line scales, dorsal rays, body morphology and other details of the head skeleton, but pointed out the necessity of molecular genetic analysis to confirm this decision.

Hendrickson (1983) mentioned the possible occurrence of Yaqui sucker south of the Río Mayo basin, situation that was later confirmed by Hendrickson and Varela-Romero (2002) for the Río Fuerte basin. However, *Catostomus* has never been documented in the Río Culiacán basin.

Herein, we compare morphometric and meristic characteristics of populations of an undescribed species of *Catostomus* from Río Culiacán basin (Río Tamazula-Río Humaya sub-basins) with those populations of Yaqui sucker from the Río Fuerte, Río Conchos and Río Yaqui basins, in order to determine the magnitude and signification of the differences.

## Materials and methods

Specimens of suckers (*Catostomus bernardini* and *Catostomus* sp.) for the comparative morphological analysis were collected in 4 basins of the Sierra Madre Occidental (rivers Culiacán, Fuerte, Yaqui and Conchos) in the states of Sinaloa, Sonora, Chihuahua and Durango, during different periods between April 2001 and February 2012 (Fig. 1). The sampling sites are situated in elevations ranging from 432 m (Arroyo Surtato at Tepehuanes, Sinaloa) to 2,356 m (Río Verde ca. Puerto Blanco, Chihuahua). Specimens were captured with AC Smith-Root 15-B POW electrofishing equipment and cast nets. In the field, recently captured specimens were preserved in 95% ethanol and fin tissue samples were obtained for future genetic analysis. All the preserved specimens were finally deposited in the fish collection of the Universidad Autónoma de Baja California (Appendix 1).

Forty-four morphological characters (37 morphometric and 7 meristic characteristics) were examined in 96 adult specimens (Río Culiacán,  $n = 54$ ; Río Fuerte,  $n = 18$ ; Río Yaqui,  $n = 12$ ; and Río Conchos,  $n = 12$ ). Morphometric characters were based on box truss protocol (Bookstein et al., 1985) and Hubbs and Lagler (1958), while the meristics was based on Hubbs and Lagler (op cit.). The morphometric variables are shown in Figure 2 and described in Appendix 2. All linear measures were taken in millimeters (mm) on the left side of each specimen using a digital caliper (precision, 0.01 mm) connected to a PC. An exploratory analysis of the original body measures was performed in order to detect aberrant or inconsistent data. This analysis consisted in a correlation between the standard length and each morphometric

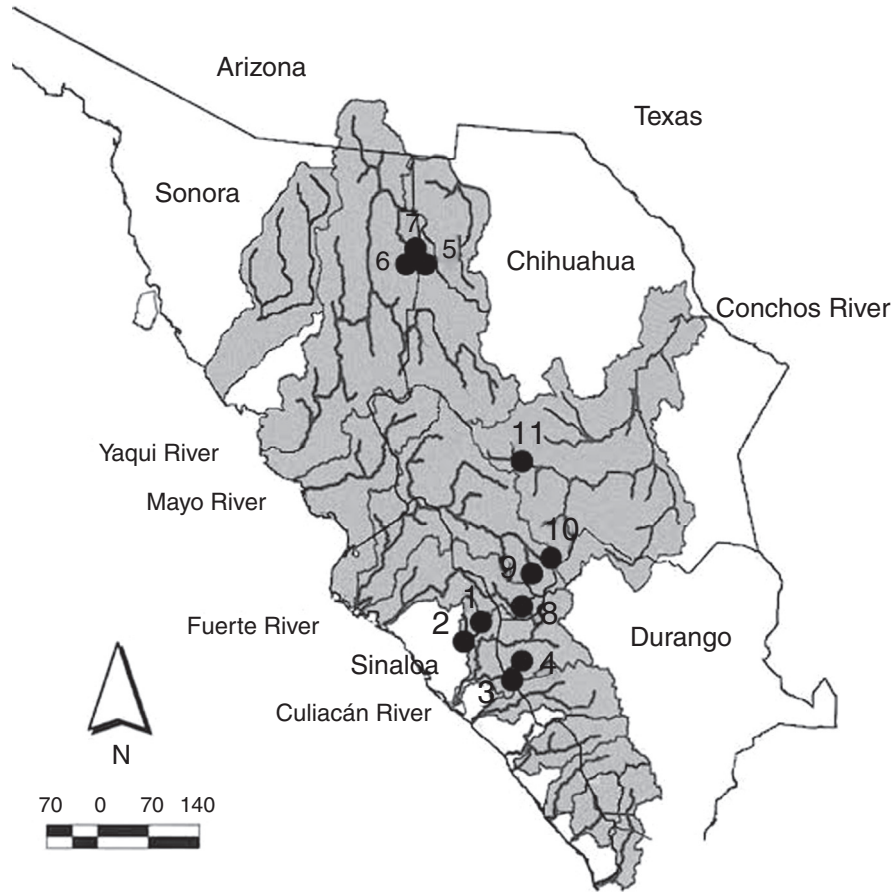


Figure 1. Collection sites for *Catostomus* sp. and *C. bernardini* in the Sierra Madre Occidental, Mexico. Numbers correspond to localities detailed in [Appendix 1](#).

character of the examined specimens, presented by means of a scatterplot.

The model for the standardization of the morphometric data of the examined specimens was the regression of [Elliott, Haskard, and Koslow \(1995\)](#), which removes the size component from the shape measurements (allometry) and homogenizes their variances ([Jolicoeur, 1963](#)). This model is defined by the following equation:  $M_s = M_o (L_s/L_o)^b$ , where  $M_s$  = standardized measurement,  $M_o$  = measured character length (mm),  $L_s$  = overall (arithmetic) mean standard length (mm) for all individuals from all populations of each taxon,  $L_o$  = standard length (mm) of specimen, and “b” was estimated for each character from the observed data using the non-linear equation,  $M = a L^b$ . Parameter “b” was estimated as the slope of the regression of  $\log M_o$  on  $\log L_o$ , using every fish in every population or basin.



Figure 2. Landmarks for box truss protocol in populations of *Catostomus* sp. and *C. bernardini* from the Sierra Madre Occidental, Mexico.

Both standardized measurements and meristic data of the studied sucker populations were analyzed among drainages and within the Río Culiacán drainage, and compared by means of a “forward stepwise” discriminate function analysis (DFA) using Statistica 6.0 (StatSoft, Inc., Tulsa, OK, 2002). This multivariate analysis allowed us to determine which combinations of variables best discriminated among populations and detected which populations were the most different.

The statistical significance of the discrimination among populations was determined using Wilk’s lambda ( $\lambda$ ), which oscillates from 0.0 (perfect discrimination power) to 1.0 (absence of discrimination power). The standardized coefficients of the canonical variables were determined for estimating the contribution of each variable in each canonical function; thus, the value of each standardized coefficient indicates the power of separation or discrimination of the variable into the analysis ([Pires-Da Silva, Imhoff, Giarola, & Tormena, 2001](#)).

Finally, we built tree diagrams based in the squared Mahalanobis’ distances of the morphological characters examined in order to illustrate the separation and relationships among the compared populations.

## Results

Specimens examined of *Catostomus* sp. ( $n=54$ ) for morphometry and meristics were from the 2 sub-basins of the Río

Table 1

Values of lambda of Wilks and its significance ( $p$ ) and tolerance for 36 meristic and morphometric variables selected by forward stepwise discriminant function analysis (DFA) for populations of *Catostomus* sp. ( $n=54$ ) and *C. bernardini* ( $n=42$ ) from northwestern Mexico. DFA summary; steps: 32; number of variables in model: 32; grouping: basins. Wilk's lambda: 0.00145, approx.  $F(96,183) = 15.063$ ,  $p < 0.0000$ .

Variable	Wilks' lambda	Partial lambda	F-remove (3,61)	p-Level	Tolerance
Lateral line scales	0.004275	0.338819	39.67905	0.000000	0.397361
Gill-rakers	0.001663	0.870822	3.01626	0.036645	0.350035
M 7-10	0.001608	0.900605	2.24409	0.092158	0.311610
Pectoral fin length	0.002060	0.703021	8.58946	0.000077	0.289642
Dorsal fin length	0.002176	0.665555	10.21763	0.000015	0.318512
Pectoral fin rays	0.002076	0.697712	8.80956	0.000061	0.433354
M 2-3	0.001752	0.826504	4.26829	0.008419	0.343242
Pelvic fin length	0.001527	0.948283	1.10893	0.352475	0.241703
Dorsal fin rays	0.001670	0.867263	3.11207	0.032701	0.479891
Anal fin length	0.001752	0.826702	4.26239	0.008477	0.229683
M 9-10	0.001808	0.800863	5.05596	0.003416	0.064359
M 1-2	0.001940	0.746541	6.90341	0.000446	0.091178
M 1-3	0.001693	0.855513	3.43407	0.022334	0.222907
Head length	0.001644	0.881032	2.74565	0.050590	0.171346
M 5-7	0.001579	0.917127	1.83735	0.149829	0.090134
M 8-10	0.001599	0.905696	2.11718	0.107269	0.394294
M 10-11	0.001839	0.787529	5.48581	0.002105	0.059478
M 9-11	0.001752	0.826667	4.26342	0.008467	0.034822
M 1-5	0.001862	0.777653	5.81373	0.001461	0.058659
M 2-5	0.001739	0.832968	4.07737	0.010507	0.065890
M 7-8	0.001705	0.849342	3.60676	0.018222	0.144576
M 6-7	0.001692	0.856122	3.41717	0.022785	0.110351
Interorbital distance	0.001726	0.839018	3.90135	0.012901	0.326642
M 2-4	0.001542	0.939221	1.31581	0.277446	0.302326
M 1-4	0.001740	0.832176	4.10061	0.010227	0.186101
M 4-7	0.001771	0.817898	4.52714	0.006246	0.082840
M 6-8	0.001646	0.880027	2.77202	0.049023	0.374610
M 4-6	0.001621	0.893592	2.42128	0.074551	0.161411
M 5-8	0.001614	0.897263	2.32818	0.083336	0.080017
Least depth	0.001532	0.945359	1.17524	0.326597	0.337661
M 5-6	0.001532	0.945162	1.17975	0.324904	0.124645
Body depth	0.001528	0.947628	1.12376	0.346529	0.239410

Culiacán (Humaya and Tamazula), while those of *Catostomus bernardini* ( $n=42$ ) were from 3 basins (Fuerte, Yaqui and Conchos). Thirty-two of the 44 meristic and morphometric variables examined entered in the stepwise forward function discriminant analysis. The global Wilks lambda ( $\lambda$ ) was 0.00145 ( $p < 0000$ ), indicating a high degree of discrimination among the populations of the compared basins. The 5 most significant variables ( $p < 0.001$ ) included lateral line scales ( $\lambda = 0.00428$ ), length of dorsal fin ( $\lambda = 0.00218$ ), pectoral fin rays ( $\lambda = 0.00208$ ), length of pectoral fin ( $\lambda = 0.00206$ ) and the distance between the point of snout to occiput (M1-2,  $\lambda = 0.00194$ ; Table 1).

For the standardized coefficients for canonical variables, the canonic roots 1 and 2 explained 54.9% and 27.6% of the observed total variation, respectively (Table 2). Combined the canonical roots, accounted 82.6% of the total variation in the compared populations. In canonical root 1, 4 variables exerted the major effects: M9-11 (anterior insertion of anal fin to mid caudal base,  $Y = 1.23094$ ), number of scales in lateral line ( $Y = -1.13661$ ), M10-11 (posterior insertion of anal fin to mid caudal base,  $Y = -1.20138$ ), and M9-10 (basal length of anal fin,  $Y = -0.96193$ ).

At the population level, the highest squared Mahalanobis' distance (117.52) was registered between those of the Río Culiacán

and Río Conchos basins, while the lowest distance (40.93) was between the Río Culiacán and Río Fuerte basins (Table 3). The tree diagram resulting from the squared Mahalanobis' distances (Fig. 3), which indicates the degree of discrimination among

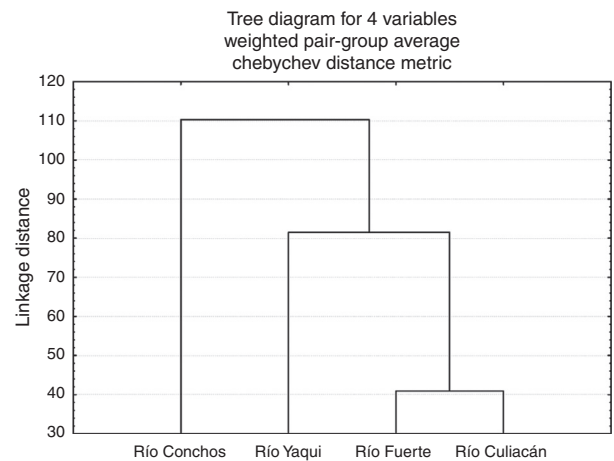


Figure 3. Tree diagram resulting from the squared Mahalanobis' distances for populations of suckers (*Catostomus* sp. and *C. bernardini*) from 4 basins in the Sierra Madre Occidental, Mexico.



**Table 2**  
Standardized coefficients for canonical variables resulting from the forward step-wise discriminant function analysis for meristic and standardized morphometric data of populations of *Catostomus* sp. ( $n = 54$ ) and *C. bernardini* ( $n = 42$ ) from northwestern Mexico.

Variable	Root 1	Root 2	Root 3
Lateral line scales	-1.13661	0.31966	0.66930
Gill-rakers	0.03880	0.61799	0.19899
M 7-10	0.24971	0.06303	0.56035
Pectoral fin length	-0.37436	0.92310	-0.42286
Dorsal fin length	-0.01055	-0.97613	0.51069
Pectoral fin rays	-0.28200	0.51461	-0.69071
M 2-3	-0.60280	0.42696	-0.08483
Pelvic fin length	0.32650	-0.35616	-0.06067
Dorsal fin rays	-0.10592	0.36754	-0.42441
Anal fin length	0.52964	0.22215	0.74039
M 9-10	-0.96193	1.24873	-1.02512
M 1-2	0.62937	1.26144	-1.11208
M 1-3	0.23344	-0.24049	0.81679
Head length	-0.74827	-0.11900	-0.44007
M 5-7	-0.20824	-1.00010	-0.03597
M 8-10	-0.00671	0.11488	-0.52705
M 10-11	-1.20138	1.51895	-0.49221
M 9-11	1.23094	-1.76918	0.99719
M 1-5	0.01352	-2.04992	0.35320
M 2-5	0.20864	1.62455	-0.46612
M 7-8	0.76544	0.23212	-0.73890
M 6-7	-0.17612	-1.20059	0.10897
Interorbital distance	0.03821	-0.73045	-0.16821
M 2-4	0.26648	0.39172	-0.00005
M 1-4	-0.43378	0.83054	0.38358
M 4-7	-0.74126	1.16220	0.78068
M 6-8	-0.05635	-0.54399	-0.26509
M 4-6	0.34770	-0.62538	-0.49780
M 5-8	-0.23085	0.89399	0.80640
Least depth	0.34547	-0.23548	-0.04443
M 5-6	-0.19651	-0.03600	-0.70117
Body depth	-0.31217	0.21872	0.32345
Eigenval	14.27227	7.17532	4.53000
Cum. prop.	0.54941	0.82562	1.00000

populations, revealed a shorter distance between the populations of *Catostomus* from Río Culiacán and Río Fuerte basins, but combined they had greater distances with those of *C. bernardini* populations from the Río Yaqui and Río Conchos basins (Fig. 3).

The percentage of correct classification of individuals in the examined populations by means of the discriminant function analysis was 100%, indicating that all individuals across the different drainages were correctly classified into their respective populations (see scatterplots in Fig. 4). In the scatterplot graph for roots 1 and 2 (Fig. 4A), the Río Culiacán and Río Fuerte

**Table 3**  
Squared Mahalanobis distances for meristic and morphometric characters among populations of *Catostomus* sp. (Culiacán basin,  $n = 54$ ) and *Catostomus bernardini* (Fuerte, Yaqui, and Conchos basins,  $n = 42$ ).

Basin	Río Culiacán	Río Fuerte	Río Yaqui	Río Conchos
Río Culiacán	0.00000	40.9369	90.3880	117.5248
Río Fuerte	40.9369	0.0000	72.5887	110.6719
Río Yaqui	90.3880	72.5887	0.00000	106.4698
Río Conchos	117.5248	110.6719	106.4698	0.00000

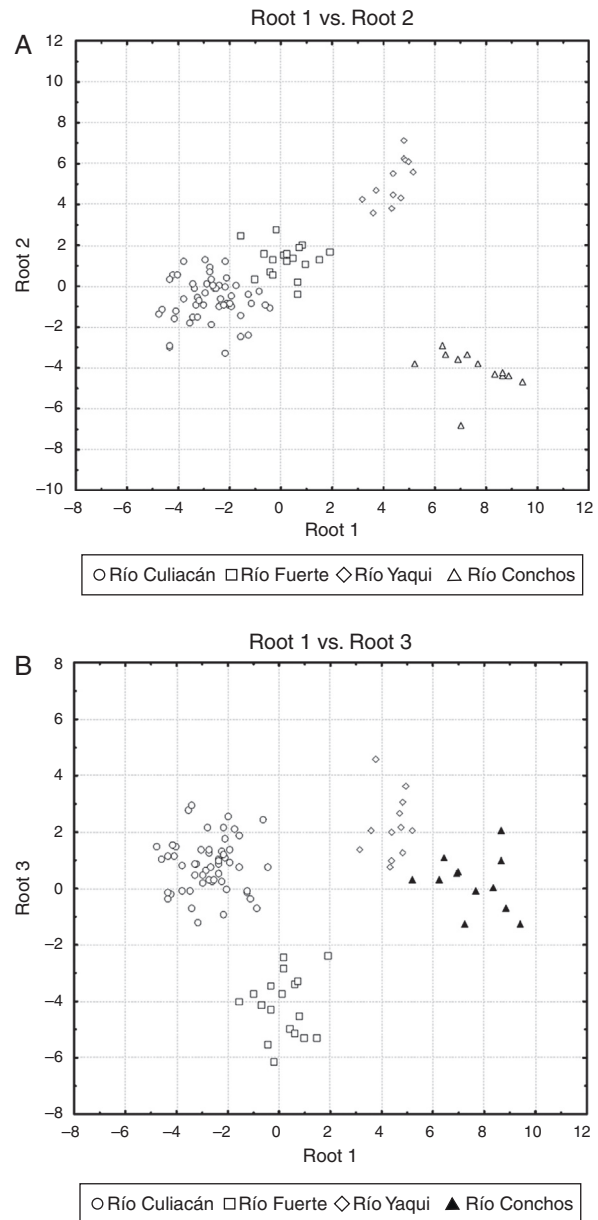


Figure 4. Scatter plots of centroids of populations for suckers (*Catostomus* sp. and *C. bernardini*) in northwestern Mexico. (A) Root 1 vs. root 2, and (B) root 1 vs. root 3 (see Table 2 for canonical coefficients).

populations appear as juxtaposed groups, while the Río Yaqui and Río Conchos populations are widely separated from each other. Likewise, in the scatterplot for the roots 1 and 3 (Fig. 4B), the Río Conchos and Río Yaqui populations are in juxtaposition, while those of the Culiacán and Río Fuerte are widely separated from each other.

The morphological characters separating the populations of Río Culiacán basins from those of Río Fuerte, Río Yaqui and Río Conchos basins were associated with the highest values for number of gill rakers (>34, Fig. 5I), posterior insertion of dorsal fin to posterior insertion of pelvic fin (M7-8, Fig. 5E), posterior insertion of dorsal fin to posterior insertion of anal fin (M7-10, Fig. 5F), and basal length of anal fin (M9-10, Fig. 5G). Likewise, separation of populations from the Río Culiacán basin

were associated with the lowest values for predorsal distance (M1-5, Fig. 5B), soft posterior ocular margin to occiput (M2-3, Fig. 5C), and anal rays (Fig. 5H).

The number of scales along the lateral line for populations from either the Río Culiacán or Río Fuerte was very similar, having less than 67 scales (Fig. 5J); however, this character distinguishes populations from these 2 drainages from those of the Río Conchos and Río Yaqui basins (>70 scales, Fig. 5J). Furthermore, the length of the pectoral fin in specimens from the

Río Culiacán basin is greater than that of specimens from the Río Fuerte and Río Yaqui basins, although to a lesser extent in comparison with specimens from the Río Conchos (Fig. 5A). Additionally, the average number and standard deviation of pharyngeal teeth is notably higher in specimens of Río Conchos ( $41 \pm 5.9$ ) and Río Culiacán ( $39 \pm 11.2$ ) in comparison with those of Río Fuerte ( $30 \pm 1.34$ ) and Río Yaqui ( $26 \pm 2.60$ ).

The discriminant function analysis (forward stepwise) for populations grouped by subbasins also had a significant Wilk's

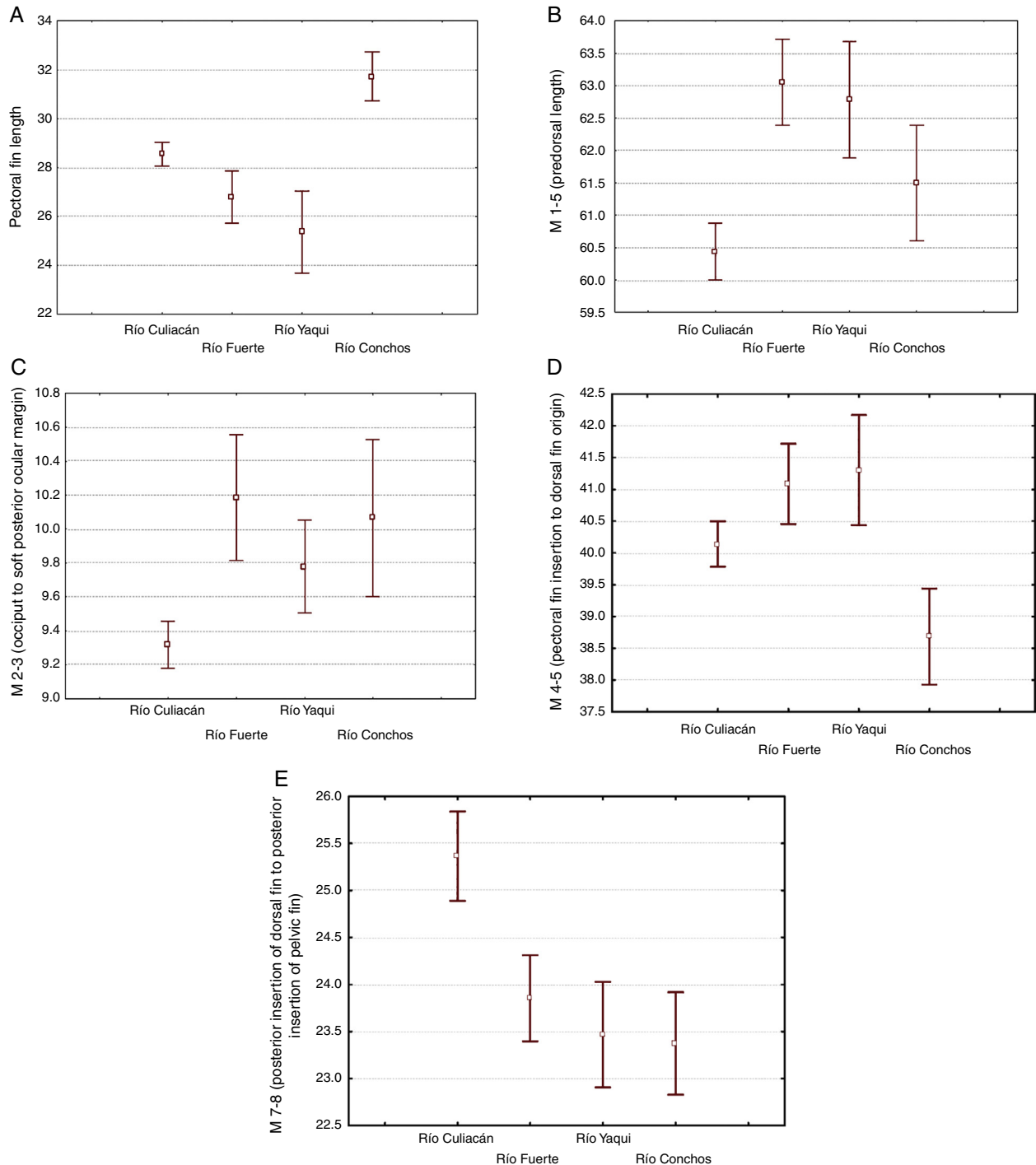


Figure 5. Box plots (average and 0.95 confidence interval) of the 10 most remarkable meristic and standardized morphometric characters for separating the populations of suckers (*Catostomus* sp. and *C. bernardini*) from 4 basins in the Sierra Madre Occidental, Mexico.

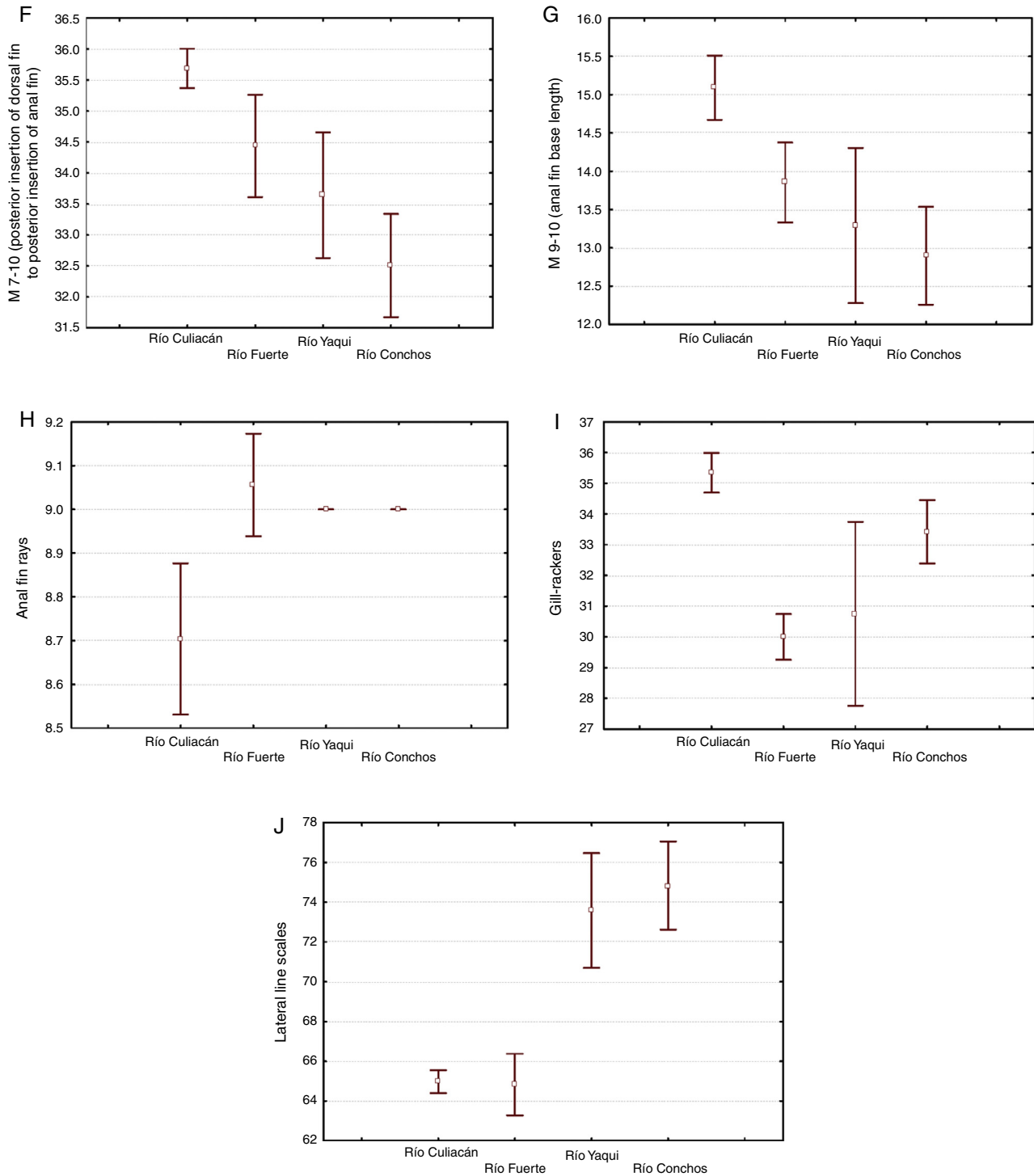


Figure 5. (Continued).

lambda value ( $\lambda = 0.0000024$ ,  $p < 0.0000$ ). In this analysis 34 variables were considered in the model, of which 22 variables resulted to be significant ( $p < 0.05$ ). The 5 most significant variables ( $p < 0.001$ ) were scales of lateral line ( $\lambda = 0.000007$ ), number of gill-rakers ( $\lambda = 0.000005$ ), dorsal fin length ( $\lambda = 0.000005$ ), pectoral fin rays ( $\lambda = 0.000004$ ) and pectoral fin length ( $\lambda = 0.000004$ ).

In the predicted classification of individuals for the populations of *Catostomus* of the different subbasins compared, all the individuals were correctly assigned into their corresponding populations. Canonical root 1 explained 48.07% of the total variation, while the roots 2, 3 and 4 explained, in an accumulative manner 68.64%, 79.91%, and 88.16%, respectively. The tree diagram resulting from squared Mahalanobis' distance displayed 2



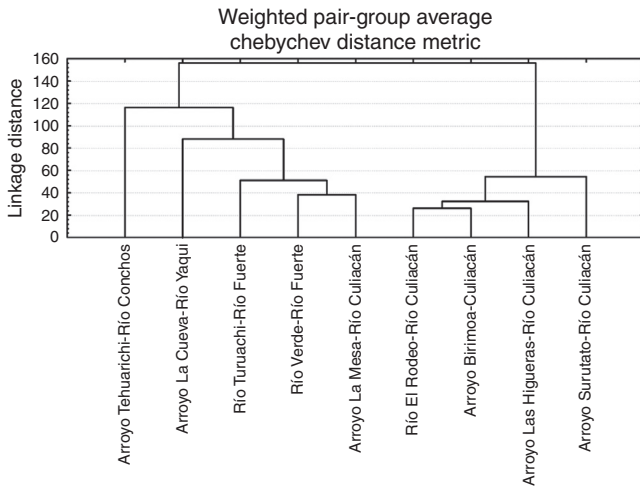


Figure 6. Tree diagram resulting from the squared Mahalanobis' distances for populations of suckers (*Catostomus* sp.) from 4 basins in the Sierra Madre Occidental, Mexico.

main groups, one formed by the populations [subbasins] of the Río Culiacán, and other formed by the populations [subbasins] from the rivers Conchos, Yaqui and Fuerte, including one population from upper Río Culiacán (Arroyo La Mesa) (Fig. 6).

The breeding coloration of suckers from Arroyo El Rodeo in December (Fig. 7A), a tributary to Río Tamazula (Río Culiacán

basin sucker) is dark brown on the dorsum and sides, contrasting with the shiny white in the ventral region. Coloration of fins, except for caudal, is orange-yellow. Lips and cheeks are also orange-yellow. A whitish band borders the anal, while the dorsal fin is tipped with black; the caudal fin is dark brown. Specimens of suckers from Arroyo Las Higuera (a tributary to Río Humaya, Río Culiacán basin) showed a dark brown dorsum contrasting with the shiny white coloration of sides and belly speckled with orange spots (Fig. 7C). In the case of the Río Conchos sucker, the live body coloration of ripe adults is greenish gray on dorsum and sides with a shiny white venter (Fig. 7E). Specimens from Arroyo La Presita (Río Yaqui basin) showed a yellowish brown coloration on dorsum and sides with irregular dark gray blotches (Fig. 7G), as well as an orange-yellow anal fin, and the venter and areas around the insertion of pectoral and pelvic fins has a pearl white tonality.

## Discussion

The complex of *Catostomus* inhabiting the different basins draining the Sierra Madre Occidental (SMO) has possibly resulted from an evolutionary radiation within the *Catostomus* lineage that began from the Miocene, and that included episodic orographic events, periods of progressive aridity, and most recently the Pleistocene pluvial cycles (Schonhuth, Doadrio, &

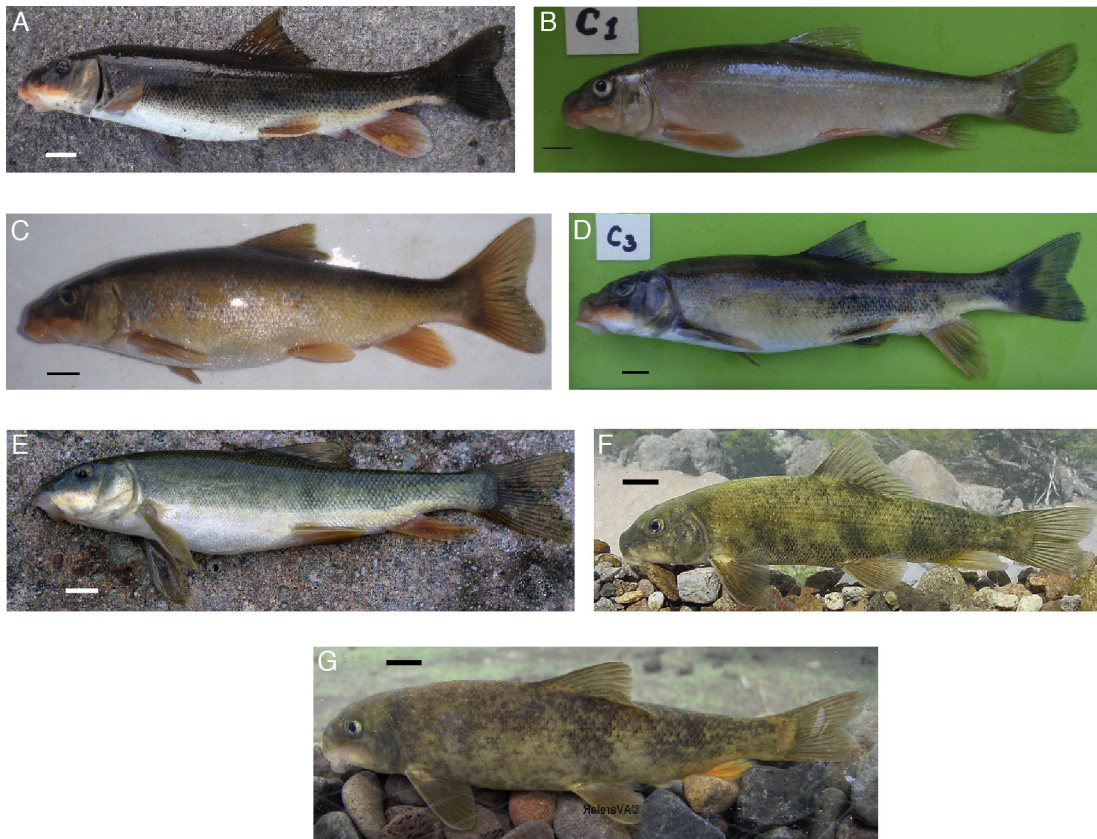


Figure 7. Life coloration of suckers (*Catostomus* sp. and *Catostomus bernardini*) from the Sierra Madre Occidental, México. (A) *Catostomus* sp., Arroyo El Rodeo (Río Tamazula subbasin), (B) *Catostomus* sp., Río Birimoa (Río Tamazula subbasin), (C) *Catostomus* sp., Arroyo Las Higuera (Río Humaya subbasin), (D) *Catostomus* sp., Arroyo Surutato (Río Humaya subbasin), (E) *Catostomus bernardini*, Río Conchos basin, (F) *Catostomus bernardini*, Arroyo Verde (Río Fuerte basin), and (G) *Catostomus bernardini*, Arroyo La Presita (Río Yaqui basin). Photographs by Sergio Sánchez-González (A–D), Gorgonio Ruiz-Campos (E and F), and Alejandro Varela-Romero (G). Bar length = 1 cm.

Mayden, 2006; Schonhuth et al., 2011; Schonhuth, Perdices, et al., 2014; Smith et al., 2002). The long-term isolation of major basins has resulted in the differentiation of the forms of *Catostomus* inhabiting the SMO. Other complexes of populations or species that have experimented adaptive radiations into the SMO are those described for the genera *Gila* (Schonhuth, Perdices, et al., 2014), *Codoma* (Schonhuth, Lozano-Vilano, et al., 2014), and *Ictalurus* (Varela-Romero et al., 2011).

The population of Yaqui sucker from the Río Conchos basin was originally described as *Catostomus conchos* (Meek, 1902) and later synonymized with *C. bernardini* by Miller et al. (2005) due to the similarities of some morphological characters (number of scales in lateral line, dorsal fin rays, body morphology and details of the head skeleton). Our analysis showed that at least 3 characters distinguish *C. conchos* from other *C. bernardini* populations in the Sierra Madre Occidental; these characters include a greater length of pectoral fin, shorter distance between the insertion of pectoral fin to dorsal fin origin, and higher number of pharyngeal teeth (>34). The average number of pharyngeal teeth was higher in specimens from Río Conchos (41), in comparison with those from Río Culiacán (39), Río Fuerte (31) and Río Yaqui (26).

The populations of *Catostomus* sp. from Río Humaya (Sinaloa) and Río Tamazula (Durango) sub-basins reported herein, were all recorded at altitudes ranging from 432 m (Arroyo Surutato at Tepehuanes, Sinaloa) to 480 m (Arroyo Birimoa at Tamazula, Durango), representing in both cases the lowest elevation ranges for populations within the Yaqui sucker complex.

Finally, a molecular genetic analysis of the metapopulations of *Catostomus* “*bernardini*” through the Sierra Madre Occidental, including the undescribed sucker of the Río Culiacán, may clarify the taxonomical and evolutionary relationships of the populations studied here, as well as their degree of biological differentiation.

## Acknowledgements

We thank Héctor M. Inzunza-Beltrán, Gonzalo Valdéz-Sánchez and Faustino Camarena-Rosales for helping in the fish sampling at the different basins studied. The sampling of suckers in the Sierra Madre Occidental was funded by the Conacyt de México (Grant 33528-V). Two anonymous reviewers made useful comments on the manuscript. Finally, we thank Nohelia Pacheco-Hoyos for making the map of the study area.

## Appendix 1.

Material examined of *Catostomus* sp. and *Catostomus bernardini* from the Sierra Madre Occidental, Mexico. (The numbers of localities indicated in bold are those depicted in Fig. 1).

*Catostomus* sp. Sinaloa. Río Culiacán basin (Río Humaya sub-basin). Locality 1: UABC-2921 ( $n=13$ , 146.1–182.1 mm SL), Arroyo Las Higueras at Badiraguato (25°37'59.64" N, 107°32'9.68" W, 469 masl), 13 December 2011; UABC-2925

( $n=12$ , 139.1–183.6 mm SL). Locality 2: Arroyo Surutato at Tepehuanes, Badiraguato (25°36'15.61" N, 107° 34'55.73" W, 432 masl), 29 February 2012.

*Catostomus* sp. Durango. Río Culiacán basin (Río Tamazula sub-basin). Locality 3: UABC-2919 ( $n=12$ , 116.6–164.9 mm SL), Arroyo El Rodeo at Tamazula (24°54'40.71" N, 106° 46'56.62" W, 450 masl), 9 December 2011. Locality 4: UABC-2922 ( $n=12$ , 99.6–123.0 mm SL), Arroyo Birimoa (=Guadalupe Urrea) at Tamazula (25°02'24.62" N, 106°43'10.33 W, 480 masl) 25 February 2012.

*Catostomus bernardini*. Sonora. Río Yaqui basin (Río Bavispes sub-basin). Locality 5: UABC-1109 ( $n=3$ , 87.6–96.1 mm SL), Arroyo La Presita at Mesa de Tres Ríos, Nacori Chico (29°48'32.8" N, 108°43'12.6" W, 1658 masl), 25 April 2001. Locality 6: UABC-1110 ( $n=3$ , 80.8–81.4 mm SL) Arroyo El Palmilloso at Mesa de Tres Ríos, Nacori Chico (29°49'1.9" N, 108°43'38.7" W, 1613 masl), 15 June 2001. Locality 7: UABC-1111 ( $n=6$ , 87.9–105.1 mm SL), Arroyo La Cueva at Mesa de Tres Ríos, Nacori Chico (29°49'1" N, 108°43'32.8" W, 1611 masl), 23 April 2001.

*Catostomus bernardini*. Chihuahua. Río Culiacán basin (Río Agua Blanca, headwater). Locality 8: UABC-1174 ( $n=1$ , 153.8 mm SL) and UABC-1186 ( $n=4$ , 114.7–174.3 mm SL), Arroyo Mesa de San Rafael at Soledad de Agua Blanca, Guadalupe y Calvo (25°48'17.4" N, 106°40'42.2" W, 2320 masl), 26 June 2001. Río Fuerte basin (Río Turuachi sub-basin). Locality 9: UABC-1172 ( $n=12$ , 90.3–128.1 mm SL) Río Turuachi at Turuachi, Guadalupe y Calvo (26°07'46.4" N, 106°42'23.7" W, 2092 masl), 24 June 2001. Locality 10: UABC-1181 ( $n=6$ , 97.8–150.6 mm SL), Arroyo Verde ca. Puerto Blanco, Guadalupe y Calvo (26°16'31.0" N, 106°29'13.9" W, 2356 masl), 24 June 2001; Río Conchos basin. Locality 11: UABC-2024 ( $n=4$ , 121–170.8 mm SL), UABC-2025 ( $n=4$ , 140.9–154.8 mm SL) and UABC-2037 ( $n=4$ , 116.2–169.5 mm SL) Río Conchos at Tehuerichi, Bocoyna (27°36'29.8" N, 107°13'47.3" W, 1916 masl), 19 March 2006.

## Appendix 2.

Measurements (M) and counts for populations of suckers of *Catostomus* sp. and *Catostomus bernardini* from northwestern Mexico (see Fig. 2 for body landmarks).

Dorsal fin rays, pectoral fin rays, pelvic fin rays, anal fin rays, caudal fin rays, lateral line scales, number of gill rakers, pharyngeal teeth, body depth, least depth, head length, dorsal fin length, pectoral fin length, pelvic fin length, anal fin length, caudal fin length, space between nares, inter-ocular distance, eye diameter, point of snout to occiput (M 1-2), point of snout to soft anterior ocular margin (M 1-3), point of snout to pectoral fin insertion (M 1-4), predorsal length (M 1-5), occiput to soft posterior ocular margin (M 2-3), occiput to pectoral fin insertion (M 2-4), occiput to dorsal fin origin (M 2-5), pectoral fin insertion to dorsal fin origin (M 4-5), pectoral fin insertion to anterior insertion of pelvic fin (M 4-6), pectoral fin insertion to posterior insertion of dorsal fin (M 4-7), pectoral fin insertion to posterior insertion of pelvic fin (M 4-8), dorsal fin origin

to anterior insertion of pelvic fin (M 5-6), length of dorsal fin base (M 5-7), dorsal fin origin to posterior insertion of pelvic fin (M 5-8), anterior insertion of pelvic fin to posterior insertion of dorsal fin (M 6-7), basal length of pelvic fin (M 6-8), anterior insertion of pelvic fin to anterior insertion of anal fin (M 6-9), posterior insertion of dorsal fin to posterior insertion of pelvic fin (M 7-8), posterior insertion of dorsal fin to anal fin origin (M 7-9), posterior insertion of dorsal fin to posterior insertion of anal fin (M 7-10), posterior insertion of dorsal fin to mid caudal base (M 7-11), posterior insertion of pelvic fin to anal fin origin (M 8-9), posterior insertion of pelvic fin to posterior insertion of anal fin (M 8-10), posterior insertion of pelvic fin to mid caudal base (M 8-11), length of anal fin base (M 9-10), anal fin origin to mid caudal base (M 9-11) and posterior insertion of anal fin to mid caudal base (M 10-11).

## References

- Bookstein, F. L., Chernoff, B., Elder, R. L., Humphries, J. M., Smith, G. R., Jr., & Strauss, R. E. (1985). *Morphometrics in evolutionary biology: the geometry of size and shape change, with examples from fishes*. Philadelphia: The Academy of Natural Sciences of Philadelphia (Special Publication 15).
- Castañeda-Rivera, M., Grijalva-Chon, J. M., Gutiérrez-Millán, L. E., Ruiz-Campos, G., & Varela-Romero, A. (2014). Analysis of the *Ictalurus pricei* complex (Teleostei: Ictaluridae) in northwest Mexico based on mitochondrial DNA. *The Southwestern Naturalist*, 59, 434–438.
- Chen, W. J., & Mayden, R. L. (2012). Phylogeny of suckers (Teleostei: Cypriniformes: Catostomidae): further evidence of relationships provided by the single-copy nuclear gene IRBP2. *Zootaxa*, 3586(SI), 195–210.
- Clements, M. D., Bart, H. L., Jr., & Hurley, D. L. (2012). A different perspective on the phylogenetic relationships of the Moxostomatini (Cypriniformes: Catostomidae) based on cytochrome-b and Growth Hormone intron sequences. *Molecular Phylogenetics and Evolution*, 63, 159–167.
- Doosey, M. H., Bart, H. L., Jr., Saitoh, K., & Miya, M. (2010). Phylogenetic relationships of catostomid fishes (Actinopterygii: Cypriniformes) based on mitochondrial ND4/ND5 gene sequences. *Molecular Phylogenetics and Evolution*, 54, 1028–1034.
- Elliott, N. G., Haskard, K., & Koslow, J. A. (1995). Morphometric analysis of orange roughy (*Hoplostethus atlanticus*) of the continental slope of southern Australia. *Journal of Fish Biology*, 46, 202–220.
- Harris, P. M., & Mayden, R. L. (2001). Phylogenetic relationships of major clades of Catostomidae (Teleostei: Cypriniformes) as inferred from mitochondrial SSU and LSU rDNA sequences. *Molecular Phylogenetics and Evolution*, 20, 225–237.
- Hendrickson, D. A. (1983). Distribution records of native and exotic fishes in Pacific drainages of northern Mexico. *Journal of Arizona-Nevada Academy of Science*, 18, 33–38.
- Hendrickson, D. A., & Varela-Romero, A. (2002). Fishes of the Río Fuerte drainage. In M. L. Lozano-Vilano (Ed.), *Libro jubilar en honor al Dr. Salvador Contreras-Balderas* (pp. 172–195). Monterrey: Universidad Autónoma de Nuevo León.
- Hubbs, C. L., & Lagler, K. L. (1958). Fishes of the Great Lakes. *Cranbrook Institute of Science Bulletin*, 26, 1–213.
- Jolicoeur, P. (1963). The multivariate generalization of the allometry equation. *Biometrics*, 19, 497–499.
- Mayden, R. L., Dillman, C. B., Espinosa-Pérez, H., Tomelleri, J. R., Kuhajda, B. R., Hendrickson, D. A., et al. (2010). Evolution and diversity of trout species in México. In R. F. Carline, & C. Lo Sapio (Eds.), *Conserving wild trout* (pp. 134–144). Bozeman, Montana: Proceedings of the Wild Trout X Symposium.
- Meek, S. E. (1902). A contribution to the ichthyology of Mexico. *Field Columbian Museum Publication. Zoological Series*, 3, 63–128.
- Miller, R. R., & Smith, M. L. (1986). Origin and geography of the fishes of Central Mexico. In C. H. Hocutt, & E. O. Wiley (Eds.), *The zoogeography of North American freshwater fishes* (pp. 487–519). New York: Wiley-Interscience Publications.
- Miller, R. R., Minckley, W. L., & Norris, S. M. (2005). *Freshwater fishes of México*. Chicago: The University of Chicago Press.
- Page, L. M., Espinosa-Pérez, H., Findley, L. T., Gilbert, C. R., Lea, R. N., Mandrak, N. E., et al. (2013). *Common and scientific names of fishes from the United States, Canada and Mexico* (7th ed.). Bethesda: American Fisheries Society (Special Publication 34).
- Pires-Da Silva, A., Imhoff, S., Giarola, N. F. B., & Tormena, C. A. (2001). Análisis multivariado y univariado en la discriminación de sistemas de uso de suelos del centro de Santa Fe. *Edafología*, 8, 21–34.
- Schonhuth, S., Doadrio, I., & Mayden, R. L. (2006). A biogeographic perspective of the phylogeny of Mexican cyprinids (Actinopterygii, Cyprinidae). In M. L. Lozano-Vilano, & A. J. Contreras-Balderas (Eds.), *Studies on the North American desert fishes in honor of E.P. (Phil) Pister, conservationist* (pp. 102–124). Monterrey: Universidad Autónoma de Nuevo León.
- Schonhuth, S., Blum, M. J., Lozano-Vilano, L., Neely, D. A., Varela-Romero, A., Perdices, A., et al. (2011). Inter-basin exchange and repeated headwater capture across the Sierra Madre Occidental inferred from the phylogeography of Mexican stonerollers. *Journal of Biogeography*, 38, 1406–1421.
- Schonhuth, S., Lozano-Vilano, L., Perdices, A., Espinosa, H., & Mayden, R. L. (2014). Phylogeny, genetic diversity, and phylogeography of the genus *Codoma* (Teleostei, Cyprinidae). *Zoologica Scripta*, 44, 11–28.
- Schonhuth, S., Perdices, A., Lozano-Vilano, L., García-De León, F. J., Espinosa, H., & Mayden, R. L. (2014). Phylogenetic relationships of North American western chubs of the genus *Gila* (Cyprinidae, Teleostei), with emphasis on southern species. *Molecular Phylogenetics and Evolution*, 70, 210–230.
- Siebert, D. J., & Minckley, W. L. (1986). Two new catostomid fishes (Cypriniformes) from the northern Sierra Madre Occidental of Mexico. *American Museum Novitates*, 2849, 1–17.
- Smith, M. L., & Miller, R. R. (1986). The evolution of the Río Grande Basin as inferred from its fish fauna. In C. H. Hocutt, & E. O. Wiley (Eds.), *The zoogeography of North American freshwater fishes* (pp. 457–485). New York: Wiley-Interscience Publications.
- Smith, G. R. (1992). Phylogeny and biogeography of the Catostomidae, freshwater fishes of North America and Asia. In R. L. Mayden (Ed.), *Systematics, historical ecology, and North American freshwater fishes* (pp. 778–826). Stanford: Stanford University Press.
- Smith, M. L., Dowling, T. E., Gobalet, K. W., Lugaski, T., Shiozawa, D. K., & Evans, R. P. (2002). Biogeography and timing of evolutionary events among Great Basin fishes. In R. Hershler, & D. B. Currey (Eds.), *Great Basin aquatic systems history* (vol. 33) (pp. 175–234). Washington, DC: Smithsonian Contributions to the Earth Sciences.
- Varela-Romero, A., Hendrickson, D. A., Yepiz-Plascencia, G., Brooks, J. E., & Neely, D. A. (2011). Status of the Yaqui Catfish (*Ictalurus pricei*) in the United States and Northwestern Mexico. *The Southwestern Naturalist*, 56, 277–285.