



Revista de Biología Tropical

ISSN: 0034-7744

rbt@cariari.ucr.ac.cr

Universidad de Costa Rica

Costa Rica

Tesfaye, Gashaw; Wolff, Matthias
Stock assessment of fishery target species in Lake Koka, Ethiopia
Revista de Biología Tropical, vol. 63, núm. 3, septiembre, 2015, pp. 755-770
Universidad de Costa Rica
San Pedro de Montes de Oca, Costa Rica

Available in: <http://www.redalyc.org/articulo.oa?id=44939781017>

- How to cite
- Complete issue
- More information about this article
- Journal's homepage in redalyc.org

redalyc.org

Scientific Information System

Network of Scientific Journals from Latin America, the Caribbean, Spain and Portugal

Non-profit academic project, developed under the open access initiative

Stock assessment of fishery target species in Lake Koka, Ethiopia

Gashaw Tesfaye^{1*, 2} & Matthias Wolff¹

1. Leibniz Zentrum für Marine Tropenökologie (ZMT), Fahrenheitstraße 6, 28359 Bremen, Germany; gte@zmt-bremen.de; matthias.wolff@zmt-bremen.de
2. Ethiopian Institute of Agricultural Research-National Fisheries and Aquatic Life Research Center, P.O. Box 64, Sebeta, Ethiopia; gashawt@gmail.com

* Correspondence

Received 28-X-2014. Corrected 15-III-2015. Accepted 13-IV-2015.

Abstract: Effective management is essential for small-scale fisheries to continue providing food and livelihoods for households, particularly in developing countries where other options are often limited. Studies on the population dynamics and stock assessment on fishery target species are thus imperative to sustain their fisheries and the benefits for the society. In Lake Koka (Ethiopia), very little is known about the vital population parameters and exploitation status of the fishery target species: tilapia *Oreochromis niloticus*, common carp *Cyprinus carpio* and catfish *Clarias gariepinus*. Our study, therefore, aimed at determining the vital population parameters and assessing the status of these target species in Lake Koka using length frequency data collected quarterly from commercial catches from 2007-2012. A total of 20 097 fish specimens (distributed as 7 933 tilapia, 6 025 catfish and 6 139 common carp) were measured for the analysis. Von Bertalanffy growth parameters and their confidence intervals were determined from modal progression analysis using ELEFAN I and applying the jackknife technique. Mortality parameters were determined from length-converted catch curves and empirical models. The exploitation status of these target species were then assessed by computing exploitation rates (E) from mortality parameters as well as from size indicators i.e., assessing the size distribution of fish catches relative to the size at maturity (L_m), the size that provides maximum cohort biomass (L_{opt}) and the abundance of mega-spawners. The mean value of growth parameters L_∞ , K and the growth performance index ϕ' were 44.5 cm, 0.41/year and 2.90 for *O. niloticus*, 74.1 cm, 0.28/year and 3.19 for *C. carpio* and 121.9 cm, 0.16/year and 3.36 for *C. gariepinus*, respectively. The 95 % confidence intervals of the estimates were also computed. Total mortality (Z) estimates were 1.47, 0.83 and 0.72/year for *O. niloticus*, *C. carpio* and *C. gariepinus*, respectively. Our study suggest that *O. niloticus* is in a healthy state, while *C. gariepinus* show signs of growth overfishing (when both exploitation rate (E) and size indicators were considered). In case of *C. carpio*, the low exploitation rate encountered would point to underfishing, while the size indicators of the catches would suggest that too small fish are harvested leading to growth overfishing. We concluded that fisheries production in Lake Koka could be enhanced by increasing E toward optimum level of exploitation (E_{opt}) for the underexploited *C. carpio* and by increasing the size at first capture (L_c) toward the L_{opt} range for all target species. Rev. Biol. Trop. 63 (3): 755-770. Epub 2015 September 01.

Key words: growth, mortality, exploitation rate, optimum length (L_{opt}), mega-spawners, size indicators.

Small-scale fisheries contribute a high percentage to the global fisheries and are a means of livelihoods for several million people, particularly in developing countries where other livelihood options are often very limited. However, over the past decades, several fish stocks have been showing a declining trend due to overfishing (Pauly, Christensen,

Dalsgaard, Froese, & Torres, 1998; Froese, 2004; Winker, Weyl, Booth, & Ellender, 2011; Hicks & McClanahan, 2012), and their proper assessment and management seem imperative to sustain their fisheries and the benefits for the society. Information on the ecology and life histories of the fish stocks are prerequisites for fisheries management. Stock assessment



comprises the study on the population dynamics controlled by growth, recruitment, natural and fishing mortalities (King, 1995). Fish stocks decrease in size when the gains from spawning, recruitment and individual growth are smaller than the losses from natural and fisheries mortality. The main cause for natural mortality is generally predation, but other factors such as starvation, diseases, dramatic environmental fluctuations like oxygen depletion, increase/decrease water temperature and other water quality parameters may also be influential. Adverse environmental conditions could result from deforestation, pollution (both point and non-point source), eutrophication and other land-based anthropogenic activities. Fisheries always induce an additional mortality to the stock, which needs to be balanced through an increase in biomass production by the stock, if the fishery is to be sustained. To understand the species response to ecosystem manipulation or perturbations, to analyze economic impacts of changes in their population sizes over time and to carry out population viability and Maximum Sustainable Yield (MSY) analysis, it is necessary to study the population dynamics of the stocks under the current exploitation regime.

Lake Koka fisheries have been developing over the past decades and the lake was part of the eight major lakes considered by the lake fisheries development project (LFDP) in 1990s (LFDP, 1997). Koka is among the most important lakes for Ethiopian small scale fisheries in general and riparian societies in particular (Tefaye & Wolff, 2014). At present it provides about 625t of fish annually. The commercially important species include tilapia *Oreochromis niloticus* (Linnaeus, 1758), catfish *Clarias gariepinus* (Burchell, 1922), common carp *Cyprinus carpio* (Linnaeus, 1758), and barbs *Labeobarbus intermedius* (Rüppell, 1835) (LFDP, 1997). Of these, *O. niloticus*, *C. gariepinus* and *C. carpio* comprise more than 95 % of the annual catch. Our study, therefore, focused on these three target species assuming that the fishing pressure might be high and regulative measures might be needed. The biology and ecology of these species have been studied

in different water bodies in Ethiopia (Admassu, 1996; Tadesse, 1997; Wudneh, 1998; Tadesse, 1999; Dadebo, 2000; Teferi, Admassu, & Mengistou, 2004; Tesfaye & Tadesse, 2008). The growth of these species has also been reported in other areas, but very little is known about their vital population parameters and exploitation status in Lake Koka. Only for *O. niloticus*, LFDP (1997) and Tesfaye (2006) reported preliminary estimates of vital population parameters in Lake Koka. In the study here presented we aimed at determining the growth and mortality parameters and the stock status of the three fishery target species in Lake Koka following two complementary approaches: (1) estimating mortality parameters (Z and M) from catch curves and empirical formulas, respectively, to calculate the exploitation rate (E) and comparing its value with a proposed index by Gulland (1971), and (2) using size indicators i.e., assessing the size distribution of the fish catches relative to the size at maturity (L_m), and relative to the size that provides maximum cohort biomass and hence, maximum yield per recruit (L_{opt}) and to the abundance of mega-spawners. The results of the study are expected to serve as inputs to fisheries models and management decisions aimed at the determination of the optimum level of exploitation of the target resources.

MATERIALS AND METHODS

Study area: The tropical Lake Koka (also called Lake Galilea in the past) is located in the Ethiopian Rift Valley (08°23'22" N - 39°05'15" E) at an altitude of 1590 m.a.s.l., about 90 km Southeast of Addis Ababa. It has a surface area of about 255 km² with a maximum and mean depth of 14 m and 9 m, respectively (Vanden, Bossche, & Bernacsek, 1991; LFDP, 1997). Water in- and outflow is mainly provided by the Awash River. In addition, the Mojo River may also generate inflow during the rainy season. The lake has a large floodplain area in its Western side. The climate is characterized by a four-months dry season (November-February) and an eight-months rainy season

(March-October) (Gamachu, 1977). The total annual rainfall varies from 600-800 mm in the Rift Valley area (Ayenew, 2004) and the mean annual temperature ranges from 20-26 °C (an average of about 23 °C) (Degefu, Teshome, Tesfaye, Tefera, & Lakew, 2011). The pH of the water ranges from 8-9 and conductivity from 200-393 $\mu\text{S}/\text{cm}$ (Mesfin, Tudorancea, & Baxter, 1988; Degefu et al., 2011). The Secchi depth of Lake Koka is low and on average ranges from 12-28 cm due to suspended silt coming in by the River Awash (Kebede, Zinabu, & Ahlgren, 1994; Degefu et al., 2011). Sediments are very fine, easily washable through a 200 μm mesh net, and the organic content is rather high when compared to other tropical African lakes described by Mesfin et al. (1988). Its chlorophyll *a* content is changing over time and reported figures include: 13.5 $\mu\text{g}/\text{L}$ (Kebede et al., 1994), 22.4 $\mu\text{g}/\text{L}$ (Mesfin et al., 1988) and 214.1 $\mu\text{g}/\text{L}$ (Degefu et al., 2011). Other chemical and limnological features were also studied by (Mesfin et al., 1988; Kebede et al., 1994; Tudorancea, Zinabu, & Dadebo, 1999; Zinabu, Kebede, & Desta, 2002).

Sampling and data collection: Length frequency data was taken from the commercial catches on a quarterly basis from 2007-2012 at the landing sites (Denbela and Tannery, Algaworash and Bridge, and Tsebel and Gefersa) and a total of 20097 fish specimens (distributed as 7933 tilapia, 6025 catfish and 6139 common carp) were measured. The common fishing gears used in Lake Koka fishery include beach seines with 60 mm mesh size codend, gillnets having 100 mm mesh size, and long-lines with hook sizes ranging from 4/0-6/0 but beach seine catches contribute about 60 % to the annual landings. The total lengths (TL) of tilapia and catfish and the fork lengths (FL) of carp were measured to the nearest 0.1 cm and thereafter, these length type measurements were used in all subsequent analysis for the respective species.

Growth determination: Length frequency data obtained from the catches were used to

determine the growth parameters. The growth of the fish species considered in the study was assumed to follow the von Bertalanffy growth function (VBGF):

$$L_t = L_\infty * (1 - e^{-K(t-t_o)}) \quad (1)$$

where, L_t is the length at a particular given time, L_∞ is the asymptotic length of fish in cm, K is the rate at which length approaches the asymptote, also called growth curvature, t is time (age) and t_o is the theoretical age at which fish would have had at zero length, if fishes had grown according to VBGF. An estimate of t_o was calculated using Pauly (1979) empirical equation:

$$\log(-t_o) = -0.3922 - 0.275 * \log L_\infty - 1.038 * \log K \quad (2)$$

VBGF Parameters (L_∞ and K) were determined using the FiSAT II software (FAO-ICLARM Stock Assessment Tool II), a computer program package developed mainly for the analysis of length frequency data, but which also enables related size-at-age and catch-at-age analysis, as well as gear selection and other analysis (Gayaniilo, Sparre, & Pauly, 2005). ELEFAN I, a routine in FiSAT II, was used to identify the growth curve that “best” fits a set of length-frequency data, using the value of the goodness of fit index (Rn) as a criterion (Gayaniilo et al., 2005). L_∞ and K values with the highest Rn values were then considered as “best” estimates.

Since ELEFAN does not provide confidence intervals for the growth parameter estimates, we employed the jackknife technique to drive a set of different L_∞ and K estimates which then allowed us to calculate the mean and 95 % confidence interval (CI) of the estimates. The jackknife or “leave one out” technique, first developed by Quenouille (1956) and further expanded by Tukey (1958, 1986), has been used as a cross-validation technique to estimate the bias of an estimator (population parameter). It is an iterative process whereby a sample is omitted sequentially with replacement and generates a group of n samples with

n – 1 data set and the estimate from this n – 1 sample called a partial estimate or also called a jackknife replication (Abdi & Williams, 2010). This technique has been used to quantify the effect of input data variations in growth parameter estimates (Levi, Andreoli, & Cannizzaro, 1987; Leonce-Valencia & Defeo, 1997; Flores, 2011; Arellano-Torres, Hernández Montaña, & Meléndez Galicia, 2013). Similarly, our growth analysis was performed using the length frequency data collected from 2010-2012 on a quarterly basis (but one quarter was missed in 2010), and thus, a total of 11 combinations of growth parameters (L_{∞} and K) were obtained from each n -1 independent samples using the ELEFAN I – method. The coefficient of variation (CV) and the percent error (PE) were also calculated as a measure of precision. PE was computed according to Leonce-Valencia and Defeo (1997):

$$PE = ((St - St_j) / St_j) * 100 \quad (3)$$

where St is the growth parameter estimate (L_{∞} and K) using the whole data set (without jackknife), and St_j is the mean parameter estimate obtained from the jackknife “pseudo - values”. PE is optimum when it equal 0 ($St = St_j$). From those parameters, we also calculated the Phi prime (ϕ') index (Munro & Pauly, 1983) used

to compare the growth performance of fish in length, which is defined as:

$$\phi' = \log K + 2 * \log L_{\infty} \quad (4)$$

where, K and L_{∞} are growth parameters from VBGF. The length at optimum cohort biomass or yield per recruit (L_{opt}) was calculated by Beverton (1992) as:

$$L_{opt} = L_{\infty} * (3 / (3 + M / K)) \quad (5)$$

where, L_{∞} and K are as defined above and M is the natural mortality coefficient.

We used our L_m (Length at first maturity) estimates (Tesfaye & Wolff, unpublished) and computed the numeric percentage of specimens in the catches larger than L_m . The percentage of fish between L_m and $L_{opt} + 10\%$ larger sizes referred as the L_{opt} range was then also calculated as well as the percentage of fish beyond this L_{opt} range, referred to as mega - spawners (modified from Froese, 2004) (Fig. 1). These values were used as size indicators to evaluate the status of the targeted stocks.

Mortality and exploitation rates: Total instantaneous mortality (Z) was computed from a linearized length - converted catch - curve as described by Pauly (1984) and Gayanilo et al. (2005):

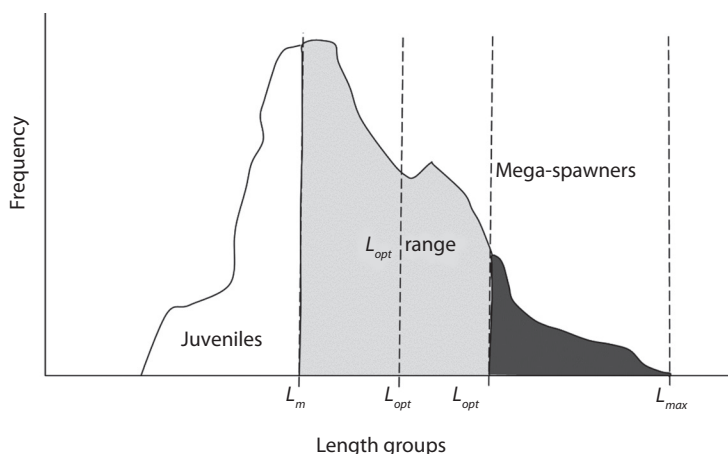


Fig. 1. Relative position of size indicators in a given fish catch. Light gray color refers the L_{opt} range; dark gray color refers the Mega-spawners.

$$\ln(N_i/\Delta t) = a + b * t_i \quad (6)$$

where N_i is the number of fish in length class i , Δt is the time needed for the fish to grow through length class i , t_i is the age (or the relative age) corresponding to the mid length of class i , and b , with sign changed, is an estimate of Z .

$$\Delta t = -(1/K) * \ln((L_\infty - L_{i+1}) / (L_\infty - L_i)) \quad (7)$$

$$\text{and } t_i = -(1/K) * \ln(1 - (L_i/L_\infty)) + t_o \quad (8)$$

where, L_i is the midpoint of length class i .

This approach assumes that Z is constant beyond some reference age, and thus we only considered individuals that are fully recruited or vulnerable to the fishing gear. The age of individuals fully recruited to the fishery is given by the point when the catch curve begins to decline at a steady rate and the corresponding length refers to the length at first capture L_c (Pauly, 1984). Z was therefore calculated by the regression line on individuals beyond this point (Pauly, 1984; Hicks & McClanahan, 2012).

The natural mortality coefficient (M) was estimated by two different empirical models proposed by Pauly (1980) and Rikhter and Efanov (1976) and used separately for further analysis. Pauly's formula relates M to the VBGF parameters and the mean annual water temperature and the formula is given as follows:

$$\log M = -0.0066 - 0.279 \log L_\infty + 0.6543 \log K + 0.463T \quad (9)$$

where, L_∞ and K are VBGF parameters and T is mean water temperature in °C.

Rikhter and Efanov (1976) relate M to the age at which 50 % of the population matures (t_m); a value corresponding to L_m and their equation is given as follows:

$$M = 1.521/t_m^{0.72} - 0.155 \quad (10)$$

The L_m values were converted into t_m using equation 8. Since $Z = M + F$, fisheries mortality (F) was calculated by subtracting M (obtained

using equation 9 and 10) from Z . The fisheries exploitation rate (E) was then calculated using each F estimates as ratio of F to Z (Gulland, 1971). E close to 0.5 is considered to describe an optimal level of exploitation, whereas $E > 0.5$ refers to a state of over exploitation.

RESULTS

The L_∞ and K estimated for the whole data set and for the jackknife subset of data were slightly different. As seen in figure 2, the L_∞ estimate for *O. niloticus*, *C. carpio* and *C. gariepinus* varied from 42.6-47.1 cm (2.9 %), 70.6-77.2 cm (2.6 %) and 118.2-126.1 cm (2.0 %), while K ranged from 0.32-0.41/year (11.3 %), 0.25-0.34/year (10.7 %) and 0.12-0.18/year (13.9 %), respectively. For all species, both parameters were significantly correlated (*O. niloticus*: Pearson, $r = -0.983$, $P < 0.05$; *C. gariepinus*: Pearson, $r = -0.898$, $P < 0.05$ and *C. carpio*: Pearson, $r = -0.686$, $P < 0.05$). Table 1 shows the mean and 95 % CI of the estimated growth parameters, precision and goodness of fit estimates. Previously reported estimates are also presented in Table 2 for the purpose of comparison.

The best fitted growth curves using mean growth parameters as derived from the jackknife method are shown in figure 3. Figure 4 shows the size spectrum for the three target fish species analyzed. The minimum and maximum lengths were 18 cm and 42 cm for *O. niloticus*, 25 cm and 121 cm for *C. gariepinus*, and 19 cm and 71 cm for *C. carpio*, respectively (Fig. 4 left). L_c , which is the lower limit of a size class completely selected and / or fully recruited (starting point of the catch curve, Fig. 5) and other life history characteristics are given in Table 3. The length-converted catch curves used to estimate the instantaneous total mortality rate are shown in figure 5, the estimates for the rates of natural and fishing mortality and the derived values of the exploitation rates of these three species are summarized in Table 4.

TABLE 1
Growth parameters of *O. niloticus*, *C. carpio* and *C. gariepinus* from Lake Koka, estimated without (*St*) and with jackknife (*Y*); precision and ELEFAN goodness of fit estimates are also presented

Parameters		<i>O. niloticus</i>	<i>C. carpio</i>	<i>C. gariepinus</i>
L_{∞}	<i>St</i>	44.3	74.2	123.2
	<i>Y</i>	44.5	74.1	121.9
	95% <i>CI</i>	43.7 - 45.2	73.0 - 75.3	120.5 - 123.4
	<i>CV</i>	2.9	2.6	2.0
	<i>PE</i>	0.2	0.1	1.0
<i>K</i>	<i>St</i>	0.41	0.28	0.16
	<i>Y</i>	0.41	0.28	0.16
	95% <i>CI</i>	0.38 - 0.43	0.26 - 0.30	0.14 - 0.17
	<i>CV</i>	11.3	10.7	13.9
	<i>PE</i>	0.0	0.0	0.0
t_o		-0.36	-0.46	-0.72
	<i>Rn</i>	0.275	0.170	0.219
ϕ'		2.90	3.19	3.36

L_{∞} = asymptotic length (cm), *K* = instantaneous growth rate or growth curvature (year⁻¹), t_o = time (age) at length zero, ϕ' = growth performance index, *CV* = coefficient of variation (%), *PE* = percent error (%), *Rn* = ELEFAN goodness of fit index.

TABLE 2
Literature information on von Bertalanffy growth parameters and the rate of natural mortality for *O. niloticus*, *C. gariepinus* and *C. carpio* from different locations

Species	L_{∞}	<i>K</i>	ϕ'	<i>M</i>	Location	References
<i>O. niloticus</i>	29.7	0.44	2.59	1.03	L. Turkana, Kenya	Moreau, Palomares, Torres, & Pauly (1995)
<i>O. niloticus</i>	33.8	0.40	2.66	0.86	L. Awassa, Ethiopia	LFDP (1997)
<i>O. niloticus</i>	28.1	0.64	2.76	1.21	L. Ziway, Ethiopia	Tesfaye (2006)
<i>O. niloticus</i>	35.7	0.50	2.80	0.97	L. Tana, Ethiopia	Wudneh (1998)
<i>O. niloticus</i>	32.1	0.56	2.71	1.09	L. Langano, Ethiopia	Tesfaye (2006)
<i>O. niloticus</i>	45.4	0.36	2.87	0.74	L. Koka, Ethiopia	Tesfaye (2006)
<i>O. niloticus</i>	44.5	0.41	2.90	0.82 ^a	L. Koka, Ethiopia	present study
<i>O. niloticus</i>	52.0	0.30	2.91	-	L. Kainji, Nigeria	du-Feu & Abiodun (1999)
<i>O. niloticus</i>	55.6	0.39	3.08	0.80	L. Kaptai, Bangladesh	Ahmed et al. (2003)
<i>C. gariepinus</i>	90.0	0.20	3.21	0.41	Lake Tana, Ethiopia	Wudneh (1998)
<i>C. gariepinus</i>	113.0	0.11	3.13	0.15	Lake Malawi, Malawi	FishBase
<i>C. gariepinus</i>	123.0	0.13	3.29	0.29	Sand River dam, Swaziland	Clay (1984)
<i>C. gariepinus</i>	124.0	0.06	2.96	0.19	L. Kariba, Zimbabwe	Clay (1984)
<i>C. gariepinus</i>	121.9	0.16	3.36	0.33 ^a	L. Koka, Ethiopia	present study
<i>C. carpio</i>	66.2	0.35	3.19	0.60	L. Gariep, Orange River, South Africa	Winker et al. (2011)
<i>C. carpio</i>	67.5	0.21	2.98	-	Waikato region, New Zealand	Tempero, Ling, Hicks, & Osborne (2006)
<i>C. carpio</i>	85.1	0.17	3.10	0.26	Dongjiang River, China	Fuhang (1988)
<i>C. carpio</i>	67.9	0.28	3.11	-	41 populations, USA	Jackson et al. (2008)
<i>C. carpio</i>	74.1	0.28	3.19	0.55 ^a	L. Koka, Ethiopia	present study

^a*M* calculated using Pauly (1980).

L_{∞} = asymptotic length (cm), *K* = growth curvature parameter (year⁻¹), ϕ' = growth performance index in length (cm/year) and *M* = natural mortality coefficient (year⁻¹).

DISCUSSION

As has been pointed out by several authors, it is possible to determine daily growths in tropical fishes with modern aging techniques, however, growth determination through hard structures is often still difficult in tropical countries as it is time consuming, costly and the research equipment is often not available (Pauly, 1984; Sparre & Venema, 1998; Gayanilo et al., 2005). In Ethiopia, this is also exacerbated by an unwillingness of fishers to allow dissecting their fish for hard part extraction as they often sale whole fish. Thus, length frequency analysis remains the most viable and still most often used method for growth studies in tropical fish stock assessment. Leonce-Valencia and Defeo (1997) also suggested based on their comparative studies that length-based methods can also provide as accurate growth estimates as the time consuming direct methods. Once the growth parameters in length are obtained, it is possible to convert length into age using the inverse VBGF and into weight using the length - weight relationship. We thus, used length frequency data of the fish catches for determination of growth parameters.

The jackknife technique allowed us to quantify the effect of input data variations and uncertainty in growth parameter estimates. The two precision measures consistently showed low values of PE and CV for both L_{∞} and K estimates for all the species considered. For a tilapia sister species in Mexico (*Oreochromis auereus*), Arellano - Torres et al. (2013) reported a slightly wider range of L_{∞} and K estimates 33.7-45 cm and 0.26-0.60/year, respectively using a similar jackknife analysis. However, in both studies the CV and PE of L_{∞} (2.2 %; 0.7 %) and K (8.6 %; 14.7 %) estimates obtained using with and without jackknife technique were very similar. The inverse relationship between L_{∞} and K values also holds true in this study.

The growth parameters L_{∞} and K were different among the three species studied in Lake Koka but comparable to other studies. The rate at which fish size approaches L_{∞} is fastest in *O.*

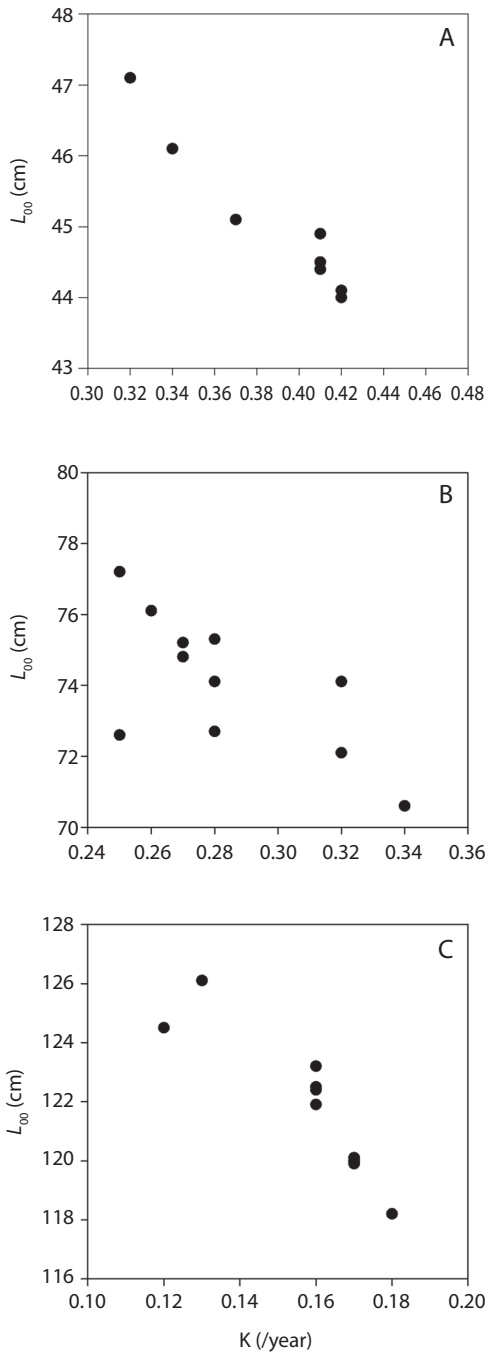


Fig. 2. Relationship between jackknife estimates of L_{∞} and K for A) *O. niloticus*, B) *C. carpio* and C) *C. gariepinus* from Lake Koka.

TABLE 3
Life history characteristics of fishery target species in Lake Koka

Species	N	Lc (cm)	L _m (cm) ^a	> L _m (%) ^b	L _{opt} (cm) ^b	L _{opt} range (%) ^b	Mega-spawners ^b
<i>O. niloticus</i>	7 933	26	24.6	81	26.8	50	22
<i>C. carpio</i>	6 025	26	30.6	50	44.8	43	7
<i>C. gariepinus</i>	6 139	46	53.4	32	72.0	28	4

^a Tesfaye & Wolff (unpublished).

^b Mean values of 6 years (2007-2012).

N = sample size, Lc = length at first capture, L_m = length at first maturity, and L_{opt} = optimum length.

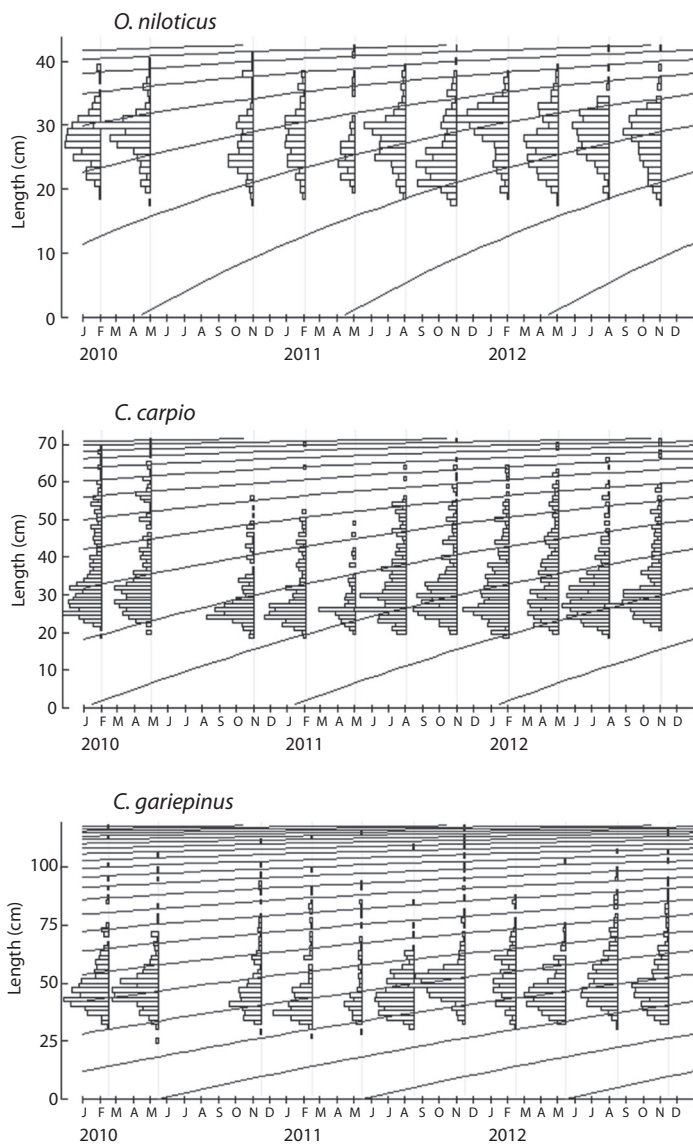


Fig. 3. von Bertalanffy growth curves of fishery target species in Lake Koka derived from the ELEFAN analysis with the mean of jackknife estimates.

niloticus followed by *C. carpio* than *C. gariepinus*. It is also widely accepted that maximum size and the rate at which it is approached are highly interlinked in fishes with the result that most small fishes have fast growth, early maturation and short lives (r - selection traits), while most large fish species have slow growth, late maturation and long lives (K - selection

traits) (Gulland, 1971; Ricker, 1975). Previous studies indicated that growth parameters could also differ for stocks within the same species depending on environmental conditions (Lowe-McConnell, 1982; Sparre & Venema, 1998). Intra - specific comparison of non - linear growth functions by their parameters L_{∞} and K were shown to be less meaningful (since

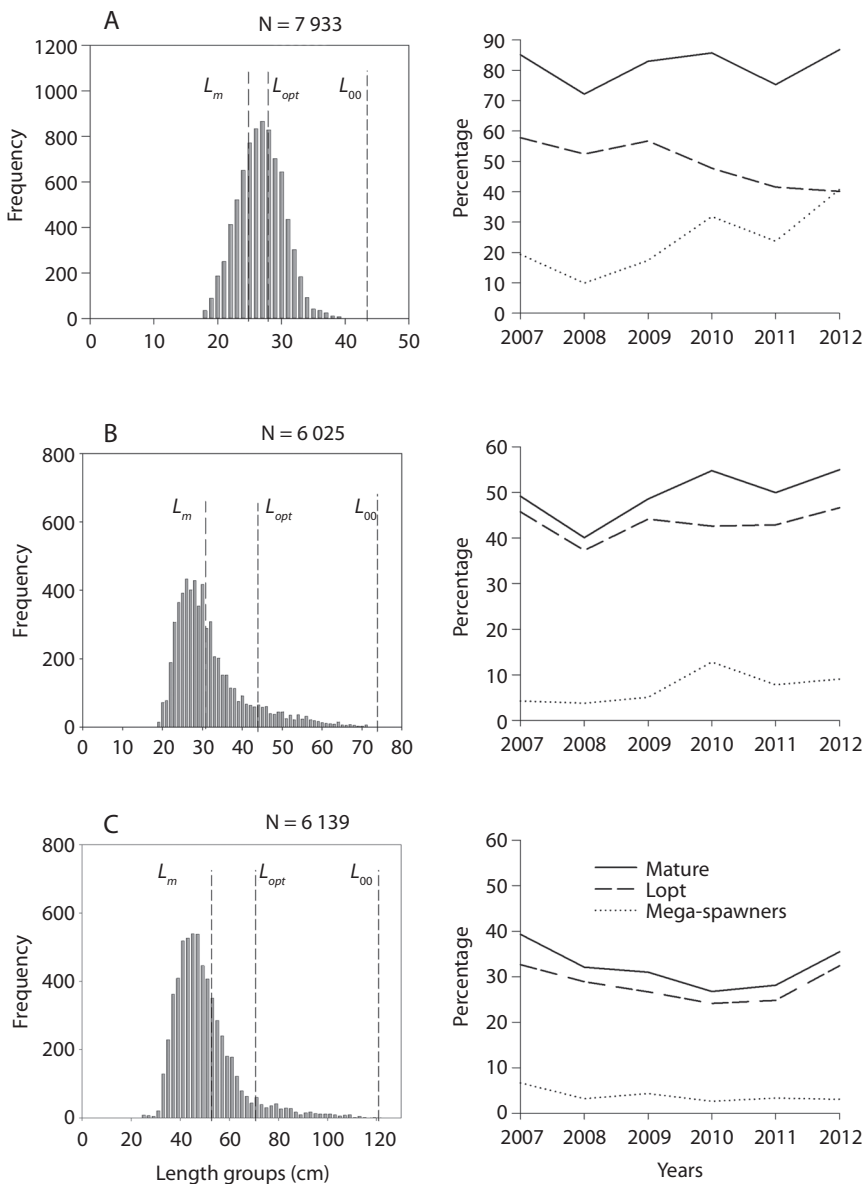


Fig. 4. Size spectrum (left) and time series of size indicators (right) for A) *O. niloticus*, B) *C. carpio* and C) *C. gariepinus* in Lake Koka.



TABLE 4
Mortality and exploitation rates of the fishery target species in Lake Koka

Species	Cases ^a	Z	M		F		E		Status
			M ₁	M ₂	F ₁	F ₂	E ₁	E ₂	
<i>O. niloticus</i>	1	1.47	0.82	0.78	0.65	0.69	0.45	0.47	~ optimum
	2	1.48	0.77	0.75	0.71	0.73	0.48	0.50	
	3	1.38	0.85	0.79	0.53	0.59	0.39	0.42	
<i>C. carpio</i>	1	0.83	0.55	0.80	0.28	0.03	0.34	0.03	underexploited
	2	0.81	0.52	0.77	0.29	0.04	0.36	0.05	
	3	0.85	0.58	0.84	0.27	0.01	0.32	0.02	
<i>C. gariepinus</i>	1	0.72	0.33	0.45	0.39	0.27	0.54	0.38	Slightly overfished/ underexploited ^b
	2	0.65	0.30	0.40	0.35	0.25	0.53	0.38	
	3	0.74	0.35	0.47	0.39	0.27	0.53	0.37	

^a Case 1 refers estimates computed using the mean value of L_{∞} & K values, case 2 refers estimates computed using upper 95% CI of L_{∞} & lower K and case 3 using lower 95% CI of L_{∞} & upper K .

^b E_1 for *C. gariepinus* indicated state of overfishing, but E_2 showed state of under exploitation.

Abbreviations: Z = total mortality (year⁻¹), M = Natural mortality (year⁻¹); M_1 = Natural mortality obtained using equ. 9; M_2 = Natural mortality obtained using equ. 10; F = Fishing mortality (year⁻¹); $F_1 = Z - M_1$; $F_2 = Z - M_2$; E = Exploitation rate; $E_1 = F_1/Z$; $E_2 = F_2/Z$.

they may vary even for the same species from different areas), whereas the use of the growth performance index ϕ' was shown better suited for comparing growth intra- and interspecifically since it integrates over both descriptors of the growth curve (Munro & Pauly, 1983; Pauly & Munro, 1984).

Our estimate of ϕ' for *O. niloticus* in Lake Koka was higher than that reported by LFD (1997) but similar to the one reported by Tesfaye (2006). The calculated mean \pm standard deviation of ϕ' –values for 36 *O. niloticus*, 30 *C. carpio* and 27 *C. gariepinus* populations reported in FishBase (excluding estimates from aquaculture facilities) (www.fishbase.org “Accessed 15 July 2014”) are 2.68 ± 0.27 , 3.07 ± 0.23 and 3.29 ± 0.20 , respectively. Thus, our ϕ' estimate obtained for *O. niloticus*, *C. carpio* and *C. gariepinus* are well within these ranges and thus comparable with other studies. This suggests that our growth parameter estimates are reliable. Moreau, Bambino and Pauly (1986) compared the growth performance of 100 tilapia populations with different kind of growth performance indices and found that ϕ' is the best index for performance comparison. They found the best growth performance of *O.*

niloticus in Lake Kainji, Nigeria and the worst in *O. mossambicus* from Lake Sibaya, South Africa. Apparently, the *O. niloticus* population from Lake Koka tends to grow better than populations in other Ethiopian lakes and Lake Turkana, and resembles that of the Lake Kainji, Nigeria population and the one with the slightly smaller index in Lake Kaptai, Bangladesh. Comparative studies in pond experiments on the growth performance of *O. niloticus* from Lake Koka and other Ethiopian lakes (Ziway, Awassa and Hora) also confirmed the better growth of *O. niloticus* from Lake Koka compared to other populations investigated (Workagegn & Gjoen, 2012), which further confirms the reliability of our growth parameters estimate. Reliable estimates of ϕ' from wild stocks (as in the case here presented) could thus be used for the selection of species or populations for transfers and introductions (Moreau et al., 1986).

C. gariepinus from Lake Koka seems to reach larger sizes than in Lake Tana (L_{∞} is higher by more than 30 cm), but both populations showed similar performance indices. The estimated growth parameters for *C. carpio* are also very similar to the estimates reported

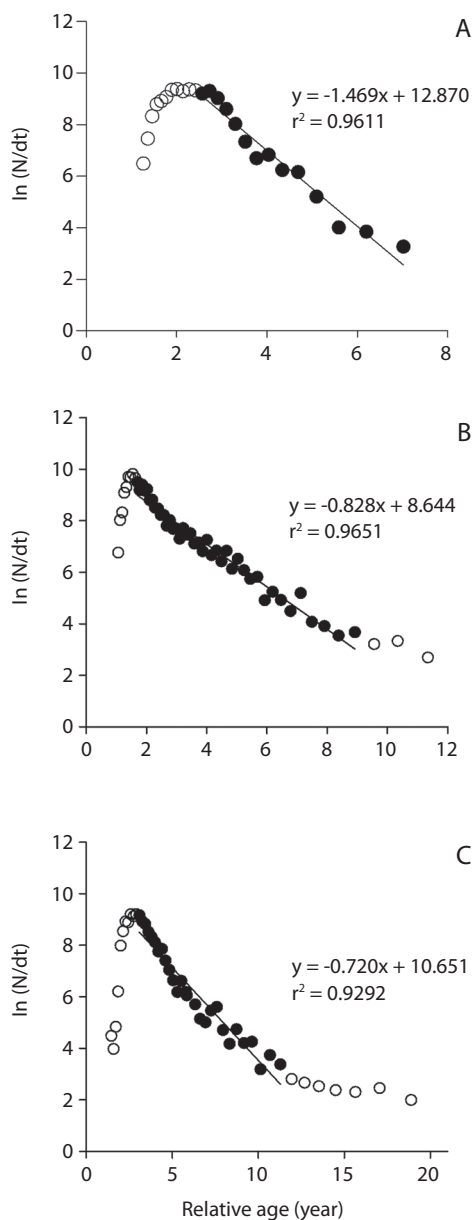


Fig. 5. Length-converted catch curves for A) *O. niloticus*, B) *C. carpio* and C) *C. gariepinus* in Lake Koka. Open circles (unused data points) represent individuals not fully recruited or juveniles (left side of the curves) & big adults not fully vulnerable by the fishing gear (right side of the curves) (see discussion).

for 41 populations in USA (Jackson, Quist, & Larscheid, 2008).

Growth and mortality rates are very much interrelated. Growth affects the fish's

vulnerability to both predation and fishing and it largely determines the food requirements of each individual fish (Allen & Hightower, 2010). And it is the growth of individual fish that provides the catch and prey potential for the fishery and the natural predators (Pauly, 1984). Pauly's empirical formula has been intensively used for the determination of natural losses (M) (Sparre & Venema, 1998; Ahmed, Amin, Haldar, & Dewan, 2003; Gayanilo et al., 2005). It assumes that small and fast growing fishes have higher natural losses (more predators), and that natural mortality also increases with environmental temperature (Pauly, 1980). Correspondingly, our smallest and fastest growing fish (*O. niloticus*) showed a higher M value than the other two larger species. In a parallel study, we observed that specimens of *O. niloticus* as well as their eggs and/or scales are commonly found in the gut of *C. gariepinus* in Lake Koka (Tesfaye & Wolff, unpublished). Similarly, previous studies confirmed *O. niloticus* to be an important prey for *C. gariepinus* in different water bodies (Dadebo, 2000; Dadebo, Aemro, & Tekle-Giorgis, 2014). For this reason, *C. gariepinus* is used in many countries as predator in tilapia-catfish poly-culture to control unwanted tilapia fries (De Graaf & Jansen, 1996; Solomon & Boro, 2010; Ibrahim & Naggari, 2010). Therefore, as predation is known to be the main causes of M in wild fish stocks, the high estimate of M for *O. niloticus* and conversely, lowest M for *C. gariepinus* is thus expected. *C. carpio* as fast growing fish also presents a high M value in Lake Koka and our estimate is comparable to the findings of other authors (Winker et al., 2011).

We estimated Z from length converted catch-curves but did not include for the analysis those large specimens, whose lengths are close to L_{∞} following the reasoning of Pauly (1984), Hicks & McClanahan (2012) and Gayanilo et al. (2005). According to them their inclusion would generate unrealistically high ages and low Z estimates. Moreover, the catch curve for *C. gariepinus* does not seem to fit well with its inherent assumption of constant Z for sizes beyond L_c . The slope of the curve

drastically drops toward the larger/older fish (age > 11 years) suggesting that those fish sizes are significantly less affected by the fishing gear. However, these larger fish correspond to the group of Mega-spawners as their size is above 10 % of L_{opt} . They comprise < 5 % of the catch and are assumed to mostly suffer from natural mortality causes. We thus, choose only those data points that correspond to the other 95 % of the catch and that provided a linear fit to the catch curve and calculated the corresponding Z value, which was then used for our subsequent analysis. For *C. gariepinus* and *O. niloticus*, the exploitation rate (E) resulted slightly above or below the 0.5 (depending on the M -value used), a rate considered as optimum level of exploitation (E_{opt}) (Gulland, 1971), while it was consistently significantly below the 0.5 value for *C. carpio*.

When we look at the size indicators for the state of the fishery, the catch size distribution showed that more than two-thirds of the *C. gariepinus* catch lies below the size of L_m and only 28 % of the catch lies within the L_{opt} range suggesting that growth overfishing is occurring and the very low percentage of mega-spawners would also suggests recruitment overfishing, which is in agreement with the exploitation rate estimate based on Pauly's M estimate. However, although the percentage of mega-spawners in the stock is low, recruitment overfishing for *C. gariepinus* in Lake Koka is unlikely to occur as the catch curve clearly showed low fishing pressure on the mega-spawners. Hence, large specimens are rarely caught and their percentage has remained nearly constant over the years, which would agree with the exploitation rate estimate based on Rikhter and Evanov's formula to estimate M . The possible explanation of a lower F value for the larger sizes could be related to the fishing ground and fishing gears used in Lake Koka. The Beach seine, which contributes about 60 % of the catch annually, is commonly deployed in the littoral zone (an area close to the shoreline of the lake), where juveniles and young adult fish forage and are principally found, whereas large adults prefer deeper areas. Ontogenetic habitat

shifts are well known in most exploited fish stocks. A study on the bathospatial distribution of fishes in Lake Victoria showed that, while specimens of *C. gariepinus* were found in all depths ranging from 0 to 80 m (Kudhongania & Cordone, 1974; Witte & de Winter, 1995), adult fishes were found to prefer deepwater while the juveniles stay mainly in littoral areas (Goudswaard & Witte, 1997). A similar study in Lake Tana revealed that juveniles and smaller *C. gariepinus* were confined to the vegetated littoral zone while larger adults were found mainly in deeper areas (Wudneh, 1998). Furthermore, many studies also suggested the existence of ontogenetic migration between different habitats (e.g. from sea grass beds to deep reefs or from littoral to open/pelagic and deeper areas) during their life cycle and different habitats or landscapes could result in different fish assemblages (Dorenbosch, Grol, Nagelkerken, & Velde, 2006; Kimirei, Nagelkerken, Griffioen, Wagner, & Mgaya, 2011; Hicks & McClanahan, 2012). The other two gears (gillnets & longline) used in Lake Koka could be used in deeper areas and can catch larger specimens if large mesh and hook sizes were used. However, their commonly used mesh and hook sizes also select against very large sizes unlike the beach seine, which selects all sizes classes beyond L_c along the seining area. We, therefore conclude that growth overfishing is the main problem of *C. gariepinus* stock in Lake Koka.

The E - value computed for *C. carpio* is the lowest (<0.5) compared to the other species with both M values considered, indicating that the *C. carpio* stock in Lake Koka is underexploited. However, similar to *C. gariepinus*, the catch size distribution showed that only 50 % of the catch falls above the L_m and only 43 % lies within the L_{opt} range suggesting that growth overfishing may be occurring. The percentage of mega-spawners showed an increasing trend and arrives at levels > 10 % as of 2010, which suggests no recruitment overfishing, which is in agreement with the estimates for the exploitation rate. In addition, *C. carpio* like *C. gariepinus* is a bottom dweller and hence, the larger adults seem not to be much affected by

the fishery with the same explanation given above for *C. gariepinus*. In fact, according to the index proposed by the American Fisheries Society (AFS), the estimated K values and its fecundity suggests that *C. carpio* is a highly resilient and productive fish (<http://www.fishbase.org/download/keyfacts.zip> “Accessed 20 August 2014”).

Although the Z value for *O. niloticus* is higher than for the other two species, E computed using both M values is near 0.5, suggesting no overfishing. The catch size composition also showed that more than 80 % of the catch comprises sizes above L_m and about 50 % lies in the L_{opt} range and mega-spawners comprise more than 20 %, suggesting both recruitment and growth overfishing are not occurring. The similarity of L_c and L_{opt} values also indicates that the *O. niloticus* fishery in Lake Koka is healthy. We also evaluated the possible changes of E for all the species using the values of L_∞ and K within their 95 % CI and found slight change in the mortality parameters and E values, which, however, do not affect the overall conclusion on exploitation status for all the three species.

The fish production potential estimated for Lake Koka using empirical models (1 360 t/year by Tesfaye and Wolff (2014) and 1 500 t/year by LFDP (1994)) is far beyond the current production level of about 625 t, suggesting that there is a room for production expansion.

Our study indeed suggests that fishery production may be increased by increasing the exploitation rate on the underexploited *C. carpio* and possibly by increasing the size at first capture of all the three species. This would reduce the numbers caught below L_m and would increase the numbers of fish caught in the L_{opt} range. Froese, Stern-Pirlot, Winker and Gascuel (2008) demonstrated that fishing within the L_{opt} range maximizes yield and spawning biomass and would be a step towards a sustainable ecosystem-based fisheries management. It might also be possible to increase production by expanding the fishing grounds of *C. carpio* and *C. gariepinus* towards the deeper parts of the lake after careful assessment

of the economic and ecological feasibility of offshore and demersal fishing grounds, which seem presently to serve as a natural reserve to replenish the stocks.

ACKNOWLEDGMENTS

The study was financed by the German Academic Exchange Service (DAAD) and the National Fisheries and Aquatic Life Research Center (NFALRC) of the Ethiopian Institute of Agricultural Research (EIAR). We are grateful to Ato Tadesse Zeru for his help and commitment to collect data at landing sites. NFALRC research staffs particularly Genanaw Tesfaye and Getnet Workye are greatly acknowledged for their assistance in raw data feeding to the spread sheet. Special thanks also go to Marc H. Taylor for his help during data analysis.

RESUMEN

Evaluación de las reservas pesqueras de especies objetivo en el lago Koka, Etiopía. Un manejo pesquero eficiente es fundamental para que las pesquerías artesanales puedan continuar proveyendo alimento y sustento para los hogares, particularmente en los países en vía de desarrollo, en donde otras opciones a menudo son limitadas. Estudios sobre la dinámica poblacional de las especies objetivo de las pesquerías son, por lo tanto, imperativos para mantener las pesquerías y los beneficios para las sociedades. Esto también es válido para los recursos del Lago Koka (Etiopía) en donde hasta ahora se sabe muy poco sobre los parámetros poblacionales vitales y el estatus de las especies objetivo como la tilapia *Oreochromis niloticus*, la carpa *Cyprinus carpio* y el bagre *Clarias gariepinus*. El estudio aquí presentado tiene como objetivo determinar estos parámetros y evaluar el estado de la pesquería de estas especies en el lago Koka, utilizando los datos de frecuencia de tallas obtenidas de capturas trimestrales en el periodo 2007-2012. Un total de 20 097 especímenes fueron medidos (7 933 de tilapia, 6 025 de bagre y 6 139 de carpa). Los parámetros de crecimiento de von Bertalanffy fueron derivados del análisis de progresión de las modas usando ELEFAN I y aplicando la técnica de jackknife. Las tasas de mortalidad fueron estimadas de curvas de capturas basadas en longitudes y usando modelos empíricos. La tasa de explotación (E), se estimó con los parámetros de mortalidad y también considerando indicadores del tamaño a través de la distribución de tallas en las capturas y su relación con la talla de la primera madurez (L_m), el tamaño que provee la biomasa máxima del cohorte (L_{opt}) y la abundancia de los “mega-desovantes”. Los valores calculados para los



parámetros de crecimiento L_{∞} , K y el índice de la capacidad de crecimiento σ' fueron: 44.5 cm, 0.41 año⁻¹ y 2.90 para *O. niloticus*, 74.1 cm, 0.28 año⁻¹ y 3.19 para *C. carpio* y 121.9 cm, 0.16 año⁻¹ y 3.36 para *C. gariepinus*, respectivamente. La tasa de mortalidad total (Z) fue estimada en 1.47, 0.83 y 0.72 año⁻¹ para *O. niloticus*, *C. carpio* and *C. gariepinus*, respectivamente. Nuestros resultados sugieren que la población de *O. niloticus* se encuentra en un estado saludable, mientras *C. gariepinus* ya muestra signos de sobrepesca por crecimiento. En el caso de *C. carpio* las tasas de explotación tan bajas ($E < 0.5$) que se encontraron, pueden apuntar a una sub-explotación, mientras que los indicadores de tallas sugieren que las pequeñas tallas obtenidas, pueden conducir a una sobrepesca por crecimiento. Concluimos que la producción pesquera en el lago Koka puede ser mejorada si se incrementa E al nivel E_{opt} para *C. carpio* y aumenta el tamaño de la primera captura (L_c) al rango de L_{opt} para todas las especies objetivo.

Palabras clave: crecimiento, mortalidad, tasa de explotación, longitud óptima (L_{opt}), mega-desventajas, indicadores de tamaño.

REFERENCES

- Abdi, H., & Williams, L. J. (2010). Jackknife. In N. Salkind (Eds.), *Encyclopedia of Research Design* (pp. 1-10). Thousand Oaks, CA, USA: Sage.
- Admassu, D. (1996). The breeding season of tilapia, *Oreochromis niloticus* L. in Lake Awassa (Ethiopian rift valley). *Hydrobiologia*, 337(1-3), 77-83.
- Ahmed, K. K. U., Amin, S. M. N., Haldar, G. C., & Dewan, S. (2003). Population dynamics and stock assessment of *Oreochromis niloticus* (Linnaeus) in the Kaptai Reservoir, Bangladesh. *Indian Journal of Fisheries*, 50(1), 47-52.
- Allen, M. S., & Hightower, J. E. (2010). Fish Population dynamics: mortality, growth and recruitment. In W. A. Hurbert & M. C. Quist (Eds.), *Inland fisheries management in North America* (pp. 43-79). Bethesda, Maryland: American fisheries Society.
- Arellano-Torres, A., Hernández Montaña, D., & Meléndez Galicia, C. (2013). A comparative analysis of three length based methods for estimating growth of the tilapia *Oreochromis aureus* (Perciformes: Cichlidae) in a tropical lake of Mexico. *Revista de Biología Tropical*, 61(3), 1301-1312.
- Ayenew, T. (2004). Environmental implications of changes in the levels of lakes in the Ethiopian Rift since 1970. *Regional Environmental Change*, 4(4), 192-204.
- Beverton, R. J. H. (1992). Patterns of reproductive strategy parameters in some marine teleost fishes. *Journal of Fish Biology*, 41, 137-160.
- Clay, D. (1984). Production of the African Catfish (clarias Gariepinus) I. Growth, Mortality and Yield South of the Zambezi. *Journal of the Limnological Society of Southern Africa*, 10(1), 16-24.
- Dadebo, E. (2000). Reproductive biology and feeding habits of the catfish *Clarias gariepinus* (Burchell) (Pisces: Clariidae) in lake Awassa, Ethiopia. *SINET: Ethiopian Journal of Science*, 23(2), 231-246.
- Dadebo, E., Aemro, D., & Tekle-Giorgis, Y. (2014). Food and feeding habits of the African catfish *Clarias gariepinus* (Burchell, 1822) (Pisces: Clariidae) in Lake Koka, Ethiopia. *African Journal of Ecology*, 52(4), 471-478.
- Degefu, F., Teshome, K., Tesfaye, G., Tefera, F., & Lakew, A. (2011). Some limnological aspects of Koka reservoir, a shallow tropical artificial lake, Ethiopia. *Recent Trends in Bioscience*, 1(1), 94-100.
- De Graaf, G., & Janssen, H. (1996). Artificial reproduction and pond rearing of the African catfish *Clarias gariepinus* in sub-Saharan Africa-A hand book. *FAO Fisheries Technical Paper*, 362, 73.
- Dorenbosch, M., Grol, M. G. G., Nagelkerken, I., & Velde, G. van der. (2006). Different Surrounding Landscapes may Result in Different Fish Assemblages in East African Seagrass Beds. *Hydrobiologia*, 563(1), 45-60.
- du-Feu, T. A., & Abiodun, J. (1999). *Predictions of fish yields and the status of the Kainji Lake fishery*, 1998 (Vol. 16). New Bussa, Nigeria: Nigerian-German (GIZ) Kainji Lake Fisheries Promotion Project.
- Flores, L. A. (2011). Growth estimation of mangrove cockle *Anadara tuberculosa* (Mollusca: Bivalvia): application and evaluation of length-based methods. *Revista De Biología Tropical*, 59(1), 159-170.
- Froese, R. (2004). Keep it simple: three indicators to deal with overfishing. *Fish and Fisheries*, 5(1), 86-91.
- Froese, R., Stern-Pirlot, A., Winker, H., & Gascuel, D. (2008). Size matters: How single-species management can contribute to ecosystem-based fisheries management. *Fisheries Research*, 92(2-3), 231-241.
- Fuhang, Y. (1988). Study on life-history pattern of seven freshwater fishes in the Dongjiang River, Guangdong. *Acta Hydrobiologica Sinica*, 12(2), 107-115.
- Gamachu, D. (1977). *Aspects of climate and water budget in Ethiopia*. Addis Ababa: Addis Ababa University press.
- Gayanilo, F. C. J., Sparre, P., & Pauly, D. (2005). FAO-ICLARM stock assessment tools II (FISAT II) Revised version-User's Guide. *FAO Computerized Information Series-Fisheries*, 8, 168.
- Goudswaard, K., & Witte, F. (1997). The catfish fauna of Lake Victoria after the Nile perch upsurge. *Environmental Biology of Fishes*, 49(1), 21-43.

- Gulland, J. A. (1971). *The Fish Resources of the Ocean* (Vol. 97). West Byfleet, Surrey, England: Fishing News (Books) Ltd.
- Hicks, C. C., & McClanahan, T. R. (2012). Assessing Gear Modifications Needed to Optimize Yields in a Heavily Exploited, Multi-Species, Seagrass and Coral Reef Fishery. *PLoS ONE*, 7(5), e36022.
- Ibrahim, N., & Naggar, G. E. (2010). Water Quality, Fish Production and Economics of Nile Tilapia, *Oreochromis niloticus*, and African Catfish, *Clarias gariepinus*, Monoculture and Polycultures. *Journal of the World Aquaculture Society*, 41(4), 574-582.
- Jackson, Z. J., Quist, M. C., & Larscheid, J. G. (2008). Growth standards for nine North American fish species. *Fisheries Management and Ecology*, 15(2), 107-118.
- Kebede, E., Zinabu, G. M., & Ahlgren, I. (1994). The Ethiopian Rift Valley lakes: chemical characteristics of a salinity-alkalinity series. *Hydrobiologia*, 288(1), 1-12.
- Kimirei, I. A., Nagelkerken, I., Griffioen, B., Wagner, C., & Mgaya, Y. D. (2011). Ontogenetic habitat use by mangrove/seagrass-associated coral reef fishes shows flexibility in time and space. *Estuarine, Coastal and Shelf Science*, 92(1), 47-58.
- King, M. (1995). *Fisheries biology, assessment and management*. Osney Mead, England: Fishing News Books.
- Kudhongania, A. W., & Cordone, A. J. (1974). Bathospacial distribution patterns and biomass estimate of the major demersal fishes in Lake Victoria. *African Journal of Tropical Hydrobiology and Fisheries*, 3(1), 15-31.
- Leonce-Valencia, C., & Defeo, O. (1997). Evaluation of three length-based methods for estimating growth in tropical fishes: the red snapper *Lutjanus campechanus* of the Campeche Bank (Mexico). *Scientia Marina*, 61(3), 297-303.
- Levi, D., Andreoli, M. G., & Cannizzaro, L. (1987). Use of ELEFAN I for sampling design. In D. Pauly, & G. R. Morgan (Eds.), *Length-based methods in fisheries research* (pp. 311-319). Manila, Philippines: ICLARM.
- LFDP (1994). Preliminary estimation of the maximum sustainable yields of the lakes covered by the Lake Fisheries Development Project. In D. Reyntjens (Eds.), *Lake Fisheries Development Project, Phase II* (pp. 1-18). Addis Ababa, Ethiopia: Ministry of Agriculture.
- LFDP (1997). Lake fisheries management plans. In D. Reyntjens (Eds.), *Lake Fisheries Development Project, Phase II* (pp. 1-65). Addis Ababa, Ethiopia: Ministry of Agriculture.
- Lowe-McConnell, R. H. (1982). Tilapias in fish communities. In R. S. V. Pullin, & R. H. Lowe-McConnell (Eds.), *The Biology and Culture of Tilapias* (pp. 83-113). Manila, Philippines: ICLARM.
- Mesfin, M., Tudorancea, C., & Baxter, R. M. (1988). Some limnological observations on two Ethiopian hydroelectric reservoirs: Koka (Shewa administrative district) and Finchaa (Welega administrative district). *Hydrobiologia*, 157(1), 47-55.
- Moreau, J., Bambino, C., & Pauly, D. (1986). A comparison of four indices of overall fish growth performance, based on 100 tilapia (Cichlidae) populations. In J. J. Maclean, L. B. Dizon, & L. V. Hosillos (Eds.), *First Asian Fisheries Forum* (pp. 201-206). Manila, Philippines: Asian Fisheries Society.
- Moreau, J., Palomares, M. L. D., Torres, F. S. B., & Pauly, D. (1995). Atlas démographique des populations de poissons d'eau douce d'Afrique. *ICLARM Technical Report*, 45, 140.
- Munro, J. L., & Pauly, D. (1983). A simple method for comparing the growth of fishes and invertebrates. *Fishbyte*, 1(1), 5-6.
- Pauly, D. (1979). *Gill size and temperature as governing factors in fish growth: a generalization of von Bertalanffy's growth formula*. Kiel, Germany: Christian Albrechts Universität Kiel.
- Pauly, D. (1980). On the interrelationships between natural mortality, growth parameters, and mean environmental temperature in 175 fish stocks. *ICES Journal of Marine Science*, 39(2), 175-192.
- Pauly, D. (1984). Fish population dynamics in tropical waters: a manual for use with programmable calculators. *ICLARM Studies and Reviews*, 8, 325.
- Pauly, D., Christensen, V., Dalsgaard, J., Froese, R., & Torres, F. (1998). Fishing Down Marine Food Webs. *Science*, 279(5352), 860-863.
- Pauly, D., & Munro, J. L. (1984). Once more on the comparison of growth in fish and invertebrates. *Fishbyte*, 2(1), 21.
- Quenouille, M. H. (1956). Notes on bias in estimation. *Biometrika*, 43, 353-360.
- Ricker, W. E. (1975). Computation and interpretation of biological statistics of fish population. *Bulletin of the Fisheries Research Board of Canada*, 191, 401.
- Rikhter, V. A., & Efanov, V. N. (1976). On one of the approaches to estimation of natural mortality of fish populations. *International Commission for the Northwest Atlantic Fisheries*. CNAF Res. Doc. 76/V1/8, 12.
- Solomon, J. R., & Boro, S. G. (2010). Survival rate in polyculture of catfish *Heteroclarus /tilapia (Oreochromis niloticus)*, Fed 2% Body Weight. *New York Science Journal*, 3(9), 68-78.

- Sparre, P., & Venema, S. C. (1998). Introduction to Tropical Fish Stock Assessment-Part 1: Manual. *FAO Fisheries Technical Paper*, 306(1), 407.
- Tadesse, Z. (1997). Breeding season, fecundity, length-weight relationship and condition factor of *Oreochromis niloticus* L. (Pisces: Cichlidae) in Lake Tana, Ethiopia. *SINET: Ethiopian Journal of Science*, 20(1), 31-47.
- Tadesse, Z. (1999). The nutritional status and digestibility of *Oreochromis niloticus* L. diet in Lake Langeno, Ethiopia. *Hydrobiologia*, 416, 97-106.
- Teferi, Y., Admassu, D., & Mengistou, S. (2004). Breeding season, maturation and fecundity of *Oreochromis niloticus* L. (Pisces: Cichlidae) in Lake Chamo, Ethiopia. *SINET: Ethiopian Journal of Science*, 24(2), 255-264.
- Tempero, G. W., Ling, N., Hicks, B. J., & Osborne, M. W. (2006). Age composition, growth, and reproduction of koi carp (*Cyprinus carpio* L.) in the lower Waikato, New Zealand. *New Zealand Journal of Marine and Freshwater Research*, 40, 571-583.
- Tesfaye, G. (2006). *Population dynamics and stock assessment of Nile tilapia (Oreochromis niloticus L.) in three Rift Valley Lakes (Koka, Ziway and Langano), Ethiopia*. Universität Bremen, ZMT, Bremen, Germany.
- Tesfaye, G., & Tadesse, Z. (2008). Length-weight relationship, Fulton's condition factor and size at first maturity of tilapia, *Oreochromis niloticus* L. in lakes Koka, Ziway and Langano (Ethiopian rift valley). *Ethiopian Journal of Biological Sciences*, 7(2), 139-157.
- Tesfaye, G., & Wolff, M. (2014). The state of inland fisheries in Ethiopia: a synopsis with updated estimates of potential yield. *Ecohydrology & Hydrobiology*, 14(3), 200-219.
- Tudorancea, C., Zinabu, G. M., & Dadebo, E. (1999). Limnology in Ethiopia. In R. G. Wetzel & B. Gopal (Eds.). *Limnology in developing countries* (Vol. 2, pp. 63-118). New Delhi: International Association of Theoretical and Applied limnology.
- Tukey, J. (1958). Bias and confidence in not quite large samples. *Annals of Mathematical Statistics*, 29, 614.
- Tukey, J. (1986). The future of processes of data analysis. In L. V. Jones (Eds.), *The Collected Works of John W. Tukey- philosophy and principles of data analysis: 1965-1986* (Vol. 4, pp. 517-549). Monterey, CA, USA: Wadsworth & Brooks/Cole.
- Vanden Bossche, J. P., & Bernacsek, G. M. (1991). Source book for the inland fishery resources of Africa. *FAO CIFA Technical Paper*, 18(3), 219.
- Winker, H., Weyl, O. L. F., Booth, A. J., & Ellender, B. R. (2011). Life history and population dynamics of invasive common carp, *Cyprinus carpio*, within a large turbid African impoundment. *Marine and Freshwater Research*, 62(11), 1270.
- Witte, F., & de Winter, W. (1995). Appendix II: Biology of the major fish species of Lake Victoria. In F. Witte, & W. L. T. Van Densen (Eds.), *Fish stocks and fisheries of Lake Victoria-A handbook for field observations* (pp. 301-320). Dyfed, Great Britain: Samara Publishing Limited.
- Workagegn, K. B., & Gjoen, H. M. (2012). Comparative Studies on the Growth Performance of Four Juvenile *Oreochromis niloticus* L., (1758) Strains in Pond Culture, Ethiopia. *International Journal of Aquaculture*, 2(7), 40-47.
- Wudneh, T. (1998). *Biology and Management of Fish Stocks in Bahir Dar Gulf, Lake Tana, Ethiopia*. The Netherlands: Landbouwniversiteit Wageningen.
- Zinabu, G. M., Kebede, E., & Desta, Z. (2002). Long-term changes in chemical features of waters of seven Ethiopian rift-valley lakes. *Hydrobiologia*, 477(1-3), 81-91.